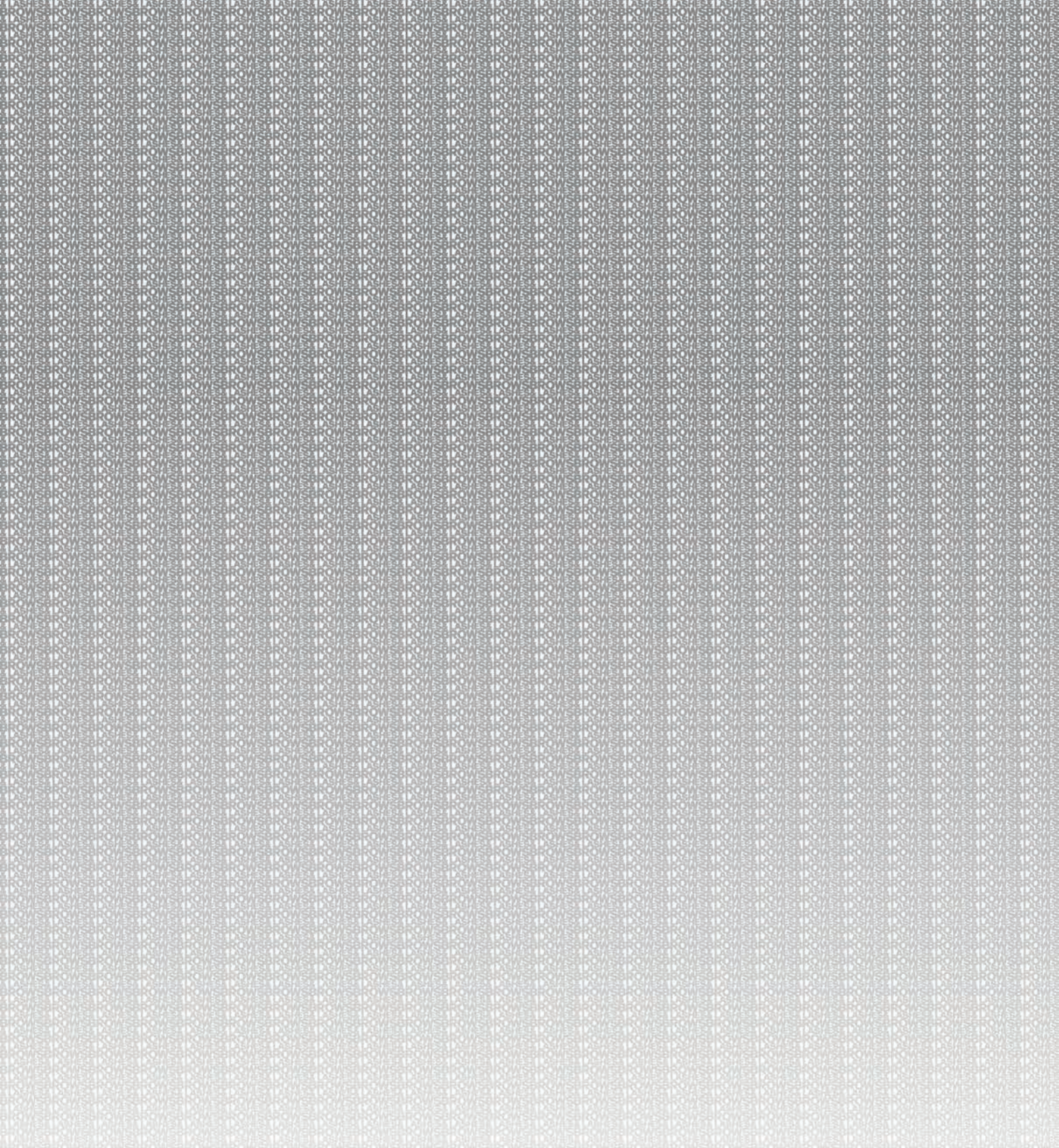


BROWS & LASHES



1, 2, 3, ... We have LashLift! Introducing the ultimate boost for natural lashes, the HIVE® LashLift system. **Only for use by trained technicians.**

Take the beauty & volume of lashes into another stratosphere & create the effect of longer, lifted lashes. The LashLift system comprises of 3 liquid treatments: Lifting Crème (1), Treatment Lotion (2) & Conditioning Serum (3). When combined with HIVE® Lash Lifting Shields (A) & Bonding Serum (B), it creates everything required for a first class professional lash lift treatment.

An easy-to-follow 3 step journey to eyelashes that are out of this world! **1 - Lift, 2 - Treat, 3 - Condition**

Step 1: HIVE® Lash Lifting Crème

Applied to the base of the lashes, this highly effective crème, enhanced with Hydrolyzed Silk & Vitamin B3, weakens the disulfide bonds in each hair, allowing them to be re-shaped & lifted around the contour of the shield. This creates maximum lift.

10 x 1.5ml sachets
14971

Step 2: HIVE® Lash Treatment Lotion

Maintain, fix & hold the perfectly positioned & re-shaped lashes with the Lash Treatment Lotion (2). The smooth, silky lotion is applied to the same area as the Lash Lifting Crème (1), restoring the disulfide bonds in the expertly-crafted new shape.

10 x 1.5ml sachets
14972

Step 3: HIVE® Lash Conditioning Serum

A fast-acting serum that moisturizes & conditions the eyelashes to maintain the results for up to 6-8 weeks. Aloe Vera promotes smoothness & a healthy shine in the hair. The dual-functioning Conditioning Serum (3) gently, but effectively, removes any tint or bonding serum residue for a fantastic finish.

10 x 1.5ml sachets
14973



Lifting Shields

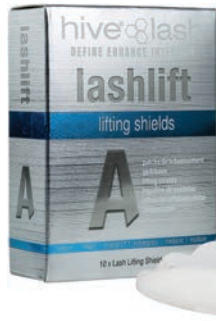
Designed for use with the HIVE® LashLift system & available in 3 sizes, these silicone-based shields provide a unique contour to aid the re-shaping of natural lashes. The width of the Lifting Shields can be trimmed in length, enabling an absolutely perfect fit on the lash lid.

10 pieces

Small
14974

Medium
14975

Large
14976



LashLift Tool

14978



HIVE® LashLift Starter Kit

Contains:

- 10 x Lifting Crème, 1.5ml
- 10 x Treatment Lotion, 1.5ml
- 10 x Conditioning Serum, 1.5ml
- 10 x Lifting Shields - Small
- 10 x Lifting Shields - Medium
- 10 x Lifting Shields - Large
- 1 x Bonding Serum, 5ml
- 10 x glue rings

14979



BROW WAXING KITS

HIVE® Brow Waxing Kit

Provides salon & brow bar owners the perfect opportunity to increase their customer offering. This compact & complete all-in-one business solution is essential for every brow station or treatment room. Made in the UK.

Includes:

- 1 x Petite Compact 200cc Wax Heater
- 2 x 50g Sensitive Hot Film Wax Discs
- 1 x Pre Wax Cleansing Lotion, 200ml
- 1 x After Wax Treatment Lotion, 200ml
- 50 x mini disposable wooden spatulas
- 1 x pair of angled tweezers

12507



Original Eyelash & Eyebrow Tint

Created for the salon professional, Apraise Eyelash & Eyebrow Tinting System fuses color pigment technology & beeswax with a rich cream base to penetrate deep into the hair shaft to provide radiant color from root to tip. Water-resistant, smudge-proof & lasts up to eight weeks. 20ml



Grey
10561



Blue Black
10562

Tint Developer
Enhances the color of eyelash tint being used.
50ml
10555



Protective Eye Sheets
Premium protective sheets for use during the tinting procedure, to prevent skin from staining.
96 Sheets
10558



Stain Remover
Removes any stains or splashes that may occur when performing the tinting procedure.
100ml
10556



Cream Developer
Stabilized cream-based developer. Sufficient for approximately 300 applications.
100ml
10559



Eyebrow Shaping Wax
Includes shaping wand.
50ml
12340



Vegan & PPD Free Eyelash & Eyebrow Tint

Created for the salon professional, the new & improved Apraise lash & brow tint is 100% vegan & PPD free. Offers higher shine, better coverage & stronger staining power. The water-resistant, smudge-proof formula lasts up to 8 weeks & visibly transforms the appearance of lashes & brows, achieving the perfect shade every time. 20ml



Black #1
19079

Graphite #1.1
19365

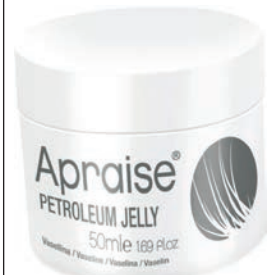
Dark Brown #3
19080

Light Brown #3.1
19081

Chestnut #4
19071



Petroleum Jelly
Essential stain protection of the skin around the eyelash or eyebrow when tinting.
50ml
10557



Starter Kit

Contains:
- Eyelash tint: 1 x black, 1 x blue black, 1 x dark brown
- Eyelash tint protective sheets, tint developer, dappen dish & tint brush
10565



Salon Starter Kit, 5 Colors

Contains:
- Eyelash tint: 1 x black, 1 x blue black, 1 x dark brown, 1 x light brown, 1 x graphite
- 1 x stain remover
- 1 x petroleum jelly
- Eyelash tint protective sheets
- 1 x tint developer
- 1 x dappen dish
- 1 x tint brush
10566



Dual-Ended Angled Tinting Brush

Ideal for applying tint, filling in arches, creating lines & contouring brows. With vegan fibers.
19370



Dappen Multi-Purpose Glass Mixing Dish

Great for holding eyelash adhesives, removers, liquids & small items that are easy to get lost.
19369



Brow Sculpt

Get thicker, fuller looking, defined brows with this clear gel formula that is ultra-strong, flake free & non-sticky. A speedy alternative to an actual brow lamination treatment.

The precise applicator allows you to tame & create the perfect brows that will stay in place & last all day. Contains Aloe Vera & Jojoba Seed Oil for soothing, moisturising & nourishing benefits. 10ml **18788**



Mapping Paste

To map the desired brow shape. Creates clean, crisp & defined brows. A smudge-proof, smooth textured paste that contains Sweet Almond Oil that spreads well over the skin. Creates a barrier for a flawless application. A must have essential for any brow tinting treatment. 20ml **18789**



Nourishing Brow Oil

A luxurious treatment that will help hydrate, nourish & provide optimum brow condition & promote healthier brows.

Formulated with Sweet Almond & Rosemary Leaf Oil, which act as natural moisturizers, to help ensure long-lasting results. Reduces split ends & controls hair breakage. An aftercare essential for post tint & lamination treatments. 30ml **18790**



Brow Scrub

The perfect prep & aftercare treatment to exfoliate brows. A naturally derived exfoliator that gently exfoliates the skin & eyebrows, removing dead skin cells & impurities to ensure a smooth canvas to apply tint. An essential to use before any brow lamination maintenance treatment. 50ml **18791**



Foam Cleanser

The perfect prep & aftercare treatment to cleanse lashes & brows. Effectively cleanses the lash & brow area of oil, dirt & make-up, leaving the skin prepped for any lash & brow treatment.

An essential to use during any brow lamination maintenance treatment. Can be used daily to clean eyelash extensions. 100ml **18792**



Miracle Growth Serum

Transforms lashes & brows in just 30 days. Stimulates keratin production, improving lash fullness & growth.

Infused with Vitamin E & Jojoba Oil. Ideal for short, brittle, thin lashes & sparse brows to support their natural growth cycle. Missing nourishment & strength are restored.

After 30 days, brows & lashes are visibly healthier, longer & fuller. A gentle, vegan, cruelty-free formula usable on all skin types. 10ml **19185**



Lash & Brow Maintenance Kit

Includes:
 - 6 x Foam Cleanser, 100ml
 - 6 x Brow Sculpt, 10ml
 - 6 x Brow Scrub, 50ml
 - 6 x Growth Serum, 10ml
 - 6 x Nourishing Brow Oil, 30ml
 - 25 x postcards **18855**



Power Serum For Lash & Brow Growth With Optilex Growth Technology™

Fuller, longer lashes & brows in just 15 days. Growth-stimulating technology encourages the hair follicle to speed up growth.

Improves the appearance of brittle, short, thin lashes & sparse brows. Improves hair anchorage, reducing daily lash loss. 10ml **14489**



Pre Wax & Tint Cleansing Lotion

Get the most from your brow treatment! Remove oil, dirt & make-up, leaving skin around the eye & brow area prepped for a lash, brow & wax treatment. 100ml **14490**



Micellar Eye Make-Up Remover

Remove make-up in one swipe. A soothing & gentle oil-free formula which thoroughly cleanses the eye area, leaving no residue.

Mild surfactant technology works to only remove dirt, debris & buildup. 500ml **16675**



Cooling Aloe Vera Gel

Calms & soothes all skin types, leaving skin soft & moisturized. Perfect for after facial treatments when skin is sensitive or irritated, such as after tinting, facials, peels, waxing & lasers.

Ideal for puffiness, redness & irritations. Free of parabens & mineral oil. 500ml **16676**



Eye Cream

Hydrating & brightening! Refresh the skin around the eyes with this hydrating cream. Contains White Flower Extracts & Caffeine. 30ml **19367**



Eye Serum

Lift & soothe the upper eyelid! Formulated with Botanical Extracts, this eye serum helps reduce the appearance of fine lines & wrinkles. 30ml **19368**



LASH & BROW TINT

Salon Specifics Sensitive Lash & Brow Tint
The perfect lash & brow tint solution for sensitive & allergy-prone skin. Dermatologically approved, hypo-allergenic formula that delivers rich color to brows, but is gentle enough to be tolerated by the skin. The skin is much less likely to look & feel irritated, helping the newly applied color look as natural as possible.

15ml
Dark Brown **18812**
Light Brown **18813**



Salon Specifics Julienne Eyelash Tint
A superior, water-resistant dye to beautifully enhance natural brows & lashes. Lasts up to 6 weeks, offering a cost-effective & fuss-free solution for ladies on the go. Specially formulated for eyelashes/brows. Suitable for contact lens wearers, clients going on holiday, sportswomen, & those with sensitive eyes.

15ml
Black **2811**
Dark Brown **2817**
Light Brown **12503**



BeautyPRO Fibre & Gel Mascara Set
Build your own lashes with mascara & fiber to have amazingly-long lashes, instantly & easily. Set includes two wands, mascara & fiber, for complete lash care & maintenance.
12505



RefectoCil Tint
Imparts rich, deep color to eyebrows or eyelashes for a sophisticated look. Also works well for facial hair including beards & moustaches.

15ml
Black **2932**
Brown **2933**
Blue/Black **3724**
Graphite **18536**



BeautyPRO

RefectoCil

BeautyPRO Cream Peroxide
Cream peroxide for eyelash tint. Nozzle end for precise application. Prepares brows & lashes for tint by lifting the hair so color adheres.

10 Vol
50ml
7374



BeautyPRO

Perfectly Natural Strip Lashes - Create the appearance of longer, thicker lashes for a more natural look.



#53
11025



#62
11027



#45
11028



#110
11030



#102
11031



#202
11032

Perfectly Glamorous Strip Lashes - Add a hint of drama for the perfect go-to glamour look.



#28
11036



#13
11038



#101
11040



#81
11041



#117
11042

Perfect Strip Eyelash Adhesive, Clear
7ml
11053



Perfectly Diva - Embellished with jewels & glitter to sparkle for any special occasion.



#Romantic
11047



#Flirty
11048



#Sophisticated
11049

Starter Kits - Natural Strip Lashes
Ideal for first-time users, includes lashes, applicator & adhesive.

#53
11033



Starter Kits - Glamorous Strip Lashes
Ideal for first-time users, includes lashes, applicator & adhesive.

#33
11043



#105
11044



Pro Lash Applicator
11056



SALON PERFECT

Lash DNA

Discover the best lashes for each individual eye shape. Designed to work with unique eye shapes to provide the most flattering lash fit. Three styles made to hug & highlight the eyes for a custom fit. Accentuate each eye shape for downturned & prominent eye shapes. **Each pack contains one pair of lashes.**



680 - Downturned & Prominent Eyes
16409

681 - Almond & Hooded Eyes
16410

682 - Monolid & Deep Set Eyes
16422

Pre-Permed Push Up Lashes

Just like a lash perm without the need for a lash lift. Provides a natural-looking curl without the need for tools, curlers or chemicals. Choose from loose to tight curl styles for a lift to suit any client. Lashes look natural thanks to the comfortable flex-fit band. **Each pack contains two pair of lashes.**



670 - Loose Curl - Relaxed Lift
16423

671 - Medium Curl - Natural Lift
16424

672 - Tight Curl - Dramatic Lift
16425

Perfect Brow Pomade

Creamy, long-wearing brow color that defines, sculpts & fills in eyebrows for that coveted full look. It is a multi-tasking superstar that combines the work of a pencil, powder & wax in one easy-to-use product. 3.2g



Light Brown
11450



Blonde
11596

Perfect Brow Powder & Stencil Combo

Lightweight, medium coverage brow powder & stencil kit used for defining, shaping & filling in eyebrows.

Two shades & 4 stencils to give you a petite, soft & full or natural eyebrow arch.
11598



Perfect Brow Defining Kit

Travel-friendly brow kit that includes all the essentials to perfectly sculpt & define brows on-the-go, with a convenient mirrored brow palette, complete with three brow powders & a brow bone highlighter.

Smudge-free & blends freely with the dual-end brush & wax grooming pencil with built-in sharpener.
11599



DIANE EYELASHES

Created using the finest synthetic materials with hand-feathered tips to look just like real lashes. Vegan & cruelty-free using no animal or human hair. 50-80% lighter than lashes currently on the market. High end quality without the high end price. Thin, flexible band fits most eye shapes.



Bold #1
11480



Bold #2
11481

diane

CALA EYELASHES

CALA®



Dual Edge
9973



Blue
9975



Purple
9976

CALA FASHION STRIP LASHES

CALA®

Glitter In Body
7936



Glitter At Base
7937



Pink With Glitter
7938



Pink Feathers
7940



Purple/Black Duo
7941



Silver/Black Duo
7942



Pink Stones
7871



Clear Stones
7864

