

All color ranges have upwards of 65 different shades. It is well known that not all colors in the range are equally popular. That results in wasted costs for the distributor as they have to carry stock of all shades irrespective of how well they sell. There are other expenses like color charts that have to be produced showing all shades, storage & other logistical costs even though only about a quarter of shades account for most of the sales.

In these difficult economic times, salons demand a suitable color solution: well-priced tints without compromising quality! HH&B are pleased to announce that we have met this challenge for the **tint me** range by creating a range that offers only the top 42 shades that sell the best at the most affordable price.

Because the **tint me** range is only made up of the best-selling permanent shades, we have been able to pass on substantial savings. This has allowed us the price this 100ml tint at the most affordable price possible. The newly introduced 180ml tubes gives a further cost saving of up to 30%!

The color is made in Italy by a world-class manufacturer with no compromise in the quality. It will perform to the highest expectations as only the best ingredients (Pure Micro Pigments) & the lowest levels of ammonia possible have been used. tint me is compatible with our CDC range of tints, giving you the flexibility to mix special colors as required. **PLEASE ENQUIRE ABOUT OUR OPENING TINT ME DEALS!**

| INTENSE NATURALS | 100ml | 180ml |
|---|-------|-------|
| 1 Black | 9251 | 14263 |
| 1.10 Intense Natural Blue Black | 16995 | |
| 2 Darkest Brown | 9252 | 14264 |
| 3 Dark Brown | 9253 | 14265 |
| 4 Brown | 9254 | 14266 |
| 5 Light Brown | 9255 | 14268 |
| 6 Dark Blond | 9256 | 14270 |
| 7 Blond | 9257 | 14272 |
| 8 Light Blond | 9258 | |
| 9 Very Light Blond | 9259 | |
| 10 Intense Natural Platinum Blond | 16996 | |
| EXTRA INTENSE NATURALS | | |
| 4.000 Extra Intense Natural Brown | 9260 | 14267 |
| 5.000 Light Extra Intense Natural Brown | 9261 | 14269 |
| 6.000 Dark Extra Intense Natural Blond | 9262 | 14271 |
| 7.000 Extra Intense Natural Blond | 16284 | 16297 |
| 8.000 Extra Intense Natural Light Blond | 16290 | 16303 |
| ASH NATURALS | | |
| 4.01 Ash Natural Brown | 16289 | 16302 |
| 5.01 Light Ash Natural Brown | 16282 | 16295 |
| 6.01 Dark Ash Natural Blond | 16281 | 16294 |
| 7.01 Ash Natural Blond | 16283 | 16296 |
| 8.01 Light Ash Natural Blond | 16286 | 16299 |
| 9.01 Very Light Ash Natural Blond | 9263 | |
| MAT NATURALS | | |
| 7.11 Mat Blond | 16279 | |
| 8.11 Light Mat Blond | 16278 | |
| 9.11 Very Light Mat Blond | 16277 | |
| SAVANNAH NATURALS | | |
| 5 NS Light Savannah Brown | 9264 | |
| 6 NS Dark Savannah Blond | 9265 | |
| COPPER | | |
| 6.4 Dark Copper Blond | 16292 | 16305 |
| 7.44 Intense Copper Blond | 16276 | |
| CHOCOLATE | | |
| 4.35 Chocolate Brown | 9266 | |
| 5.35 Light Chocolate Brown | 9267 | |
| MOKA | | |
| 4.88 Moka Brown | 9271 | |
| 5.88 Light Moka Brown | 9272 | |
| MAHOGANY | | |
| 4.5 Mahogany Brown | 16999 | |

| REDS | 100ml | 180ml |
|-------------------------------------|-------|-------|
| 4.62 Red Violet Brown | 16291 | 16304 |
| 5.56 Light Red Mahogany Brown | 9268 | 14754 |
| 5.6 Light Red Brown | 9269 | |
| 5.666 Extra Intense Red Light Brown | 17000 | |
| 6.66 Dark Intense Red Blond | 9270 | |
| 6.666 Extra Intense Red Blond | 17001 | |
| VIOLET | | |
| 2.2 Darkest Violet Brown | 16997 | |
| 4.2 Violet Brown | 16287 | 16300 |
| 5.22 Light Intense Violet Brown | 16285 | 16298 |
| 5.222 Brown Violet Extra Intensive | 16998 | |
| SUPERLIGHTENERS | | |
| 10.1 Super Light Ash Blond | 9273 | |
| 10.111 Platinum Metallic Blond | 17004 | |
| 10.21 Platinum Irisé Ash Blond | 17003 | |
| 12.11 Extreme Ash Blond | 9274 | 14788 |
| GREY | | |
| Light Grey | 9275 | 14262 |
| Dark Grey | 16280 | 16293 |
| TONERS | | |
| Silver | 16288 | 16301 |
| Lilac | 17005 | |
| SPECIALS | | |
| 9.21 Very Light Ice Blond | 17002 | |



tint me Tuft Swatch Chart
Includes:
- tint me 100ml
- tint me XL 180ml
- tint me toners 100ml
- tint me PRONTO 10 100ml
19276



We often hear clients wishing their color services were quicker so they can continue with their day. Clients are not the only people wishing for this - professionals do as well!

A quicker color service means quicker client turnaround & more services per day. More services per day means more revenue for your business. How can we make this a reality? It's simple, & it is now a possibility thanks to tint me. tint me PRONTO 10 is permanent color reimagined for the modern age of hair coloring.

PRONTO 10 is an express 10-minute permanent hair color cream system with no sacrifice in color quality. tint me has grown to become a salon staple for a huge number of professional colorists in South Africa. A major reason is the combination of a low price point & quality. tint me PRONTO 10 continues this trend despite the huge advancements in technology needed to create an express permanent color system.

Salons & professionals can continue to pass on these savings towards their customers & grow their business. PRONTO 10 offers up to 100% grey coverage or grey blending with the range of long-lasting, reliable colors. It offers maximum performance at a reduced time frame.

Just like how tint me XL pioneered more cost saving for the professional, PRONTO 10 continues this trend by including only the most popular shades.

The formula features Shea Butter, & is free from Thioglycolate, MEA, Gluten, SLES/SLS, Parabens & Silicones.



| | |
|---|--------------|
| INTENSE NATURALS | 100ml |
| 1 Black | 19151 |
| 2 Darkest Brown | 19152 |
| 3 Dark Brown | 19153 |
| 4 Brown | 19154 |
| 5 Light Brown | 19159 |
| 6 Dark Blond | 19168 |
| 7 Blond | 19173 |
| 8 Light Blond | 19176 |
| 9 Very Light Blond | 19177 |
| EXTRA INTENSE NATURALS | |
| 4.000 Extra Intense Natural Brown | 19155 |
| 5.000 Light Extra Intense Natural Brown | 19158 |
| 6.000 Dark Extra Intense Natural Blond | 19167 |
| 7.000 Extra Intense Natural Blond | 19172 |
| ASH NATURALS | |
| 5.01 Light Ash Natural Brown | 19160 |
| 6.01 Dark Ash Natural Blond | 19169 |
| 7.01 Ash Natural Blond | 19174 |
| 9.01 Very Light Ash Natural Blond | 19178 |
| COPPER | |
| 7.44 Intense Copper Blond | 19175 |
| CHOCOLATE | |
| 4.35 Chocolate Brown | 19156 |
| 5.35 Light Chocolate Brown | 19162 |
| MOKA | |
| 4.88 Moka Brown | 19157 |
| 5.88 Light Moka Brown | 19165 |
| REDS | |
| 5.56 Light Red Mahogany Brown | 19163 |
| 5.6 Light Red Brown | 19164 |
| 5.666 Extra Intense Red Light Brown | 19166 |
| 6.66 Dark Intense Red Blond | 19170 |
| 6.666 Extra Intense Red Blond | 19171 |

| | |
|------------------------------------|--------------|
| VIOLET | 100ml |
| 5.222 Brown Violet Extra Intensive | 19161 |
| SUPERLIGHTENERS | |
| 10.1 Super Light Ash Blond | 19180 |
| 10.111 Platinum Metallic Blond | 19181 |
| 10.21 Platinum Irisé Ash Blond | 19182 |
| 12.11 Extreme Ash Blond | 19183 |
| GREY | |
| Light Grey | 19184 |
| SPECIALS | |
| 9.21 Very Light Ice Blond | 19179 |





Toners
100ml



Beige
18032



Pink
18033



Rose
18034



Amethyst
18035



Ash
18036



Pearl
18037



Copper
18038



Natural
18039



Clear
18040



Gold
18041



Violet
18042



Blue
18043



Smokey Silver
18044



Toner Tuft Swatch Chart
18251



tint me Professional Cream Peroxide



Classic & proven cream peroxide formula, now available from tint me. Ideally paired with professional tint me permanent colour.
1 Litre



5 Volume (1.5%)
18027



10 Volume (3%)
18028



20 Volume (6%)
18029



30 Volume (9%)
18030



40 Volume (12%)
18031

Professional MULTI-CHROMATIC, TRANSLUCENT color for shinier, brighter, natural & modern hair at half the processing time. Super-sized at 200ml for cost effective savings, to minimize waste & environmental sensitivity. Super-fast processing saving up to half the normal processing time for your time-sensitive clients who demand EXPRESS SERVICES.

BIG

PROFESSIONAL

Beautiful Intelligent Genuine

Advanced, secure, performance focused, professional chemical service formulations & technologies

PROFESSIONAL POINTS OF DIFFERENCE

Not all professional hair color is created equal...

There are thousands of professional hair color brands. Most are very similar.

BIG PROFESSIONAL is the new standard for the following 4 reasons:

1. The Safest Hair Color Formulations

NH3 CONTROL

AMMONIA ENCAPSULATION TECHNOLOGY

Reduces ammonia inhalation & irritation by up to 90%

POLY-FORCE BOND SCIENCE

(BOND-REDUCTION) PROCESS TECHNOLOGY

Lifts & deposits without chemical bond breakage or damage

2. Non-Progressive Hair Color that Processes in Half the Time

Thanks to new technologies we are witnessing grey coverage in as fast as 10 minutes (without chemical accelerators)

CLIENT BENEFITS

Lowest Ammonia, Purist Ingredients, Beautiful Color, Fabulous Hair with Comfort & Safety Benefits for you & for your clients!

12 CLIENT BENEFITS:

When speaking with a client regarding BIG PROFESSIONAL, speak to them about the benefits, not the features. While features & technologies are important, benefits relate the features & technologies to the client.

1. Healthier Color Services

Let's be honest, there are no organic or natural oxidation hair colors or lightening services.

Effective permanent, semi & demi-permanent cosmetic hair colorings are chemical services.

BIG PRO offers safe hair color & lightening alternatives.

2. No More Tears from Ammonia Vapors

Ammonia Performance. YES

Ammonia vapors. NO!

BIG PRO technologies reduce up to 90% ammonia vapor inhalation & irritation

3. Beautiful Color in Half the Time

Chances are your clients took time off from work or family needs to make their appointments.

Thanks to BIG PRO technologies, colorists have the option to produce beautiful hair color in half the time of standard hair colors.

4. Reduced Exposure

Scientists claim that under ideal conditions, the average healthy person's capacity to defend against substantial chemical absorption during oxidation processing is approximately 15 - 20 minutes. BIG PRO's standard processing times are approximately 15- 20 minutes.

5. Improve Elasticity & Shine by Coloring your Hair

BIG PRO's bond building formulas & ABK-C Complex add extra strength & shine to lackluster, listless hair.

6. Personalize Your Color

Color formulas aren't one-size-fits-all!

3. Logical & Ecological

Professional sized products for professional use only

Reduces bulk packaging waste by more than 75%

Color Tube: 200ml

Developers: 3000ml

Powder Bleach: 2500g tub

Bleach Paste: 1000g tub

Direct Colors: 1000ml

Shampoo & Conditioner: 3000ml tubs

4. Practical & Cost-Effective

The professional colorist can create everything to satisfy the clients' needs while cutting inventory by up to 80%

39 Shades, 5 Developers, 2 Bleach Types, 10 Direct Colors, 9

Permanent Toners & 4 Black Bar Treatments

BIG PRO was created to mix & blend for hand-tailored color services, as opposed to one, flat, all-over color from a single tube or box.

7. The More you Color the better your Hair looks & feels

Clients truly feel & see the difference as their hair quality greatly improves over time using BIG PRO.

8. Natural Looking Translucency with Softer Growouts

The natural, multi-chromatic appearance of BIG PRO colors tend to grow out with softer blended lines of demarcation.

9. No More "Just Tinted My Hair" Smell or Waxy Feel

BIG PRO colors easily wash & rinse free from the hair, leaving ZERO chemical or waxy residues. Hair feels & smells clean, fresh & natural.

10. Dermatologically Tested on Humans, Verified Safe & Secure

BIG PRO is Fragrance-Free, Gluten-Free, SLS-Free, Paraben-Free, Silicone-Free, Vegan Friendly. Pure. Clean. Simple & Functional.

11. More Savings, More Compliments

Following your stylist's BIG PRO prescription for color & maintenance, you will actually find you spend less time & money to look better than if you did your hair at home.

12. Anti-Age Color for your Hair

As we age hair tends to get wiry, grey, dry & dull with less elasticity & difficult to color. BIG PRO technologies fight free radicals, & subtly soften, cover, color, brighten & tone for a natural, lustrous, youthful appearance.



NH3 CONTROL

AMMONIA ENCAPSULATION TECHNOLOGY

INTERNATIONAL PATENT

This patented technology electromagnetically attracts, encapsulates and locks the Ammonia molecules and the emerging vapors into the color cream at the moment of activation with the BIG OXY BUTTER Developers.

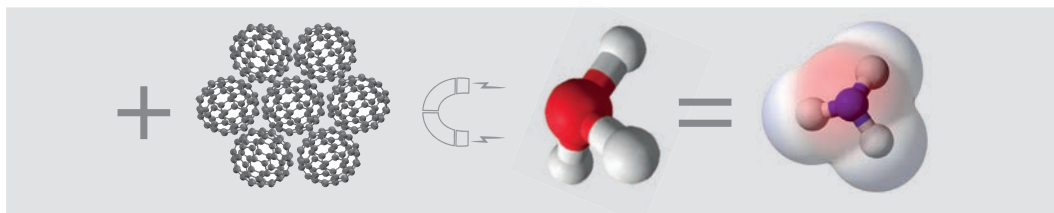
The encapsulated ammonia is then transported directly to the hair shaft where it gently and naturally opens the cuticles while acting as a catalyst enhancing the pigmentation process.

Once the color development is completed the water-soluble ammonia is easily carried away by water leaving no ammonia residues and no unpleasant irritating vapors or odors.

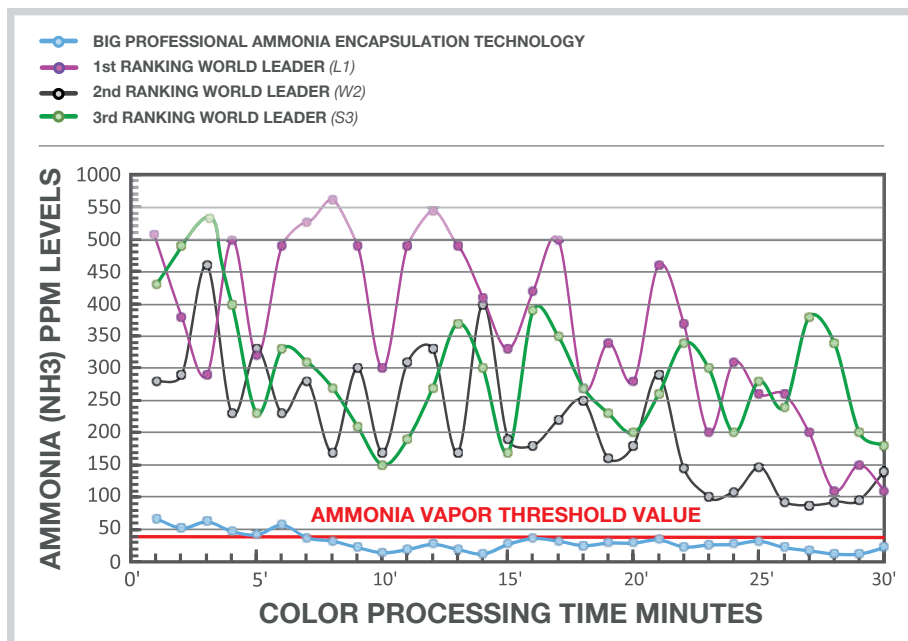
NANO-ABSORBED MOLECULAR MAGNETS

ACTIVATED AMMONIA

NH3 CONTROL AMMONIA ENCAPSULATION



AMMONIA VAPORS RELEASE COMPARISON BETWEEN MAIN COMPETITORS



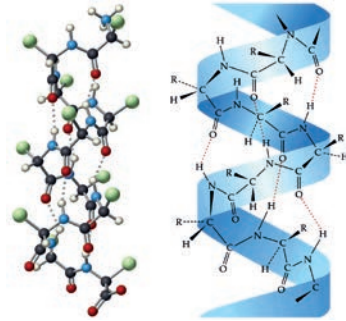
THE RED LINE REPRESENTS THE LEVEL OF HUMAN PERCEPTION TO THE PRESENCE OF AMMONIA VAPORS; below the red line humans are unaware to the presence of ammonia vapors. The GREY AREA represents high levels of toxicity.

BOND REDUCTION: This advanced technology gently reduces the hydrogen bonds, ionic bonds & disulfide bonds within the hair's polypeptide structures, facilitating pigment penetration without breakage or damage to the bonds.

The Big Professional Color cream contains 98.9% pure, ultra-refined color pigments which instantly enter, cluster & fuse with the hair's amino acid keratin protein structures.

This results in superior grey coverage, longevity of color & improved condition of the hair. Deeper penetration of the pigment & superior lift & deposit ensures true-to-color-chart results that last.

BOND-REDUCTION



BIG
PROFESSIONAL

TARGETED HAIR REPAIR enriched with A-BkC Complex. This Amino Btonik Conditioning Complex made of essential oils & botanic extracts:

- Recreates cuticles & seals in color
- Smooths static & frizz
- Repairs damage
- Prevents split ends
- Moisturizes & emulsifies dry hair
- Strengthens fragile hair
- Adds luster, softness & a silky finish
- Improves detangling & manageability
- Keeps hair youthful & elastic
- Gives UV & environmental protection

- BIG PROFESSIONAL is:
- Dermatologically Tested
 - Fragrance-Free
 - Gluten-Free
 - SLS-Free
 - Paraben-Free
 - Vegan Friendly
 - No Animal Testing



The Coloring Book Technical
13774



Color Chart
13773



Tube Squeezer
13917





BIG

PROFESSIONAL

| 40 shades of permanent color (the world's most popular shades): | |
|---|-------|
| NATURALS: Mix 1+1 1/2 | |
| 3.0 BIG PROFESSIONAL DARKEST CHESTNUT 200ML | 13720 |
| 5.0 BIG PROFESSIONAL LIGHT CHESTNUT 200ML | 13723 |
| 7.0 BIG PROFESSIONAL BLONDE 200ML | 13731 |
| 9.0 BIG PROFESSIONAL VERY LIGHT BLONDE 200ML | 13740 |
| ASH NATURALS: Mix 1+1 1/2 | |
| 4.01 BIG PROFESSIONAL NATURAL ASH CHESTNUT 200ML # | 13721 |
| 6.01 BIG PROFESSIONAL NAT DARK ASH CHESTNUT 200ML # | 13727 |
| 8.01 BIG PROFESSIONAL NATURAL LT ASH BLONDE 200ML # | 13738 |
| 10.01 BIG PROFESSIONAL NAT PLATINUM ASH BLONDE 200ML | 13744 |
| # Ideal for Men | |
| ASH: Mix 1+1 1/2 | |
| 1.10 BIG PROFESSIONAL BLUE BLACK 200ML | 13719 |
| 5.11 BIG PROFESSIONAL LT INTENSIVE ASH CHESTNUT 200ML # | 13724 |
| 7.11 BIG PROFESSIONAL INTENSIVE ASH BLONDE 200ML # | 13732 |
| 9.11 BIG PROFESSIONAL VERY LT INTENSIVE ASH BLONDE 200ML # | 13741 |
| # Ideal for Men | |
| GOLDEN: Mix 1+1 1/2 | |
| 7.3 BIG PROFESSIONAL GOLDEN BLONDE 200ML | 13733 |
| 9.3 BIG PROFESSIONAL VERY LT GOLDEN BLONDE 200ML | 13742 |
| BEIGE: Mix 1+1 1/2 | |
| 7.31 BIG PROFESSIONAL BEIGE BLONDE 200ML | 13734 |
| 9.31 BIG PROFESSIONAL VERY LT BEIGE BLONDE 200ML | 13743 |
| TOBACCO: Mix 1+1 1/2 | |
| 6.35 BIG PROFESSIONAL TOBACCO DARK BLONDE 200ML | 13729 |
| 7.35 BIG PROFESSIONAL TOBACCO BLONDE 200ML | 13735 |
| 9.35 BIG PROFESSIONAL LIGHT TOBACCO BLONDE 200ML | 13789 |
| MODA: Mix 1+1 1/2 | |
| 4.45 BIG PROFESSIONAL BRONZE CHESTNUT 200ML | 13722 |
| 5.53 BIG PROFESSIONAL CHOCOLATE LT CHESTNUT 200ML | 13726 |
| 6.20 BIG PROFESSIONAL DARK BLONDE INTENSIVE VIOLET 200ML | 13728 |
| 6.6 BIG PROFESSIONAL DARK RED BLONDE 200ML | 13730 |
| 7.6 BIG PROFESSIONAL RED BLONDE 200ML | 13737 |
| 5.5 BIG PROFESSIONAL LIGHT MAHOGANY CHESTNUT 200ML | 13725 |
| COPPER: Mix 1+1 1/2 | |
| 7.4 BIG PROFESSIONAL COPPER BLONDE 200ML | 13736 |
| 8.44 BIG PROFESSIONAL LT BLONDE INTENSIVE COPPER 200ML | 13739 |
| SUPER LIGHTENERS: Mix 1+2 | |
| 11.0 BIG PROFESSIONAL ULTRA LT NAT BLONDE 200ML | 13745 |
| 11.11 BIG PROFESSIONAL ULTRA LT ASH BLONDE 200ML # | 13746 |
| 11.13 BIG PROFESSIONAL ULTRA LT BEIGE BLONDE 200ML | 13747 |
| 11.2 BIG PROFESSIONAL ULTRA LT IRISE BLONDE 200ML | 13748 |
| # Ideal for Men | |
| INTENSIVE BOOSTERS/COLOR CORRECTORS: | |
| 11A BIG PROFESSIONAL ASH COLOR-CORRECTOR BOOSTER 200ML | 13749 |
| 22V BIG PROFESSIONAL VIOLET COLOR-CORRECTOR BOOSTER 200ML | 13750 |
| 66R BIG PROFESSIONAL RED COLOR-CORRECTOR BOOSTER 200ML | 13751 |
| 88B BIG PROFESSIONAL BLUE COLOR-CORRECTOR BOOSTER 200ML | 13752 |
| 33G BIG PROFESSIONAL GOLD COLOR-CORRECTOR BOOSTER 200ML | 13753 |
| 03Y BIG PROFESSIONAL YELLOW COLOR-CORRECTOR BOOSTER 200ML | 13790 |
| 38G BIG PROFESSIONAL GREEN COLOR-CORRECTOR BOOSTER 200ML | 13791 |
| 00C BIG PROFESSIONAL CLEAR COLOR-CORRECTOR BOOSTER 200ML | 13792 |

BIG OXY BUTTER VELVETY LUSH DEVELOPER

Performs a 5-Phase Fusion Action during the color process:

1. Activates the ammonia & oxidative actives within the color cream.
2. Assists with the encapsulation of the ammonia & developing vapors at the moment of oxidation.
3. Delivers the active ingredients directly to the hair shaft where it reacts in conjunction with the ammonia to lift & diffuse the natural pigments.
4. Assists with the development, delivery & linkage of the newly forming activated color pigments deep into the cortex to the amino protein structures.
5. The pigments are then linked & trapped in the spaces between the hair's peptide bonds for extended color vibrancy.

- 3 Litre
 3 Volume (1%) **13796**
 10 Volume (3%) **13754**
 20 Volume (6%) **13755**
 30 Volume (9%) **13756**
 40 Volume (12%) **13757**



BIG CREAM BLEACH1+1 DE-COLORATION This conditioning cream lightener can easily & gently lift up to 6 levels, & is ideal for on scalp bleaching treatments as well as free-hand highlighting techniques. Built-in conditioning & barrier oils protect while the ultra-lightening factors work on lifting the melanin molecules to the desired levels.

The anti-yellow features work to neutralize warm hues from inside-out, giving it excellent toning capabilities. The creamy emollient formula gives the colorist an unlimited array of lightening technical options & application control.

Recommended for gentle bleaching on medium to fine hair with lower volume % developers. Can be used for multiple applications.

2.5kg
13759



COLOR CARE HOME TREATMENTS

POST-COLOR SHAMPOO

Non stripping, protects & seals in color
 pH 4.5
 480ml
14101



POST-COLOR CONDITIONER

pH 4.0
 480ml
14102



POST-COLOR COLORFIX SPRAY

pH 3.5
 250ml
14103



BIG COLOR DIRECT SEMI-PERMANENT

An alkaline direct color conditioning system featuring ten concentrated shades. Depending on the amount of color & technique used these luscious, joyous shades can produce amazing colors, change or intensify the natural base tone, create avant-garde effects or gentle natural pastels & highlights. When you want to lighten the BIG Color Direct color shades or create a pastel tone, mix the color with the 000.Pastel White toner a small amount at a time in a bowl until the desired shade is achieved. To darken, intensify, deepen or create more matte color tones, gradually add 111.Black to the mixture until the desired richness is achieved.

1 Litre



.000 Pastel
13769



.01 Metal
 New Bond Formula*
13766



.111 Black
13760



.18 Iron
13765



.33 Gold
13764



.44 Copper
13762



.62 Fucsia
13763



.77 Brown
13761

*BEST SELLER

A range of color pigmentation:
BLEACH & COLOR® PERMANENT CREAM & SPECIALONECOLOR® SEMI-PERMANENT MASKS.
Made in Italy

A revolutionary one step, high fashion hair color system
 From the color you have, to the color you want in one step!

Unlike any other product on the market, Bleach&Color® lifts & deposits color pigments on both natural & previously colored hair in one step. Bleach&Color® offers endless creativity, with the ability to lift up to 7 levels, while oxidation-resistant pigments deposit into the hair shaft.

Bleach&Color® permanent cream 80ml, 16 shades:



There are 3 main components that comprise Bleach&Color®

- **Lightening** - upon application, Bleach&Color® Cream first acts as a decolorizer to remove the pigments present in the hair (both natural & synthetic)
- **Depositing** - once the hair has been lightened appropriately, Bleach&Color® Color cream begins depositing the new oxidation-resistant pigments into the hair
- **Combined** - the lightening & depositing actions create an ideal environment for the new color pigments to bond with those remaining in the hair after lightening, while leaving the cuticle intact, ensuring minimal damage to the hair



HOW TO USE:

The mixing ratio is 1 part developer to 1 part BLEACH&COLOR®. (example: 30g of 30 volume developer + 30g Bleach&Color®) For best results, always use a scale to measure, & mix formula thoroughly until smooth. Choose the right developer that suits the amount of lift required, either 20 volume, 30 volume or 40 volume. 40 volume is recommended for previously colored & level 5 or darker hair. Cover the hair with foil, meche or a processing cap, & you may process under heat. Check the hair after 10-15 minutes to ensure the cuticle is not damaged. As long as the hair is not damaged, continue processing under heat, checking every 10 minutes (check green every 5-10 minutes), up to 50 minutes. Remove from heat & allow an additional 15 minutes for the color to deposit. It is extremely important to monitor the color progression.

IMPORTANT: The shades containing primarily blue pigment (blue, aquamarine, & green) are considered advanced shades & must be monitored very closely. If the green is left longer than intended, the blue pigment will become the dominant pigment & the hair will appear more blue than green. Once you have achieved your desired color, rinse the hair & shampoo to remove any color residue. Do not condition if you plan to apply a mask.

Light
Blonde
13193

Ash
Blonde
13194

Silver
13195

Steel
13196

Champagne
13197

Brown
13198

Yellow
13199

Copper
Blonde
13200

Titian
Blonde
13201



Red
13202

Fuchsia
13203

Violet
Magenta
13204

Purple
13205

Aqua
Marine
13206

Green
13207

Blue
13208



SpecialOneColor® Semi-Permanent Masks can be used to enhance an existing shade in the hair or to change the shade in pre-lightened hair. Create unlimited shades by mixing any of the SpecialOneColor® masks together to create any custom shade you desire. The 000 mask is used to dilute more intense masks shades & create pastel colors.

SpecialOneColor® Masks:

Unlike other direct dyes, SpecialOneColor® masks contain a special alkaline agent which allows the pigments to penetrate the hair cuticle & adhere to the hair for longer-lasting results.

SpecialOneColor® masks do not require developer. When formulating, simply choose the desired color masks & apply directly to the hair. Do not add developer to your formulation.

If hair has been previously lightened or decolorized, SpecialOneColor® masks can be used without Bleach&Color®.

HOW TO USE:

Choose your desired mask shade(s). If mixing more than 1 mask together, make sure to mix well to ensure even color distribution. Apply the mask to pre-washed, towel dried hair. Process for 15 - 20 minutes, then thoroughly rinse, shampoo & condition the hair. For optimal results, use on hair that has been previously colored with BLEACH&COLOR®.

Color Stabilizer pH 3.5 Spray 230ml:

pH 3.5 spray is the final step in the system. It prevents the hair color from fading, seals the cuticle & leaves the hair shiny & soft. It is imperative to use the pH 3.5 spray to extend the life of the color, keep the cuticle smooth & the hair shiny.

The pH 3.5 spray is also an excellent product for clients to use at home in order to keep their color vibrant & shiny between appointments.

HOW TO USE:

After shampooing, apply pH 3.5 spray to return the hair to its natural pH & close the cuticle. For best results, spray on clean damp hair & use a wide tooth comb to evenly distribute the product after every shampoo, then proceed with styling.

SpecialOneColor® masks 200ml (except Pastel White 000, 400ml)

Bleach&Color® (16) & SpecialOneColor® (18) Tuft Color Chart 13228

Color Stabilizer pH 3.5 Spray 200ml 13227



000

Pastel White
13209



01

Platinum
13210



11

Intense Grey
13211



02

Lavender
13212



22

Intense Violet
13213



88

Blue
13214



03

Very Light
Golden Blonde
13215



13

Light Beige
13216



34

Golden Copper
13217



04

Copper
13218



44

Intense Copper
13219



05

Mahogany
13220



52

Magenta
13221



56

Ruby Red
13222



62

Fuchsia
13223



66

Intense Red
13224



07

Moka
13225



75

Cocoa
13226



How do you use this system? For example:

1. If your initial base color is a level 4, using any one of the 16 BLEACH&COLOR® permanent shades achieves the target base color shown on the right-hand side. Assuming you used champagne (13197), this is the effect:
2. If you want a more intensive color, choose any of the 18 SpecialOneColor® semi-permanent shades or a combination of different colors to achieve any one of the 10 results shown:
3. Once the Bleach&Color® is fully processed, the resultant base color may be altered and/or enhanced with one or a formulation mixture of SpecialOneColor® Masks as shown below. Other makes of fashion color lines require pre-lightening to a light blonde shade in order for the fashion colors to show up, however, when the colors fade, the base they fade to is usually an uneven, & sometimes "washed out", leaving an undesirable tone. With Bleach&Color® the new base color is permanent, which means the mask shades will always have those base tones to adhere to, & will never fade to those uneven & undesirable tones.



BASE / BLEACH&COLOR®

INITIAL BASE COLOR

TARGET BASE COLOR

LEVEL 4 / LIGHT BLONDE

13193

INITIAL BASE COLOR

TARGET BASE COLOR

LEVEL 4 / ASH BLONDE

13194

INITIAL BASE COLOR

TARGET BASE COLOR

LEVEL 4 / SILVER

13195

INITIAL BASE COLOR

TARGET BASE COLOR

LEVEL 4 / STEEL

13196

INITIAL BASE COLOR

TARGET BASE COLOR

LEVEL 4 / CHAMPAGNE

13197

INITIAL BASE COLOR

TARGET BASE COLOR

LEVEL 4 / BROWN

13198

INITIAL BASE COLOR

TARGET BASE COLOR

LEVEL 4 / YELLOW

13199

SEMI-PERMANENT MASK

SPECIALONECOLOR®



BASE / BLEACH & COLOR®

SEMI-PERMANENT MASK
SPECIAL ONE COLOR®

INITIAL BASE COLOR
TARGET BASE COLOR
LEVEL 4 / COPPER BLONDE
13200



INITIAL BASE COLOR
TARGET BASE COLOR
LEVEL 4 / TITAN BLONDE
13201



INITIAL BASE COLOR
TARGET BASE COLOR
LEVEL 4 / RED
13202



INITIAL BASE COLOR
TARGET BASE COLOR
LEVEL 4 / FUCHSIA
13203



INITIAL BASE COLOR
TARGET BASE COLOR
LEVEL 4 / VIOLET MACENTA
13204



INITIAL BASE COLOR
TARGET BASE COLOR
LEVEL 4 / PURPLE
13205



INITIAL BASE COLOR
TARGET BASE COLOR
LEVEL 10 / AQUA-MARINE
13206



INITIAL BASE COLOR
TARGET BASE COLOR
LEVEL 10 / GREEN
13207



INITIAL BASE COLOR
TARGET BASE COLOR
LEVEL 10 / BLUE
13208

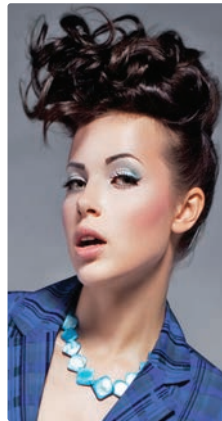


COMPAGNIA DEL COLORE®

Love is in the Hair

Made in Italy
Compagnia Del Colore (CDC) is well known for its quality & extreme variety of high technology colors. You can choose from 130 different colors, making it the widest range in the world & allowing you to really express your creativity & satisfy any of your customer's requirements. CDC coloring cream formula has the lowest possible level of ammonia thanks to the use of **Pure Micro Pigments** which guarantee deep penetration of the color molecule with the minimum disruption to the hair's natural structure.

- Great & consistent color results while respecting the hair: the natural ingredients used guarantee uniformity of color, brightness, shine & long-lasting properties, also making the hair silky & soft.
- 100% grey coverage power.
- Lifting power: 1 to 4 tones with higher lifting from the super lightening shades.
- Cost effectiveness: all colors are packed in 100ml tubes with a mix ratio of 1 part color to 1.5 parts developer, allowing up to 3 applications per tube.
- Easy to use: the particular emollient qualities of the ingredients & the mix ratio make the color easy to apply, spread & rinse out
- Environmentally friendly: the color is low in ammonia & biodegradable.
- The coloring cream combines two precious ingredients: Orange butter & Honey. Orange butter has anti-oxidizing, UV protection, anti-pollution & anti-age properties, while honey is nourishing & hydrating for cuticles & gives elasticity, body & shine to hair.



TIP
100ml CDC tint weighs 96g
100ml peroxide weighs 92g

| INTENSE NATURALS 100ml | |
|---------------------------|------|
| 1 Black | 3277 |
| 1.10 Blue Black | 3296 |
| 2 Darkest Brown | 3278 |
| 3 Dark Brown | 3279 |
| 4 Brown | 3280 |
| 5 Light Brown | 3281 |
| 6 Dark Blond | 3282 |
| 7 Blond | 3283 |
| 8 Light Blond | 3284 |
| 9 Very Light Blond | 3285 |
| 10 Natural Platinum Blond | 3286 |



Opening deals available. Please request details.

| EXTRA INTENSE NATURALS 100ml (for resistant grey coverage) | |
|--|-------|
| 4.000 Extra Intense Natural Brown | 5502 |
| 5.000 Light Extra Intense Natural Brown | 5503 |
| 6.000 Dark Extra Intense Natural Blond | 5504 |
| 7.000 Extra Intense Natural Blond | 5505 |
| 8.000 Extra Intense Natural Light Blond | 5506 |
| ASH NATURALS 100ml | |
| 4.01 Ash Natural Brown | 3297 |
| 5.01 Light Ash Natural Brown | 3298 |
| 6.01 Dark Ash Natural Blond | 3299 |
| 7.01 Ash Natural Blond | 3300 |
| 8.01 Light Ash Natural Blond | 3301 |
| 9.01 Very Light Ash Natural Blond | 3302 |
| MAT NATURALS 100ml | |
| 6.11 Dark Mat Blond | 3492 |
| 7.11 Mat Blond | 3493 |
| 8.11 Light Mat Blond | 3461 |
| 9.11 Very Light Mat Blond | 3462 |
| SAVANNAH NATURALS 100ml | |
| 4 NS Savannah Brown | 3407 |
| 5 NS Light Savannah Brown | 3408 |
| 6 NS Dark Savannah Blond | 3409 |
| 7 NS Savannah Blond | 3410 |
| 8 NS Light Savannah Blond | 3411 |
| 9 NS Very Light Savannah Blond | 3412 |
| 10 NS Platinum Savannah Blond | 3413 |
| WARM NATURALS 100ml | |
| 5.03 Light Warm Natural Brown | 3290 |
| 6.03 Dark Warm Natural Blond | 3291 |
| 7.03 Warm Natural Blond | 3292 |
| 8.03 Light Warm Natural Blond | 3293 |
| 9.03 Very Light Warm Natural Blond | 3294 |
| 10.03 Warm Natural Platinum Blond | 3295 |
| BEIGE 100ml | |
| 4.32 Medium Beige Brown | 16972 |
| 5.32 Light Beige Brown | 16973 |
| 6.32 Dark Beige Blond | 3303 |
| 7.32 Beige Blond | 3304 |
| 8.32 Light Beige Blond | 3305 |
| 9.32 Very Light Beige Blond | 3306 |
| 10.32 Platinum Beige Blond | 3414 |

| | |
|--------------------------------------|-------|
| GOLDEN 100ml | |
| 4.3 Golden Brown | 3307 |
| 5.3 Light Golden Brown | 3308 |
| 6.3 Dark Golden Blond | 3309 |
| 7.3 Golden Blond | 3310 |
| 8.3 Light Golden Blond | 3311 |
| 9.3 Very Light Golden Blond | 3312 |
| INTENSE GOLDEN 100ml | |
| 5.33 Light Intense Golden Brown | 3415 |
| 6.33 Dark Intense Golden Blond | 3416 |
| 7.33 Intense Golden Blond | 3287 |
| 8.33 Light Intense Golden Blond | 3288 |
| 9.33 Very Light Intense Golden Blond | 3289 |
| COPPER 100ml | |
| 4.4 Copper Brown | 3313 |
| 5.4 Light Copper Brown | 3314 |
| 6.4 Dark Copper Blond | 3315 |
| 7.4 Copper Blond | 3316 |
| 8.4 Light Copper Blond | 3317 |
| 9.4 Very Light Copper Blond | 3318 |
| 7.44 Intense Copper Blond | 3319 |
| 6.34 Dark Gold Copper Blond | 3345 |
| 7.34 Gold Copper Blond | 3346 |
| 8.34 Light Gold Copper Blond | 3347 |
| 9.34 Very Light Gold Copper Blond | 3348 |
| MAHOGANY 100ml | |
| 4.5 Mahogany Brown | 3320 |
| 5.5 Light Mahogany Brown | 3321 |
| 6.5 Dark Mahogany Blond | 3322 |
| 7.5 Mahogany Blond | 3323 |
| 5.55 Intense Light Mahogany Brown | 3325 |
| 8.52 Light Mahogany Violet Blond | 3324 |
| CHOCOLATE 100ml | |
| 4.35 Chocolate Brown | 3362 |
| 5.35 Light Chocolate Brown | 3363 |
| 6.35 Dark Chocolate Blond | 3364 |
| 7.35 Chocolate Blond | 3365 |
| 8.35 Light Chocolate Blond | 3366 |
| RED 100ml | |
| 4.62 Red Violet Brown | 3327 |
| 7.62 Red Violet Blond | 3332 |
| 5.56 Light Red Mahogany Brown | 3328 |
| 5.6 Light Red Brown | 3329 |
| 6.6 Dark Red Blond | 3330 |
| 6.66 Dark Intense Red Blond | 3326 |
| 7.66 Intense Red Blond | 3333 |
| 8.66 Light Intense Red Blond | 3417 |
| 7.46 Red Copper Blond | 3331 |
| 8.46 Light Red Copper Blond | 3418 |
| MAT 100ml | |
| 6.7 Intense Dark Matte Blond | 16975 |
| 7.7 Intense Medium Matte Blond | 16976 |
| 8.7 Intense Light Matte Blond | 16977 |

| | |
|--|-------|
| VIOLET 100ml | |
| 2.2 Darkest Violet Brown | 3334 |
| 4.2 Violet Brown | 3335 |
| 5.2 Light Violet Brown | 3336 |
| 6.2 Dark Violet Blond | 3337 |
| 7.2 Violet Blond | 3419 |
| 5.22 Light Intense Violet Brown | 3338 |
| TOBACCO 100ml | |
| 4.23 Tobacco Brown | 3341 |
| 5.23 Light Tobacco Brown | 3342 |
| 6.23 Dark Tobacco Blond | 3343 |
| 7.23 Tobacco Blond | 3344 |
| 8.23 Light Tobacco Blond | 3420 |
| HAZELNUT 100ml | |
| 4.73 Hazelnut Brown | 3421 |
| 5.73 Light Hazelnut Brown | 3422 |
| 6.73 Dark Hazelnut Blond | 3423 |
| 7.73 Hazelnut Blond | 3424 |
| 8.73 Light Hazelnut Blond | 3425 |
| 9.73 Very Light Hazelnut Blond | 3426 |
| MOKA 100ml | |
| 4.88 Moka Brown | 3427 |
| 5.88 Light Moka Brown | 3428 |
| CARAMEL 100ml | |
| 5.8 Gianduia Caramel Brown | 16974 |
| 6.8 Dark Caramel Blond | 3429 |
| 7.8 Caramel Blond | 3430 |
| IRISÉ 100ml | |
| 8.21 Light Irisé Ash Blond | 16970 |
| 10.21 Platinum Irisé Ash Blond | 16971 |
| SUPERLIGHTENERS 100ml (mix ratio 1:2) | |
| 10.0 Super Light Natural Blond | 3349 |
| 101 Super Light Ash Blond | 3352 |
| 1013 Super Light Pearl Blond | 3351 |
| 10.3 Super Light Golden Blond | 3350 |
| 11.0 Platinum Blond | 3353 |
| 1113 Pearl Platinum Blond | 3355 |
| 11.3 Golden Platinum Blond | 3354 |
| 12.00 Extreme Blond | 3431 |
| 12.03 Extreme Golden Blond | 3432 |
| 12.11 Extreme Ash Blond | 3434 |
| 12.13 Extreme Pearl Blond | 3433 |
| CORRECTIVE AGENTS 100ml | |
| Yellow Corrective | 3356 |
| Red Corrective | 3357 |
| Orange Corrective | 3437 |
| Violet Corrective | 3358 |
| Blue Corrective | 3359 |
| Green Corrective | 3360 |
| Clear Corrective | 3361 |
| GREY 100ml | |
| Light Grey | 3339 |
| Dark Grey | 3340 |
| TONERS 100ml | |
| Lilac | 3435 |
| Silver | 3436 |



Ideal to work on the lengths of hair (with 7 or 10 vol. peroxide) after having done the roots with permanent shades.

Also ideal for using on treated hair (highlighted, permed, bleached) as ammonia free colors have a greater restructuring power on damaged, processed hair.

52 Colors: 49 are the same as permanent shades with 3 special shades only available in ammonia free. Also can be used between tints for temporary retouches.

| | |
|--|-------|
| INTENSE NATURALS - AMMONIA FREE 100ml | |
| 1 Black | 10050 |
| 1.10 Blue Black | 10051 |
| 2 Darkest Brown | 10055 |
| 3 Dark Brown | 10056 |
| 4 Brown | 10057 |
| 5 Light Brown | 10062 |
| 6 Dark Blond | 10072 |
| 7 Blond | 10081 |
| 8 Light Blond | 10090 |
| 9 Very Light Blond | 10095 |
| 10 Natural Platinum Blond | 10052 |
| ASH NATURALS - AMMONIA FREE 100ml | |
| 5.01 Light Ash Natural Brown | 10063 |
| 7.01 Ash Natural Blond | 10082 |
| 9.01 Very Light Ash Natural Blond | 10096 |
| BEIGE - AMMONIA FREE 100ml | |
| 10.32 Platinum Beige Blond | 10054 |
| 8.32 Light Beige Blond | 10092 |
| 9.32 Very Light Beige Blond | 10097 |
| GOLDEN - AMMONIA FREE 100ml | |
| 5.3 Light Golden Brown | 10066 |
| 6.3 Dark Golden Blond | 10074 |
| 7.3 Golden Blond | 10084 |
| 8.3 Light Golden Blond | 10091 |
| COPPER - AMMONIA FREE 100ml | |
| 4.4 Copper Brown | 10059 |
| 5.4 Light Copper Brown | 10068 |
| 6.34 Dark Golden Copper Blond | 10075 |
| 6.4 Dark Copper Blond | 10077 |
| 7.4 Copper Blond | 10086 |
| 8.34 Light Gold Copper Blond | 10093 |
| 8.4 Light Copper Blond | 10094 |
| MAHOGANY - AMMONIA FREE 100ml | |
| 5.5 Light Mahogany Brown | 10069 |
| 6.5 Dark Mahogany Blond | 10078 |
| 7.5 Mahogany Blond | 10088 |
| CHOCOLATE - AMMONIA FREE 100ml | |
| 5.35 Light Chocolate Brown | 10067 |
| 6.35 Dark Chocolate Blond | 10076 |
| 7.35 Chocolate Blond | 10085 |

| | |
|---|-------|
| RED - AMMONIA FREE 100ml | |
| 4.62 Red Violet Brown | 10060 |
| 5.6 Light Red Brown | 10070 |
| 6.6 Dark Red Blond | 10079 |
| 7.46 Copper Red Blond | 10087 |
| VIOLET - AMMONIA FREE 100ml | |
| 4.2 Violet Brown | 10058 |
| 5.22 Light Intense Violet Brown | 10064 |
| 6.2 Dark Violet Blond | 10073 |
| TOBACCO - AMMONIA FREE 100ml | |
| 5.23 Light Tobacco Brown | 10065 |
| 7.23 Tobacco Blond | 10083 |
| MOKA - AMMONIA FREE 100ml | |
| 4.88 Moka Brown | 10061 |
| 5.88 Light Moka Brown | 10071 |
| CARAMEL - AMMONIA FREE 100ml | |
| 6.8 Dark Caramel Blond | 10080 |
| 7.8 Caramel Blond | 10089 |
| SUPERLIGHTENERS (MIX RATIO 1:2) - AMMONIA FREE 100ml | |
| 10.1 Super Light Ash Blond | 10053 |
| SPECIAL SHADES - AMMONIA FREE 100ml (not available in permanent color) | |
| 9.21 Very Light Ice Blond | 5242 |
| 5.666 Extra Intense Red Light Brown | 5240 |
| 7.666 Extra Intense Red Blond | 5241 |
| CORRECTIVE AGENT 100ml | |
| Clear | 10098 |



BY POPULAR DEMAND - CDC CREAM PEROXIDE

Should be used in conjunction with CDC Permanent color range to enhance the final result. Rich in conditioning & protective agents. Scented for stylist & customer's comfort. Made in Italy.



7 Volume
150ml
1000ml

10100
10099

10 Volume
To tone & give 1 level lift.
1000ml
7271

20 Volume
Covers grey & gives 2 levels lift.
1000ml
7272

30 Volume
Achieves 3 levels of lift & can be used with superlightener series.
1000ml
7273

40 Volume
Achieves 4 levels of lift & must be used with superlightener series.
1000ml
7274

Tuft Swatch Chart
125 permanent, 5 correctors & 52 ammonia-free shades.
3403



Dust Free Bleach Powder, 500g
White
3375



Blue
3376



From Dark Chocolates & Vibrant Coppers to Superlight Blondes, OSMO IKON offers extensive coloring options & easy application. Serious colorists are free to express their creativity & versatility. The micro-sized OSMO IKON color molecules are easily absorbed in the hair cuticle, allowing for a far lower ammonia content in the formula. Hair conditioning is significantly improved. MCT molecules are locked into the cuticle, providing longer-lasting color clarity, complete grey coverage & multi-dimensional shine.

PLEASE ENQUIRE ABOUT OUR OPENING OSMO IKON DEALS!

| | |
|-----------------------------------|--------------|
| NATURALS 100ml | |
| 1.0 Black | 8064 |
| 3.0 Dark Brown | 8102 |
| 4.0 Medium Brown | 8104 |
| 5.0 Light Brown | 8110 |
| 6.0 Dark Blonde | 8121 |
| 7.0 Medium Blonde | 8130 |
| 8.0 Light Blonde | 8138 |
| 9.0 Very Light Blonde | 8146 |
| 10.0 Lightest Blonde | 8094 |
| COOL NATURALS 100ml | |
| 5.00 Natural Cold | 10769 |
| 6.00 Natural Cold | 10770 |
| 7.00 Natural Cold | 10771 |
| 8.00 Natural Cold | 10772 |
| 9.00 Natural Cold | 10773 |
| WARM NATURALS 100ml | |
| 4NW Medium Natural Warm Brown | 8108 |
| 5NW Light Natural Warm Brown | 8119 |
| 6NW Dark Natural Warm Blonde | 8129 |
| 7NW Medium Natural Warm Blonde | 8137 |
| BAHIA 100ml | |
| 5.003 Light Chocolate Brown | 8111 |
| 6.003 Dark Chocolate Blonde | 8122 |
| 7.003 Medium Chocolate Blonde | 8131 |
| 8.003 Light Chocolate Blonde | 8139 |
| 9.003 Very Light Chocolate Blonde | 8147 |
| SPECIAL BLACK 100ml | |
| 11 Black - Blue | 8093 |
| ASH 100ml | |
| 41 Medium Ash Brown | 10774 |
| 5.1 Light Ash Brown | 10775 |
| 6.1 Dark Ash Blonde | 10776 |
| 7.1 Medium Ash Blonde | 10777 |
| 8.1 Light Ash Blonde | 10778 |
| 9.1 Very Light Ash Blonde | 10779 |
| 10.1 Lightest Ash Blonde | 16666 |

| | |
|---|--------------|
| INTENSE ASH 100ml | |
| 6.11 Intense Ash Dark Blonde | 16711 |
| 7.11 Intense Ash Blonde | 16712 |
| 8.11 Intense Ash Light Blonde | 16663 |
| 9.11 Intense Ash Very Light Blonde | 16665 |
| GOLDEN 100ml | |
| 5.3 Light Golden Brown | 8114 |
| 6.3 Dark Golden Blonde | 8124 |
| 7.3 Medium Golden Blonde | 8133 |
| 8.3 Light Golden Blonde | 8142 |
| 9.3 Very Light Golden Blonde | 8150 |
| NATURAL GOLDEN ASH 100ml | |
| 8.13 Light Natural Ash Golden Blonde | 8141 |
| 9.13 Very Light Natural Ash Golden Blonde | 8149 |
| COPPER 100ml | |
| 5.4 Light Copper Brown | 8115 |
| 6.4 Dark Copper Blonde | 8125 |
| COPPER INTENSE 100ml | |
| 7.44 Medium Intense Copper Blonde | 8135 |
| 8.44 Light Intense Copper Blonde | 8143 |



| | |
|-----------------------------------|--------------|
| COPPER GOLDEN 100ml | |
| 6.43 Dark Copper Golden Blonde | 8126 |
| 7.43 Medium Copper Golden Blonde | 8134 |
| VIOLET 100ml | |
| 5.22 Light Intense Violet Brown | 8113 |
| 8.2 Light Violet Blonde | 10780 |
| 10.2 Lightest Violet Blonde | 10782 |
| MAHOGANY 100ml | |
| 4.5 Medium Mahogany Brown | 8106 |
| 5.5 Light Mahogany Brown | 8117 |
| 6.55 Dark Intense Mahogany Blonde | 8127 |
| ABSOLUTE RED 100ml | |
| 4.62 Medium Red Violet Brown | 8107 |
| 5.66 Light Intense Red Brown | 8118 |
| 8.62 Light Red Violet Blonde | 8144 |
| 6.666 Special Red 6 | 16713 |
| 7.666 Special Red 7 | 16662 |
| 8.666 Special Red 8 | 16664 |
| CHOCOLATE 100ml | |
| 4 Coffee | 16702 |
| 5 Choc Dark Chocolate | 16703 |
| 6 Choc Milk Chocolate | 16704 |
| BLONDE BOOST 100ml | |
| 0.00 Blonde Boost | 8092 |

| | |
|---|--------------|
| SUPER BLONDES 100ml | |
| 12.0 Natural Scandinavian Blonde | 8099 |
| 12.01 Ice Ash Scandinavian Blonde | 16667 |
| 12.10 Intense Ash Scandinavian Blonde | 16668 |
| 12.11 Silver Scandinavian Blonde | 16669 |
| 12.12 Pearl Scandinavian Blonde | 16670 |
| 12.2 Violet Scandinavian Blonde | 16403 |
| 12.21 Iris Scandinavian Blonde | 16671 |
| 12.25 Violet Mahogany Scandinavian Blonde | 16672 |
| 12.32 Beige Scandinavian Blonde | 16700 |
| 12.62 Pink Scandinavian Blonde | 16701 |
| COLOR CORRECTORS 100ml | |
| Blue Corrector | 8153 |
| Red Corrector | 8154 |
| Yellow Corrector | 8155 |
| COLOR INTENSIFIERS 100ml | |
| Pearl Intensifier | 10786 |
| Silver Intensifier | 10787 |
| Violet Intensifier | 10788 |
| GREY METALLICS 100ml | |
| Dark Anthracite | 13837 |
| Medium Graphite | 13838 |
| Light Aluminium | 13839 |
| PASTEL METALLICS 100ml | |
| Apricot | 14484 |
| Strawberry | 14485 |
| Lilac | 14486 |
| Aquamarine | 14487 |
| Ice | 14488 |

OSMO IKON Tuft Color Shade Guide Chart with 96 Shades
Latest revised tuft shade guide with new IKON colors, with level finder
16710

OSMO IKON Technical Manual
18252



IKON CREAM DEVELOPERS

The perfect complement to OSMO IKON Permanent Colour, as the developer deeply penetrates the hair fiber for maximum saturation of vibrant color.
1 Litre



5 Volume
16568

10 Volume
8156

20 Volume
8157

30 Volume
8158

40 Volume
8159

IKON POWER LIFT BLEACH

Dust-Free
500g

Blue
8151



White
8152



IKON HI-LIFT

What is Hi-Lift tint? Hi-Lift tint is for those clients who refuse to bleach their hair. Still a permanent hair dye, but works differently because of its unique formula. Hi-Lift colors contain more ammonia, more dye pigment, & are mixed with a double ratio of 40 Volume Cream Developer.

Hi-Lifts are the booster rockets in your hair color arsenal. They are the strongest colors in your palette, giving the maximum amount of lightening & tonal deposit. These magic colors are not bleach, as bleach will lighten the hair, but will have no tonal refining capabilities.

Mixing ratio: 1:1.5 - Mix Hi-Lift with 10 Vol, 20 Vol or 30 Vol depending on how much lift is needed. Has a processing time of 35-45 minutes.

Features & Benefits:

- Can be used over tint - hi-lifts cut through tint where normal reds will not.
- Achieves maximum lift without the need for bleach.
- High levels of pigment deliver intense, rich & vibrant results.
- Higher amount of ammonia for supreme lightening levels.
- Can be used on a darker level to create a vibrant red.
- Can be added to other reds in the range as a booster.
- Range includes 3 rich & wearable shades, all in 100ml tubes.



Red
17729



Violet Red
17730



Copper Red
17731

IKON Porosity Equaliser Active pH Re-Balancer
A leave-in treatment spray to help restore the hair's natural pH level & equalize porosity levels following a chemical or lightening treatment.

Can be used after using coloring to counter the effects of chemicals, & before to create a clean canvas to help optimize color application.

Formulated with Green Tea Extract & Prickly Pear Oil to reduce static, add shine condition. Leaves hair shiny, smooth & manageable after coloring.
250ml
18387



IKON PASTEL METALLICS COLLECTION

A range of 5 gorgeous, fashion-led pastel metallic shades that can be applied direct for intense results or diluted for beautiful watercolor effects.

Mixing Ratios:
For intense reflect: 1:1.5
For slight reflex: 1:3
For watercolor reflex: 1:4
100ml



Apricot
14484



Strawberry
14485



Lilac
14486



Aquamarine
14487



Ice
14488



#ASKFORWELLA

INTRODUCING
**OUR PUREST
COLOR EVER**

PERMANENT COLOR WITH **ME⁺** TECHNOLOGY

- » PURE, BALANCED COLOR RESULTS WITH NATURAL DEPTH AND SHINE.
- » SIGNIFICANTLY LESS HAIR DAMAGE, COLOR AFTER COLOR.
- » ME⁺, UP TO 60x LESS LIKELY TO DEVELOP A NEW ALLERGY TO HAIR COLOR.



KOLESTON PERFECT ME+ All Tubes 60ml

PURE NATURALS: PURE

| | | |
|------|-------------------|-------|
| 10/0 | Lightest Blonde | 15550 |
| 9/0 | Very Light Blonde | 15540 |
| 8/0 | Light Blonde | 15484 |
| 7/0 | Medium Blonde | 15520 |
| 6/0 | Dark Blonde | 15506 |
| 5/0 | Light Brown | 15496 |
| 4/0 | Medium Brown | 15486 |
| 3/0 | Dark Brown | 15489 |
| 2/0 | Black | 15487 |

PURE NATURALS: WARM

| | | |
|------|--------------------------------|-------|
| 9/04 | Very Light Natural Red Blonde | 15542 |
| 9/03 | Very Light Natural Gold Blonde | 15541 |
| 8/07 | Light Blonde Natural Brown | 15530 |
| 6/07 | Dark Blonde Natural Brown | 15507 |
| 4/07 | Medium Brown Natural Brown | 15491 |

PURE NATURALS: RESISTANT COVER

| | | |
|-------|-----------------------------|-------|
| 99/0 | Very Light Blonde Intensive | 15543 |
| 88/02 | Light Blonde Intensive | 19033 |
| 88/0 | Light Blonde Intensive | 15531 |
| 77/02 | Medium Blonde Intensive | 19029 |
| 77/0 | Medium Blonde Intensive | 15521 |
| 66/02 | Intensive Dark Blonde | 19027 |
| 66/0 | Dark Blonde Intensive | 15508 |
| 55/0 | Light Brown Intensive | 15497 |
| 55/02 | Light Brown Intensive | 19025 |
| 44/0 | Medium Brown Intensive | 15492 |
| 33/0 | Dark Brown Intensive | 15490 |

RICH NATURALS: COOL

| | | |
|-------|---------------------------------|-------|
| 10/97 | Lightest Blonde Cendre Brown | 15560 |
| 10/96 | Lightest Blonde Cendre Violet | 15559 |
| 10/95 | Lightest Blonde Cendre Mahogany | 15064 |
| 10/86 | Lightest Blonde Pearl Violet | 15557 |
| 10/8 | Lightest Blonde Pearl | 15556 |
| 10/38 | Lightest Blonde Golden Pearl | 15555 |
| 10/16 | Lightest Blonde Ash Violet | 15554 |
| 10/1 | Lightest Blonde Ash | 15553 |
| 9/97 | Very Light Blonde Cendre Brown | 15549 |
| 9/96 | Very Light Blonde Cendre Violet | 15548 |
| 9/81 | Very Light Blonde Pearl Ash | 15062 |
| 9/8 | Very Light Blonde Pearl | 15547 |
| 9/16 | Very Light Blonde Ash Violet | 15545 |
| 9/1 | Very Light Blonde Ash | 15544 |
| 8/97 | Light Blonde Cendre Brown | 15539 |
| 8/96 | Light Blonde Cendre Violet | 15538 |

RICH NATURALS: COOL

| | | |
|------|--------------------------|-------|
| 7/18 | Medium Blonde Ash Pearl | 15061 |
| 7/17 | Medium Blonde Ash Brown | 15523 |
| 7/1 | Medium Blonde Ash | 15522 |
| 6/97 | Dark Blonde Cendre Brown | 15511 |
| 6/91 | Dark Blonde Cendre Ash | 19026 |
| 6/2 | Matt Dark Blonde | 15510 |
| 6/1 | Dark Blonde Ash | 15509 |
| 5/2 | Light Brown Matt | 15499 |
| 5/18 | Light Brown Ash Pearl | 19024 |
| 5/1 | Light Brown Ash | 15498 |
| 2/8 | Black Pearl | 15488 |
| 8/2 | Matt Light Blonde | 15533 |
| 8/1 | Light Blonde Ash | 15532 |
| 4/3 | Medium Brown Gold | 16678 |

RICH NATURALS: WARM

| | | |
|------|----------------------------|-------|
| 9/31 | Very Light Blonde Gold Ash | 15546 |
| 8/3 | Light Gold Blonde | 19031 |
| 7/36 | Medium Blonde Gold Violet | 19028 |
| 7/31 | Medium Blonde Gold Ash | 15524 |

VIBRANT REDS: COOL

| | | |
|-------|--|-------|
| 8/45 | Light Blonde Red Mahogany | 15535 |
| 77/46 | Medium Red Violet Blonde Intensive | 19030 |
| 6/41 | Dark Blonde Red Ash | 15513 |
| 6/45 | Dark Blonde Red Mahogany | 15515 |
| 66/46 | Dark Blonde Intensive Red Violet Intensive | 15571 |
| 5/41 | Light Brown Red Ash | 15500 |
| 5/43 | Light Blonde Red Gold | 16679 |
| 55/46 | Light Brown Intensive Red Violet Intensive | 15567 |
| 5/5 | Light Brown Mahogany | 15501 |
| 55/65 | Light Brown Intensive Violet Mahogany Intensive | 15568 |
| 55/66 | Light Brown Intensive Violet Intensive | 15569 |
| 44/65 | Medium Brown Intensive Violet Mahogany Intensive | 15565 |
| 33/66 | Intensive Dark Brown Intensive Violet | 15562 |

VIBRANT REDS: WARM

| | | |
|-------|--|-------|
| 8/34 | Light Gold Red Blonde | 19032 |
| 8/43 | Light Blonde Red Gold | 15534 |
| 88/43 | Blonde Red Gold Intensive | 19034 |
| 77/43 | Medium Blonde Intensive Red Gold Intensive | 15572 |
| 7/47 | Medium Blonde Red Brown | 15526 |
| 6/34 | Dark Blonde Golden Red | 15512 |
| 6/43 | Dark Blonde Red Gold | 15514 |
| 66/44 | Dark Blonde Intensive Red Intensive | 15570 |
| 44/44 | Medium Brown Intensive Red Intensive | 15563 |

DEEP BROWNS: COOL

| | | |
|------|----------------------------|-------|
| 7/71 | Medium Blonde Brown Ash | 15528 |
| 6/75 | Dark Blonde Brown Mahogany | 15518 |
| 6/71 | Dark Blonde Brown Ash | 15517 |
| 5/75 | Light Brown Mahogany | 15504 |
| 5/71 | Light Brown Ash | 15503 |
| 4/75 | Medium Brown Mahogany | 15494 |
| 4/71 | Medium Brown Ash | 15493 |

DEEP BROWNS: WARM

| | | |
|------|-------------------------------|-------|
| 8/74 | Light Blonde Brown Red | 15537 |
| 8/7 | Light Blonde Brown | 15536 |
| 7/77 | Medium Blonde Brown Intensive | 15529 |
| 7/7 | Medium Blonde Brown | 15527 |
| 6/77 | Dark Blonde Brown Intensive | 15519 |
| 6/7 | Dark Blonde Brown | 15516 |
| 5/77 | Light Brown Brown Intensive | 15505 |
| 5/7 | Light Brown Brown | 15502 |
| 4/77 | Medium Brown Brown Intensive | 15495 |

SPECIAL BLONDES: COOL

| | | |
|-------|-------------------------------|-------|
| 12/96 | Special Blonde Cendre Violet | 15588 |
| 12/89 | Special Blonde Pearl Cendre | 15587 |
| 12/81 | Special Blonde Pearl Ash | 15586 |
| 12/61 | Special Blonde Violet Ash | 15585 |
| 12/22 | Special Blonde Matt Intensive | 15584 |
| 12/11 | Special Blonde Ash Intensive | 15485 |
| 12/1 | Special Blonde Ash | 15583 |

SPECIAL BLONDES: NATURAL

| | | |
|------|------------------------|-------|
| 12/0 | Special Blonde Natural | 15582 |
|------|------------------------|-------|

SPECIAL MIX: COOL

| | | |
|------|------------------|-------|
| 0/88 | Blue Intensive | 15581 |
| 0/66 | Violet Intensive | 15580 |
| 0/65 | Violet Mahogany | 15579 |
| 0/28 | Matt Blue | 15574 |
| 0/11 | Ash Intensive | 15573 |

SPECIAL MIX: WARM

| | | |
|------|----------------|-------|
| 0/44 | Red Intensive | 15578 |
| 0/43 | Red Gold | 15577 |
| 0/33 | Gold Intensive | 15576 |
| 0/30 | Gold | 15575 |

BLEACHES

| | |
|-------|---|
| 7411 | Blondor Multi-Blonde Bleach Powder 400g |
| 19035 | Blondorplex Multi-Blonde Bleach Powder 400g |



CREME DEVELOPERS - All Bottles 1 Litre

| | |
|-------|--------------------------------|
| 15591 | Welloxon Perfect 1.9% (6 Vol.) |
| 15592 | Welloxon Perfect 4% (13 Vol.) |
| 7412 | Welloxon Perfect 6% (20 Vol.) |
| 7413 | Welloxon Perfect 9% (30 Vol.) |
| 7414 | Welloxon Perfect 12% (40 Vol.) |



COLOR TOUCH - All Tubes 60ml

| | | |
|-------|-------------------------------------|-------|
| 10/81 | Lightest Pearl Ash Blonde | 7761 |
| 10/34 | Lightest Blonde Gold Red | 19037 |
| 10/6 | Very Light Blonde Violet | 7760 |
| 10/0 | Lightest Blonde | 7759 |
| 9/97 | Very Light Blonde Cendre Brown | 15596 |
| 9/96 | Very Light Blonde Cendre Violet | 19047 |
| 9/86 | Very Light Blonde Pearl Violet | 19046 |
| 9/75 | Very Light Brunette Mahogany Blonde | 19045 |
| 9/16 | Very Light Ash Violet Blonde | 7763 |
| 9/01 | Very Light Natural Ash Blonde | 7762 |
| 8/81 | Light Pearl Ash Blonde | 7766 |
| 8/41 | Light Blonde Red Ash | 19044 |
| 8/38 | Light Gold Pearl Blonde | 13718 |
| 8/35 | Light Gold Mahogany Blonde | 19043 |
| 8/3 | Light Gold Blonde | 7765 |
| 8/0 | Light Blonde | 7764 |
| 7/97 | Medium Blonde Cendre Brown | 15595 |
| 7/89 | Medium Blonde Pearl Cendre | 19042 |
| 7/86 | Medium Blonde Pearl Violet | 19041 |
| 7/7 | Medium Brunette Blonde | 7771 |
| 7/43 | Medium Red Gold Blonde | 7770 |
| 7/3 | Medium Gold Blonde | 7769 |
| 7/1 | Medium Blonde Ash | 19040 |
| 7/03 | Medium Natural Gold Blonde | 7768 |
| 7/0 | Medium Blonde | 7767 |
| 6/77 | Dark Intense Brunette Blonde | 7779 |
| 6/75 | Dark Brunette Mahogany Blonde | 7778 |
| 6/71 | Dark Brunette Ash Blonde | 7777 |
| 6/7 | Dark Brunette Blonde | 7776 |
| 6/4 | Dark Red Blonde | 7774 |
| 6/37 | Dark Gold Brunette Blonde | 7773 |
| 6/0 | Dark Blonde | 7772 |
| 5/97 | Light Brown Cendre Brown | 15594 |
| 5/71 | Light Brunette Ash Brown | 7784 |
| 5/5 | Light Mahogany Brown | 7783 |
| 5/4 | Light Red Brown | 7782 |
| 5/3 | Light Gold Brown | 7781 |
| 5/1 | Light Brown Ash | 19039 |
| 5/0 | Light Brown | 7780 |
| 4/77 | Medium Intense Brunette Blonde | 7789 |

COLOR TOUCH

| | | |
|------|-----------------------------|-------|
| 4/71 | Medium Brunette Ash Brown | 7788 |
| 4/0 | Medium Mahogany | 7785 |
| 3/66 | Dark Intensive Violet Brown | 7791 |
| 3/0 | Dark Brown | 7790 |
| 2/8 | Black Pearl | 19038 |
| 2/0 | Black | 7792 |

COLOR TOUCH INTENSIVE REDS

| | | |
|-------|-------------------------------------|------|
| 77/45 | Medium Int Red Mahogany Blonde | 7793 |
| 66/45 | Dark Intense Red Mahogany Blonde | 7794 |
| 66/44 | Dark Intense Red Blonde | 7795 |
| 55/65 | Light Intense Violet Mahogany Brown | 7796 |
| 55/54 | Light Intense Mahogany Red Brown | 7797 |

COLOR TOUCH MIXTONES

| | | |
|------|-----------------|------|
| 0/68 | Violet Pearl | 7802 |
| 0/56 | Mahogany Violet | 7801 |
| 0/45 | Red Mahogany | 7800 |

DEVELOPERS All Bottles 1 Litre

| | |
|---|------|
| Touch Crème Lotion 1.9% (6 Vol.) | 7431 |
| Touch Intensive Crème Lotion 4% (13 Vol.) | 7432 |

BLONDOR FREELIGHTS

Powder
Ideal for Balayage
400g
12969



Freights Developer
1 Litre
20 Vol (6%)
12970
30 Vol (9%)
12971
40 Vol (12%)
12972



ILLUMINA COLOR - All Tubes 60ml

| | | |
|-------|-----------------------------------|-------|
| 10/93 | Light Cendre Gold Blonde | 12032 |
| 10/81 | Lightest Blonde Pearl Ash | 19048 |
| 10/69 | Lightest Cendre Blonde | 12004 |
| 10/38 | Lightest Gold Pearl Blonde | 12003 |
| 10/36 | Lightest Gold Violet blonde | 12002 |
| 10/1 | Lightest Ash Blonde | 12001 |
| 10/05 | Lightest Natural Mahogany Blonde | 12000 |
| 10/ | Lightest Blonde | 11999 |
| 9/7 | Very Light Brown Blonde | 12031 |
| 9/19 | Very Light Blonde Ash Cendre | 19050 |
| 9/59 | Very Light Blonde Mahogany Cendre | 19051 |
| 9/60 | Very Light Violet Natural Blonde | 12030 |
| 9/43 | Very Light Red Gold Blonde | 12029 |
| 9/03 | Very Light Natural Gold Brown | 12028 |
| 9/ | Very Light Blonde | 12027 |
| 8/93 | Light Blonde Cendre Gold | 19049 |
| 8/69 | Light Violet Cendre Blonde | 12026 |
| 8/38 | Light Gold Pearl Blonde | 12025 |
| 8/37 | Light Gold Brunette Blonde | 13716 |
| 8/13 | Light Ash Gold Blonde | 13717 |
| 8/1 | Light Ash Blonde | 12024 |
| 8/05 | Light Natural Mahogany Blonde | 12023 |
| 8/ | Light Brown | 12022 |
| 7/81 | Medium Pearl Ash Blonde | 12021 |
| 7/7 | Medium Brown Blonde | 12020 |
| 7/43 | Medium Red Gold Blonde | 12019 |
| 7/35 | Medium Gold Mahogany Blonde | 12018 |
| 7/31 | Medium Gold Ash Blonde | 12017 |
| 7/3 | Medium Gold Blonde | 12016 |
| 7/ | Medium Blonde | 12015 |
| 6/76 | Dark Brown Violet Blonde | 12014 |
| 6/37 | Dark Gold Brunette Blonde | 13715 |
| 6/19 | Dark Ash Cendre Blonde | 12013 |
| 6/16 | Dark Ash Violet Brown | 12012 |
| 6/ | Dark Blonde | 12011 |
| 5/81 | Light Pearl Ash Brown | 12010 |
| 5/7 | Light Brown Brown | 12009 |
| 5/43 | Light Red Gold Brown | 12008 |
| 5/35 | Light Gold Mahogany Brown | 12007 |
| 5/02 | Light Natural Matt Brown | 15593 |
| 5/ | Light Brown | 12006 |
| 4/ | Medium Brown | 12005 |



10 minuti EXPRESS



A REVOLUTION in the world of coloring...

The modern permanent color solution for modern color clients.

Clients are increasingly hesitant to spend much time in a salon. They are also increasingly more concerned about the ingredients used in coloring products, demanding safer & friendlier ingredients, as well as more compassionate manufacturing. 21 VENTUNO 10minuti Express is the ultra-fast coloring solution for current times, & is perfect for the health & environmentally-conscious client.

A permanent hair coloring kit with three major advantages:

1. Ultra-fast & non-progressive processing time of 10 minutes, instead of the usual lengthy 40 - 45 minutes.
2. Available in kit form, with everything needed in one box, ideal for use in the salon and/or selling to clients for use at home.
3. Formulated with safety in mind - vegan, free-from usual undesirable ingredients & dermatologically tested for maximum gentleness.

A range of 16 perfectly calibrated, ultra-fast & non-progressive shades for long-lasting results & perfect, uniform coverage, with lightening up to 4 tones. Unleash the power of concentrated pigments in just 10 minutes. Thoroughly tested both in vivo & in vitro, dermatologically tested to ensure optimal skin tolerability.

Benefits for the salon:

- Quicker processing time for accelerated productivity
- Color more clients in a day - color & style in less than an hour
- Covers 100% of white & grey hair
- Easy application & non-progressive processing
- A trusted, safe & high quality color system for clients to use at home
- Non-Progressive; Old technology express colors have the flaw of being progressive, where color continuously darkens if left on for too long. 10minuti Express 21 VENTUNO is non-progressive color.

Active Ingredients:

TAU PLEX - Improves hair elasticity by restoring natural physiology. Hair is more resistant to breakage, preserving its cuticular structure, improving shine in the process. Color is more uniform over the entire length, allowing for 100% grey coverage with lasting color.

Amino Acid Mix - Amino acid mix of vegetable origin with restructuring, repairing & reinforcing features of keratin. A vegan friendly mix that nourishes & replenishes the hair.

The first sustainable & fast color system. Ecological, sustainable, vegan & safe.

Free from Gluten, Parabens, Silicones, MEA, Phosphate, Formaldehyde & SLS/SLES.

What's in the kit?

- 1 x 60ml tube 10 minute express permanent color
- 1 x 60ml 20 volume peroxide in shaker bottle with removable dispensing spout
- 2 x 15ml Post Color Restructuring Mask sachets
- 1 x 15ml Velvety Hair Serum sachet
- Instructions

Color Printed Chart, 16 Colors
Compact color chart with printed swatches.
17451

