

COMBS

COMBS

COMBS

COMBS

COMBS

COMBS

COMBS

COMBS

COMBS

COMBS

COMBS

COMBS

COMBS

When performing chemical treatments & using styling tools, hair is at its most vulnerable & can easily break. If the incorrect comb is used, the rigid teeth of regular/carbon combs can scrape & break the hair strand.

Presenting FLEXINITE Smart Comb Technology, whose teeth are seamless, causing no damage & flexible movement through hair. When cool, the FLEXINITE regains its original shape. It is light, washable & incredibly strong.



Tail Comb  
13693



Wide Tail  
13694



Wide Tail, Long  
13695



Pin Tail, Fine  
13697



Handle  
13700



Afro Large  
13701



Large Mesh  
13702



Curved Handle  
13703



Gents  
13704



Ladies  
13705



Cutting  
8.0 inch  
13706



Trimmer Cutting  
13707

### BLACK DIAMOND DELRIN COMBS

Black Diamond combs are made from DuPont Delrin, which is an alternative to hard rubber combs. Delrin provides great heat resistance but unlike hard rubber Delrin will not become brittle with age. These combs are durable, chemical resistant & anti-static with smooth teeth & flexibility.



Long Stylist  
8.5 inch  
1068



Pintail  
1069



Tail  
1070



Stylist  
7 inch  
1071



Pintail Teaser  
8.5 inch  
5274



Afro Small  
1695



Lady Star  
1698



Large Mesh  
1699



Cutting  
7.0 inch  
1700



Fine Teeth Tail  
1702



Medium Teeth Tail  
1703



Fine Teeth Pin  
1704



Wide Teeth Pin  
1706



Teasing  
1707



Wide Teeth Tail  
1708



Barber  
7.5 inch  
1709



Turbo Cut  
1710



Cutting  
8.5 inch  
1711



Long Tail  
4758

Blue Carbon



3 Comb  
7.0 inch  
19867



4 Comb  
7.0 inch  
19868



15 Comb  
7.5 inch  
19869



C16 Long Tail  
9.0 inch  
19870



C17 Tail  
8.25 inch  
19871



C18 Pin Tail  
8.75 inch  
19872

**NEW**

Durable, affordable & uncompromising quality.



SL 8 Even Teeth  
7.5 inch  
**1714**



SL 2 Styling Wide/Fine  
7.5 inch  
**1715**



SL 5 Long Cutting  
8.5 inch  
**1719**



SL 6 Universal  
7.5 inch  
**1720**

TRIUMPH MASTER - Durable plastic, uncompromising in quality. Made in Germany.

**TRIUMPH** *Master*



Mesh  
7 inch  
**6010**



Coarse/Fine Teeth  
7 inch  
**4915**



Cutting  
8 inch  
**4916**



Fork, Steel Pins  
8 inch  
**4920**



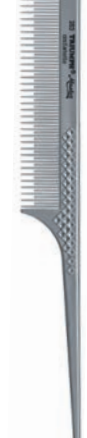
Large Mesh & Drying  
7.5 inch  
**4919**



Handle  
**4918**



Tail  
8 inch  
**4921**



Teasing  
8.5 inch  
**4924**

441 Rubber Tail Combs



Back  
1637

Teal  
1641

441 Rubber Tail Combs, Neon Mix  
1639



400 Rubber Combs



Black  
1632

Teal  
1636

400 Rubber Combs, Fresh Mix  
1633



400 Rubber Combs, Neon Mix  
1634



**SALON ELEMENTS**

Salon Elements Wide Tail  
9 inch, Economical, Assorted Colors  
4418



**NANO TECHNOLOGY COMBS**

Professional Nano Technology Comb with flexibility, antimicrobial technology & chemical-resistance. Excellent quality & durable design for sculpted looks.



Basin  
4022

Cutting, Fine  
7.5 inch  
4023

Pin Tail  
4024

Dressing  
7.5 inch  
4025

Cutting  
7.5 inch  
4026

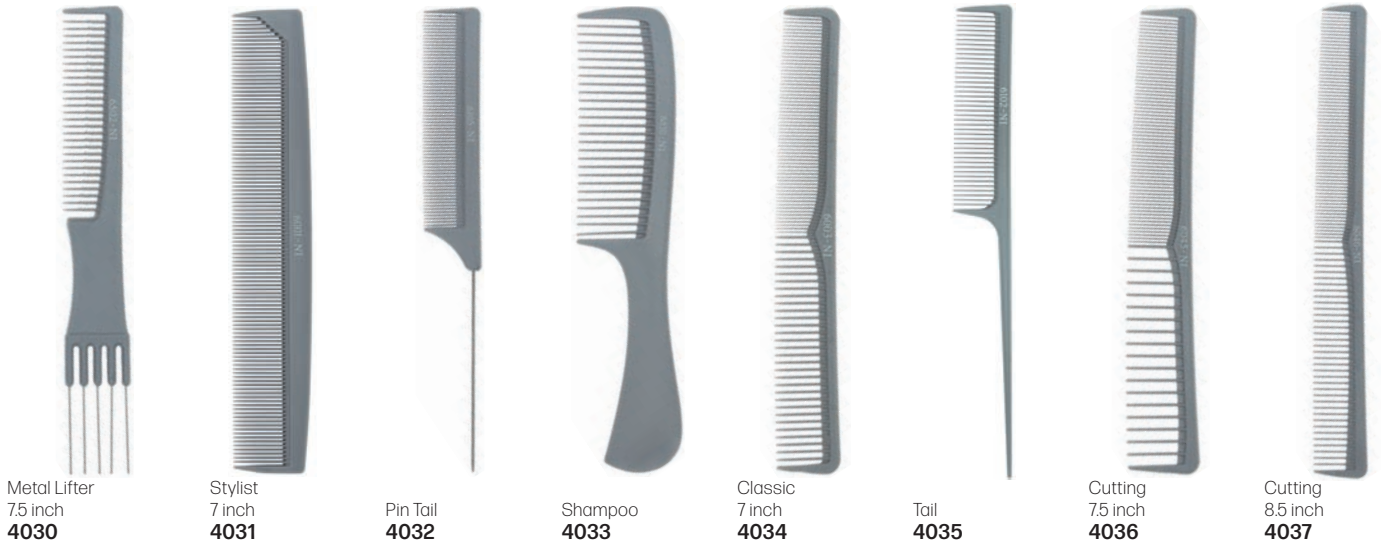
Teasing Tail  
4027

Tail  
4028

Wide Teeth Cutting  
4029

**NANO IONIC**

Anti-static, with flexibility. Help hair retain moisture & shine, seamless surface inhibiting bacterial growth.



Metal Lifter  
7.5 inch  
**4030**

Stylist  
7 inch  
**4031**

Pin Tail  
**4032**

Shampoo  
**4033**

Classic  
7 inch  
**4034**

Tail  
**4035**

Cutting  
7.5 inch  
**4036**

Cutting  
8.5 inch  
**4037**

**GOLDILOCKS**

**GOLDILOCKS®**

Created for high-quality combing action for intricate hairstyles. Professional, durable comb for long-lasting use with high performance.



#16 Long  
8.5 inch  
**1642**

#17 Styling  
7 inch  
**1643**

#20 Cutting  
7 inch  
**1644**

#25 Even Teeth  
7 inch  
**1645**

#30 Large,  
Even/Fine  
7 inch  
**1646**

#4 Cutting  
7 inch  
**1647**

#5 Tail, Fine  
**1648**

#50 Barber  
**1649**

#56 Pintail  
**1650**

#8 Fork Teaser  
7.75 inch  
**1651**

**COMAIR - Durable with uncompromising quality.**

**COMAIR**  
GERMANY | SALON-ACCESSORIES



#401  
**1125**

#105  
**1127**

#349  
**1128**

#MK II  
**1129**

#501  
**1130**

#610  
**1131**

#500  
**1132**

#201  
**1134**

#202  
**1135**

#3111  
**2616**

**PIVOT COMBS**



Cutting  
7 inch  
**2375**

Ladies  
9 inch  
**4283**

**HAIRPRO**




Tail  
21.5 x 5cm  
**15348**

Pin Tail  
22.5 x 2.5cm  
**15349**

Cutting, Long  
22 x 3cm  
**15351**

Cutting, X-Long  
23.5 x 3cm  
**15352**

**ALUMINIUM COMBS**



Aluminium  
18cm  
**15335**

Aluminium  
21.5cm  
**15336**

**CARBON COMBS**



Carbon Heat Resistant Tail Comb, Black  
**13978**

**MEN'S COMBS**



130 x 28mm  
**12168**


154 x 27mm  
**12169**

The Beard Pro Beard comb that shapes your neck & cheek line in just minutes for the ideal beard shape.  
**12253**



**JORGEN HEAT-RESISTANT COMBS**

Features blended polymers which have a heat resistance of up to 200°C, making it perfect to be used with hot tools.



Tail, Metal  
**11058**

Tail  
**11059**

Cutting  
7 inch  
**11060**

Cutting  
8.5 inch  
**11063**

**STRAIGHTENING COMBS**



Straightening Tension Comb, Black  
**12105**

Carbon Fiber Flat Iron Comb  
**18722**



Ionic combs made of high-quality plastic. Ions help the hair to absorb moisture & give it a healthy, cared-for shine. Anti-static, heat-resistant & anti-bacterial.



Cutting Comb 7.25 inch <b>6483</b>	Barber Comb 7.25 inch <b>6484</b>	Cutting Comb 8.5 inch <b>6485</b>	Handle Comb 8 inch <b>6486</b>	Cutting Comb 6.75 inch <b>6487</b>	Cutting Comb 7.25 inch <b>6488</b>	Tail Comb 8.25 inch <b>6489</b>	Pin Tail Comb 8.75 inch <b>6490</b>	Fork Comb 7.5 inch <b>6491</b>
--	---	---	--------------------------------------	--	--	---------------------------------------	---	--------------------------------------

JAGUAR A-LINE IONIC 9 COMB SETS - With rounded teeth to protect hair & scalp. Anti-static, heat-resistant & anti-bacterial.

Teal  
**20222**



Lavender  
**18638**



Purple  
**4362**



**NEW**

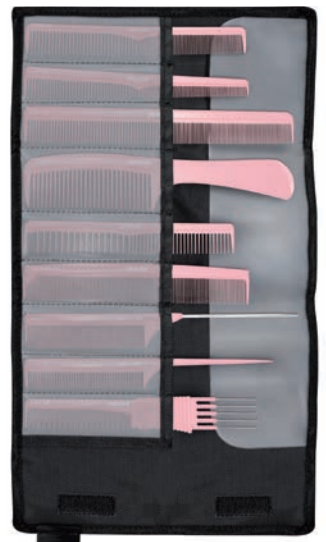
Black  
**4266**



Pink  
**6389**



Rosé  
**15671**



**OLIVIA GARDEN HEALTHY HAIR® BAMBOO COMBS**



Combs made from 100% bamboo. Not only is bamboo strong, lightweight & durable, it is 100% sustainable.

Curved Handle  
**11143**

Straight Handle  
**11142**



The Comb Cleaner™ by Olivia Garde  
Removes unwanted residue & build-up from any comb  
in seconds.

Set of 6  
**3843**



**OLIVIA GARDEN CARBOSILK® HEAT RESISTANT COMBS**



Very rigid combs that glide smoothly through the hair & release negative ions for a sleeker & shinier cuticle. Lightweight, anti-static, unbreakable, heat-resistant to 230°C.



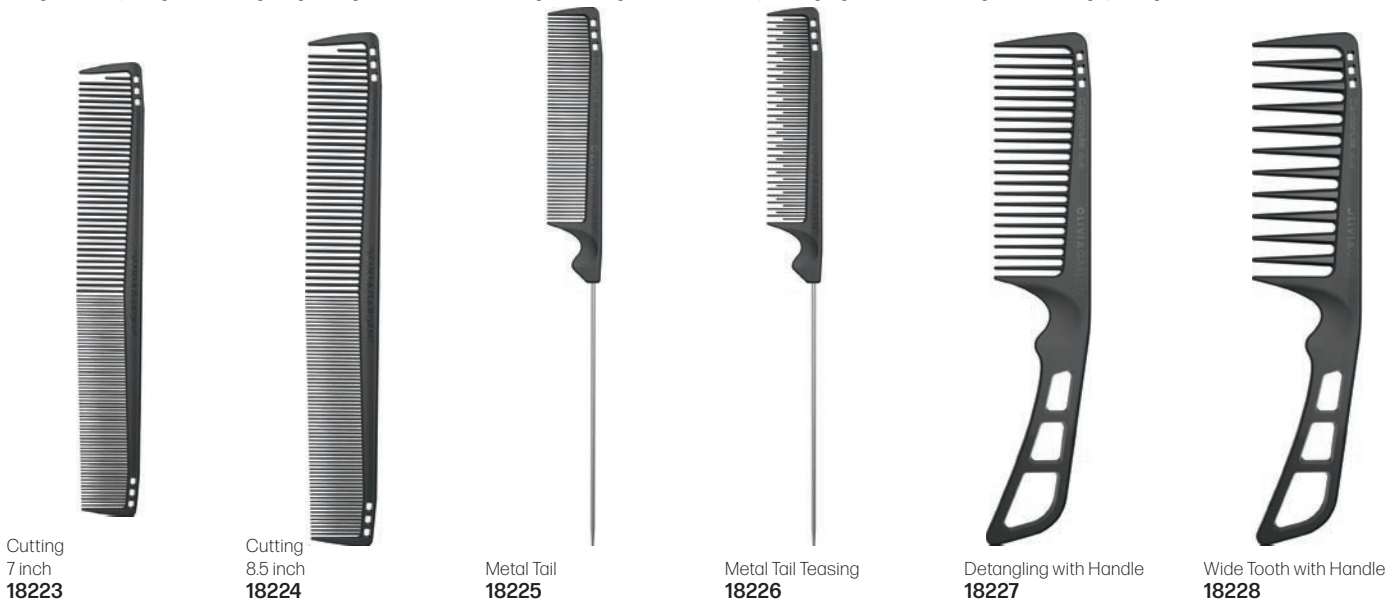
Set of 6  
Includes:  
- Barber  
- Cutting  
- Cutting Long  
- Cutting Large  
- Cutting Longer  
- Afro  
**7844**



**OLIVIA GARDEN CARBONLITE™ - High quality carbon combs engineered for epic performance**



• High quality carbon • Strong & durable material resists breakage • Heat resistance up to 230°C • Anti-static • Chemical-proof & stain-proof • Ultra-light • Smooth body & seamless teeth design • Entirely snag-free when gliding through hair • Rounded teeth glide through the hair for easy detangling & no hair breakage • Patented grip design



Carbon Combs  
Resistant to heat & chemicals.  
Rat Tail  
8 inch  
**18667**



Cutting  
8.5 inch  
**18668**



Pin Tail  
8.5 inch  
**18669**



Curved Barber Clipper Comb  
For cutting flat tops, fades & short styles.  
**18649**



Assorted Comb Set, 6 Pack  
Multi-use comb set for all hair types. Variety of designs & sizes for all styling situations.  
**18303**



Black/Bone Thick Rat Tail  
9 inch  
**16592**



Steel Fan Pick Comb  
With coated tips. Add ultimate volume & lift.  
7.5 inch  
**16593**



Extra Long Pin Tail  
Ideal for use with foils to separate & section.  
9.375 inch  
**16594**



Cutting  
7 inch  
**9673**



Flat-Top Clipper, Black  
9.5 inch  
**5604**



10 Piece Bone Comb Set with Pouch  
**4725**



Large Rake Comb  
Black  
**5607**



Fan Pick Comb with Metal Pins,  
Black  
**12412**



XL Steel Lift Comb with Metal Pins,  
Black  
**12413**



3-in-1 Lice Tool  
Lice comb, brush & magnifying glass. Comb removes lice & nits. Use brush to ensure comb teeth are clean.  
**11501**



**EPIC CARBONITE COMBS**

Made from carbonite material - ultra-lightweight & super-strong. Heat-proof, ideal for use with hot tools. Ideal for creating long-lasting styles.



Dresser  
14337



Dresser with Hook  
14341



Dresser, Wide Tooth  
14342

**THE WET COMB 2**

Precision styling - the perfect degree of firmness for optimal performance. High heat & chemical-resistance. Designed to withstand heat up to 240°C. Works great on wet or dry hair. Anti-static, smooth finishing, ultra-lightweight.



Black  
10578



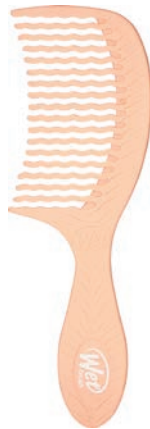
Red  
10582

**WETBRUSH GO GREEN™ TREATMENT & COMB**

Eco-friendly combs for those who prefer detangling with a comb. Teeth are infused with natural oil & mineral treatments for specific hair needs. Made from biodegradable & sustainable plant-based bioplastic derived from corn starch. Oils & minerals are distributed during combing, delivering a rich supply of nutrients to treat, moisturize & repair the hair. Pick the treatment for the specific hair need. WaveTooth™ delivers pain-free detangling.



Tea Tree Oil - Improves scalp health  
17086



Coconut Oil - Moisturizes for soft, smooth hair  
17087



Charcoal - Purifies & detoxes hair  
17088

**THE WET COMB**

WaveTooth™ technology distributes hair evenly across teeth to prevent clumping, snagging & breakage. Works great on wet or dry hair.

Black  
9475

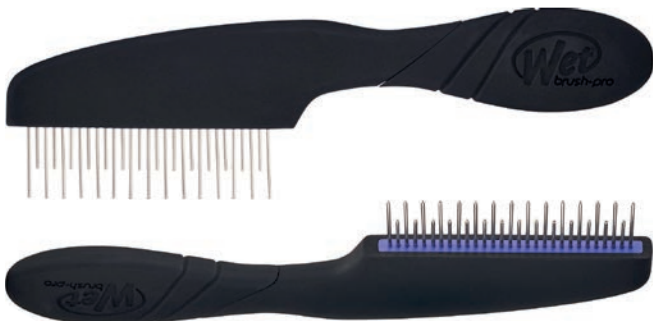


**ROTATING COMB FOR CURLY HAIR**

Self-adjusting comb to detangle dense, coarse hair types. Safe for use with treatments. Unique rotating tooth comb features teeth that rotate for easy detangling on the tightest of curls. Varied teeth lengths detangle even the coarsest of hair with little effort.

Longer teeth get closer to the roots, with shorter bristles detangling hair further down the shaft. Teeth rotate 360° to reduce hair tugging, gliding through any troublesome tangle. Rounded teeth will not snag or pull coarse hair.

17208



**PRO DETANGLING COMB**

WaveTooth™ design prevents clumping & effortlessly glides through tangles. EasyGrip™ handle provides secure grip even with wet hands.



Black  
15868



Pink  
15869



Purple  
15870

**TRIPLE EDGE STYLER FOR EDGES**

Multi-functional edge brush for keeping the hairline & fly-aways in place for natural, relaxed & braided styles. Creates detail & definition. Nylon bristles minimize damage & snagging while styling.

Two-sided for different hair thicknesses: wide tooth side detangles, & fine tooth side for fly-away strands. Sectioning pick at end of styler for added ease. Innovative toothbrush design allows for detailed styling with minimal effort.

**17210**



**WIDE TOOTH DETANGLING COMB FOR CURLY HAIR**

Oversized wide tooth comb for gentle detangling, ideal for any hair length or texture. Safe for use with treatments. Smooth, non-scratching teeth reach right to the scalp & gently detangle hair without damage or shedding.

Elongated teeth get closer to the roots. Wide spaced teeth detangle even dense curls. Teeth are chemical & heat resistant.

**17212**



**SHAMPOO COMBS**

Shampoo Combs  
36 pieces  
**8890**



Detangling Combs  
36 pieces  
**8891**



Double-Sided Teasing Comb  
Assorted Colors  
**11432**



Teasing Comb, Assorted Colors  
24 pieces  
**11161**



**STARFLITE - Anti-static, flexible & durable.**

**KREST**



ASSORTED COMBS

<p>Highlight &amp; Coloring Comb, Black 2215</p> 	<p>Wet Comb, Double-Dipped 1400</p> 	<p>Lice Comb, Assorted Colors 2047</p> 	<p>Level Cutting Comb for Angled Cutting, 205mm, Black 8889</p> 	<p>Large Detangler, Double-Dipped, Black 1405</p> 	
<p>Double Row 1137</p> 	<p>Large Rake Comb, Black 1138</p> 	<p>Flattopper Comb with Bubble Leveler, Black 11233</p> 	<p>Convex Comb for Clipper Cutting, Black 3084</p> 	<p>2 Part Highlighting Comb 4372</p> 	
<p>Mini Vent On Keyring Assorted Colors 2732</p> 	<p>Color Line Mesh Comb 3690</p> 	<p>Volume Double-Dipped Comb, Black 1410</p> 	<p>Jumbo Basin Comb 1140</p> 	<p>3-in-1 Styler Comb, Black 2730</p> 	<p>Afro Comb, Black 1136</p> 
<p>Mini Comb, Assorted Colors 1139</p> 	<p>Double-Sided Balayage Triangle Comb One side features traditional tail comb teeth. Other side has ascending &amp; descending teeth lengths to form triangle shape. Teeth have special tips, ideal for balayage. 18314</p> 	<p>Professional Highlighting Combs, 3 Pack Three tail combs specially designed for all shapes &amp; sizes of highlighting. Ideal for babylights, normal highlights &amp; chunky highlights. Fine, medium &amp; wide teeth combs in single pack. 18332</p> 			

**ASSORTED COMB SETS**

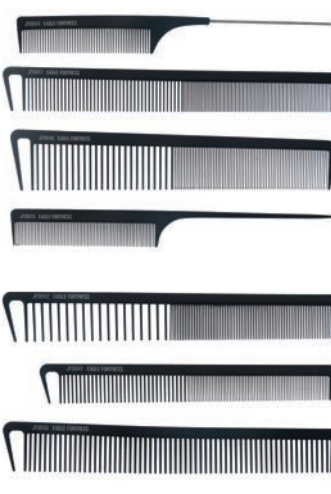
9 Piece Ionic Comb Set with Pouch  
**4987**



9 Piece Carbon Comb Set  
**6320**



7 Piece Carbon Comb Set with Pouch  
**7824**



9 Piece Comb Set With Pouch, Black  
**1141**



9 Piece Comb Set, Black with Black Pouch  
**15346**



ProTip 5 Piece Comb Tool Wallet  
**7370**



ProTip 6 Piece College Kit, Blue  
**7368**



Candy 7 Piece Sets  
Green **10657**  
Purple **10658**



5 Piece Carbon Comb Set with Pouch  
Made entirely of carbon. Strong, light & resilient to temperature & chemicals.  
**18513**



4 Piece Carbon Barber Comb Set  
Made entirely of carbon. Strong, light & resilient to temperature & chemicals.  
**18514**

