

YOUR QUESTIONS ANSWERED

How do I use the new Crazy Color Toner?

These Rapid Toners are best used on hair that has been pre-lightened to Level 8-10. Follow the instructions on the box to ensure you get the best results. Make sure you have shampooed and fully rinsed out all of the bleach prior to applying the toner. Any residue left in the hair may compromise your colour results.

Can I mix shades of Rapid Toners together?

Absolutely! These toners are intermixable so you can create your own custom shade. They also make a great base for Crazy Color Semi Permanent shades to be used on top and create new shade options.

Do you mix the Toners with a Developer?

Yes, we recommend using Crazy Color Volume 6 Developer, but you can also use Volume 10.

What is the mixing ratio for the Rapid Toners?

1:2 Toner to Developer. To minimise colour deposit for a softer colour result, change the mixing ratio 1:3 or 1:4.

ALSO IN THE COLLECTION:

High Lift Violet Lightener Ultraviolet Bleaching Powder with Anti-Breakage Complex

A powerful, dust-free bleach delivering up to 9+ levels of lift. This ultraviolet formula helps remove unwanted yellow tones for the cleanest results, whilst conditioning and supporting the hair with added bond protect anti-breakage complex, with Safflower Seed Oil and Glycine Amino Acid.

Cream Developer Available in Volumes 6, 20 + 30

Created to optimise colour and bleaching powder performance with high performing peroxide. These moisturising formulas lock in colour for saturated results with shine.



What is the processing time?

With these Rapid Toners, you will see results in 5 minutes or less. Toners can be left on the hair for up to 20 minutes for more intensely pigmented results.

When should Rapid Toners be used?

They should be applied to hair that has been bleached to a level 8-10. They can be used to balance out unwanted yellow or warm tones or to create unique shades of colour.

Should I apply these Toners to dry or damp hair?

They can be applied to either dry or damp hair.

How long do these toners last?

These toners can last up to 8 washes.

Can the Rapid Toners be mixed with Crazy Color Semi Permanent shades?

No, application of the toners and any other oxidative processes should be completed before applying Crazy Color Semi Permanent colours.

CRAZY[®]

COLOR

RAPID TONER CHEAT SHEET

Created for Professionals Intensely Nourishing Toner

Formulated to create tonal results on blonde shades in just 5 minutes whilst moisturising and maintaining the health of the hair.



Gluten Free



Vegan &
Cruelty Free

Made in the UK

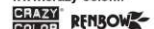


Raccolta differenziale - Consultare le
disposizioni di smaltimento del tuo Comune



Professional Beauty Systems Ltd P42 BRE (UK)
P421 L261 Ltd, 10 Canalside Terrace, Dublin 2 Ireland

pro.crazycolor.co.uk
www.crazycolorus.com
www.crazy-color.fr



Crazy Color Rainbow and all logos are
trademarks of Rainbow Haircare Ltd. 2024

Scan me for more
info + education:



CRAZY COLOR®

RAPID TONERS



01 CANDY PINK

(Pink Base)
Creates a soft, baby pink shade. This works well on its own or as a pre-tone before applying semi-permanent colour for added longevity.



02 PEACH SORBET

(Orange/Golden Base)
Creates a soft, pastel hue with undertones of orange, yellow and pink.



03 TOFFEE POP

(Warm Base)
The perfect rich, caramel blonde tone with balanced warm and cool tones.



04 LAVENDER DAZE

(Violet Base)
Creates a warm pastel purple tone which progressively deepens after 5 minutes to a rich purple.



05 ICE QUEEN

(Cool Blue Base)
Gives cool silver results that perfectly tones pre-lightened hair to an icy blonde. Leave on longer for an intense silver grey shade.



06 PLATINUM PUNK

(Violet Base)
A classic cool metallic with a hint of violet that tones blonde hair, neutralising any unwanted yellow brassy tones. Deepens into a more intense violet tone after 5 minutes.



07 AQUAMARINE RIOT

(Green Base)
Creates a bright turquoise shade with a green undertone. A balanced, fresh, zingy aqua.



08 BLAZING COPPER

(Warm Orange Base)
Delivers a punch of deep copper tones after just 5 minutes. Leave on for 20 minutes to increase the intensity!

LEVEL 8



LEVEL 10



SWATCH NOTES

Top Swatch
Level 8 / 5 and 20 mins
Bottom Swatch
Level 10 / 5 and 20 mins

HOW TO USE

Mix toner with developer in 1:2 ratio using Crazy Color Cream Developer 6Volume. Apply to damp or dry hair.

Works in 5 minutes or can be left for up to 20 for a deeper pigmented result.

To minimise colour deposit, change the mixing ratio to 1:3 or 1:4. Shampoo and rinse thoroughly after the development time.

PRO TIPS

Remember to use non metallic tools!

All toner shades are intermixable so you can create your own unique shade.

Mix with our Crazy Color Cream Developer 6Volume or a 10Volume Developer.

Check out our socials for more inspiration!

Tag us in your final looks for a chance to be featured on our socials!

Scan here for more info and education!



KEY INGREDIENTS

Our creamy formula contains ingredients which have been selected to help moisturise, nourish and protect the hair while adding shine for healthy, hydrated results!



SHEA BUTTER

Is full of fatty acids and vitamins which help to repair damaged hair while moisturising and strengthening the hair.



OLEIC ACID

Helps to seal moisture into the hair by creating a protective layer.



GRAPESEED OIL

Helps to seal moisture, reduce frizz and add shine to the hair.



SUNFLOWER OIL

Helps to nourish the hair and add shine.



GLYCERINE

Draws moisture to the hair, adding lustre and shine.