

Hairdressing Bulk Products & Chemicals

KAYPRO

PROFESSIONAL HAIR CARE

WELLA
PROFESSIONALS

PRAVANA

BIG
PROFESSIONAL

Salon Fuels

Beauty **PRO**

S

SALON
SPECIFICS

Truzone

tint me



osmo|kan
PERMANENT HAIR COLOUR

VINES
vintage

<p>Shampoo Peach Sorbet 1 Litre 11390</p>	<p>Shampoo Tangerine 1 Litre 11391</p>	<p>Shampoo Coconut Oil 1 Litre 5162</p>	<p>Shampoo Lemon & Lime 1 Litre 5161</p>	<p>Shampoo Tea Tree 1 Litre 8061</p>	<p>Conditioner Herbal Complex 1 Litre 5163</p>	<p>Hair Aid Conditioner 5 Litre 5168</p>	<p>Herbal Anti-Oxy Conditioner 5 Litre 5993</p>	<p>Almond Oil & Henna Treatment Mask 1 Litre 5165 5 Litre 11389</p>
---	--	---	--	--	--	--	---	---

<p>Shampoo 5 Litre Almond Oil 5158 Coconut 5157 Lemon & Lime 5155</p>	<p>Peach Sorbet 5156 Rhubarb Sorbet 5160 Tangerine 5159</p>	<p>Herbal Complex 5991 Fresh Apple 5992 Tea Tree 8060</p>	<p>Cream Peroxides 1 Litre 10 volume 5151 20 volume 5152</p>	<p>30 volume 5153 40 volume 5154</p>

<p>Styling Gels Wet Look Gel 1000ml 5171</p>	<p>Firm Hold Gel 1000ml 5170</p>
--	----------------------------------

<p>Super Gel Spray 250ml 5164</p>

<p>Truzone Argan Oil 100ml 11394</p>

OPTIONS ESSENCE

<p>Options Essence Sea Extract & Henna Mask 1 Litre 11395</p>	<p>Options Sea Essence Shampoo pH balancing 5 Litre 11396</p>	<p>Tropical Essence Shampoo pH balancing 5 Litre 11397</p>
---	---	--

<p>Trucare Setting Lotion 1 Litre Normal 11392 Extra Hold 11393</p>

<p>Perm Lotion 1 Litre Trucurl herbal wave & 1 Litre neutraliser twin pack 5169</p>

X-10 HAIR EXTENSION AFTER CARE

Specially formulated for hair extensions.

<p>Care shampoo, 250ml 5026</p>	<p>Care conditioner, 250ml 5027</p>	<p>Leave-in treatment, 250ml 5028</p>	<p>Leave-in shine spray, 125ml 5029</p>
---------------------------------	-------------------------------------	---------------------------------------	---

Hair Extension Kit Contains 1 of each, pink bag 5030

<p>Barrier Cream 425ml 8046</p>

SHAMPOO

- 1 Litre Anti-Frizz **12034**
- Black Shampoo - (grey coloring shampoo) **16130**
- Blueberry **10682**
- Clarifying (vanilla) **7096**
- Men's Shampoo **12100**
- Papaya **10681**
- Protein Sulphate-Free **10690**
- Silver Sulphate-Free **10688**
- Strawberry **10680**
- Sulphate-Free **10689**
- Silver **16432** NEW



- 5 Litre Anti-Frizz **12035**
- Black Shampoo - (Grey coloring shampoo) **16131**
- Blueberry **10686**
- Clarifying **12506**
- Clear Shampoo **12096**
- Coco Butter **12098**
- Colour Care **12097**
- Dry & Damaged **12110**
- Herbal **1034**
- Honeysuckle **2854**
- Men's Shampoo **12101**
- Pearlised **2117**
- Pearly White Honeysuckle **9438**
- Protein **4448**
- Protein Sulphate-Free **10693**
- Silver **5511**
- Silver Sulphate-Free **10691**
- Strawberry **2116**
- Sulphate-Free **10692**
- White Pearl **16694** NEW
- Honey & Rooibos **16689** NEW



- 25 Litre Blueberry **13856**
- Herbal **4835**
- Pearly Honeysuckle **9439**
- Strawberry **13857**



CONDITIONER

- 1 Litre Anti-Frizz **12036**
- Blueberry **10685**
- Men's Conditioner **12125**
- Papaya **10684**
- Strawberry **10683**
- Silver **16431** NEW



- 5 Litre Anti-Frizz **12037**
- Biological Treatment **4450**
- Blueberry **10687**
- Coco Butter **12102**
- Dry & Damaged **12085**
- Herbal **1032**
- Honeysuckle **2855**
- Men's Conditioner **12126**
- Pearlised **2118**
- Pearly White Honeysuckle **9440**
- Protein **4449**
- Strawberry **11722**
- White Pearl **16695** NEW
- Silver **16430** NEW
- Honey & Rooibos **16690** NEW



- 25 Litre Blueberry **13855**
- Pearly Honeysuckle **9441**
- Strawberry **13854**



CREAM PEROXIDE

- 1 Litre **12081**
- 5 vol **1018**
- 10 vol **1019**
- 20 vol **1020**
- 30 vol **1021**
- 40 vol **1021**

TIP: 100ml peroxide weighs 92g



PERM LOTION SOLUTION

- 1 Litre Tinted **1036**
- Gentle Wave **1037**
- Resistant **1038**
- Protein **5658**



GLAZE

- Super Hold 5 Litre **12127**



TONIC

Gents Bay Rum Tonic
Stimulating tonic that refreshes & revitalizes the hair & scalp. Infused with fenugreek for a soft & soothing fragrance. Massage to stimulate blood circulation. Use after a cut to finish off the session by stimulating the hair follicles.

- 5 Litre **16688** NEW!



LAQUER

- 1 Litre Pink (normal) **2197**
- Yellow (strong) **2198**



- 5 Litre Pink (normal) **1029**
- Yellow (strong) **1030**



SETTING LOTION

- 1 Litre Normal **1048**



MASQUE

Melanoid Black Hair Masque
Nourishing black masque that adds depth of color to grey & light hair color.

Enhances natural greys & silvers. Ideal for men with greying hair to add some dark grey tones & a richer tone.

- 500g **16691** NEW!



SETTING GELS

500g
 Mega hold, clear **1044**
 Medium hold, pink **1046**
 Strong hold, clear **2179**
 Mega hold, blue **3917**

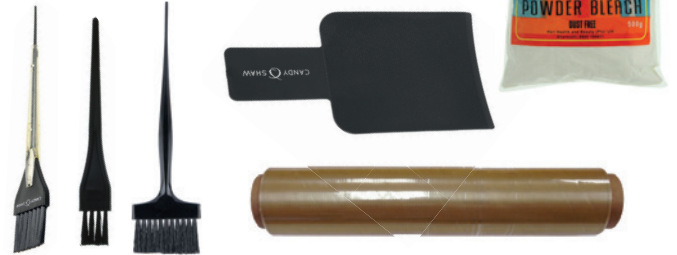


5kg
 Medium Hold Pink **1047**
 Mega Hold Clear **4834**
 Mega Hold Blue **5932**
 Strong Hold Clear **16692**



BALAYAGE KITS

Contains:
 - Balayage Bleach 13631
 - Balayage Film 13712
 - Paddle 12263
 - Tint Brushes 12260, 12258 & 18123
P872



TINT REMOVERS

Salon Fuels Tint Remover No Rub Wipes
 Our BEST SELLER. Removes hair dye from hairline.
 100 wipes
3151



Dy-Zoff Lotion
 355ml
5264



Dy-Zoff tint remover,
 pre-saturated pads
 80 pieces
4631



NAIL POLISH REMOVERS

With Acetone
 1 Litre **1659**
 5 Litre **4291**



NEUTRALIZER

Foam
 1 Litre **5656**
 5 Litre **1028**



Cream
 1 Litre
5657



DISTILLED WATER

5 Litre
2455



PLACENTA

5 Litre
4447



SILICONE

1 Litre
3009



MOUSSE

Natural, 325ml **2120**
 Natural, 150ml **2119**
 Silver, 150ml **2185**
 Mahogany, 150ml **2186**



BeautyPRO LIQUID SOAP

Dilutable - a little goes a long way
 5 Litre



White Apricot & Almond
12400

Anti-Bac Avocado,
 Cucumber & Tea Tree
12448



BeautyPRO WAXING WIPES



Pre-Wax Wipes
 Don't be bothered with messy liquids, just wipe.
 Super-soft, pre-moistened wipes. Cleans, moisturizes & prepares skin for waxing.
 85 wipes
4596



Postwax Wipes
 Removes excess wax from skin, refreshing & soothing, suitable for oily or water-based wax.
 85 wipes
4595



BeautyPro PINK GRAPEFRUIT & POMEGRANATE

High in antioxidants & anti-inflammatory properties.

Exfoliating Foot Scrub
Foot scrub with pleasant fragrance & feel.
1kg
13844



Foot Soak Fizz Granules
Anti-bacterial & hygienic formula.
2kg
13843



Massage Cream
Luxurious formula with lasting fragrance.
500g
13845



Foot Soak
Stimulating & invigorating formula.
2 Litre
13846



DECOLORIZATION - We stock a wide variety of bleach to cater for individual preferences by brand & function.

SALON FUELS POWDER BLEACH - Our house brand, economical, great performance & fragrance.



Hi-Lift
Lifts 5-6 levels, dust-free.
Violet
500g
4573



Bleach Powder
Conditioning bleach, lifts 4-5 levels, dust-free.
500g
Blue
1456
White
1457



Colored Bleach Powder
Pink
250g
11570



Balayage Clay Bleach
Dust-free, white
500g
13631



OSMO IKON



Power Lift Bleach
500g



Blue
8151



White
8152

Hi Lift Plex-Bleach, Violet
This bleach feels slightly grainy on mixing, but applies easily & smoothly. Contains an in-built Plex so no need to add anything to your mixture. Give all clients the protection they deserve. Lifts up to 7-9 levels with heat.
500g
14637



Premium Violet Lightening Powder with Bond Builder
Delivers 9+ levels of lift. Delivers super-clean results. Bond Builder provides faster results & better hair condition. Leaves hair soft, silky & detangled. Bond Builder keeps the hair's bonds intact during bleaching, meaning you can use a lower developer. Clients' hair is kept conditioned & detangled with minimal breakage. Violet pigments neutralise brassy tones, giving you more control & gorgeous results. Ideal for use both on & off the scalp. 100% vegan friendly & dust-free formula.

How to use: use on its own either on or off the scalp, or combine with Freehand Clay Additive for balayage & all open air techniques. Tip: combine powder with a Colour Additive & Osmo Ikon Developer for an extra boost of color & to neutralise unwanted undertones.
500g
16350



Freehand Clay Additive with Kaolin Clay
A thickening clay for freehand blonding & all other open air lightening techniques. Features mineral kaolin clay that thickens the Violet Lightening Powder. No need for foils, meché or film - just the freedom & creativity to brush in blonde.

Kaolin enables the hair to remain encapsulated & wet throughout the lightening process. Prevents the bleach from swelling - so no bleach or color bleed, or seepage, & the product will not dry out or flake. The perfect lightener for all balayage enthusiasts. When mixed with Violet Lightening Powder, the mixture delivers amazing 9+ levels of lift.
200g
16351



DECOLORIZATION - We stock a wide variety of bleach to cater for individual preferences by brand & function.

SUPERPLEX

[SUPERPLEX]

PRAVANA

PRAVANA

Supplex Powder Bleach
Up to 7, white
400g
13543

30g sachet
- TRY ME!
13544



Supplex up-to-9 Blue Hi Lifting Powder
Lifts up to 9 tones with an accelerated, gradual, constant lightening action. Contains anti-breakage complex & guarantees uniform lightening. Dust-free.
400g
14431



Pure Light Balayage Lightener
Created specifically for balayage & foil-free lightening with up to 5 levels of gentle lift. Three Pure Light Balayage Activators are available in Low, Medium or High for the most effective balayage consistency.
1 part Pure Light Balayage Lightener:
2 parts Pure Light Balayage Activator
453g
13087



Pure Light Creme Lightener
90ml
13287



BIG PROFESSIONAL

BIG PROFESSIONAL

KAYPRO - MADE IN ITALY

KAYPRO
PROFESSIONAL HAIR CARE

Super Sonic Bond Bleach 1+2
Powder lightener that lifts 8/9 levels. Outstanding protective properties. This FOS BOND BUILDING BLEACH leaves hair very soft & the hair structure intact. Remains supple & elastic even after total lightening. Low ammonia, MEA-free formulation does not swell or expand preventing overlap.
2.5 kg
14613



Big Cream Bleach 1+1
De-Coloration Conditioning Cream Lightener. Lifts up to 6 levels.
2.5 kg
13759



Big Blue Bleach 1+2 Dust Free Powder
Rapid bleaching action that lifts up to 7 levels.
5 kg
13758



Active Carbon Anti Yellow Bleaching Cream
Black bleaching cream that lightens up to 9-10 levels, creating natural, cool or ashy blondes in one step. Can be used for all bleaching techniques. Does not drop or swell. Mixing ratio of 1:2 (30 grams of bleaching cream + 60ml of oxidizing emulsion 10/20/30/40 volume).
250g
17715



WELLA



CDC



Blondor Freights Powder
Ideal for Balayage.
400g
12969



Wella Blondor Multi-Blonde Powder
400g
7411



Bleach Powder, Dust Free
500g



White
3375



Blue
3376

tint me



Professional Cream Peroxide
1 Litre



5 Volume (1.5%)
18027



10 Volume (3%)
18028



20 Volume (6%)
18029



30 Volume (9%)
18030



40 Volume (12%)
18031