

# Hair Extensions & Wigs

hairdo.

MANIC  
PANIC

YOSHE



100% virgin Remy human hair, each strand individually hand-threaded in order to maintain the hair's natural cuticle direction. Remains tangle-free & looks undeniably natural & vibrant over time.

**Clip Highlight, 2 Pieces** - Creating highlights is just a clip away! Add an accent to your color. 100% real hair, 24cm length



**Flip It Extensions, 35cm**  
100% human hair. Create volume with zero damage - the latest hair extension trend. Takes less than 1 minute to fit & 1 second to remove. Attaches to your head by a thin wire that is hidden by your hair.



**Clip It Bang!**  
The allure of color ..... Creating a new style is just a clip away! Non-committal, safe & non-damaging, comfortable, fast to apply & remove, no tools required. 19cm length



**Hair Extension 4-in-1 Caddy**  
Helps you wash, style, pack & store any extensions more quickly & efficiently. Holds extensions in place to free both hands to dry & style.

1. Attach caddy to smooth, hard surface with suction cups (recommended at area where extensions are shampooed & rinsed to prevent mess).
2. Insert extensions & close top so you can wash, color, blow-dry & style. Clips in caddy prevent hair from slipping out.
3. Wrap extensions around caddy & place in travel bag for safe, easy travel or use included clips in caddy to hang extensions in dry area when not in use to keep them safe.

14260



**NEW!**

Colored wigs using the techniques & styles that epitomize Manic Panic. A wide variety of wig styles for those wanting to change up their look with vivid color in varying lengths. All wig pieces are synthetic, vegan & can be styled using heat.

TISH & SMOOKY'S  
**MANIC PANIC**® N.Y.C.

- Compatible with heat styling tools with heat resistance up to 120°C
- Hand washable material for keeping wig clean & fresh
- Fully adjustable wig cap for secure fit, realistic look & feel
- Professional quality synthetic wig
- Can be trimmed to create unique shape & style
- Cruelty-free & vegan



crueltyfree  
andvegan



**Downtown Diva™ Wig - Raven™ Virgin™**  
Long & straight heat styleable wig with bangs in a stark Raven™ black & snowy Virgin™ white split dye style. This gothic mix is perfect for those who live in the light & love in the dark.  
17457



**Siren™ Wig - Psychedelic Sunrise™**  
Long heat styleable wig with wavy curls & bangs in a warm & sunny red-orange & yellow ombre style - rise & shine with this beautiful blend of Electric Lava™ into Psychedelic Sunset™ & Sunshine™.  
17458



**Siren™ Wig - Cotton Candy Angel™**  
Long heat styleable wig with wavy curls & bangs in a yummy pastel pink & blue split dye style - candy-coated on each side in Pastel-ized™ Cotton Candy™ Pink & Blue Angel® Creamtone®.  
17459



**Siren™ Wig - Mermaid™ Ombre**  
Long heat styleable wig with wavy curls & bangs in a cool sea blue-green turquoise ombre style - a perfect oceanic melt of Mermaid™ into Siren's Song™ & Sea Nymph™.  
17460



**Siren™ Wig - Fuchsia Passion™**  
Long heat styleable wig with wavy curls & bangs in a luscious purple-pink fuchsia ombre style - a delectable melt of Plum Passion™ into Fuchsia Shock™.  
17461



**Super Vixen™ Wig - Amethyst Ombre™**  
Long & straight heat styleable wig with side parting & dark root in a magical crystalline ombre blend of Electric Amethyst™ into Mystic Heather™.  
17462

NEW!



**Super Vixen™ Wig - Sea Nymph™**  
Long & straight heat styleable wig with side parting & dark root in minty fresh pastel green Sea Nymph™ Creamtone® color.  
**17463**



**Super Vixen™ Wig - Vampire's Kiss™**  
Long & straight heat styleable wig with side parting in deep Raven™ black with vibrant streaks as blood red as a Vampire's Kiss™.  
**17464**



**Queen Bitch™ Wig - After Midnight®**  
Long heat styleable wig with drop curls & side parting in a dark & glamorously mysterious Raven™ black to deep velvety After Midnight™ Blue ombre style.  
**17465**



**Queen Bitch™ Wig - Unicorn Dreams™**  
Long heat styleable wig with drop curls & side parting in a mystical unicorn rainbow of soft & creamy pastels, including Pastel-ized™ Cotton Candy™ Pink, Atomic Turquoise™, Sunshine™ & Velvet Violet™ Creamtone®.  
**17466**



**Trash Goddess™ Wig - Fleurs Du Mal®**  
Mid-length heat styleable wig with bangs in a pastel pink & purple ombre style - a petal-soft blend of Velvet Violet™ Creamtone® into Fleurs du Mal® Creamtone®.  
**17468**



**Trash Goddess™ Wig - Venus Envy™**  
Mid-length heat styleable wig with bangs in an electric green to neon yellow ombre style. Make everyone green with envy in this shocking blend of Venus Envy™ into Electric Banana®.  
**17469**



**Glam Doll™ Wig - Blue Valentine™**  
Heat styleable bob wig with bangs in a shockingly vibrant split dye style of Hot Hot™ Pink & Atomic Turquoise™ - two of the most popular & all-time classic shades.  
**17470**



**Glam Doll™ Wig - Alien Grey™ Ombre**  
Heat styleable bob wig with bangs in a stellar ombre blend of Raven™ black into out-of-this-world Alien Grey™.  
**17471**

Bangs today, gone tomorrow. Change your hair style as quickly & as easily as you change your mind. Synthetic Tru2Life® fiber can be heat-styled & cut to help you define your look. It is an exclusive fiber for the highest quality, most refined hairpieces. Blow dry, flat iron or curl it! **However, ensure you keep your iron temperature at 180°C or lower.** Perfect Match! Each color is a combo of 7 - 11 different shades to help you get the most natural look that blends with your own hair.

**Straight Extension Kit, 16 inch (40.6cm), 8 Pieces**

Solidify your glam gal clout with the ultimate in length & volume - straight up. This 8 piece Straight Extension Kit adds ahh-inducing length & luxurious volume in seconds. Use one or as many extensions as you want to dial up the drama.

Includes eight 40.6cm pieces in these widths: • One 7" (17.7cm) piece • One 6" (15.2cm) piece • Four 4" (10.1cm) pieces • Two 2½" (6.3cm) pieces



Ebony - R2  
15143



Midnight Brown - R4  
15144



Dark Chocolate - R6  
15142



Chocolate Copper - R6/30H  
15139



Chestnut - R10  
15137



Buttered Toast - R1416T  
15138



Honey Ginger - R14/25  
15141



Golden Wheat - R14/88H  
15140



Swedish Blonde - R22  
15145

**Simply Straight Pony, 18 inch (46cm)**

This strut-your-stuff pony delivers the style points straight up. This wrap-around piece instantly adds length, verve & volume to your pony. Easily put the Simply Straight Pony high, low or to the side. This hairpiece features a strip of hair that wraps around the holder & fastens with a hook-and-loop strip to conceal where the ponytail meets your own hair.



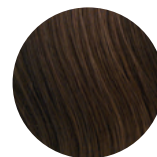
Ebony - R2  
15153



Midnight Brown - R4  
15149



Dark Chocolate - R6  
15152



Chocolate Copper - R6/30H  
15146



Chestnut - R10  
15151



Buttered Toast - R1416T  
15150



Honey Ginger - R14/25  
15148



Ginger Blonde - R25  
15154



Golden Wheat - R14/88H  
15147



Swedish Blonde - R22  
15155

**Fineline® Wavy Extension Kit, 22 inch (55.8cm), 4 Pieces**

Want some wave without the bulk? This 4 piece Fineline Extension Kit has the perfect amount of hair with the perfect wave. Fine hair is a thing of the past with extensions made just for that. These 4 pieces, with a seamless edge, are so light you'll forget you have them on. Tru2Life® heat-friendly synthetic hair lets you touch up the wave or change it up, anything is possible. With Fineline® construction, the hair is stitched to a thin layer of polyurethane, resulting in lighter, thinner, virtually undetectable pieces that lay flat to the head for a more comfortable, natural looking effect.

Includes four 55.8cm long pieces in these widths: • One 10" (25.4cm) piece • One 5½" (13.9cm) piece • Two 2" (5cm) pieces



Ebony - R2  
15157



Midnight Brown - R4  
15164



Dark Chocolate - R6  
15158



Chocolate Copper - R6/30H  
15160



Chestnut - R10  
15156



Buttered Toast - R1416T  
15159



Honey Ginger - R14/25  
15163



Ginger Blonde - R25  
15161



Golden Wheat - R14/88H  
15162



Swedish Blonde - R22  
15165

**Fineline® Straight Extension Kit, 22 inch (55.8cm), 4 Pieces**

Fine hair? No problem with the Fineline® Straight Extension Kit. This unbelievable construction gives you length & volume without the bulk. Achieve a smooth & seamless application that's light & incredibly comfortable. The 22" (55.8cm) length extends mid-back to add lovely length while the 4 piece construction adds va va volume.

Includes four 55.8cm pieces in these widths: • One 10" (17.7cm) piece • One 5" (12.7cm) piece • Two 2" (5cm) pieces



Ebony - R2  
15168



Midnight Brown - R4  
15174



Dark Chocolate - R6  
15167



Chocolate Copper - R6/30H  
15170



Chestnut - R10  
15166



Buttered Toast - R1416T  
15169



Honey Ginger - R14/25  
15173



Ginger Blonde - R25  
15171



Golden Wheat - R14/88H  
15172



Swedish Blonde - R22  
15175

**Straight Extension Kit, 22 inch (55.8cm)**

A fairy tale-worthy mane is a breeze with this straight, one-piece extension that gets short hair falling below the shoulder & long hair appearing thicker & more luxurious. One piece equals easy fashion change-ups in a snap via exclusive multi-level construction. Made with Tru2Life® heat-friendly synthetic hair that can be flat-ironed, curled or blown out.



Ebony - R2  
15180



Midnight Brown - R4  
15184



Dark Chocolate - R6  
15179



Chocolate Copper - R6/30H  
15178



Chestnut - R10  
15177



Buttered Toast - R1416T  
15176



Honey Ginger - R14/25  
15183



Ginger Blonde - R25  
15181



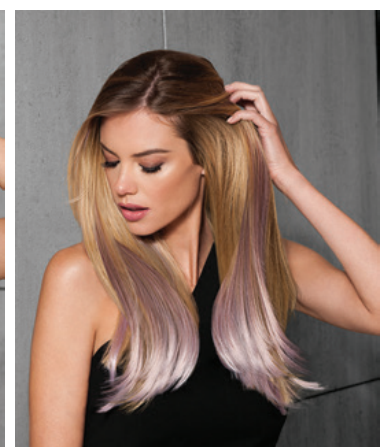
Golden Wheat - R14/88H  
15182



Swedish Blonde - R22  
15185

**Straight Color Extension Kit, 23 inch (30.4cm), 4 inch (10.1cm) wide, 6 Pieces**

Posh pastel or stunning steel add the ultimate hair enhancement! Soft metallic colors create the perfect amount of pop with the Color Extension Kit by Hairdo. These custom-colored 23" (30.4cm) long pieces will showcase your unique style & add length with fashion-forward color. Place the pieces around the top layer of your hair or create a different effect by customizing the placement. Includes six 4" (10.1cm) wide, 23" (30.4cm) long clip-in pieces.



Berry Sorbet  
15186



Chrome Mist  
15187



Iced Violet  
15188



Pink Frost  
15189



Stormy Blue  
15190

**Grand Extension, 23 inch (30.4cm)**

If hair extensions had a smarter, wiser, older sister, the 23" (30.4cm) Grand Extension would be it! A three-quarter-cap of luscious hair with five strategically placed pressure-sensitive clips for a secure hold. Soft, natural-looking waves add head-turning volume & movement.



Ebony - R2  
15196



Midnight Brown - R4  
15197



Dark Chocolate - R6  
15195



Chocolate Copper - R6/30H  
15194



Chestnut - R10  
15193



Buttered Toast - R1416T  
15191



Golden Wheat - R14/88H  
15192

**Wavy Extension, 23 inch (30.4cm)**

Say "yes please!" to loosely-spiraled layers & the hassle-free design of this one-piece, multi-level extension. Gorgeous, jaw-dropping length & volume for days is yours in an instant. Attaches with 7 pressure-sensitive clips.



Ebony - R2  
15202



Midnight Brown - R4  
15204



Dark Chocolate - R6  
15201



Chocolate Copper - R6/30H  
15200



Chestnut - R10  
15199



Buttered Toast - R1416T  
15198



Honey Ginger - R14/25  
15207



Ginger Blonde - R25  
15203



Golden Wheat - R14/88H  
15206



Swedish Blonde - R22  
15205



**French Braid Band**

Whether your spirit animal is a romantic hippie or a glam rock goddess, the French Braid Band will have your Coachella crew cooing, c'est magnifique! The French Braid Band is as quick & easy as putting on a headband... in a flash you're ready for any & all adventures! Sold individually.



Midnight Brown - R4  
15213



Chocolate Copper - R6/30H  
15216



Chestnut - R10  
15215



Buttered Toast - R1416T  
15210



Golden Wheat - R14/88H  
15212



Ginger Blonde - R25  
15211



Swedish Blonde - R22  
15214

**Highlight Wrap**

Take a fancy to this alluring, wrapped up-do. This patented style easily wraps around any bun, chignon or ponytail with a secure comfort elastic band holder. The Highlight Wrap incorporates multi-tonal shades & varying lengths, from 3 1/4 - 6 inches (8.25 - 15.2cm) to get you mad "wrap star" cred.



Ebony HI LT - R2/6  
15220



Midnight Brown HI LT - R4/8  
15224



Chocolate Copper - R6/30H  
15219



Chestnut - R10  
15218



Buttered Toast - R1416T  
15217



Honey Ginger - R14/25  
15223



Ginger Blonde - R25  
15221



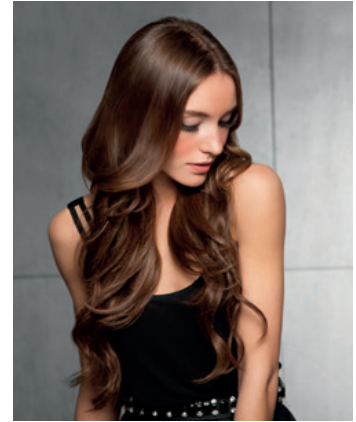
Golden Wheat - R14/88H  
15222



Swedish Blonde - R22  
15225

**Invisible Extension , 20 inch (50.8cm)**

Heavenly hair isn't just for runway models & Hollywood starlets anymore. Get mega-watt length & volume in seconds with this 20" (50.8cm) halo-style extension. Just slip it on like a headband & pull your own hair over it - the ingenious & inconspicuous design blends in seamlessly.



Ebony - R2  
15230



Midnight Brown - R4  
15234



Dark Chocolate - R6  
15229



Chocolate Copper - R6/30H  
15228



Chestnut - R10  
15227



Buttered Toast - R1416T  
15226



Honey Ginger - R14/25  
15233



Ginger Blonde - R25  
15231



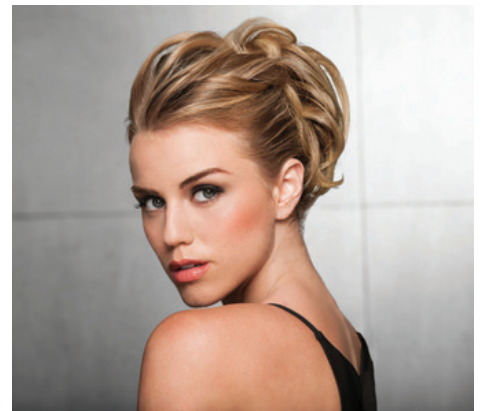
Golden Wheat - R14/88H  
15232



Swedish Blonde - R22  
15235

**Style-A-Do & Mini-Do Duo Pack**

This dynamic duo can be worn separately or together to create perfect up-dos, twisted rolls, high chignons & low chignons in no time. Just wrap these patented elastic-band pieces around a ponytail or bun to maximize your style quotient.



Ebony - R2  
15243



Midnight Brown - R4  
15249



Dark Chocolate - R6  
15252



Chocolate Copper - R6/30H  
15246



Chestnut - R10  
15251



Buttered Toast - R1416T  
15245



Honey Ginger - R14/25  
15248



Ginger Blonde - R25  
15244



Golden Wheat - R14/88H  
15247



Swedish Blonde - R22  
15250

**Wig Fantasy** - Slip into style with precision cuts & notice-me hues that mimic today's top trends. The best kept secret of Hollywood glamour types & chart-topping music stars, Hairdo wigs give you a bold beauty point-of-view & a new attitude.

**Arctic Melt (Midnight Blue, Purple, White)** - Melt hearts in this cool toned color combo. Long-rooted waves boldly go from midnight blue to purple that fades into white lilac. The Tru2Life® heat-friendly synthetic fiber can be styled into a different curl pattern or completely straight. With a comfortable cap design you can wear it for a night out or even all day. Arctic Melt gives you #hairgoals...no celebrity colorist or harsh chemicals required.

Front: 5 1/4" (13.3cm) Crown: 17 1/2" (44.4cm) Side: 14 1/2" (36.8cm) Back: 17 1/2" (44.4cm) Nape: 17 1/2" (44.4cm)

15208



**Blue Waves (Bold Blue)** - Mermaid hair is just seconds away. Make a splash in this bold blue with on-trend waves. Colors flow from a dark root to bold & baby blues. The Tru2Life® heat-friendly synthetic fiber can be styled curly or sleek. With a comfortable cap design you can wear it for a night out or even all day. Blue Waves will have you crushing it in the hair department. Front: 8 1/2" (21.5cm) Crown: 13 1/2" (34.2cm) Side: 9 1/2" (24.1cm) Back: 13 1/2" (34.2cm) Nape: 11" (27.9cm)

15209



**Lilac Frost (Grey, Purple)** - Show off your girly side in pretty pastel waves. The long lilac hair is tipped & topped with a darker root to make it bold but believable. The open cap is constructed & made to feel as cool as you'll look. To enhance your look add a braid, curl it or flat iron it super-straight.

Front: 14" (35.5cm) Crown: 18" (45.7cm) Side: 16" (40.6cm) Back: 18" (45.7cm) Nape: 17" (43.1cm)

15236



**Midnight Berry (Deep Purple)** - Fantasy meets fashion with this multi-dimensional berry hue. A touch of depth at the root gets you this season's hottest hair color without spending hours at the salon. Look & feel cool in this open wefted cap that is comfortable & adjustable. Change it up & add some waves or make it super-straight to show off the angles in this cut. Front: 12" (30.4cm) Crown: 6½" (16.5cm) Side: 8" (20.3cm) Back: 5" (12.7cm) Nape: 2" (5.08cm)  
15237



**Mint To Be (Mint Green)** - From the runways to salons & now to your home! One of the most sought-after rooted hair colors is yours without the bleaching & stripping. It's ready to wear so try it out for a day, a night or as long as your mint mood desires. The adjustable cap is made to fit comfortably & feels light & cool. Tru2Life® heat-friendly synthetic hair gives you styling versatility. If you weren't getting so many compliments, you'd forget you had it on!

Front: 4" (13.3cm) Crown: 13½" (44.4cm) Side: 11" (36.8cm) Back: 14" (44.4cm) Nape: 12" (30.4cm)  
15238



**Out Of The Blue (Rooted, Light Blue)** - Surprise the world with this bold & beautiful rooted blue. The angled cut offers natural volume & is made with Tru2Life® heat-friendly synthetic hair so you can add some curl or wave. The lightweight cap construction makes it easy to wear on a night out or all day long. Change it up by adding a full or side bang or simply shake, style & go! Front: 12" (30.4cm) Crown: 11" (27.9cm) Side: 11¾" (29.8cm) Back: 9½" (24.1cm) Nape: 6" (15.2cm)  
15239



**Peachy Keen (Rooted, Peach)** - The perfect shade of peachy pink can now be yours without commitment. This pastel color trend is paired with a bob cut, making it classic yet edgy. The multi-faceted color has a darker root to add contrast & a natural look. Have your hairstylist customize the bang & style the Tru2Life® heat-friendly synthetic hair with a curling iron or flat iron. The cap is made to be light & as cool as you. **Front: 3¾" (9.5cm) Crown: 11½" (29.2cm) Side: 8" (20.3cm) Back: 10" (25.4cm) Nape: 5" (12.7cm)**  
**15240**



**Pinky Promise (Rooted, Pink)** - We can't promise you won't stand out with this pop of pink. These classic layers are anything but ordinary. The dark root adds contrast & makes it look like you spent hours in the salon chair. The Tru2Life® heat-friendly synthetic fiber can be styled curly or completely straight. With a comfortable cap design you can wear it for a night out or even all day. Pinky Promise will have you lying about who did your hair color. **Front: 8½" (21.5cm) Crown: 13¾" (34.9cm) Side: 12¾" (32.3cm) Back: 14" (35.5cm) Nape: 12¼" (31.1cm)**  
**15241**



**Whiteout (Rooted, Platinum 60/6)** - Wow in this wickedly-white wig. The classic mid-length hairstyle is updated & made edgy with a silver white base & darker roots. Add your personal style to this cut by styling it curly or straight. The open wefted cap keeps you comfortable while you rock these locks. **Front: 10½" (26.6cm) Crown: 10½" (26.6cm) Side: 13½" (34.2cm) Back: 13½" (34.2cm) Nape: 13½" (34.2cm)**  
**15242**



**Fishtail Braid Headband**

Mermaid hair is just a headband away. Add it to sleek shiny hair or pull the edges & rough it up for a look that's ready for the beach.



Ebony - R2  
15307



Dark Chocolate - R6  
15310



Chocolate Copper - R6/30H  
15304



Chestnut - R10  
15306



Buttered Toast - R1416T  
15303



Ginger Blonde - R25  
15309



Golden Wheat - R14/88H  
15305



Swedish Blonde - R22  
15308

**Metallic Braid Extension, 20 inch (50.8cm)**

Glisten & glimmer in metal-worthy braids. These single braids are the perfect addition to any hair color & style. Just clip, shine & go!



Light Purple/Black  
15311



Light Purple/Blonde  
15312



Pink  
15314



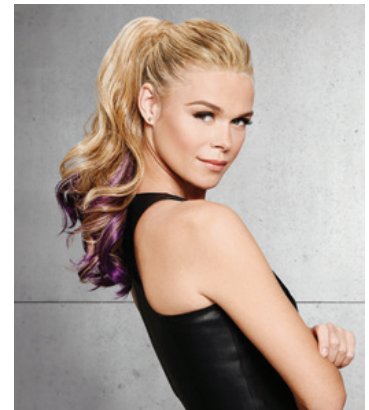
Purple  
15315



Teal  
15316

**Color Splash Pony, 23 inch (58.4cm)**

Get the 'social media star' look in an instant with the 23 inch (58.4cm) Color Splash Pony. Choose from your natural hair tone for hair bursting with highlighted & dip-dyed pastel ends: blue, pink, light green or lavender. This long & wavy pony includes a smooth strip of hair that wraps around the holder & fastens it in with a hook-and-loop strip to conceal where the ponytail meets your own hair.



Ebony  
R2/Denim Blue  
15272



Midnight Brown  
R4/Denim Blue  
15264



Chocolate Copper  
R6/30H/Denim Blue  
15255



Chestnut  
R10/Denim Blue  
15253



Buttered Toast  
R1416T/Denim Blue  
15271



Ginger Blonde  
R25/Denim Blue  
15259



Golden Wheat  
R14/88H/Denim Blue  
15261



Ebony  
R2/Dark Purple  
15267



Midnight Brown  
R4/Dark Purple  
15265



Chocolate Copper  
R6/30H/Dark Purple  
15256



Chestnut  
R10/Dark Purple  
15254



Buttered Toast  
R1416T/Dark Purple  
15269



Ginger Blonde  
R25/Dark Purple  
15260



Golden Wheat  
R14/88H/Dark Purple  
15262



Ebony  
R2/Red Wine  
15273



Midnight Brown  
R4/Red Wine  
15268



Chocolate Copper  
R6/30H/Red Wine  
15257



Chestnut  
R10/Red Wine  
15266



Buttered Toast  
R1416T/Red Wine  
15270



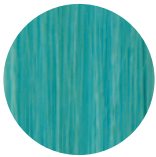
Ginger Blonde  
R25/Red Wine  
15258



Golden Wheat  
R14/88H/Red Wine  
15263

**Color Strip Extension, 18 inch (45.7cm)**

Stick to one or mix & match to brighten up your do. These heat-friendly POPs of color can be styled, braided or let loose.



Blue Frosting  
15295



Party Dress Green  
15296



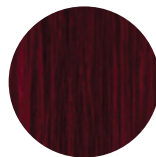
Silver Surprise  
15297



Starry Sky Blue  
15298



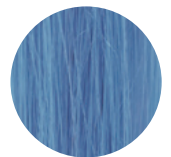
Pink Sprinkles  
15299



Berry Kiss  
15300



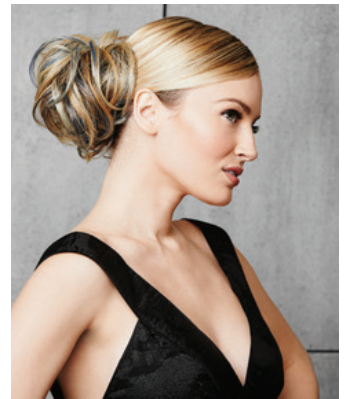
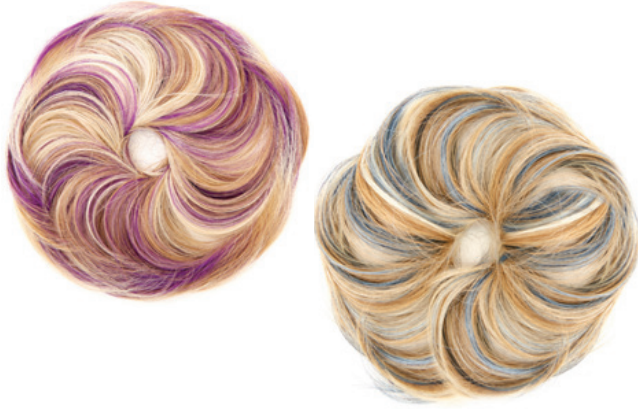
Party Purple  
15301



Royal Blue  
15302

**Color Splash Wrap**

Morph into an edgier you with the Color Splash Wrap by Hairdo! Dare to bare your love of denim, pursue-purple or rock-it-in-red. Put your hair in a bun or loop the ends of your pony then wrap it around. Wear one or mix & match to create your own look.



Ebony  
R2/Denim Blue  
15279



Midnight Brown  
R4/Denim Blue  
15292



Chocolate Copper  
R6/30H/Denim Blue  
15284



Chestnut  
R10/Denim Blue  
15274



Buttered Toast  
R1416T/Denim Blue  
15281



Ginger Blonde  
R25/Denim Blue  
15287



Ebony  
R2/Dark Purple  
15278



Midnight Brown  
R4/Dark Purple  
15293



Chocolate Copper  
R6/30H/Dark Purple  
15285



Chestnut  
R10/Dark Purple  
15275



R1416T/Dark Purple  
Buttered Toast  
15282



Ginger Blonde  
R25/Dark Purple  
15288



Golden Wheat  
R14/88H/Dark Purple  
15290



Ebony  
R2/Red Wine  
15280



Midnight Brown  
R4/Red Wine  
15294



Chocolate Copper  
R6/30H/Red Wine  
15286



Buttered Toast  
R1416T/Red Wine  
15283



Ginger Blonde  
R25/Red Wine  
15276



Golden Wheat  
R14/88H/Red Wine  
15291

**Hairdo Tru2Life® Color Ring 15317**



Table Stand for Hair Extensions  
Makes it much easier to see, compare & work with extensions. Organise strands to prevent tangling.  
**9372**



**HAIRDO EXTENSION MAINTENANCE LIQUID LINES**

**Cleanse**

Clean your wigs, hair pieces & extensions with this freshening shampoo.  
Specially formulated for synthetic or human hair  
- pH balanced.  
- Provides weightless moisture & shine.  
- Gently cleanses away styling product build-up.  
- Formulated to neutralize odors from wear with a fresh, light fragrance.

236ml  
**16159**



**Restore**

Restore your wigs, hairpieces & extensions with this leave-in conditioner & heat-styling protector.  
Specially formulated for synthetic or human hair.  
- 2-in-1 detangler & protectant.  
- Nourishes synthetic fibres for all-day softness.  
- Protectant when styling heat-friendly synthetic fibre.

236ml  
**16160**

