



21  
VENTUNO

tint me 

osmoikon  
PERMANENT HAIR COLOUR

  
WELLA  
PROFESSIONALS

Bleach & Color  
color pigments

**BIG**  
PROFESSIONAL

COMPAGNIA DEL COLORE 

# Permanent Color

All color ranges have upwards of 65 different shades. It is well known that not all colors in the range are equally popular. That results in wasted costs for the distributor as they have to carry stock of all shades irrespective of how well they sell. There are other expenses like color charts that have to be produced showing all shades, storage & other logistical costs even though only about a quarter of shades account for most of the sales.

In these difficult economic times, salons demand a suitable color solution: well-priced tints without compromising quality! HH&B are pleased to announce that we have met this challenge for the **tint me** range by creating a range that offers only the top 42 shades that sell the best at the most affordable price.

Because the **tint me** range is only made up of the best-selling permanent shades, we have been able to pass on substantial savings. This has allowed us the price this 100ml tint at the most affordable price possible. The newly introduced 180ml tubes gives a further cost saving of up to 30%!

The color is made in Italy by a world-class manufacturer with no compromise in the quality. It will perform to the highest expectations as only the best ingredients (Pure Micro Pigments) & the lowest levels of ammonia possible have been used. **tint me** is compatible with our CDC range of tints, giving you the flexibility to mix special colors as required.

**PLEASE ENQUIRE ABOUT OUR OPENING TINT ME DEALS!**

INTENSE NATURALS	100ml	180ml
1 Black	9251	14263
1.10 Intense Natural Blue Black	16995	
2 Darkest Brown	9252	14264
3 Dark Brown	9253	14265
4 Brown	9254	14266
5 Light Brown	9255	14268
6 Dark Blond	9256	14270
7 Blond	9257	14272
8 Light Blond	9258	
9 Very Light Blond	9259	
10 Intense Natural Platinum Blond	16996	
EXTRA INTENSE NATURALS		
4.000 Extra Intense Natural Brown	9260	14267
5.000 Light Extra Intense Natural Brown	9261	14269
6.000 Dark Extra Intense Natural Blond	9262	14271
7.000 Extra Intense Natural Blond	16284	16297
8.000 Extra Intense Natural Light Blond	16290	16303
ASH NATURALS		
4.01 Ash Natural Brown	16289	16302
5.01 Light Ash Natural Brown	16282	16295
6.01 Dark Ash Natural Blond	16281	16294
7.01 Ash Natural Blond	16283	16296
8.01 Light Ash Natural Blond	16286	16299
9.01 Very Light Ash Natural Blond	9263	
MAT NATURALS		
7.11 Mat Blond	16279	
8.11 Light Mat Blond	16278	
9.11 Very Light Mat Blond	16277	
SAVANNAH NATURALS		
5 NS Light Savannah Brown	9264	
6 NS Dark Savannah Blond	9265	
COPPER		
6.4 Dark Copper Blond	16292	16305
7.44 Intense Copper Blond	16276	
CHOCOLATE		
4.35 Chocolate Brown	9266	
5.35 Light Chocolate Brown	9267	
MOKA		
4.88 Moka Brown	9271	
5.88 Light Moka Brown	9272	
MAHOGANY		
4.5 Mahogany Brown	16999	

REDS	100ml	180ml
4.62 Red Violet Brown	16291	16304
5.56 Light Red Mahogany Brown	9268	14754
5.6 Light Red Brown	9269	
5.666 Extra Intense Red Light Brown	17000	
6.66 Dark Intense Red Blond	9270	
6.666 Extra Intense Red Blond	17001	
VIOLET		
2.2 Darkest Violet Brown	16997	
4.2 Violet Brown	16287	16300
5.22 Light Intense Violet Brown	16285	16298
5.222 Brown Violet Extra Intensive	16998	
SUPERLIGHTENERS		
10.1 Super Light Ash Blond	9273	
10.111 Platinum Metallic Blond	17004	
10.21 Platinum Irisé Ash Blond	17003	
12.11 Extreme Ash Blond	9274	14788
GREY		
Light Grey	9275	14262
Dark Grey	16280	16293
TONERS		
Silver	16288	16301
Lilac	17005	
SPECIALS		
9.21 Very Light Ice Blond	17002	

Tuft Swatch Chart, 53 Colors  
17454



180ml

100ml

NEW!

Toners  
100ml



Beige  
18032



Pink  
18033



Rose  
18034



Amethyst  
18035



Ash  
18036



Pearl  
18037



Copper  
18038



Natural  
18039



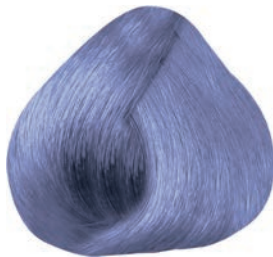
Clear  
18040



Gold  
18041



Violet  
18042



Blue  
18043



Smokey Silver  
18044



Toner Tuft Swatch Chart  
18251



tint me Professional Cream Peroxide - 1 Litre

NEW!



5 Volume (1.5%)  
18027



10 Volume (3%)  
18028



20 Volume (6%)  
18029



30 Volume (9%)  
18030



40 Volume (12%)  
18031

Professional MULTI-CHROMATIC, TRANSLUCENT color for shinier, brighter, natural & modern hair at half the processing time. Super-sized at 200ml for cost effective savings, to minimize waste & environmental sensitivity. Super-fast processing saving up to half the normal processing time for your time-sensitive clients who demand EXPRESS SERVICES.

# BIG

## PROFESSIONAL

## Beautiful Intelligent Genuine

Advanced, secure, performance focused, professional chemical service formulations & technologies

### PROFESSIONAL POINTS OF DIFFERENCE

Not all professional hair color is created equal...

There are thousands of professional hair color brands. Most are very similar.

BIG PROFESSIONAL is the new standard for the following 4 reasons:

#### 1. The Safest Hair Color Formulations

NH3 CONTROL

AMMONIA ENCAPSULATION TECHNOLOGY

Reduces ammonia inhalation & irritation by up to 90%

POLY-FORCE BOND SCIENCE

(BOND-REDUCTION) PROCESS TECHNOLOGY

Lifts & deposits without chemical bond breakage or damage

#### 2. Non-Progressive Hair Color that Processes in Half the Time

Thanks to new technologies we are witnessing grey coverage in as fast as 10 minutes (without chemical accelerators)

#### 3. Logical & Ecological

Professional sized products for professional use only

Reduces bulk packaging waste by more than 75%

Color Tube: 200ml

Developers: 3000ml

Powder Bleach: 2500g tub

Bleach Paste: 1000g tub

Direct Colors: 1000ml

Shampoo & Conditioner: 3000ml tubs

#### 4. Practical & Cost-Effective

The professional colorist can create everything to satisfy the clients' needs while cutting inventory by up to 80%

39 Shades, 5 Developers, 2 Bleach Types, 10 Direct Colors, 9

Permanent Toners & 4 Black Bar Treatments

### CLIENT BENEFITS

Lowest Ammonia, Purist Ingredients, Beautiful Color, Fabulous Hair with Comfort & Safety Benefits for you & for your clients!

12 CLIENT BENEFITS:

When speaking with a client regarding BIG PROFESSIONAL, speak to them about the benefits, not the features. While features & technologies are important, benefits relate the features & technologies to the client.

#### 1. Healthier Color Services

Let's be honest, there are no organic or natural oxidation hair colors or lightening services.

Effective permanent, semi & demi-permanent cosmetic hair colorings are chemical services.

BIG PRO offers safe hair color & lightening alternatives.

#### 2. No More Tears from Ammonia Vapors

Ammonia Performance. YES

Ammonia vapors. NO!

BIG PRO technologies reduce up to 90% ammonia vapor inhalation & irritation

#### 3. Beautiful Color in Half the Time

Chances are your clients took time off from work or family needs to make their appointments.

Thanks to BIG PRO technologies, colorists have the option to produce beautiful hair color in half the time of standard hair colors.

#### 4. Reduced Exposure

Scientists claim that under ideal conditions, the average healthy

persons capacity to defend against substantial chemical

absorption during oxidation processing is approximately 15 - 20

minutes. BIG PRO's standard processing times are approximately 15- 20 minutes.

#### 5. Improve Elasticity & Shine by Coloring your Hair

BIG PRO's bond building formulas & ABk-C Complex add extra strength & shine to lackluster, listless hair.

#### 6. Personalize Your Color

Color formulas aren't one-size-fits-all!

BIG PRO was created to mix & blend for hand-tailored color services, as opposed to one, flat, all-over color from a single tube or box.

#### 7. The More you Color the better your Hair looks & feels

Clients truly feel & see the difference as their hair quality greatly improves over time using BIG PRO.

#### 8. Natural Looking Translucency with Softer Growouts

The natural, multi-chromatic appearance of BIG PRO colors tend to grow out with softer blended lines of demarcation.

#### 9. No More "Just Tinted My Hair" Smell or Waxy Feel

BIG PRO colors easily wash & rinse free from the hair, leaving ZERO chemical or waxy residues. Hair feels & smells clean, fresh & natural.

#### 10. Dermatologically Tested on Humans, Verified Safe & Secure

BIG PRO is Fragrance-Free, Gluten-Free, SLS-Free, Paraben-Free, Silicone-Free, Vegan Friendly. Pure. Clean. Simple & Functional.

#### 11. More Savings, More Compliments

Following your stylist's BIG PRO prescription for color & maintenance, you will actually find you spend less time & money to look better than if you did your hair at home.

#### 12. Anti-Age Color for your Hair

As we age hair tends to get wiry, grey, dry & dull with less elasticity & difficult to color.

BIG PRO technologies fight free radicals, & subtly soften, cover, color, brighten & tone for a natural, lustrous, youthful appearance.



# NH3 CONTROL

AMMONIA ENCAPSULATION TECHNOLOGY

## INTERNATIONAL PATENT

This patented technology electromagnetically attracts, encapsulates and locks the Ammonia molecules and the emerging vapors into the color cream at the moment of activation with the BIG OXY BUTTER Developers.

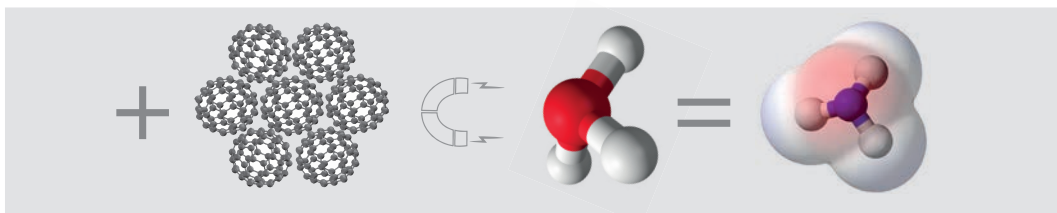
The encapsulated ammonia is then transported directly to the hair shaft where it gently and naturally opens the cuticles while acting as a catalyst enhancing the pigmentation process.

Once the color development is completed the water-soluble ammonia is easily carried away by water leaving no ammonia residues and no unpleasant irritating vapors or odors.

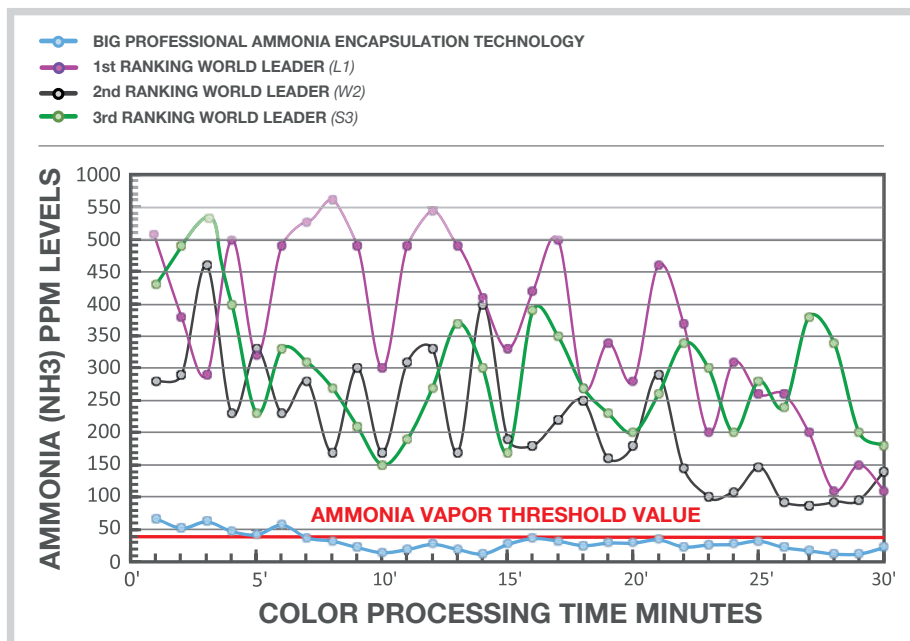
NANO-ABSORBED MOLECULAR MAGNETS

ACTIVATED AMMONIA

NH3 CONTROL AMMONIA ENCAPSULATION



## AMMONIA VAPORS RELEASE COMPARISON BETWEEN MAIN COMPETITORS



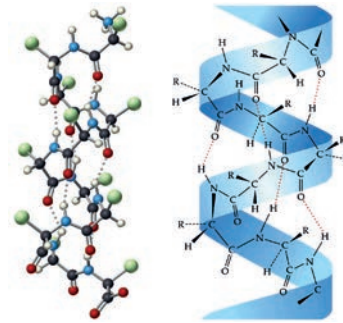
THE RED LINE REPRESENTS THE LEVEL OF HUMAN PERCEPTION TO THE PRESENCE OF AMMONIA VAPORS; below the red line humans are unaware to the presence of ammonia vapors. The GREY AREA represents high levels of toxicity.

**BOND REDUCTION:** This advanced technology gently reduces the hydrogen bonds, ionic bonds & disulphide bonds within the hair's polypeptide structures, facilitating pigment penetration without breakage or damage to the bonds.

The Big Professional Color cream contains 98.9% pure, ultra-refined color pigments which instantly enter, cluster & fuse with the hair's amino acid keratin protein structures.

This results in superior grey coverage, longevity of color & improved condition of the hair. Deeper penetration of the pigment & superior lift & deposit ensures true-to-color-chart results that last.

# BOND-REDUCTION



**BIG**  
PROFESSIONAL

**TARGETED HAIR REPAIR** enriched with A-BkC Complex. This Amino Btonik Conditioning Complex made of essential oils & botanic extracts:

- Recreates cuticles & seals in color
- Smooths static & frizz
- Repairs damage
- Prevents split ends
- Moisturizes & emulsifies dry hair
- Strengthens fragile hair
- Adds luster, softness & a silky finish
- Improves detangling & manageability
- Keeps hair youthful & elastic
- Gives UV & environmental protection

- BIG PROFESSIONAL** is:
- Dermatologically Tested
  - Fragrance-Free
  - Gluten-Free
  - SLS-Free
  - Paraben-Free
  - Vegan Friendly
  - No Animal Testing



**BIG PROFESSIONAL**  
The Coloring Book Technical  
13774



**BIG PROFESSIONAL**  
Color Chart  
13773



**BIG PROFESSIONAL**  
Tube Squeezer  
13917





# BIG

## PROFESSIONAL

## 40 shades of permanent color (the world's most popular shades):

	<b>NATURALS:</b> Mix 1+1 1/2
13720	3.0 BIG PROFESSIONAL DARKEST CHESTNUT 200ML
13723	5.0 BIG PROFESSIONAL LIGHT CHESTNUT 200ML
13731	7.0 BIG PROFESSIONAL BLONDE 200ML
13740	9.0 BIG PROFESSIONAL VERY LIGHT BLONDE 200ML
	<b>ASH NATURALS:</b> Mix 1+1 1/2
13721	4.01 BIG PROFESSIONAL NATURAL ASH CHESTNUT 200ML #
13727	6.01 BIG PROFESSIONAL NAT DARKASH CHESTNUT 200ML #
13738	8.01 BIG PROFESSIONAL NATURAL LT ASH BLONDE 200ML #
13744	10.01 BIG PROFESSIONAL NAT PLATINUM ASH BLONDE 200ML
	# Ideal for Men
	<b>ASH:</b> Mix 1+1 1/2
13719	1.10 BIG PROFESSIONAL BLUE BLACK 200ML
13724	5.11 BIG PROFESSIONAL LT INTENSIVE ASH CHESTNUT 200ML #
13732	7.11 BIG PROFESSIONAL INTENSIVE ASH BLONDE 200ML #
13741	9.11 BIG PROFESSIONAL VERY LT INTENSIVE ASH BLONDE 200ML #
	# Ideal for Men
	<b>GOLDEN:</b> Mix 1+1 1/2
13733	7.3 BIG PROFESSIONAL GOLDEN BLONDE 200ML
13742	9.3 BIG PROFESSIONAL VERY LT GOLDEN BLONDE 200ML
	<b>BEIGE:</b> Mix 1+1 1/2
13734	7.31 BIG PROFESSIONAL BEIGE BLONDE 200ML
13743	9.31 BIG PROFESSIONAL VERY LT BEIGE BLONDE 200ML
	<b>TOBACCO:</b> Mix 1+1 1/2
13729	6.35 BIG PROFESSIONAL TOBACCO DARK BLONDE 200ML
13735	7.35 BIG PROFESSIONAL TOBACCO BLONDE 200ML
13789	9.35 BIG PROFESSIONAL LIGHT TOBACCO BLONDE 200ML
	<b>MODA:</b> Mix 1+1 1/2
13722	4.45 BIG PROFESSIONAL BRONZE CHESTNUT 200ML
13726	5.53 BIG PROFESSIONAL CHOCOLATE LT CHESTNUT 200ML
13728	6.20 BIG PROFESSIONAL DARK BLONDE INTENSIVE VIOLET 200ML
13730	6.6 BIG PROFESSIONAL DARK RED BLONDE 200ML
13737	7.6 BIG PROFESSIONAL RED BLONDE 200ML
13725	5.5 BIG PROFESSIONAL LIGHT MAHOGANY CHESTNUT 200ML
	<b>COPPER:</b> Mix 1+1 1/2
13736	7.4 BIG PROFESSIONAL COPPER BLONDE 200ML
13739	8.44 BIG PROFESSIONAL LT BLONDE INTENSIVE COPPER 200ML
	<b>SUPER LIGHTENERS:</b> Mix 1+2
13745	11.0 BIG PROFESSIONAL ULTRA LT NAT BLONDE 200ML
13746	11.11 BIG PROFESSIONAL ULTRA LT ASH BLONDE 200ML #
13747	11.13 BIG PROFESSIONAL ULTRA LT BEIGE BLONDE 200ML
13748	11.2 BIG PROFESSIONAL ULTRA LT IRISE BLONDE 200ML
	# Ideal for Men
	<b>INTENSIVE BOOSTERS/COLOR CORRECTORS:</b>
13749	11A BIG PROFESSIONAL ASH COLOR-CORRECTOR BOOSTER 200ML
13750	22V BIG PROFESSIONAL VIOLET COLOR-CORRECTOR BOOSTER 200ML
13751	66R BIG PROFESSIONAL RED COLOR-CORRECTOR BOOSTER 200ML
13752	88B BIG PROFESSIONAL BLUE COLOR-CORRECTOR BOOSTER 200ML
13753	33G BIG PROFESSIONAL GOLD COLOR-CORRECTOR BOOSTER 200ML
13790	03Y BIG PROFESSIONAL YELLOW COLOR-CORRECTOR BOOSTER 200ML
13791	38G BIG PROFESSIONAL GREEN COLOR-CORRECTOR BOOSTER 200ML
13792	00C BIG PROFESSIONAL CLEAR COLOR-CORRECTOR BOOSTER 200ML

**BIG OXY BUTTER VELVETY LUSH DEVELOPER**

Performs a 5-Phase Fusion Action during the color process:

1. Activates the ammonia & oxidative actives within the color cream.
2. Assists with the encapsulation of the ammonia & developing vapors at the moment of oxidation.
3. Delivers the active ingredients directly to the hair shaft where it reacts in conjunction with the ammonia to lift & diffuse the natural pigments.
4. Assists with the development, delivery & linkage of the newly forming activated color pigments deep into the cortex to the amino protein structures.
5. The pigments are then linked & trapped in the spaces between the hair's peptide bonds for extended color vibrancy.

- 1% 3VOL 3L **13796**
- 3% 10VOL 3L **13754**
- 6% 20VOL 3L **13755**
- 9% 30VOL 3L **13756**
- 12% 40VOL 3L **13757**



**BIG BLUE BLEACH1+2 DUST FREE 5KG**

Formulated with Biodegradable Polyglycol-Dust-Inhibitor Technology. This anti-volatile technology creates a dust-free molecular composition with rapid bleaching action that lifts up to 7 levels, making it ideal for lightening darker base shades that require a higher lift concentration.

This ammonia free, pH-balanced formula adheres well, does not swell or expand to assist in preventing or minimizing overlapping. The Micronized Blue Pigment Technology creates a unique combination of lightening + toning for visibly clearer & cooler blonde results.

Recommended for stronger lift on medium to coarse hair with higher volumes % of developer. Can use the multiple application method. **13758**



**BIG CREAM BLEACH1+1 DE-COLORATION 2.5KG**

This conditioning cream lightener can easily & gently lift up to 6 levels, & is ideal for on scalp bleaching treatments as well as free-hand highlighting techniques. Built-in conditioning & barrier oils protect while the ultra-lightening factors work on lifting the melanin molecules to the desired levels.

The anti-yellow features work to neutralize warm hues from inside-out, giving it excellent toning capabilities. The creamy emollient formula gives the colorist an unlimited array of lightening technical options & application control.

Recommended for gentle bleaching on medium to fine hair with lower volume % developers. Can be used for multiple applications. **13759**



**SUPER SONIC BOND BLEACH 1+2**

A powder lightener that ensures 8/9 levels of lift & outstanding protective properties.

This BOND BUILDING BLEACH leaves hair incredibly soft & the hair structure remains supple & elastic even after total lightening. Low ammonia, MEA-free formulation does not swell or expand preventing overlap. **2.5KG 14613**



**BIG COLOR DIRECT SEMI-PERMANENT**

An alkaline direct color conditioning system.

The collection has ten concentrated shades.

Depending on the amount of color & technique used these luscious, joyous shades can produce amazing colors, change or intensify the natural base tone, create avant-garde effects or gentle natural pastels & highlights.

When you want to lighten the BIG Color Direct color shades or create a pastel tone, mix the color with the 000.Pastel White toner a small amount at a time in a bowl until the desired shade is achieved. To darken, intensify, deepen or create more matte color tones, gradually add .111 Black to the mixture until the desired richness is achieved.



- .111 BLACK 1L **13760**
- .000 PASTEL 1L **13769**
- .18 IRON 1L **13765**
- .01 METAL 1L - NEW BOND FORMULA\* **13766**
- .33 GOLD 1L **13764**
- .62 FUCSIA 1L **13763**
- .77 BROWN 1L **13761**
- .44 COPPER 1L **13762**
- .22 VIOLET 1L - NEW BOND FORMULA\* **13767**
- .66 RED 1L **13768**

\*BEST SELLER



**BIG BACK BAR POST COLOR SHAMPOO & TREATMENTS:**  
pH-Balancing Targeted Hair Repair

**BIG BACK BAR POST COLOR SHAMPOO**

Thanks to the low pH3.9 factor, this luscious shampoo used after professional coloring completes the fixing of the pigments deep within & ensures durability & brilliance of color.

It favors the balance of pH levels while eliminating alkaline residues. Restores moisture & elasticity, re-establishing the proper physiological condition of skin & hair.

3000ml  
13770



**BIG BACK BAR POST COLOR CONDITIONER**  
Post-Color Conditioner pH4.5  
A Post-Color Treatment that reconstructs & offers intensive rehydration & combability.

Post-Color Conditioning treatment counteracts the oxidation & aging of cosmetic color enhancing the naturalness & brilliance of color.  
3000ml  
13771



**COLOR CARE HOME TREATMENTS**

**POST-COLOR SHAMPOO**

Non stripping, protects & seals in color  
pH 4.5  
480ml  
14101



**BIG BACK BAR POST COLORFIX SPRAY**  
Post-Color ColorFix Leave-in Spray pH3.5  
Intensive Post-Color treatment spray, multi-action, leave-in. Gives immediate body & vitality to the hair. Easy to use, has multiple properties:

- Increases the shine of the hair.
- Disciplines frizzy hair.
- Facilitates combing.
- Gives body & volume.
- Increases the longevity & intensity of color.
- Protects from heat damage.
- Speeds up the drying.
- Increases the color fastness.
- Restores the pH of skin & hair after every technical treatment.

500ml  
13772



**POST-COLOR CONDITIONER**

pH 4.0  
480ml  
14102



**POST-COLOR COLORFIX SPRAY**

pH 3.5  
250ml  
14103



A range of color pigmentation:  
BLEACH & COLOR® PERMANENT CREAM & SPECIALONECOLOR® SEMI-PERMANENT MASKS.  
Made in Italy

A revolutionary one step, high fashion hair color system  
From the color you have, to the color you want in one step!

Unlike any other product on the market, Bleach&Color® lifts & deposits color pigments on both natural & previously colored hair in one step. Bleach&Color® offers endless creativity, with the ability to lift up to 7 levels, while oxidation-resistant pigments deposit into the hair shaft.

Bleach&Color® permanent cream 80ml, 16 shades:



There are 3 main components that comprise Bleach&Color®

- **Lightening** - upon application, Bleach&Color® Cream first acts as a decolorizer to remove the pigments present in the hair (both natural & synthetic)
- **Depositing** - once the hair has been lightened appropriately, Bleach&Color® Color cream begins depositing the new oxidation-resistant pigments into the hair
- **Combined** - the lightening & depositing actions create an ideal environment for the new color pigments to bond with those remaining in the hair after lightening, while leaving the cuticle intact, ensuring minimal damage to the hair



**HOW TO USE:**

The mixing ratio is 1 part developer to 1 part BLEACH&COLOR®. (example: 30g of 30 volume developer + 30g Bleach&Color®)

For best results, always use a scale to measure, & mix formula thoroughly until smooth.

Choose the right developer that suits the amount of lift required, either 20 volume, 30 volume or 40 volume.

40 volume is recommended for previously colored & level 5 or darker hair.

Cover the hair with foil, meche or a processing cap, & you may process under heat. Check the hair after 10-15 minutes to ensure the cuticle is not damaged. As long as the hair is not damaged, continue processing under heat, checking every 10 minutes (check green every 5-10 minutes), up to 50 minutes. Remove from heat & allow an additional 15 minutes for the color to deposit. It is extremely important to monitor the color progression.

**IMPORTANT:** The shades containing primarily blue pigment (blue, aquamarine, & green) are considered advanced shades & must be monitored very closely. If the green is left longer than intended, the blue pigment will become the dominant pigment & the hair will appear more blue than green. Once you have achieved your desired color, rinse the hair & shampoo to remove any color residue. Do not condition if you plan to apply a mask.

Light  
Blonde  
13193



Ash  
Blonde  
13194



Silver  
13195



Steel  
13196



Champagne  
13197



Brown  
13198



Yellow  
13199



Copper  
Blonde  
13200



Titian  
Blonde  
13201



Red  
13202



Fuchsia  
13203



Violet  
Magenta  
13204



Purple  
13205



Aqua  
Marine  
13206



Green  
13207



Blue  
13208



SpecialOneColor® Semi-Permanent Masks can be used to enhance an existing shade in the hair or to change the shade in pre-lightened hair. Create unlimited shades by mixing any of the SpecialOneColor® masks together to create any custom shade you desire. The 000 mask is used to dilute more intense masks shades & create pastel colors.

**SpecialOneColor® masks:**

Unlike other direct dyes, SpecialOneColor® masks contain a special alkaline agent which allows the pigments to penetrate the hair cuticle & adhere to the hair for longer-lasting results.

SpecialOneColor® masks do not require developer. When formulating, simply choose the desired color masks & apply directly to the hair. Do not add developer to your formulation.

If hair has been previously lightened or decolorized, SpecialOneColor® masks can be used without Bleach&Color®.

**HOW TO USE:**

Choose your desired mask shade(s). If mixing more than 1 mask together, make sure to mix well to ensure even color distribution. Apply the mask to pre-washed, towel dried hair. Process for 15 - 20 minutes, then thoroughly rinse, shampoo & condition the hair. For optimal results, use on hair that has been previously colored with BLEACH&COLOR®.

**Color Stabilizer pH 3.5 Spray 230ml:**

pH 3.5 spray is the final step in the system. It prevents the hair color from fading, seals the cuticle & leaves the hair shiny & soft. It is imperative to use the pH 3.5 spray to extend the life of the color, keep the cuticle smooth & the hair shiny.

The pH 3.5 spray is also an excellent product for clients to use at home in order to keep their color vibrant & shiny between appointments.

**HOW TO USE:**

After shampooing, apply pH 3.5 spray to return the hair to its natural pH & close the cuticle. For best results, spray on clean damp hair & use a wide tooth comb to evenly distribute the product after every shampoo, then proceed with styling.



SpecialOneColor® masks 200ml (except Pastel White 000 400ml)



Bleach&Color® (16) & SpecialOneColor® (18) Tuft Color Chart 13228

- 000  
Pastel White  
13209
- 11  
Intense Grey  
13211
- 02  
Lavender  
13212
- 22  
Intense Violet  
13213
- 88  
Blue  
13214
- 03  
Very Light Golden Blonde  
13215
- 13  
Light Beige  
13216
- 34  
Golden Copper  
13217



- 04  
Copper  
13218
- 44  
Intense Copper  
13219
- 05  
Mahogany  
13220
- 52  
Magenta  
13221
- 56  
Ruby Red  
13222
- 62  
Fuchsia  
13223
- 66  
Intense Red  
13224
- 07  
Moka  
13225
- 75  
Cocoa  
13226

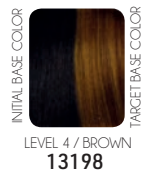


How do you use this system? For example:

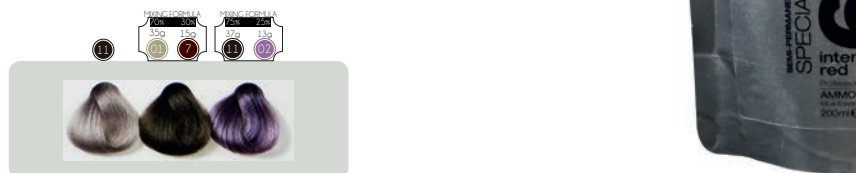
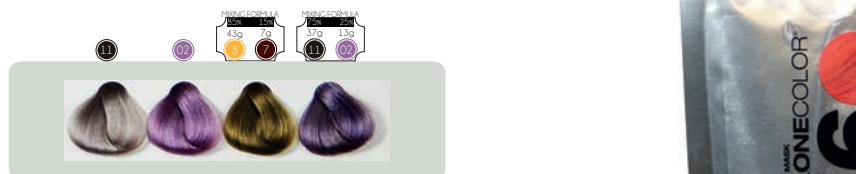
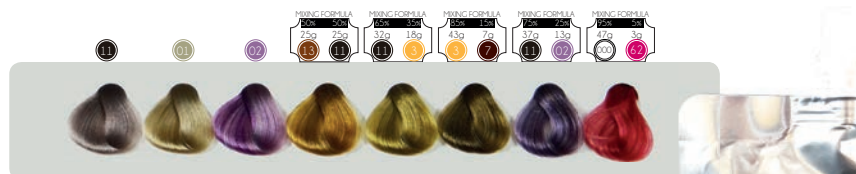
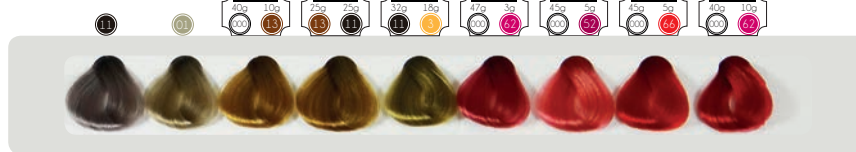
1. If your initial base color is a level 4, using any one of the 16 BLEACH&COLOR® permanent shades achieves the target base color shown on the right-hand side. Assuming you used champagne (13197), this is the effect:
2. If you want a more intensive color, choose any of the 18 SPECIALONECOLOR® semi-permanent shades or a combination of different colors to achieve any one of the 10 results shown:
3. Once the Bleach&Color® is fully processed, the resultant base color may be altered and/or enhanced with one or a formulation mixture of SpecialOneColor® Masks as shown below. Other makes of fashion color lines require pre-lightening to a light blonde shade in order for the fashion colors to show up, however, when the colors fade, the base they fade to is usually an uneven, & sometimes "washed out", leaving an undesirable tone. With Bleach&Color® the new base color is permanent, which means the mask shades will always have those base tones to adhere to, & will never fade to those uneven & undesirable tones.



BASE / BLEACH&COLOR®



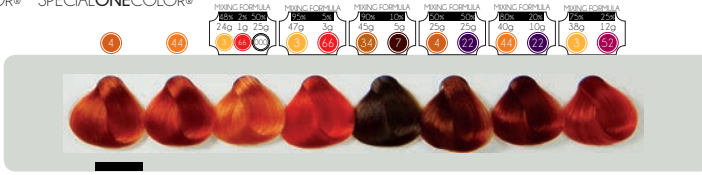
SEMI-PERMANENT MASK / SPECIALONECOLOR®



COLOR PIGMENT  
BASE / BLEACH&COLOR®

SEMI-PERMANENT MASK  
SPECIAL ONE COLOR®

INITIAL BASE COLOR  
TARGET BASE COLOR  
LEVEL 4 / COPPER BLONDE  
13200



INITIAL BASE COLOR  
TARGET BASE COLOR  
LEVEL 4 / TITAN BLONDE  
13201



INITIAL BASE COLOR  
TARGET BASE COLOR  
LEVEL 4 / RED  
13202



INITIAL BASE COLOR  
TARGET BASE COLOR  
LEVEL 4 / FUCHSIA  
13203



INITIAL BASE COLOR  
TARGET BASE COLOR  
LEVEL 4 / VIOLET MACENTA  
13204



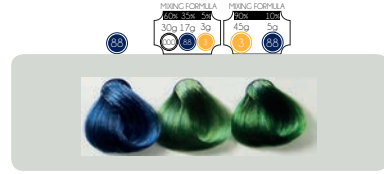
INITIAL BASE COLOR  
TARGET BASE COLOR  
LEVEL 4 / PURPLE  
13205



INITIAL BASE COLOR  
TARGET BASE COLOR  
LEVEL 10 / AQUA-MARINE  
13206



INITIAL BASE COLOR  
TARGET BASE COLOR  
LEVEL 10 / GREEN  
13207



INITIAL BASE COLOR  
TARGET BASE COLOR  
LEVEL 10 / BLUE  
13208



# COMPAGNIA DEL COLORE®

Love is in the Hair

**Made in Italy**

CDC is well known for its quality & extreme variety of high technology colors. You can choose from 130 different colors, making it the widest range in the world & allowing you to really express your creativity & satisfy any of your customer's requirements. CDC coloring cream formula has the lowest possible level of ammonia thanks to the use of **Pure Micro Pigments** which guarantee deep penetration of the color molecule with the minimum disruption to the hair's natural structure.

- Great & consistent color results whilst respecting the hair: the natural ingredients used guarantee uniformity of color, brightness, shine & long-lasting properties, also making the hair silky & soft.
- 100% Grey coverage power.
- Lifting power: 1 to 4 tones with higher lifting from the super lightening shades.
- Cost effectiveness: all colors are packed in 100ml tubes with a mix ratio of 1 part color to 1.5 parts developer, allowing up to 3 applications per tube.
- Easy to use: the particular emollient qualities of the ingredients & the mix ratio make the color easy to apply, spread & rinse out
- Environmentally friendly: the color is low in ammonia & bio-degradable.
- The coloring cream combines two precious ingredients: Orange butter & Honey. Orange butter has anti-oxidising, UV protection, anti-pollution & anti-age properties, while honey is nourishing & hydrating for cuticles & gives elasticity, body & shine to hair.

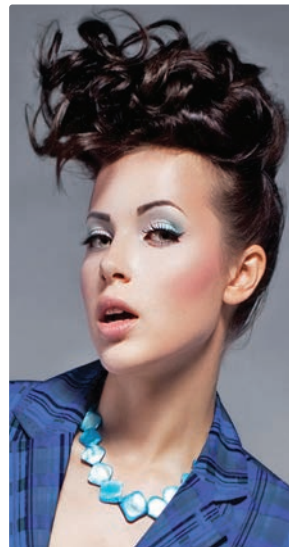


Opening deals available. Please request details.

**TIP**  
100ml CDC tint weighs 96g  
100ml peroxide weighs 92g









**CDC Scalp Soothing Fluid 004**  
Protects the scalp during chemical treatments. Applied either directly on the skin or mixed with product used.  
150ml  
**8063**



INTENSE NATURALS	
CDC 1 Black 100ml	3277
CDC 1.10 Blue Black 100ml	3296
CDC 2 Darkest Brown 100ml	3278
CDC 3 Dark Brown 100ml	3279
CDC 4 Brown 100ml	3280
CDC 5 Light Brown 100ml	3281
CDC 6 Dark Blond 100ml	3282
CDC 7 Blond 100ml	3283
CDC 8 Light Blond 100ml	3284
CDC 9 Very Light Blond 100ml	3285
CDC 10 Natural Platinum Blond 100ml	3286

EXTRA INTENSE NATURALS (for resistant grey coverage)	
CDC 4.000 Extra Intense Natural Brown 100ml	5502
CDC 5.000 Light Extra Intense Natural Brown 100ml	5503
CDC 6.000 Dark Extra Intense Natural Blond 100ml	5504
CDC 7.000 Extra Intense Natural Blond 100ml	5505
CDC 8.000 Extra Intense Natural Light Blond 100ml	5506
ASH NATURALS	
CDC 4.01 Ash Natural Brown 100ml	3297
CDC 5.01 Light Ash Natural Brown 100ml	3298
CDC 6.01 Dark Ash Natural Blond 100ml	3299
CDC 7.01 Ash Natural Blond 100ml	3300
CDC 8.01 Light Ash Natural Blond 100ml	3301
CDC 9.01 Very Light Ash Natural Blond 100ml	3302
MAT NATURALS	
CDC 6.11 Dark Mat Blond 100ml	3492
CDC 7.11 Mat Blond 100ml	3493
CDC 8.11 Light Mat Blond 100ml	3461
CDC 9.11 Very Light Mat Blond 100ml	3462
SAVANNAH NATURALS	
CDC 4 NS Savannah Brown 100ml	3407
CDC 5 NS Light Savannah Brown 100ml	3408
CDC 6 NS Dark Savannah Blond 100ml	3409
CDC 7 NS Savannah Blond 100ml	3410
CDC 8 NS Light Savannah Blond 100ml	3411
CDC 9 NS Very Light Savannah Blond 100ml	3412
CDC 10 NS Platinum Savannah Blond 100ml	3413
WARM NATURALS	
CDC 5.03 Light Warm Natural Brown 100ml	3290
CDC 6.03 Dark Warm Natural Blond 100ml	3291
CDC 7.03 Warm Natural Blond 100ml	3292
CDC 8.03 Light Warm Natural Blond 100ml	3293
CDC 9.03 Very Light Warm Natural Blond 100ml	3294
CDC 10.03 Warm Natural Platinum Blond 100ml	3295
BEIGE	
CDC 4.32 Medium Beige Brown 100ml	16972
CDC 5.32 Light Beige Brown 100ml	16973
CDC 6.32 Dark Beige Blond 100ml	3303
CDC 7.32 Beige Blond 100ml	3304
CDC 8.32 Light Beige Blond 100ml	3305
CDC 9.32 Very Light Beige Blond 100ml	3306
CDC 10.32 Platinum Beige Blond 100ml	3414

<b>GOLDEN</b>	
CDC 4.3 Golden Brown 100ml	3307
CDC 5.3 Light Golden Brown 100ml	3308
CDC 6.3 Dark Golden Blond 100ml	3309
CDC 7.3 Golden Blond 100ml	3310
CDC 8.3 Light Golden Blond 100ml	3311
CDC 9.3 Very Light Golden Blond 100ml	3312
<b>INTENSE GOLDEN</b>	
CDC 5.33 Light Intense Golden Brown 100ml	3415
CDC 6.33 Dark Intense Golden Blond 100ml	3416
CDC 7.33 Intense Golden Blond 100ml	3287
CDC 8.33 Light Intense Golden Blond 100ml	3288
CDC 9.33 Very Light Intense Golden Blond 100ml	3289
<b>COPPER</b>	
CDC 4.4 Copper Brown 100ml	3313
CDC 5.4 Light Copper Brown 100ml	3314
CDC 6.4 Dark Copper Blond 100ml	3315
CDC 7.4 Copper Blond 100ml	3316
CDC 8.4 Light Copper Blond 100ml	3317
CDC 9.4 Very Light Copper Blond 100ml	3318
CDC 7.44 Intense Copper Blond 100ml	3319
CDC 6.34 Dark Gold Copper Blond 100ml	3345
CDC 7.34 Gold Copper Blond 100ml	3346
CDC 8.34 Light Gold Copper Blond 100ml	3347
CDC 9.34 Very Light Gold Copper Blond 100ml	3348
<b>MAHOGANY</b>	
CDC 4.5 Mahogany Brown 100ml	3320
CDC 5.5 Light Mahogany Brown 100ml	3321
CDC 6.5 Dark Mahogany Blond 100ml	3322
CDC 7.5 Mahogany Blond 100ml	3323
CDC 5.55 Intense Light Mahogany Brown 100ml	3325
CDC 8.52 Light Mahogany Violet Blond 100ml	3324
<b>CHOCOLATE</b>	
CDC 4.35 Chocolate Brown 100ml	3362
CDC 5.35 Light Chocolate Brown 100ml	3363
CDC 6.35 Dark Chocolate Blond 100ml	3364
CDC 7.35 Chocolate Blond 100ml	3365
CDC 8.35 Light Chocolate Blond 100ml	3366
<b>RED</b>	
CDC 4.62 Red Violet Brown 100ml	3327
CDC 7.62 Red Violet Blond 100ml	3332
CDC 5.56 Light Red Mahogany Brown 100ml	3328
CDC 5.6 Light Red Brown 100ml	3329
CDC 6.6 Dark Red Blond 100ml	3330
CDC 6.66 Dark Intense Red Blond 100ml	3326
CDC 7.66 Intense Red Blond 100ml	3333
CDC 8.66 Light Intense Red Blond 100ml	3417
CDC 7.46 Red Copper Blond 100ml	3331
CDC 8.46 Light Red Copper Blond 100ml	3418
<b>Mat</b>	
CDC 6.7 Intense Dark Matte Blond 100ml	 16975
CDC 7.7 Intense Medium Matte Blond 100ml	 16976
CDC 8.7 Intense Light Matte Blond 100ml	 16977

<b>VIOLET</b>	
CDC 2.2 Darkest Violet Brown 100ml	3334
CDC 4.2 Violet Brown 100ml	3335
CDC 5.2 Light Violet Brown 100ml	3336
CDC 6.2 Dark Violet Blond 100ml	3337
CDC 7.2 Violet Blond 100ml	3419
CDC 5.22 Light Intense Violet Brown 100ml	3338
<b>TOBACCO</b>	
CDC 4.23 Tobacco Brown 100ml	3341
CDC 5.23 Light Tobacco Brown 100ml	3342
CDC 6.23 Dark Tobacco Blond 100ml	3343
CDC 7.23 Tobacco Blond 100ml	3344
CDC 8.23 Light Tobacco Blond 100ml	3420
<b>HAZELNUT</b>	
CDC 4.73 Hazelnut Brown 100ml	3421
CDC 5.73 Light Hazelnut Brown 100ml	3422
CDC 6.73 Dark Hazelnut Blond 100ml	3423
CDC 7.73 Hazelnut Blond 100ml	3424
CDC 8.73 Light Hazelnut Blond 100ml	3425
CDC 9.73 Very Light Hazelnut Blond 100ml	3426
<b>MOKA</b>	
CDC 4.88 Moka Brown 100ml	3427
CDC 5.88 Light Moka Brown 100ml	3428
<b>CARAMEL</b>	
CDC 5.8 Gianduia Caramel Brown 100ml	 16974
CDC 6.8 Dark Caramel Blond 100ml	3429
CDC 7.8 Caramel Blond 100ml	3430
<b>IRISÉ</b>	
CDC 8.21 Light Irisé Ash Blond 100ml	 16970
CDC 10.21 Platinum Irisé Ash Blond 100ml	 16971
<b>SUPERLIGHTENERS (mix ratio 1:2)</b>	
CDC 10.0 Super Light Natural Blond 100ml	3349
CDC 10.1 Super Light Ash Blond 100ml	3352
CDC 10.13 Super Light Pearl Blond 100ml	3351
CDC 10.3 Super Light Golden Blond 100ml	3350
CDC 11.0 Platinum Blond 100ml	3353
CDC 11.13 Pearl Platinum Blond 100ml	3355
CDC 11.3 Golden Platinum Blond 100ml	3354
CDC 12.00 Extreme Blond 100ml	3431
CDC 12.03 Extreme Golden Blond 100ml	3432
CDC 12.11 Extreme Ash Blond 100ml	3434
CDC 12.13 Extreme Pearl Blond 100ml	3433
<b>CORRECTIVE AGENTS</b>	
CDC Yellow 100ml	3356
CDC Red 100ml	3357
CDC Orange 100ml	3437
CDC Violet 100ml	3358
CDC Blue 100ml	3359
CDC Green 100ml	3360
CDC Clear 100ml	3361
<b>GREY</b>	
CDC Light Grey 100ml	3339
CDC Dark Grey 100ml	3340
<b>TONERS</b>	
CDC Lilac 100ml	3435
CDC Silver 100ml	3436

Ideal to work on the lengths of hair (with 7 or 10 vol. peroxide) after having done the roots with permanent shades.

Also ideal for using on treated hair (highlighted, permed, bleached) as ammonia free colors have a greater restructuring power on damaged, processed hair.

52 Colors: 49 are the same as permanent shades with 3 special shades only available in ammonia free. Also can be used between tints for temporary retouches.

<b>INTENSE NATURALS - AMMONIA FREE 100ml</b>	
CDC 1 Black	10050
CDC 1.10 Blue Black	10051
CDC 2 Darkest Brown	10055
CDC 3 Dark Brown	10056
CDC 4 Brown	10057
CDC 5 Light Brown	10062
CDC 6 Dark Blond	10072
CDC 7 Blond	10081
CDC 8 Light Blond	10090
CDC 9 Very Light Blond	10095
CDC 10 Natural Platinum Blond	10052
<b>ASH NATURALS - AMMONIA FREE, 100ml</b>	
CDC 5.01 Light Ash Natural Brown	10063
CDC 7.01 Ash Natural Blond	10082
CDC 9.01 Very Light Ash Natural Blond	10096
<b>BEIGE - AMMONIA FREE, 100ml</b>	
CDC 10.32 Platinum Beige Blond	10054
CDC 8.32 Light Beige Blond	10092
CDC 9.32 Very Light Beige Blond	10097
<b>GOLDEN - AMMONIA FREE, 100ml</b>	
CDC 5.3 Light Golden Brown	10066
CDC 6.3 Dark Golden Blond	10074
CDC 7.3 Golden Blond	10084
CDC 8.3 Light Golden Blond	10091
<b>COPPER - AMMONIA FREE, 100ml</b>	
CDC 4.4 Copper Brown	10059
CDC 5.4 Light Copper Brown	10068
CDC 6.34 Dark Golden Copper Blond	10075
CDC 6.4 Dark Copper Blond	10077
CDC 7.4 Copper Blond	10086
CDC 8.34 Light Gold Copper Blond	10093
CDC 8.4 Light Copper Blond	10094
<b>MAHOGANY - AMMONIA FREE, 100ml</b>	
CDC 5.5 Light Mahogany Brown	10069
CDC 6.5 Dark Mahogany Blond	10078
CDC 7.5 Mahogany Blond	10088
<b>CHOCOLATE - AMMONIA FREE, 100ml</b>	
CDC 5.35 Light Chocolate Brown	10067
CDC 6.35 Dark Chocolate Blond	10076
CDC 7.35 Chocolate Blond	10085

<b>RED - AMMONIA FREE, 100ml</b>	
CDC 4.62 Red Violet Brown	10060
CDC 5.6 Light Red Brown	10070
CDC 6.6 Dark Red Blond	10079
CDC 7.46 Copper Red Blond	10087
<b>VIOLET - AMMONIA FREE, 100ml</b>	
CDC 4.2 Violet Brown	10058
CDC 5.22 Light Intense Violet Brown	10064
CDC 6.2 Dark Violet Blond	10073
<b>TOBACCO - AMMONIA FREE, 100ml</b>	
CDC 5.23 Light Tobacco Brown	10065
CDC 7.23 Tobacco Blond	10083
<b>MOKA - AMMONIA FREE, 100ml</b>	
CDC 4.88 Moka Brown	10061
CDC 5.88 Light Moka Brown	10071
<b>CARAMEL - AMMONIA FREE, 100ml</b>	
CDC 6.8 Dark Caramel Blond	10080
CDC 7.8 Caramel Blond	10089
<b>SUPERLIGHTENERS (MIX RATIO 1:2) - AMMONIA FREE, 100ml</b>	
CDC 10.1 Super Light Ash Blond	10053
<b>SPECIAL SHADES - AMMONIA FREE, 100ml (not available in permanent color)</b>	
CDC 9.21 Very Light Ice Blond	5242
CDC 5.666 Extra Intense Red Light Brown	5240
CDC 7.666 Extra Intense Red Blond	5241
<b>CORRECTIVE AGENT, 100ml</b>	
Clear	10098





BY POPULAR DEMAND - CDC CREAM PEROXIDE

Should be used in conjunction with CDC Permanent color range to enhance the final result. Rich in conditioning & protective agents. Scented for stylist & customer's comfort. Made in Italy.

					
7 Volume 150ml 1000ml	<b>10100</b> <b>10099</b>	10 Volume, to tone & give 1 level lift 1000ml <b>7271</b>	20 Volume, covers grey & gives 2 levels lift 1000ml <b>7272</b>	30 Volume, achieves 3 levels of lift & can be used with superlightener series 1000ml <b>7273</b>	40 Volume, achieves 4 levels of lift & must be used with superlightener series 1000ml <b>7274</b>

Tuft Swatch Chart  
125 permanent, 5 correctors & 52 ammonia-free shades  
**3403**



Bleach powder, dust free, 500g  
White  
**3375**



Blue  
**3376**



From Dark Chocolates & Vibrant Coppers to Superlight Blondes, OSMO IKON offers extensive coloring options & easy application. Serious colorists are free to express their creativity & versatility. The micro-sized OSMO IKON color molecules are easily absorbed in the hair cuticle, allowing for a far lower ammonia content in the formula. Hair conditioning is significantly improved. MCT molecules are locked into the cuticle, providing longer-lasting color clarity, complete grey coverage & multi-dimensional shine.

**PLEASE ENQUIRE ABOUT OUR OPENING OSMO IKON DEALS!**

<b>NATURALS</b>	
1.0 Black 100ml	<b>8064</b>
3.0 Dark Brown 100ml	<b>8102</b>
4.0 Medium brown 100ml	<b>8104</b>
5.0 Light Brown 100ml	<b>8110</b>
6.0 Dark Blonde 100ml	<b>8121</b>
7.0 Medium Blonde 100ml	<b>8130</b>
8.0 Light Blonde 100ml	<b>8138</b>
9.0 Very Light Blonde 100ml	<b>8146</b>
10.0 Lightest Blonde 100ml	<b>8094</b>
<b>COOL NATURALS</b>	
5.00 Natural Cold 100ml	<b>10769</b>
6.00 Natural Cold 100ml	<b>10770</b>
7.00 Natural Cold 100ml	<b>10771</b>
8.00 Natural Cold 100ml	<b>10772</b>
9.00 Natural Cold 100ml	<b>10773</b>
<b>WARM NATURALS</b>	
4NW Medium Natural Warm Brown 100ml	<b>8108</b>
5NW Light Natural Warm Brown 100ml	<b>8119</b>
6NW Dark Natural Warm Blonde 100ml	<b>8129</b>
7NW Medium Natural Warm Blonde 100ml	<b>8137</b>
<b>BAHIA</b>	
5.003 Light Chocolate Brown 100ml	<b>8111</b>
6.003 Dark Chocolate Blonde 100ml	<b>8122</b>
7.003 Medium Chocolate Blonde 100ml	<b>8131</b>
8.003 Light Chocolate Blonde 100ml	<b>8139</b>
9.003 Very Light Chocolate Blonde 100ml	<b>8147</b>
<b>SPECIAL BLACK</b>	
1.1 Black - Blue 100ml	<b>8093</b>
<b>ASH</b>	
4.1 Medium Ash Brown 100ml	<b>10774</b>
5.1 Light Ash Brown 100ml	<b>10775</b>
6.1 Dark Ash Blonde 100ml	<b>10776</b>
7.1 Medium Ash Blonde 100ml	<b>10777</b>
8.1 Light Ash Blonde 100ml	<b>10778</b>
9.1 Very Light Ash Blonde 100ml	<b>10779</b>
10.1 Lightest Ash Blonde 100ml	<b>16666</b>

<b>INTENSE ASH</b>	
6.11 Intense Ash Dark Blonde 100ml	<b>16711</b>
7.11 Intense Ash Blonde 100ml	<b>16712</b>
8.11 Intense Ash Light Blonde 100ml	<b>16663</b>
9.11 Intense Ash Very Light Blonde 100ml	<b>16665</b>
<b>GOLDEN</b>	
5.3 Light Golden Brown 100ml	<b>8114</b>
6.3 Dark Golden Blonde 100ml	<b>8124</b>
7.3 Medium Golden Blonde 100ml	<b>8133</b>
8.3 Light Golden Blonde 100ml	<b>8142</b>
9.3 Very Light Golden Blonde 100ml	<b>8150</b>
<b>NATURAL GOLDEN ASH</b>	
8.13 Light Natural Ash Golden Blonde 100ml	<b>8141</b>
9.13 Very Light Natural Ash Golden Blonde 100ml	<b>8149</b>
<b>COPPER</b>	
5.4 Light Copper Brown 100ml	<b>8115</b>
6.4 Dark Copper Blonde 100ml	<b>8125</b>
<b>COPPER INTENSE</b>	
7.44 Medium Intense Copper Blonde 100ml	<b>8135</b>
8.44 Light Intense Copper Blonde 100ml	<b>8143</b>



<b>COPPER GOLDEN</b>	
6.43 Dark Copper Golden Blonde 100ml	<b>8126</b>
7.43 Medium Copper Golden Blonde 100ml	<b>8134</b>
<b>VIOLET</b>	
5.22 Light Intense Violet Brown 100ml	<b>8113</b>
8.2 Light Violet Blonde 100ml	<b>10780</b>
9.2 Very Light Violet Blonde 100ml	<b>10781</b>
10.2 Lightest Violet Blonde 100ml	<b>10782</b>
<b>MAHOGANY</b>	
4.5 Medium Mahogany Brown 100ml	<b>8106</b>
5.5 Light Mahogany Brown 100ml	<b>8117</b>
6.55 Dark Intense Mahogany Blonde 100ml	<b>8127</b>
<b>ABSOLUTE RED</b>	
4.62 Medium Red Violet Brown 100ml	<b>8107</b>
5.66 Light Intense Red Brown 100ml	<b>8118</b>
8.62 Light Red Violet Blonde 100ml	<b>8144</b>
6.666 Special Red 6 100ml	<b>16713</b>
7.666 Special Red 7 100ml	<b>16662</b>
8.666 Special Red 8 100ml	<b>16664</b>
<b>CHOCOLATE</b>	
4 Coffee 100ml	<b>16702</b>
5 Choc Dark Chocolate 100ml	<b>16703</b>
6 Choc Milk Chocolate 100ml	<b>16704</b>
<b>BLONDE BOOST</b>	
0.00 Blonde Boost 100ml	<b>8092</b>

<b>SUPER BLONDES</b>	
12.0 Natural Scandinavian Blonde 100ml	<b>8099</b>
12.01 Ice Ash Scandinavian Blonde 100ml	<b>16667</b>
12.10 Intense Ash Scandinavian Blonde 100ml	<b>16668</b>
12.11 Silver Scandinavian Blonde 100ml	<b>16669</b>
12.12 Pearl Scandinavian Blonde 100ml	<b>16670</b>
12.2 Violet Scandinavian Blonde 100ml	<b>16403</b>
12.21 Iris Scandinavian Blonde 100ml	<b>16671</b>
12.25 Violet Mahogany Scandinavian Blonde 100ml	<b>16672</b>
12.32 Beige Scandinavian Blonde 100ml	<b>16700</b>
12.62 Pink Scandinavian Blonde 100ml	<b>16701</b>
<b>COLOR CORRECTORS</b>	
Blue Corrector 100ml	<b>8153</b>
Red Corrector 100ml	<b>8154</b>
Yellow Corrector 100ml	<b>8155</b>
<b>COLOR INTENSIFIERS</b>	
Pearl Intensifier 100ml	<b>10786</b>
Silver Intensifier 100ml	<b>10787</b>
Violet Intensifier 100ml	<b>10788</b>
<b>GREY METALLICS</b>	
Dark Anthracite 100ml	<b>13837</b>
Medium Graphite 100ml	<b>13838</b>
Light Aluminium 100ml	<b>13839</b>
<b>PASTEL METALLICS</b>	
Apricot 100ml	<b>14484</b>
Strawberry 100ml	<b>14485</b>
Lilac 100ml	<b>14486</b>
Aquamarine 100ml	<b>14487</b>
Ice 100ml	<b>14488</b>

OSMO IKON Tuft Color Shade Guide Chart with 96 Shades  
Latest revised tuft shade guide with new IKON colors, with level finder  
**16710**

OSMO IKON Technical Manual  
**18252**



**IKON Cream Developers**

The perfect complement to OSMO IKON Permanent Colour, as the developer deeply penetrates the hair fibre for maximum saturation of vibrant color.  
1 Litre



5 Volume 16568      10 Volume 8156      20 Volume 8157      30 Volume 8158      40 Volume 8159

**IKON Dust-Free Bleach**

Power Lift Bleach, 500g  
Blue 8151



White 8152



**IKON Hi-Lift**

What is Hi-Lift tint?

Hi-Lift tint is for those clients who refuse to bleach their hair. Still a permanent hair dye, but works differently because of its unique formula. Hi-Lift colors contain more ammonia, more dye pigment, & are mixed with a double ratio of 40 Volume Cream Developer.

Hi-Lifts are the booster rockets in your hair color arsenal. They are the strongest colors in your palette, giving the maximum amount of lightening & tonal deposit. These magic colors are not bleach, as bleach will lighten the hair, but will have no tonal refining capabilities.

Mixing ratio - 1:1.5

Mix Hi-Lift with 10 Vol, 20 Vol or 30 Vol depending on how much lift is needed. Has a processing time of 35-45 minutes.

Features & Benefits:

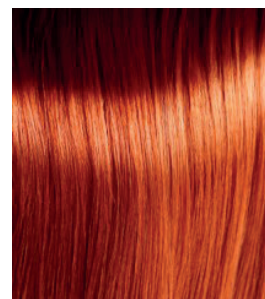
- Can be used over tint - hi-lifts cut through tint where normal reds will not
- Achieves maximum lift without the need for bleach
- High levels of pigment deliver intense, rich & vibrant results
- Higher amount of ammonia for supreme lightening levels
- Can be used on a darker level to create a vibrant red
- Can be added to other reds in the range as a booster
- Range includes 3 rich & wearable shades, all in 100ml tubes



Red 17729



Violet Red 17730



Copper Red 17731

**IKON Pastel Metallics Collection**

Pastel Metallics Collection

A range of 5 gorgeous, fashion-led pastel metallic shades that can be applied direct for intense results or diluted for beautiful watercolor effects.

Mixing Ratios:  
For intense reflect: 1:1.5  
For slight reflex: 1:3  
For watercolor reflex: 1:4  
100ml



Apricot 14484



Strawberry 14485



Lilac 14486



Aquamarine 14487



Ice 14488



#ASKFORWELLA

INTRODUCING  
**OUR PUREST  
COLOR EVER**

PERMANENT COLOR WITH **ME+** TECHNOLOGY

» PURE, BALANCED COLOR RESULTS WITH NATURAL DEPTH AND SHINE.



## KOLESTON PERFECT ME+ All Tubes 60ml

**PURE NATURALS: PURE**

10/0	Lightest Blonde	15550
9/0	Very Light Blonde	15540
8/0	Light Blonde	15484
7/0	Medium Blonde	15520
6/0	Dark Blonde	15506
5/0	Light Brown	15496
4/0	Medium Brown	15486
3/0	Dark Brown	15489
2/0	Black	15487


**PURE NATURALS: RESISTANT COVER**

99/0	Very Light Blonde Intensive	15543
88/0	Light Blonde Intensive	15531
77/0	Medium Blonde Intensive	15521
66/0	Dark Blonde Intensive	15508
55/0	Light Brown Intensive	15497
44/0	Medium Brown Intensive	15492
33/0	Dark Brown Intensive	15490

**PURE NATURALS: WARM**

10/04	Lightest Natural Red Blond	15552
10/03	Lightest Blonde Natural Gold	15551
9/04	Very Light Natural Red Blonde	15542
9/03	Very Light Natural Gold Blonde	15541
8/07	Light Blonde Natural Brown	15530
6/07	Dark Blonde Natural Brown	15507
4/07	Medium Brown Natural Brown	15491

**RICH NATURALS: COOL**

10/97	Lightest Blonde Cendre Brown	15560
10/96	Lightest Blonde Cendre Violet	15559
10/95	Lightest Blonde Cendre Mahogany	15064
10/86	Lightest Blonde Pearl Violet	15557
10/8	Lightest Blonde Pearl	15556
10/38	Lightest Blonde Golden Pearl	15555
10/16	Lightest Blonde Ash Violet	15554
10/1	Lightest Blonde Ash	15553
9/97	Very Light Blonde Cendre Brown	15549
9/96	Very Light Blonde Cendre Violet	15548
9/81	Very Light Blonde Pearl Ash	15062
9/8	Very Light Blonde Pearl	15547
9/16	Very Light Blonde Ash Violet	15545
9/1	Very Light Blonde Ash	15544
8/97	Light Blonde Cendre Brown	15539
8/96	Light Blonde Cendre Violet	15538
8/2	Matt Light Blonde	15533
8/1	Light Blonde Ash	15532
4/3	Medium Brown Gold	 16678

**RICH NATURALS: COOL**

7/18	Medium Blonde Ash Pearl	15061
7/17	Medium Blonde Ash Brown	15523
7/1	Medium Blonde Ash	15522
6/97	Dark Blonde Cendre Brown	15511
6/2	Matt Dark Blonde	15510
6/1	Dark Blonde Ash	15509
5/2	Light Brown Matt	15499
5/1	Light Brown Ash	15498
2/8	Black Pearl	15488

**RICH NATURALS: WARM**

9/31	Very Light Blonde Gold Ash	15546
7/31	Medium Blonde Gold Ash	15524

**VIBRANT REDS: COOL**

8/45	Light Blonde Red Mahogany	15535
7/45	Medium Blonde Red Mahogany	15525
66/46	Dark Blonde Intensive Red Violet Intensive	15571
6/45	Dark Blonde Red Mahogany	15515
6/41	Dark Blonde Red Ash	15513
55/66	Light Brown Intensive Violet Intensive	15569
55/65	Light Brown Intensive Violet Mahogany Intensive	15568
55/46	Light Brown Intensive Red Violet Intensive	15567
5/5	Light Brown Mahogany	15501
5/41	Light Brown Red Ash	15500
5/43	Light Blonde Red Gold	 16679
44/66	Medium Brown Intensive Violet Intensive	15566
44/65	Medium Brown Intensive Violet Mahogany Intensive	15565
44/55	Medium Brown Intensive Mahogany Intensive	15564
33/66	Intensive Dark Brown Intensive Violet	15562
33/55	Dark Brown Intensive	15561

**VIBRANT REDS: WARM**

8/43	Light Blonde Red Gold	15534
77/43	Medium Blonde Intensive Red Gold Intensive	15572
7/47	Medium Blonde Red Brown	15526
66/44	Dark Blonde Intensive Red Intensive	15570
6/43	Dark Blonde Red Gold	15514
6/34	Dark Blonde Golden Red	15512
44/44	Medium Brown Intensive Red Intensive	15563
99/44	Very Light Blonde Intensive Red Intensive	 16677

**DEEP BROWNS: COOL**

7/71	Medium Blonde Brown Ash	15528
6/75	Dark Blonde Brown Mahogany	15518
6/71	Dark Blonde Brown Ash	15517
5/75	Light Brown Mahogany	15504
5/71	Light Brown Ash	15503
4/75	Medium Brown Mahogany	15494
4/71	Medium Brown Ash	15493

**DEEP BROWNS: WARM**

8/74	Light Blonde Brown Red	15537
8/7	Light Blonde Brown	15536
7/77	Medium Blonde Brown Intensive	15529
7/7	Medium Blonde Brown	15527
6/77	Dark Blonde Brown Intensive	15519
6/7	Dark Blonde Brown	15516
5/77	Light Brown Brown Intensive	15505
5/7	Light Brown Brown	15502
4/77	Medium Brown Brown Intensive	15495

**SPECIAL BLONDES: COOL**

12/96	Special Blonde Cendre Violet	15588
12/89	Special Blonde Pearl Cendre	15587
12/81	Special Blonde Pearl Ash	15586
12/61	Special Blonde Violet Ash	15585
12/22	Special Blonde Matt Intensive	15584
12/11	Special Blonde Ash Intensive	15485
12/1	Special Blonde Ash	15583

**SPECIAL BLONDES: NATURAL**

12/0	Special Blonde Natural	15582
------	------------------------	-------

**SPECIAL MIX: COOL**

0/88	Blue Intensive	15581
0/66	Violet Intensive	15580
0/65	Violet Mahogany	15579
0/28	Matt Blue	15574
0/11	Ash Intensive	15573

**SPECIAL MIX: WARM**

0/44	Red Intensive	15578
0/43	Red Gold	15577
0/33	Gold Intensive	15576
0/30	Gold	15575



**BLEACHES**

7411	Blondor Multi-Blonde Bleach Powder 400g
------	---



**CREME DEVELOPERS - All Bottles 1 Litre**

15591	Welloxon Perfect 1.9% (6 Vol.)
15592	Welloxon Perfect 4% (13 Vol.)
7412	Welloxon Perfect 6% (20 Vol.)
7413	Welloxon Perfect 9% (30 Vol.)
7414	Welloxon Perfect 12% (40 Vol.)



WELLA MULTI BRAND TUFT COLOR CHART  
Contains swatches for KOLESTON ME+,  
COLOR TOUCH & ILLUMINA  
15972

## COLOR TOUCH - All Tubes 60ml

10/81	Lightest Pearl Ash Blonde	7761
10/6	Very Light Blonde Violet	7760
10/0	Lightest Blonde	7759
9/97	Very Light Blonde Cendre Brown	15596
9/16	Very Light Ash Violet Blonde	7763
9/01	Very Light Natural Ash Blonde	7762
8/81	Light Pearl Ash Blonde	7766
8/38	Light Gold Pearl Blonde	13718
8/3	Light Gold Blonde	7765
8/0	Light Blonde	7764
7/97	Medium Blonde Cendre Brown	15595
7/7	Medium Brunette Blonde	7771
7/43	Medium Red Gold Blonde	7770
7/3	Medium Gold Blonde	7769
7/03	Medium Natural Gold Blonde	7768
7/0	Medium Blonde	7767
6/77	Dark Intense Brunette Blonde	7779
6/75	Dark Brunette Mahogany Blonde	7778
6/71	Dark Brunette Ash Blonde	7777
6/7	Dark Brunette Blonde	7776
6/4	Dark Red Blonde	7774
6/37	Dark Gold Brunette Blonde	7773
6/0	Dark Blonde	7772
5/97	Light Brown Cendre Brown	15594
5/71	Light Brunette Ash Brown	7784
5/5	Light Mahogany Brown	7783
5/4	Light Red Brown	7782
5/3	Light Gold Brown	7781
5/0	Light Brown	7780
4/77	Medium Intense Brunette Blonde	7789
4/71	Medium Brunette Ash Brown	7788
4/0	Medium Mahogany	7785
3/66	Dark Intensive Violet Brown	7791
3/0	Dark Brown	7790
2/0	Black	7792



# COLOR TOUCH

## COLOR TOUCH INTENSIVE REDS

77/45	Medium Int Red Mahogany Blonde	7793
66/45	Dark Intense Red Mahogany Blonde	7794
66/44	Dark Intense Red Blonde	7795
55/65	Light Intense Violet Mahogany Brown	7796
55/54	Light Intense Mahogany Red Brown	7797

## COLOR TOUCH MIXTONES

0/68	Violet Pearl	7802
0/56	Mahogany Violet	7801
0/45	Red Mahogany	7800

## DEVELOPERS All Bottles 1 Litre

Touch Crème Lotion 1.9% (6 Vol.)	7431
Touch Intensive Crème Lotion 4% (13 Vol.)	7432

## BLONDOR FREELIGHTS

Powder  
400g  
**12969**  
Ideal for Balayage



Freelights  
Developer 1ltr  
20 Vol (6%)  
**12970**  
30 Vol (9%)  
**12971**  
40 Vol (12%)  
**12972**





## ILLUMINA COLOR - All Tubes 60ml

10/93	Light Cendre Gold Blonde	12032
10/69	Lightest Cendre Blonde	12004
10/38	Lightest Gold Pearl Blonde	12003
10/36	Lightest Gold Violet blonde	12002
10/1	Lightest Ash Blonde	12001
10/05	Lightest Natural Mahogany Blonde	12000
10/	Lightest Blonde	11999
9/7	Very Light Brown Blonde	12031
9/60	Very Light Violet Natural Blonde	12030
9/43	Very Light Red Gold Blonde	12029
9/03	Very Light Natural Gold Brown	12028
9/	Very Light Blonde	12027
8/69	Light Violet Cendre Blonde	12026
8/38	Light Gold Pearl Blonde	12025
8/37	Light Gold Brunette Blonde	13716
8/13	Light Ash Gold Blonde	13717
8/1	Light Ash Blonde	12024
8/05	Light Natural Mahogany Blonde	12023
8/	Light Brown	12022
7/81	Medium Pearl Ash Blonde	12021
7/7	Medium Brown Blonde	12020
7/43	Medium Red Gold Blonde	12019
7/35	Medium Gold Mahogany Blonde	12018
7/31	Med Gold Ash Blonde	12017
7/3	Medium Gold Blonde	12016
7/	Medium Blonde	12015
6/76	Dark Brown Violet Blonde	12014
6/37	Dark Gold Brunette Blonde	13715
6/19	Dark Ash Cendre Blonde	12013
6/16	Dark Ash Violet Brown	12012
6/	Dark Blonde	12011
5/81	Light Pearl Ash Brown	12010
5/7	Light Brown Brown	12009
5/43	Light Red Gold Brown	12008
5/35	Light Gold Mahogany Brown	12007
5/02	Light Natural Matt Brown	15593
5/	Light Brown	12006
4/	Medium Brown	12005





# 10 minuti EXPRESS



## A REVOLUTION in the world of coloring...

The modern permanent color solution for modern color clients.

Clients are increasingly hesitant to spend much time in a salon. They are also increasingly more concerned about the ingredients used in coloring products, demanding safer & friendlier ingredients, as well as more compassionate manufacturing. 21 VENTUNO 10minuti Express is the ultra-fast coloring solution for current times, & is perfect for the health & environmentally-conscious client.

### A permanent hair coloring kit with three major advantages:

1. Ultra-fast & non-progressive processing time of 10 minutes, instead of the usual lengthy 40 - 45 minutes.
2. Available in kit form, with everything needed in one box, ideal for use in the salon and/or selling to clients for use at home.
3. Formulated with safety in mind - vegan, free-from usual undesirable ingredients & dermatologically tested for maximum gentleness.

A range of 16 perfectly calibrated, ultra-fast & non-progressive shades for long-lasting results & perfect, uniform coverage, with lightening up to 4 tones. Unleash the power of concentrated pigments in just 10 minutes. Thoroughly tested both in vivo & in vitro, dermatologically tested to ensure optimal skin tolerability.

### Benefits for the salon:

- Quicker processing time for accelerated productivity
- Color more clients in a day - color & style in less than an hour
- Covers 100% of white & grey hair
- Easy application & non-progressive processing
- A trusted, safe & high quality color system for clients to use at home
- Non-Progressive: Old technology express colors have the flaw of being progressive, where color continuously darkens if left on for too long. 10minuti Express 21 VENTUNO is non-progressive color.

### Active Ingredients:

**TAU PLEX** - Improves hair elasticity by restoring natural physiology. Hair is more resistant to breakage, preserving its cuticular structure, improving shine in the process. Color is more uniform over the entire length, allowing for 100% grey coverage with lasting color.

**Amino Acid Mix** - Amino acid mix of vegetable origin with restructuring, repairing & reinforcing features of keratin. A vegan friendly mix that nourishes & replenishes the hair.

The first sustainable & fast color system. Ecological, sustainable, vegan & safe.

Free from Gluten, Parabens, Silicones, MEA, Phosphate, Formaldehyde & SLS/SLES.

### What's in the kit?

- 1 x 60ml tube 10 minute express permanent color
- 1 x 60ml 20 volume peroxide in shaker bottle with removable dispensing spout
- 2 x 15ml Post Color Restructuring Mask sachets
- 1 x 15ml Velvety Hair Serum sachet
- Instructions

Color Printed Chart, 16 Colors  
Compact color chart with printed swatches.  
17451

