

# Combs

WAHL

JAGUAR

Krest

GOLDILOCKS

OLIVIA GARDEN

diane  
FROMM

Wet  
brush-pro

TRIUMPH Master

pro  
tip

Cleopatra

SINCE 1856  
HERCULES  
SÄGEMANN  
GERMAN MANUFACTURED

comair  
GERMANY | BALDWIN ACCESSORIES

Hair PRO

PEGASUS  
HARD RUBBER COMBS

When performing chemical treatments & using styling tools, hair is at its most vulnerable & can easily break. If the incorrect comb is used, the rigid teeth of regular/carbon combs can scrape & break the hair strand.

Presenting FLEXINITE Smart Comb Technology, whose teeth are seamless, causing no damage & flexible movement through hair. When cool, the FLEXINITE regains its original shape. It is light, washable & incredibly strong.



Tail Comb  
13693



Wide Tail  
13694



Wide Tail, Long  
13695



Pin Tail  
13696



Pin Tail, Fine  
13697



Cutting Comb, 7 inch  
13699



Handle Comb  
13700



Afro Large  
13701



Large Mesh  
13702



Curved Handle  
13703



Gents  
13704



Ladies  
13705



Cutting Comb, 8.0 inch  
13706



Trimmer Cutting Comb  
13707

**BLACK DIAMOND DELRIN COMBS**

Black Diamond combs are made from DuPont Delrin, which is an alternative to hard rubber combs. Delrin provides great heat resistance but unlike hard rubber Delrin will not become brittle with age. These combs are durable, chemical resistant & anti-static with smooth teeth & flexibility.



Long stylist  
8.5 inch  
1068



Stylist  
7 inch  
1071



Tail  
1070



Pintail  
1069



Master Waver  
8.5 inch  
5275



Pintail Teaser  
8.5 inch  
5274



Shampoo Rake  
9 inch  
5272



Vent Stylist  
7 inch  
5273



Cutting  
7.0 inch  
1700



Barber  
7.5 inch  
1709



Cutting  
8.5 inch  
1711



Large Ladies  
2308



Turbo Cut  
1710



Lady Star  
1698



Styling Star  
1701



Large Mesh  
1699



Fine Teeth Pin  
1704



Medium Teeth Pin  
1705



Wide Teeth Pin  
1706



Fine Teeth Tail  
1702



Medium Teeth Tail  
1703



Wide Teeth Tail  
1708



Teasing  
1707



Long Tail  
4758



Afro Small  
1695

HERCULES SÄGEMANN CARBON LINE

Heat-resistant, ideal for ironing.



Cutting Comb  
7 inch curved  
5762



Cutting Comb  
7 inch, grey  
16474 **NEW!**

STARFLITE - Anti-static, flexible & durable



Cutting  
1073



Long Stylist  
1074



Tail  
1076



Pintail  
1075



Vent Stylist  
7 inch  
5271

Hair Thinning Comb  
With blade insert & spare blade.  
Allows you to thin out hair with  
the advantage of a comb.  
7 inch  
12091



Spare blades  
4 pieces  
12560

Durable, affordable & uncompromising quality.



SL5 Long cutting  
8.5 inch  
1719



SL6 universal  
7.5 inch  
1720



SL8 Even Teeth  
7.5 inch  
1714



SL7  
8 inch tail  
5765



SL3 Cutting  
7 inch  
1716



SL13 Pin Tail  
8.5 inch  
1718



SL2 Styling Wide/Fine  
7.5 inch  
1715

TRIUMPH MASTER COMBS - Durable plastic, uncompromising in quality. Made in Germany



Mesh comb  
7 inch  
6010



Teaser  
Metal Pins  
3938



Clipper comb  
7643  
4883



Coarse/fine teeth  
7 inch  
4915



Cutting Comb  
8 inch  
4916



Cutting Comb  
Fine 7.5 inch  
4917



Fork Comb,  
S/Steel Pins  
8 inch  
4920



Large Mesh &  
Drying Comb  
7.5 inch  
4919



Handle Comb  
8.5 inch  
4923



Handle  
4918



Needle Tail Comb  
8 inch  
4922



Tail Comb 8 inch  
4921



Teasing Comb  
8.5 inch  
4924

KREST



XL Foil Comb  
8.75 inch  
16404



XL Pin set of 2  
1652



Teaser 7.75 inch  
1653

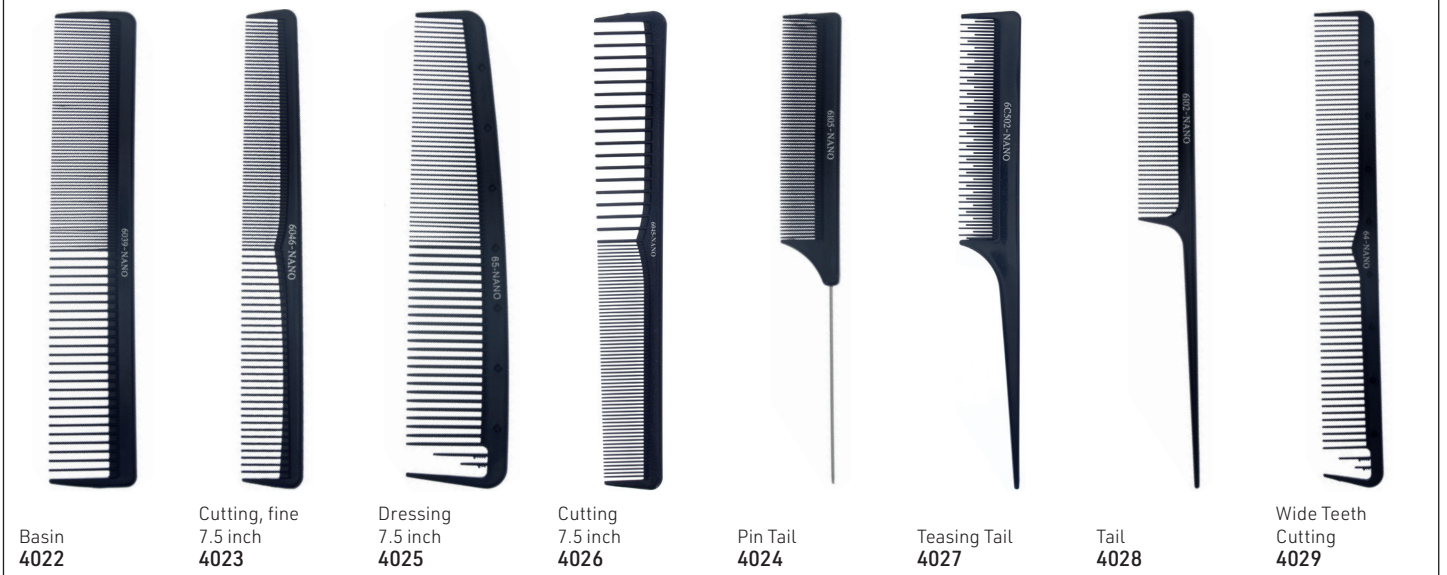


Clipper Comb  
1654



NANO TECHNOLOGY COMBS

Professional Nano Technology Comb with flexibility, antimicrobial technology & chemical-resistance. Excellent quality & durable design for sculpted looks.



## NANO IONIC COMBS

Anti-static, with flexibility. Help hair retain moisture & shine, seamless surface inhibiting bacterial growth.



Metal lifter  
7.5 inch  
4030



Stylist comb  
7 inch  
4031



Pin Tail  
4032



Shampoo  
4033



Classic 7 inch  
4034



Cutting 7.5 inch  
4036



Cutting 8.5 inch  
4037



Tail  
4035

## GOLDILOCKS COMBS

# GOLDILOCKS®

Created for high-quality combing action for intricate hairstyles. Professional, durable comb for long-lasting use with high performance.



#8 Fork  
Teaser  
7.75 inch  
1651



#20 Cutting  
7 inch  
1644



#16 Long  
8.5 inch  
1642



#5 Tail, Fine  
1648



#4 Cutting  
7 inch  
1647



#25 Even  
teeth  
7 inch  
1645



#56 Pintail  
1650



#17 Styling  
7 inch  
1643



#30 Large,  
Even/Fine  
7 inch  
1646



#50 Barber  
1649

## COMAIR COMBS - Durable with uncompromising quality

**COMAIR**  
GERMANY | SALON-ACCESSORIES



#610  
1131



#202  
1135



#349  
1128



#201  
1134



#500  
1132



#105  
1127



#3839  
1133



#MKII  
1129



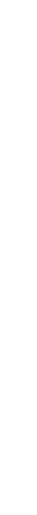
#400  
1126



#401  
1125



#501  
1130



#3111  
2616

**PIVOT COMBS**

Cutting 7 inch  
**2375**

Tail  
**2374**

Wide Tail  
**2376**

Ladies 9 inch  
**4283**

**HAIRPRO COMBS**



Cutting  
18.3x2.5cm  
**15347**

Tail  
21.5cmx5cm  
**15348**

Pin Tail  
22.5cmx2.5cm  
**15349**

Cutting, Long  
22cmx3cm  
**15351**

Cutting, X-Long  
23.5cmx3cm  
**15352**

**ALUMINIUM COMBS**

Aluminium  
18cm  
**15335**

Aluminium  
21.5cm  
**15336**

**CARBON COMBS**

Shampoo comb  
with crystals  
**5768**

Carbon, heat-  
resistant tail comb  
**13978**

**MEN'S COMBS**

154mm x 27mm  
**12169**

130mm x 28mm  
**12168**

The Beard Pro  
Beard comb that shapes your neck &  
cheek line in just minutes for the ideal  
beard shape.  
**12253**



**JORGEN HEAT-RESISTANT COMBS**

Features blended polymers which have a heat resistance of up to 200°C, making it perfect to be used with hot tools.

Tail comb, metal  
**11058**

Tail comb  
**11059**

Cutting comb  
7 inch  
**11060**

Cutting comb  
8.5 inch  
**11063**

Straightening Tension Comb  
**12105**



The Comb Cleaner™ by Olivia Garden  
Removes unwanted residue & build-  
up from any comb in seconds.



Set of 6  
**3843**



Ionic combs made of high-quality plastic. Ions help the hair to absorb moisture & give it a healthy, cared-for shine. Anti-static, heat-resistant & anti-bacterial.



Cutting Comb 7.25 inch <b>6483</b>	Handle Comb 8 inch <b>6486</b>	Tail Comb 8.25 inch <b>6489</b>	Barber Comb 7.25 inch <b>6484</b>	Cutting Comb 6.75 inch <b>6487</b>	Cutting Comb 8.5 inch <b>6485</b>	Cutting Comb 7.25 inch <b>6488</b>	Fork Comb 7.5 inch <b>6491</b>	Pin Tail Comb 8.75 inch <b>6490</b>
--	--------------------------------------	---------------------------------------	---	--	---	--	--------------------------------------	---

JAGUAR PROFESSIONAL COMB SETS - With rounded teeth to protect hair & scalp. Anti-static, heat-resistant & anti-bacterial.

A-Line Ionic Comb Set  
Purple, 9 combs  
**4362**



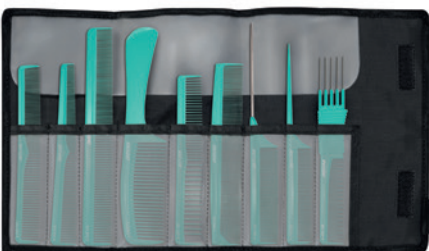
A-Line Ionic Comb Set  
Black, 9 combs  
**4266**



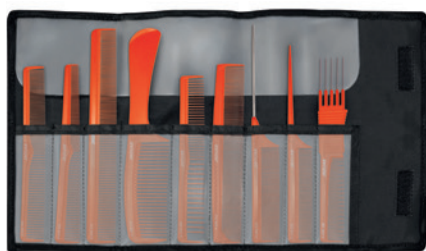
A-Line Ionic Comb Set  
Pink, 9 combs  
**6389**



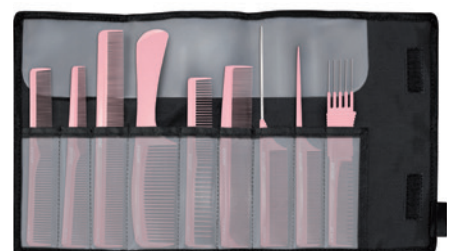
A-Line Ionic Comb Set  
Mint, 9 combs  
**14375**



A-Line Ionic Comb Set  
Orange, 9 combs  
**14376**



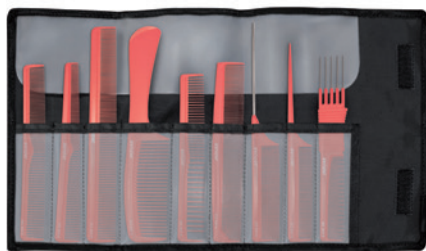
A-Line Ionic Comb Set  
Rose, 9 combs  
**15671**



A-Line Ionic Comb Set  
White, 9 combs  
**15672**



A-Line Ionic Comb Set  
Coral, 9 combs  
**16498**



A-Line Carbon Set, 9 combs  
**15673**

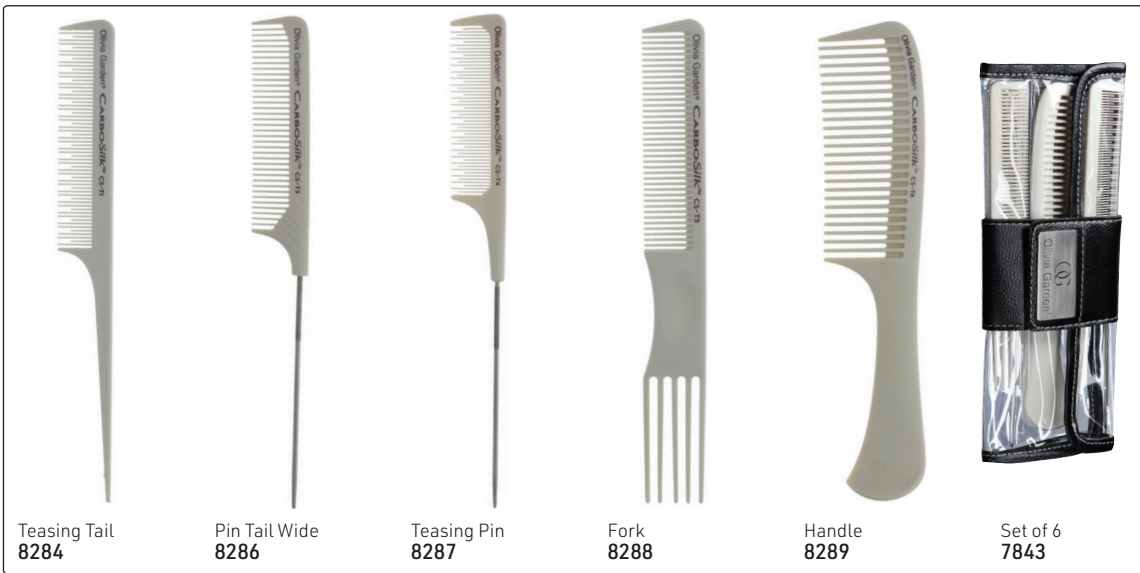




**OLIVIA GARDEN CARBOSILK® HEAT RESISTANT COMBS**



Very rigid combs that glide smoothly through the hair & release negative ions for a sleeker & shinier cuticle. Lightweight, anti-static, unbreakable, heat-resistant to 230°C.



Olivia Garden Healthy Hair® Bamboo Collection



Curved Handle  
11143

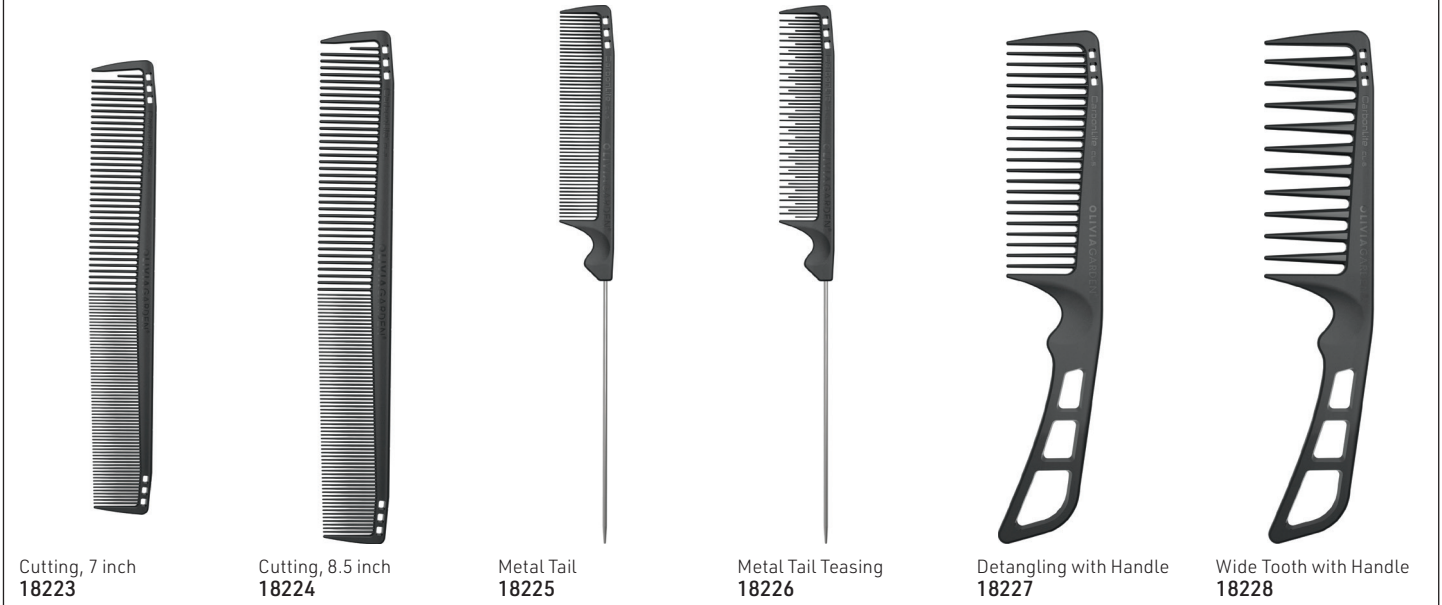


Straight Handle  
11142

**OLIVIA GARDEN CARBONLITE™ - High quality carbon combs engineered for epic performance**



• High quality carbon • Strong & durable material resists breakage • Heat resistance up to 230°C • Anti-static • Chemical-proof & stain-proof • Ultra-light • Smooth body & seamless teeth design • Entirely snag-free when gliding through hair • Rounded teeth glide through the hair for easy detangling & no hair breakage • Patented grip design



Black/Bone Thick Rat Tail Comb 9.25 inch  
16592



Steel Fan Pick Comb With coated tips. Add ultimate volume & lift. 7.5 inch  
16593



Extra Long Pin Tail Comb Ideal for use with foils to separate & section. 9.75 inch  
16594



Economical Styling Comb, 7 inch  
16595



Economical Tail Comb, 8.5 inch  
16596



Flat-Top Clipper Comb Black, 9.5 Inch  
5604



Large Rake Comb Black  
5607



Fan Pick Comb with Metal Pins, Black  
12412



XL Steel Lift Comb with Metal Pins, Black  
12413



Cutting Comb 7 inch  
9673



10 Piece Bone Comb Set with Pouch  
4725



10 Piece Assorted Colors Comb Set with Pouch  
7343



SALON ELEMENTS COMBS

Salon Elements Frosty Tail 9 inch, economical, assorted  
4415



Salon Elements Wide Tail 9 inch, assorted  
4418



9 Piece Ionic Comb Set with Pouch  
4987



9 Piece Comb Set With Pouch, Black  
1141



7 Piece Carbon Comb Set with Pouch  
7824



9 Piece Carbon Comb Set with  
Black Pouch  
6320



ProTip 6 Piece College Kit, Pink  
7369



ProTip 5 Piece Comb Tool Wallet  
7370



ProTip 6 Piece College Kit, Blue  
7368



10 Piece Comb & Pop Up Brush Set, Pink  
9493



9 Piece Comb Set, Black  
15346



Candy 7 Piece Sets  
Pink 10656  
Green 10657  
Purple 10658



Made from carbonite material: ultra-lightweight & super-strong. Heat-proof, ideal for use with hot tools. Ideal for creating long-lasting styles.



Dresser Comb  
14337



Cutting Comb  
14338



Metal Tail Comb  
14339



Tail Comb  
14340



Dresser Comb with Hook  
14341



Dresser Comb Wide Tooth  
14342

THE WET COMB 2

Precision styling - the perfect degree of firmness for optimal performance. High heat & chemical-resistance. Designed to withstand heat up to 240°C. Works great on wet or dry hair. Anti-static, smooth finishing, ultra-lightweight.



Black  
10578



Blue  
10579



Violet  
10580



Silver  
10581



Red  
10582



Lilac  
10583



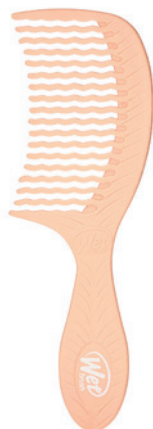
Green  
10585

WETBRUSH GO GREEN™ TREATMENT & COMB

Eco-friendly combs for those who prefer detangling with a comb. Teeth are infused with natural oil & mineral treatments for specific hair needs. Made from biodegradable & sustainable plant-based bioplastic derived from corn starch. Oils & minerals are distributed during combing, delivering a rich supply of nutrients to treat, moisturize & repair the hair. Pick the treatment for the specific hair need. WaveTooth™ delivers pain-free detangling.



Tea Tree Oil - Improves scalp health  
17086



Coconut Oil - Moisturizes for soft, smooth hair  
17087



Charcoal - Purifies & detoxes hair  
17088



THE WET COMB



WaveTooth™ technology distributes hair evenly across teeth to prevent clumping, snagging & breakage. Works great on wet or dry hair.



Black  
9475

Green  
9476

WETBRUSH PRO DETANGLING COMB



Pro Detangling Comb - WaveTooth™ design prevents clumping & effortlessly glides through tangles. EasyGrip™ handle provides secure grip even with wet hands.



Black  
15868

Pink  
15869

Purple  
15870

WETBRUSH COMBS



Detangling comb with the perfect degree of firmness for optimal performance with high heat & chemical-resistance.



Moroccan Powder Blue  
14532

Moroccan Pink  
14533

ROTATING COMB FOR CURLY HAIR

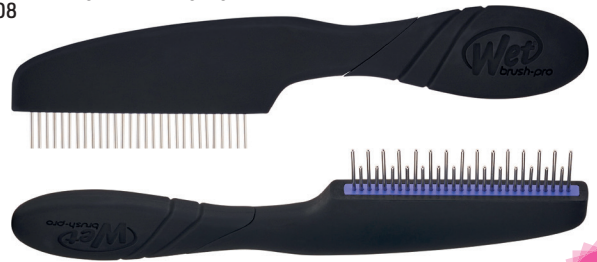


Self-adjusting comb to detangle dense, coarse hair types. Safe for use with treatments. Unique rotating tooth comb features teeth that rotate for easy detangling on the tightest of curls.

Varied teeth lengths detangle even the coarsest of hair with little effort. Longer teeth get closer to the roots, with shorter bristles detangling hair further down the shaft.

Teeth rotate 360° to reduce hair tugging, gliding through any troublesome tangle. Rounded teeth will not snag or pull coarse hair. Non-slip grip handle for comfortable & gentle detangling.

17208



TRIPLE EDGE STYLER FOR EDGES



TRIPLE EDGE BRUSH & COMB STYLER FOR EDGES

Multi-functional edge brush for keeping the hairline & fly-aways in place. Keeps edges & fringes smooth for natural, relaxed & braided styles. Create detail & definition. Nylon bristles minimize damage & snagging while styling. Two-sided comb can handle multiple hair thicknesses: wide tooth side detangles, & fine tooth side for fly-away strands. Sectioning pick at end of styler for added ease. Innovative toothbrush design allows for detailed styling with minimal effort. Sleek design for maximum dexterity & precision while styling. Non-slip grip handle for comfortable & gentle styling.

17210



WIDE TOOTH DETANGLING COMB FOR CURLY HAIR



Oversized wide tooth comb for gentle detangling, ideal for any hair length or texture. Safe for use with treatments. Smooth, non-scratching teeth reach right to the scalp & gently detangle hair without damage or shedding.

Elongated teeth get closer to the roots. Wide spaced teeth detangle even dense curls. Teeth are chemical & heat resistant. Non-slip grip handle for comfortable & gentle styling.

17212



**SHAMPOO COMBS**

Shampoo Combs  
36 pieces  
8890



Detangling Combs  
36 pieces  
8891



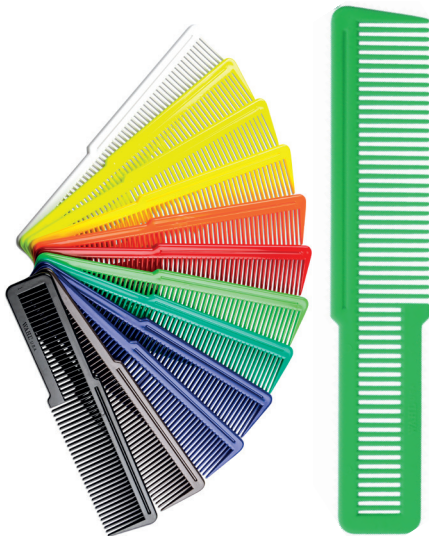
Rake Combs  
36 pieces  
8892



**WAHL**



Wahl Clipper Comb, Assorted Colors  
11436



Teasing Comb, Assorted Colors  
24 pieces  
11161



Double-Sided Teasing Comb  
Assorted Colors  
11432



**ASSORTED COMBS**

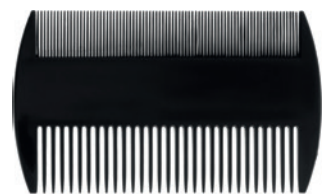
Highlight & Coloring Comb, White  
2215



Wet Comb, Double-Dipped  
1400



Lice Comb, Assorted Colors  
2047



Level Cutting Comb for Angled Cutting, 205mm, Black  
8889



Large Detangler, Double-Dipped, Black  
1405



Double Row  
1137



ASSORTED COMBS

Mini Comb, Assorted Colors  
1139



Color Line Mesh Comb  
3690



Flattopper Comb with Bubble Leveler,  
Black  
11233



2 Part Highlighting Comb  
4372



Jumbo Basin Comb  
1140



Diane 3-in-1 Lice Tool  
Lice comb, brush & magnifying glass.  
Comb removes lice & nits. Use brush  
to ensure comb teeth are clean.  
11501



Tail Comb with Extra Long Handle,  
Black  
2218



Bone Handle  
2220



3-in-1 Styler Comb, Black  
2730



Afro Comb, Black  
1136



Basin Tortoise Shell Comb  
2224



Convex Comb for Clipper Cutting, Black  
3084



Comb Detangler, Assorted Colors  
2219



Volume Double-Dipped Comb, Black  
1410



Large Rake Comb, Black  
1138



Mini Vent On Keyring  
Assorted Colors  
2732

