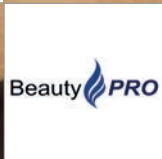
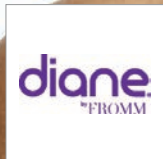
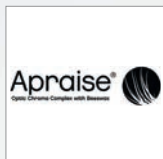


# Brows & Lashes





It's time for performance cosmetics that really work. Enhance your features for real lashes & brows with a safe & effective formula. Backed by clinical studies, Grande Cosmetics has real results for real people. An award-winning product range with never-seen-before results. Achieved a 5-star rating with cosmetics giant Sephora in the respective categories.

**GrandeLASH-MD**

2.0ml

- Created with blend of vitamins, antioxidants & amino acids for guaranteed longer & thicker-looking lashes, especially for short, thinning, brittle & damaged lashes
- Safe, easy, effective, vegan, cruelty-free, lash extension safe
- See results in as little as 4 weeks & full results in 3 months
- Apply like a liquid eyeliner on upper lashes at night
- Each serum lasts approximately 3 months

**14194**



**GrandeLINER - Lash boosting eyeliner**

1.5ml

- Long-wearing black liquid eyeliner infused with GrandeLASH-MD to enhance natural lashes in 4-6 weeks
- Precision felt-tip brush delivers product to eye line in one steady stroke for a precise, smudge-proof line.
- Promotes longer & thicker-looking lashes after long-term use
- Waterproof
- Rich black
- Use every morning on clean, dry skin, applying to lash line from inner to outer corner

**14193**



**GrandeLASH-MD Starter Kit**

12 Pieces

Includes 12 GrandeLASH-MD, 2.0ml

Display for retail

Holds:

12 pieces & 1 tester, poster & 40 brochures

Display shows benefits & information about the brand

**14201**



**GrandeBROW-FILL**

4g

- Made in Italy
- Tinted brush-on brow gel infused with fibers & peptides that dries instantly to allow for multiple layers
- Adheres to most fine brow hairs, leaving them fuller & more defined after single use
- Long-wear formula evenly coats brows with natural tint & fills sparse areas with a natural finish
- Allows for sculpting & defining arches for a bold brow look lasting all day
- Coat applicator, wipe off excess, brush onto eyebrows in upward strokes to shape & build

Light **14195**

Dark **14196**



**GrandePRIMER**

9.5g

- A white pre-mascara that helps thicken & lengthen lashes
- It preps your lashes for any further mascara application & boosts their effectiveness
- Apply generously to eyelashes in upward motion like mascara from base to tips

**14432**



**GrandeMASCARA**

6g

- Condition while you coat
- Rich-black, Italian mascara for extreme volume while nurturing & conditioning lashes with peptide-infused & natural wax formula
- Use to achieve an instant false-lash look that looks healthier & longer over time
- Build-able, water-resistant formula keeps lashes flexible & strong & is easy to remove
- Sweep from lash base to tip, applying multiple coats for volume
- Black

**14200**



**GrandeGLIDE**

0.25g

- Creamy, retractable brow pencil to define & shape brows in one easy step
- Buttery formula effortlessly glides on & blends out for the most natural look
- Twist until tip of pencil shows, apply along brow with light pressure in upward motion & brush through with built-in blender

Light **14197**

Medium **14198**

Dark **14199**



**GrandeBROW**

3.0ml

- Eyebrow-enhancing serum to promote fuller & thicker brows in 6-8 weeks & full results in 4 months
- Blend of vitamins, antioxidants & amino acids to condition brow hair for a healthy & restored look
- Unique soft-tip brush designed to deliver product to thinning, sparse, misshapen & over-plucked brows
- Each serum lasts approximately 4 months
- Apply to natural shape brow area at night

**14209**



GRANDE COSMETICS

Grande Brow Assembled Kit, 21 Pieces  
The comprehensive kit for fuller, thicker brows.

Ideal for retail

Includes:

- 3 x GrandeGLIDE Light
- 6 x GrandeGLIDE Medium
- 3 x GrandeGLIDE Dark
- 6 x GrandeBROW-FILL Light
- 3 x GrandeBROW-FILL Dark
- Testers
- 40 brochures
- Display to show benefits & information about the brand

14400



Bling Eyelash Curler  
14685



GrandeLIPS Hydrating Lip Plumper - 2.4ml

A high gloss, volumizing lip treatment with long-term hydrating benefits. Infused with a nourishing cocktail of Volulip™ & Hyaluronic Acid, this plumper instantly improves lip volume in 3-5 minutes & hydrates dry areas. Its clinically proven formula increases overall lip hydration by 51%, volume by 15%, softness by 11% & firmness by 13% in just 30 days of usage when applied twice daily. GrandeLIPS's unique cushion applicator easily wipes clean & combines effortlessly with other lip products.





Toasted Apricot  
14729

Cashmere Buff  
14730

Uptown Taupe  
14731

Spicy Mauve  
14732

Sunbaked Sedona  
14733

Dusty Taro  
14734

Gift Packs from Grande Cosmetics

Gift Glam

Includes:

- 1 x GrandeLASH-MD Serum 2ml
- 1 x GrandeMASCARA 6g
- 1 x Free Bling Eyelash Curler

15000



NEW!

Mascara Ornament

Includes:

- 1 x GrandeMASCARA 6g
- 1 x Free Eyelash Curler

15002



NEW!

Big Time Prime

Includes:

- 1 x GrandeMASCARA 6g
- 1 x GrandePRIMER 9.5g
- 1 x Free Bling Eyelash Curler

15001



NEW!

Lip Plumping Duo Ornament

Includes:

- 1 x GrandeLIPS Clear Gloss (full size) - 2.4ml
- 1 x GrandeLIPS Smoked Cherry (travel size)

15003



NEW!



1, 2, 3, .... We have LashLift! Introducing the ultimate boost for natural lashes, the HIVE® LashLift system. **Only for use by trained technicians.**

Take the beauty & volume of lashes into another stratosphere & create the effect of longer, lifted lashes. The LashLift system comprises of 3 liquid treatments: Lifting Crème (1), Treatment Lotion (2) & Conditioning Serum (3). When combined with HIVE® Lash Lifting Shields (A) & Bonding Serum (B), it creates everything required for a first class professional lash lift treatment.

An easy-to-follow 3 step journey to eyelashes that are out of this world! **1 - Lift, 2 - Treat, 3 - Condition**

**Step 1: HIVE® Lash Lifting Crème**

Applied to the base of the lashes, this highly effective crème, enhanced with Hydrolysed Silk & Vitamin B3, weakens the disulphide bonds in each hair, allowing them to be re-shaped & lifted around the contour of the shield. This creates maximum lift.

10 x 1.5ml sachets  
14971

**Step 2: HIVE® Lash Treatment Lotion**

Maintain, fix & hold the perfectly positioned & re-shaped lashes with the Lash Treatment Lotion (2). The smooth, silky lotion is applied to the same area as the Lash Lifting Crème (1), restoring the disulphide bonds in the expertly-crafted new shape.

10 x 1.5ml sachets  
14972

**Step 3: HIVE® Lash Conditioning Serum**

A fast-acting serum that moisturises & conditions the eyelashes to maintain the results for up to 6-8 weeks. Aloe Vera promotes smoothness & a healthy shine in the hair. The dual-functioning Conditioning Serum (3) gently, but effectively, removes any tint or bonding serum residue for a fantastic finish.

10 x 1.5ml sachets  
14973



**Lifting Shields**

Designed for use with the HIVE® LashLift system & available in 3 sizes, these silicone-based shields provide a unique contour to aid the re-shaping of natural lashes. The width of the Lifting Shields can be trimmed in length, enabling an absolutely perfect fit on the lash lid.

Small (10)  
14974

Medium (10)  
14975

Large (10)  
14976



**Bonding Serum 5ml**

Designed to adhere lashes to the contour of HIVE® Lash Lifting Shields, promoting the lifting & re-shaping results.

14977



**LashLift Tool**

14978



**HIVE® LashLift Starter Kit**

- Contains:
- Lifting Crème (10 x 1.5ml)
  - Treatment Lotion (10 x 1.5ml)
  - Conditioning Serum (10 x 1.5ml)
  - Lifting Shields - Small (10)
  - Lifting Shields - Medium (10)
  - Lifting Shields - Large (10)
  - Bonding Serum 5ml
  - Glue Rings (10)

14979



Lashes - Classic Individual lash trays

J Curl	B Curl	C Curl
<b>0.15 Thick</b>	<b>0.15 Thick</b>	<b>0.15 Thick</b>
8mm <b>13370</b>	8mm <b>13379</b>	8mm <b>13388</b>
9mm <b>13371</b>	9mm <b>13380</b>	9mm <b>13389</b>
10mm <b>13372</b>	10mm <b>13381</b>	10mm <b>13390</b>
11mm <b>13373</b>	11mm <b>13382</b>	11mm <b>13391</b>
12mm <b>13374</b>	12mm <b>13383</b>	12mm <b>13392</b>
13mm <b>13375</b>	13mm <b>13384</b>	13mm <b>13393</b>
14mm <b>13376</b>	14mm <b>13385</b>	14mm <b>13394</b>
<b>0.20 Thick</b>	<b>0.20 Thick</b>	<b>0.20 Thick</b>
8mm <b>13397</b>	8mm <b>13406</b>	8mm <b>13415</b>
9mm <b>13398</b>	9mm <b>13407</b>	9mm <b>13416</b>
10mm <b>13399</b>	10mm <b>13408</b>	10mm <b>13417</b>
11mm <b>13400</b>	11mm <b>13409</b>	11mm <b>13418</b>
12mm <b>13401</b>	12mm <b>13410</b>	12mm <b>13419</b>
13mm <b>13402</b>	13mm <b>13411</b>	13mm <b>13420</b>
14mm <b>13403</b>	14mm <b>13412</b>	14mm <b>13421</b>
<b>0.25 Thick</b>	<b>0.25 Thick</b>	<b>0.25 Thick</b>
8mm <b>13424</b>	8mm <b>13433</b>	8mm <b>13442</b>
9mm <b>13425</b>	9mm <b>13434</b>	9mm <b>13443</b>
10mm <b>13426</b>	10mm <b>13435</b>	10mm <b>13444</b>
11mm <b>13427</b>	11mm <b>13436</b>	11mm <b>13445</b>
12mm <b>13428</b>	12mm <b>13437</b>	12mm <b>13446</b>
13mm <b>13429</b>	13mm <b>13438</b>	13mm <b>13447</b>
14mm <b>13430</b>	14mm <b>13439</b>	14mm <b>13448</b>
25mm <b>13431</b>	25mm <b>13440</b>	25mm <b>13449</b>



B Curl	C Curl
<b>3D Volume Mixed Lash Tray</b>	<b>3D Volume Mixed Lash Tray</b>
<b>0.07 Thick</b>	<b>0.07 Thick</b>
7mm - 14mm <b>13482</b>	7mm - 14mm <b>13483</b>

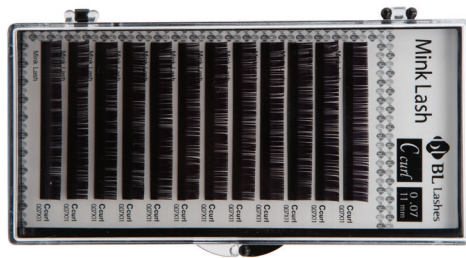
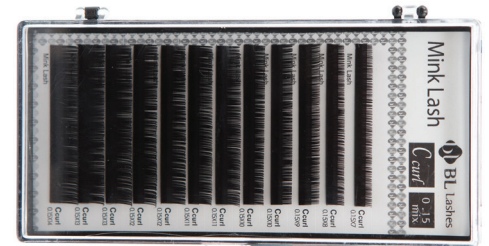


Classic Individual Lash Bags, 0.5g

J Curl	B Curl	C Curl
<b>0.15 Thick</b>	<b>0.15 Thick</b>	<b>0.15 Thick</b>
8mm <b>13859</b>	10mm <b>13877</b>	8mm <b>13894</b>
9mm <b>13860</b>	11mm <b>13878</b>	9mm <b>13895</b>
10mm <b>13861</b>	12mm <b>13879</b>	10mm <b>13896</b>
11mm <b>13862</b>		11mm <b>13897</b>
12mm <b>13863</b>		12mm <b>13898</b>
		13mm <b>13899</b>
<b>0.20 Thick</b>	<b>0.20 Thick</b>	<b>0.20 Thick</b>
8mm <b>13864</b>	8mm <b>13880</b>	8mm <b>13900</b>
9mm <b>13865</b>	9mm <b>13881</b>	9mm <b>13901</b>
10mm <b>13866</b>	10mm <b>13882</b>	10mm <b>13902</b>
11mm <b>13867</b>	11mm <b>13883</b>	11mm <b>13903</b>
12mm <b>13868</b>	12mm <b>13884</b>	12mm <b>13904</b>
13mm <b>13869</b>	13mm <b>13885</b>	
14mm <b>13870</b>	14mm <b>13886</b>	
<b>0.25 Thick</b>	<b>0.25 Thick</b>	<b>0.25 Thick</b>
8mm <b>13871</b>	8mm <b>13887</b>	8mm <b>13905</b>
9mm <b>13872</b>	9mm <b>13888</b>	9mm <b>13906</b>
10mm <b>13873</b>	10mm <b>13889</b>	10mm <b>13907</b>
11mm <b>13874</b>	11mm <b>13890</b>	11mm <b>13908</b>
12mm <b>13875</b>	12mm <b>13891</b>	12mm <b>13909</b>
14mm <b>13876</b>	13mm <b>13892</b>	13mm <b>13910</b>
	14mm <b>13893</b>	14mm <b>13911</b>



J Curl	B Curl	C Curl
<b>Classic Mixed Lash Tray</b>	<b>Classic Mixed Lash Tray</b>	<b>Classic Mixed Lash Tray</b>
<b>0.15 Thick</b>	<b>0.15 Thick</b>	<b>0.15 Thick</b>
7mm - 14mm <b>13451</b>	7mm - 14mm <b>13452</b>	7mm - 14mm <b>13453</b>
<b>0.20 Thick</b>	<b>0.20 Thick</b>	<b>0.20 Thick</b>
7mm - 14mm <b>13454</b>	7mm - 14mm <b>13455</b>	7mm - 14mm <b>13456</b>
<b>0.25 Thick</b>	<b>0.25 Thick</b>	<b>0.25 Thick</b>
7mm - 14mm <b>13457</b>	7mm - 14mm <b>13458</b>	7mm - 14mm <b>13459</b>
<b>B Curl</b>	<b>C Curl</b>	
<b>3D Volume Individual Lash Tray</b>	<b>3D Volume Individual Lash Tray</b>	
<b>0.07 Thick</b>	<b>0.07 Thick</b>	
8mm <b>13468</b>	8mm <b>13475</b>	
9mm <b>13469</b>	9mm <b>13476</b>	
10mm <b>13470</b>	10mm <b>13477</b>	
11mm <b>13471</b>	11mm <b>13478</b>	
12mm <b>13472</b>	12mm <b>13479</b>	
13mm <b>13473</b>	13mm <b>13480</b>	
14mm <b>13474</b>	14mm <b>13481</b>	



MICROBLADING

Numb Master Topical Anesthetic Cream

Contains 9.6% Lidocaine as the active ingredient. A little goes a long way when used during treatments.  
 - Original from the USA  
 - Numbing effect will reach optimal level within 40 minutes



25g  
15982



119g  
14072



Topical Analgesic Gel, 30ml

- Topical anaesthetic to prevent pain  
 - Relief for pain & swelling  
**14073**



The Brow Collection Microblading - Organic Brow Pigment, 8ml

Cosmetic procedure used to create semi-permanent, natural-looking eyebrows. A manual tool & blade is used to deposit small amounts of colour pigment into the upper epidermal layer of the skin. The blade is made up of thin, disposable needles that create fine hair strokes to mimic the natural brow hairs. The perfect solution for sparse, over-plucked & thinning brows.



Brunette Brown  
14060



Dark Brown  
14061



Light Ash Brown  
14062



Honey Brown  
14063



Auburn  
14064



Black Brown  
15131



Warm Black  
16023



Blade 1 #12  
14069



Blade 2 #14 curved  
14070



Blade 3 #18U  
14071



Disposable Hand Tool with Blade  
 #12 Curved **14066**  
 #14 Curved **15980**  
 #18U **15981**



Blade #7  
16000



Blade #9  
16124



Blade #11  
16125



Eyebrow Ruler Curved  
 Curved to fit natural shape of brow area for precise microblading  
**14074**



Eyebrow Pencil  
 Waterproof, smudge-proof, with guard  
 Brown  
**14075**



White  
15958



Pencil Razor Blade  
 For sharpening pencil  
**14076**



Hand Tool  
 Pink & Silver, Stainless Steel  
**14065**



**MICROBLADING**

Microfoam Tape for Eyelash Extensions, 75mm x 5m  
Create customized eyepads to fit your client's bottom lid perfectly  
**15917**



**NEW!**

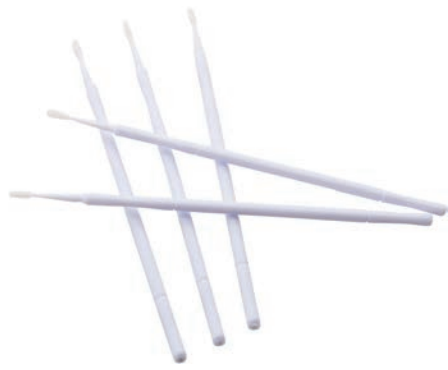
Disposable Pigment Rings (x50)  
Attaches to finger to house small amount of pigment for easy access during treatment  
**14078**



Disposable Clear Cups (x50)  
Clear cups (1.2cm) for pigment during service that attach to pigment rings  
Hygienic, single-use  
**14079**



Disposable Microfibre Wands Medium (x50)  
Hygienic, single-use wands  
**14081**



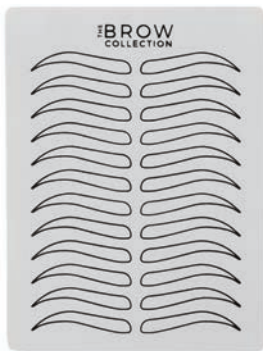
Aftercare Ointment Sachet  
Rich in Vitamin A & D to soothe skin after treatment  
**14082**



Disposable Lint-Free Applicators (x40)  
Hygienic, single-use applicators  
**14080**



Practice Skin  
Brow & skin outline to practice  
**14083**



Compass Brow Shaping Tool  
Variety of lengths & angles for different brow shapes & sizes  
**14084**



Surgical Skin Marker  
Smudge-proof marker with regular tip to outline desired area for microblading  
**14092**



Eyebrow Razor, pack of 2  
For precise brow hair removal  
**14077**



Microblading Aftercare Advice Cards (x10)  
Cards to give to clients to outline results of treatment & aftercare instructions  
**14085**



Microblading Consultation Cards (x10)  
Consultation & consent card to record client details & preferences  
**14086**



Pigment & Tool holder, stainless steel  
**16126**





# BROWS & LASHES

## The Lash Collection - Accessories



TLC Lash Pore Brush Soft Bristles with a unique design to gently cleanse lashes to remove make-up, excess skin & debris build-up.  
**13913**



TLC Mineral Stone  
Used to hold & keep adhesive cool during the lash extension application process  
Provides an alternative to an adhesive ring  
**14067**



TLC Nanomister  
Instantly cures adhesives & eliminates excess fumes  
Lashes get wet directly after application & coating sealer can be applied directly after application  
Soothes eyes, increases longevity of extensions, replaces moisture & prevents eyes from feeling dry & uncomfortable  
**13941**



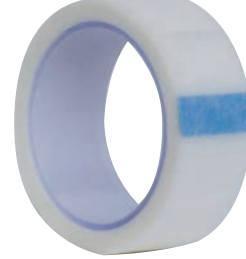
Latex Lash Holder Sponge  
**13489**



Storage jar for loose eyelashes  
23ml  
**7518**



Lint-Free Micropore Tape  
**13487**



Silicone Lash Holder Pad  
**13488**



Lash Primer, 50ml  
Helps to remove oil & dust around the eyelids. It also sterilizes the eyelashes before eyelash extensions  
**13461**



Lash Pure Clear Make-up Remover, Oil-Free, 100ml  
**13507**



Lash Anti-Allergy Gel for Sensitive Eyes, 80g  
**13492**



Consultation Cards for lashes x 10  
**15957**



Mascara Wand, Black  
Pack of 15  
**12362**



Lint-Free Under Eye Patch  
Has its own specialized coating surface, also provides intense nutrients to moisturize the under eye area during use, pair  
**13486**



Half Moon Lash Strip Holder  
**16127**



Flat Strip Lash Holder  
**16128**



Volume Pro Lash Tweezer **13485**



Lash Straight Tweezer **13494**



Lash Curved Tweezer **13495**



Master Tweezer **15959**



Elite Tweezer **15960**



Adhesive Classic, 10ml  
A strong glue, with a bonding period of 5 weeks maximum  
**13460**



Debonder, 15ml  
Eyelash extension lash remover  
**13462**



Volume Lash Fina Adhesive, 10ml  
**13484**



Lash Glue Ring Holder  
**13493**



## BROWS & LASHES

The Lash Collection - Retail

LASH

Lash Black Diamond Sealant, Black 7ml  
**13499**



MD Lash Growth Serum, 5.6ml  
**13508**



Lash Essence, 10ml  
**13509**



Noir Mascara, 8ml  
Will not smear with sweat & tears, oil-free. Coats each extended lash with fine polymer while giving volume & shine  
**13497**



Crystal Drop Coating Sealant, 7ml  
This is designed for wearers to protect extended lashes from moisture, oil & dust & to make lashes last longer  
**13498**



Lash Blink Gel Black Eye Pencil with Sharpener  
**13500**



Lash & Brow Cleanser Gel



3ml  
**13506**



50ml  
**13505**

Lash & Brow Foaming Cleansing Mousse, 50ml  
**14368**



THREADING

Lash Threading Cotton, Organic, 40 Count, 300m  
**13491**



Eyelash tint

BeautyPRO non-woven eye pads for tinting, 96 / bag  
**7422**



BeautyPRO

Salon Specifics Julienne eyelash tint 15ml, water-resistant  
Black **2811**  
Dark Brown **2817**  
Blue/Black **3544**  
Light Brown **12503**



SALON SPECIFICS

RefectoCil tint 15ml  
Black **2932**  
Brown **2933**  
Blue/Black **3724**



RefectoCil



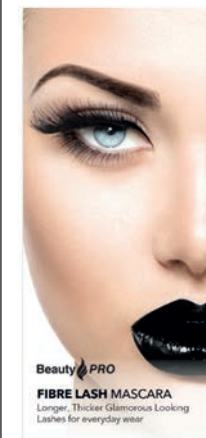
BeautyPRO Cream Peroxide 10 vol for eyelash tint, 50ml  
**7374**  
Glass dropper for liquid peroxide (not shown)  
**2934**

BeautyPRO

Julienne Eyelash Dye Kit. Includes: 15ml eyelash dye black, blue black & dark brown, 3 x 100ml peroxide, 50ml vaseline, 96 eyelash tint pads, tint brush, dappen dish  
**4788**



SALON SPECIFICS



BeautyPRO

FIBRE LASH MASCARA

Longer, Thicker, Glamorous Looking Lashes for everyday wear



BeautyPRO Fibre Lash Mascara Set  
Build your own lashes with mascara & fibre to have amazingly-long lashes, instantly & easily  
**12505**

BeautyPRO

## BROWS & LASHES

Created using the finest synthetic materials with hand-feathered tips to look just like real lashes.

- Vegan & cruelty-free using no animal or human hair
- High end quality without the high end price

- Variety of premium styles offer both natural & dramatic looks
- Thin, flexible band fits most eye shapes
- Lightest & most comfortable lashes you'll ever wear
- 50-80% lighter than lashes currently on the market

Bold #1 11480



Bold #2 11481



Medium #2 11486



Bold #4 11483



Natural #2 11488



Natural #1 11487



Bold #3 11482



Table Top or Peggable Display,  
24 piece, self-standing & peggable, pre-assembled  
11490



**diane.**  
by FROMM

**APRAISE RANGE** - Experience the exclusive APRAISE range of Professional Eyelash & Eyebrow Tints! From the U.K.



Created for the salon professional, Apraise Eyelash & Eyebrow Tinting System fuses colour pigment technology & beeswax with a rich cream base to penetrate deep into the hair shaft to provide radiant colour from root to tip. It comes in a size of 20ml, is water-resistant, smudge-proof & lasts up to eight weeks.

**TINT DEVELOPER, 50ml**  
Enhances the colour of eyelash tint being used  
**10555**

**STAIN REMOVER, 100ml**  
Removes any stains or splashes that may occur when performing the tinting procedure  
**10556**

**PETROLEUM JELLY, 50ml**  
Essential stain protection of the skin around the eyelash or eyebrow when tinting  
**10557**

**PROTECTIVE EYE SHEETS, 96 SHEETS**  
Premium protective sheets for use during the tinting procedure, to prevent skin from staining  
**10558**

**CREAM DEVELOPER, 100ml**  
Stabilised cream-based developer. Sufficient for approximately 300 applications  
**10559**

**EYELASH & EYEBROW TINT, 20ml**

**Black 10560**

**Grey 10561**

**Blue Black 10562**

**Dark Brown 10563**

**Light Brown 10564**

**KITS** **APRAISE®**

**STARTER KIT**  
Contains:  
- Eyelash tint: 1 x black, 1 x blue black, 1 x dark brown  
- Eyelash tint protective sheets, tint developer, dappen dish & tint brush  
**10565**

**APRAISE® POWER SERUM FOR LASH & BROW GROWTH with Optiplex Growth Technology™**

- fuller, longer lashes & brows in just 15 days
- growth-stimulating technology encourages the hair follicle to speed up growth
- improves the appearance of brittle, short, thin lashes & sparse brows
- provides optimal hair anchorage, helping to reduce daily lash loss

10ml  
**14489**

**APRAISE PRE WAX & TINT CLEANSING LOTION**  
Get the most from your brow treatment! Remove oil, dirt & make-up, leaving skin around the eye & brow area prepped for a lash, brow & wax treatment  
100ml  
**14490**

**SALON STARTER KIT**  
Contains:  
Eyelash tint: 1 x black, 1 x blue black, 1 x dark brown, 1 x light brown, 1 x grey stain remover, petroleum jelly, eyelash tint protective sheets, tint developer, dappen dish & tint brush  
**10566**

**Eyebrow Shaping Wax**  
Includes shaping wand  
50ml  
**12340**

**Brow Waxing Kit - by HIVE®**, made in the UK

Wax with Confidence

The Brow Waxing Kit provides salon & brow bar owners the perfect opportunity to increase their customer offering. This compact & complete "all-in-one" business solution is essential for every brow station or treatment room.

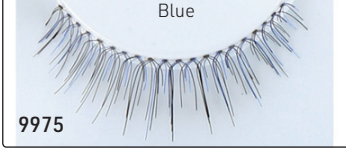
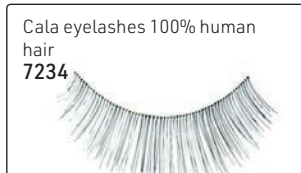
Brow Waxing Kit from HIVE® contains:

- 1 x Petite Compact 200cc Wax Heater with 2 x 50g Sensitive Hot Film Wax Discs
- 1 x Pre Wax Cleansing Lotion 200ml
- 1 x After Wax Treatment Lotion 200ml
- 1 x Mini Disposable Wooden Spatulas (50 pack)
- 1 x Pair of Angled Tweezer

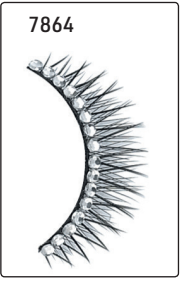
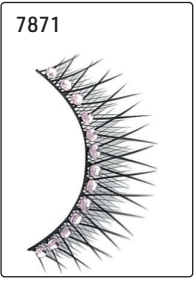
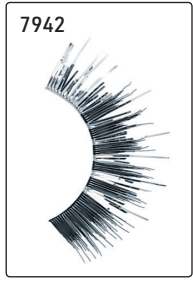
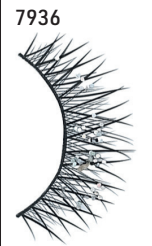
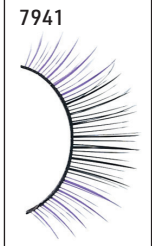
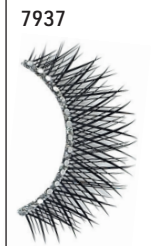
12507



**Cala Eyelashes**



**Cala fashion lashes**



Curved tip tweezers for eyelashes  
7243



**Refectocil Starter Kit**

Contains:

- 1 x Pure Black Tint (15ml)
- 1 x Natural Brown Tint (15ml)
- 1 x Blue Black Tint (15ml)
- 1 x Petroleum Jelly (50ml)
- 1 x 10 vol peroxide (20ml)
- 1 x Eye Protection Papers (96)

- 1 x Application Brush
- 1 x Colour Match leaflet
- 1 x Dappen Mixing Dish

13522



**Perfectly Natural Strip Lashes**

Create the appearance of longer, thicker lashes for a more natural look

#53  
11025



#21  
11026



#62  
11027



#45  
11028



#109  
11029



#110  
11030



#102  
11031



#202  
11032



**Perfectly Glamorous Strip Lashes**

Add a hint of drama for the perfect go-to glamour look

#Demi Wispies  
11035



#28  
11036



#105  
11037



#13  
11038



#33  
11039



#101  
11040



#81  
11041



#117  
11042



**SALON PERFECT**

**Starter Kits - Natural Strip Lashes**

Ideal for first-time users, includes lashes, applicator & adhesive

#53  
11033



#110  
11034



**Starter Kits - Glamorous Strip Lashes**

Ideal for first-time users, includes lashes, applicator & adhesive

#33  
11043



#105  
11044



**Perfectly DIVA**

Embellished with jewels & glitter to sparkle for any special occasion

#Romantic  
11047



#Flirty  
11048



#Sophisticated  
11049



#Demi Wispies, 4 pack  
11046



**Perfectly Individual**

For your own unique lash look. Create volume only where you want it. 56 lashes included.

Starter Kit, includes adhesive, lashes, remover & tweezers  
11050



Short  
11051



Medium Flare  
11052



Pro Lash Applicator  
11056



**Adhesives**

Clear for strip lashes, 7ml  
11053



Clear for individual lashes, 3.7ml  
11054



Brush-on adhesive, 5ml  
11055



**Perfect Brow Pomade, 3.2g**

Creamy, long-wearing brow colour that defines, sculpts & fills in eyebrows for that coveted full look. It is a multi-tasking superstar that combines the work of a pencil, powder & wax in one easy-to-use product.

Light Brown  
11450

Blonde  
11596

Dark Brown  
11597



**Perfect Brow Powder & Stencil Combo**

Lightweight, medium coverage brow powder & stencil kit used for defining, shaping & filling in eyebrows. Two shades & 4 stencils to give you a petite, soft & full or natural eyebrow arch.  
11598



**Perfect Brow Defining Kit**  
Travel-friendly brow kit that includes all the essentials to perfectly sculpt & define brows on-the-go, with a convenient mirrored brow palette, complete with three brow powders & a brow bone highlighter. These lightweight powders are smudge-free & blend freely with the dual-end brush & wax grooming pencil with built-in sharpener.  
11599



**Beautiful Brows - by FAB BROWS**

Fabulous, natural looking eyebrows in just a few seconds!

**fab brows**

- Compact contains:
- Eyebrow Powder
  - Eyebrow Stencils
  - Natural Hair Applicator Brush
  - Magnifying Mirror



- Duo Kit**
- Light brown/medium brown 12470
  - Dark brown/chocolate 12471
  - Slate/black 12472



Starter kit with tester palette  
12063  
Contains 20 packs



**From STARGAZER**

Eyebrow pencil liners used to enhance & refine the shape of the eyebrows. Can be used to fill gaps or lengthen the arc of the eyebrow

Light Brown  
12359

Medium Brown  
12360

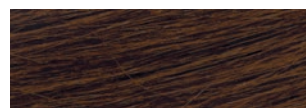
Dark Brown  
12361



**COLORMETRICS**

**Eyebrow Marker Long-Lasting Coverage for Brows**  
Lasts all day, won't rub off, patented, 1.1ml  
A fine tip marker to blend stray grays & enhance the shape, colour & fullness of brows. Wash off with soap & water

Medium Brown  
8330



Blonde  
8331



Auburn  
8332

