

Hair Extensions & Wigs

hairdo.



Bangs today, gone tomorrow. Change your hair style as quickly & as easily as you change your mind. Synthetic Tru2Life® fiber can be heat-styled & cut to help you define your look. It is an exclusive fiber for the highest quality, most refined hairpieces. Blow dry, flat iron or curl it! **However, ensure you keep your iron temperature at 180°C or lower.**

Perfect Match! Each colour is a combo of 7 - 11 different shades to help you get the most natural look that blends with your own hair.

Straight Extension Kit, 16 inch (40.6cm), 8 Pieces

Solidify your glam gal clout with the ultimate in length & volume - straight up. This 8 piece Straight Extension Kit adds ahh-inducing length & luxurious volume in seconds. Use one or as many extensions as you want to dial up the drama.

Includes eight 40.6cm pieces in these widths: • One 7" (17.7cm) piece • One 6" (15.2cm) piece • Four 4" (10.1cm) pieces • Two 2½" (6.3cm) pieces



Ebony - R2
15143



Midnight Brown - R4
15144



Dark Chocolate - R6
15142



Chocolate Copper - R6/30H
15139



Chestnut - R10
15137



Buttered Toast - R1416T
15138



Honey Ginger - R14/25
15141



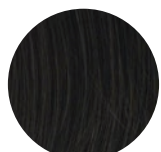
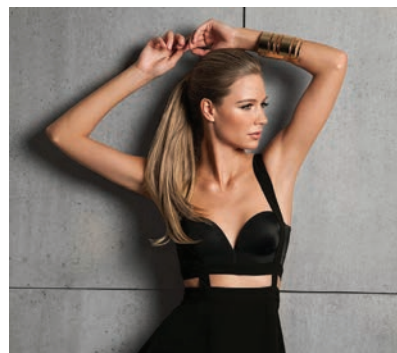
Golden Wheat - R14/88H
15140



Swedish Blonde - R22
15145

Simply Straight Pony, 18 inch (46cm)

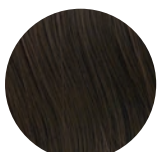
This strut-your-stuff pony delivers the style points straight up. This wrap-around piece instantly adds length, verve & volume to your pony. Easily put the Simply Straight Pony high, low or to the side. This hairpiece features a strip of hair that wraps around the holder & fastens with a hook-and-loop strip to conceal where the ponytail meets your own hair.



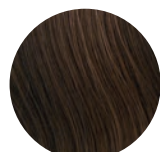
Ebony - R2
15153



Midnight Brown - R4
15149



Dark Chocolate - R6
15152



Chocolate Copper - R6/30H
15146



Chestnut - R10
15151



Buttered Toast - R1416T
15150



Honey Ginger - R14/25
15148



Ginger Blonde - R25
15154



Golden Wheat - R14/88H
15147



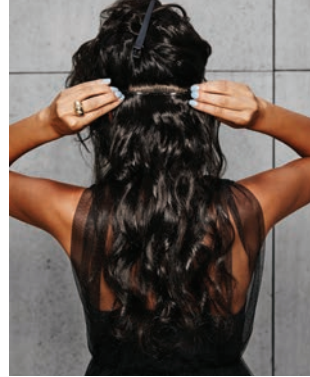
Swedish Blonde - R22
15155



Fineline® Wavy Extension Kit, 22 inch (55.8cm), 4 Pieces

Want some wave without the bulk? This 4 piece Fineline Extension Kit has the perfect amount of hair with the perfect wave. Fine hair is a thing of the past with extensions made just for that. These 4 pieces, with a seamless edge, are so light you'll forget you have them on. Tru2Life® heat-friendly synthetic hair lets you touch up the wave or change it up, anything is possible. With Fineline® construction, the hair is stitched to a thin layer of polyurethane, resulting in lighter, thinner, virtually undetectable pieces that lay flat to the head for a more comfortable, natural looking effect.

Includes four 55.8cm long pieces in these widths: • One 10" (25.4cm) piece • One 5½" (13.9cm) piece • Two 2" (5cm) pieces



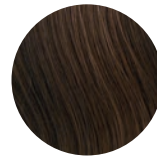
Ebony - R2
15157



Midnight Brown - R4
15164



Dark Chocolate - R6
15158



Chocolate Copper - R6/30H
15160



Chestnut - R10
15156



Buttered Toast - R1416T
15159



Honey Ginger - R14/25
15163



Ginger Blonde - R25
15161



Golden Wheat - R14/88H
15162



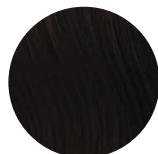
Swedish Blonde - R22
15165

Fineline® Straight Extension Kit, 22 inch (55.8cm), 4 Pieces

Fine hair? No problem with the Fineline® Straight Extension Kit. This unbelievable construction gives you length & volume without the bulk. Achieve a smooth & seamless application that's light & incredibly comfortable. The 22" (55.8cm) length extends mid-back to add lovely length while the 4 piece construction adds va va volume. Includes four 55.8cm pieces in these widths: • One 10" (17.7cm) piece • One 5" (12.7cm) piece • Two 2" (5cm) pieces



Ebony - R2
15168



Midnight Brown - R4
15174



Dark Chocolate - R6
15167



Chocolate Copper - R6/30H
15170



Chestnut - R10
15166



Buttered Toast - R1416T
15169



Honey Ginger - R14/25
15173



Ginger Blonde - R25
15171



Golden Wheat - R14/88H
15172



Swedish Blonde - R22
15175



Straight Extension Kit, 22 inch (55.8cm)

A fairy tale-worthy mane is a breeze with this straight, one-piece extension that gets short hair falling below the shoulder & long hair appearing thicker & more luxurious. One piece equals easy fashion change-ups in a snap via exclusive multi-level construction. Made with Tru2Life® heat-friendly synthetic hair that can be flat-ironed, curled or blown out.



Ebony - R2
15180



Midnight Brown - R4
15184



Dark Chocolate - R6
15179



Chocolate Copper - R6/30H
15178



Chestnut - R10
15177



Buttered Toast - R1416T
15176



Honey Ginger - R14/25
15183



Ginger Blonde - R25
15181



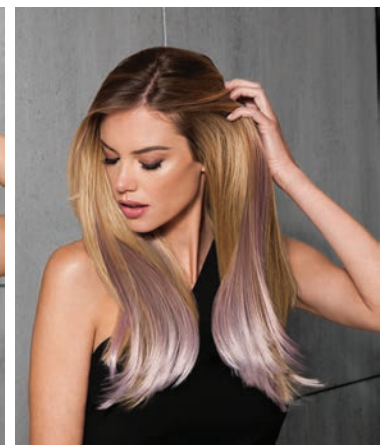
Golden Wheat - R14/88H
15182



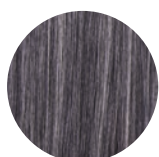
Swedish Blonde - R22
15185

Straight Color Extension Kit, 23 inch (30.4cm), 4 inch (10.1cm) wide, 6 Pieces

Posh pastel or stunning steel add the ultimate hair enhancement! Soft metallic colors create the perfect amount of pop with the Color Extension Kit by Hairdo. These custom-colored 23" (30.4cm) long pieces will showcase your unique style & add length with fashion-forward color. Place the pieces around the top layer of your hair or create a different effect by customizing the placement. Includes six 4" (10.1cm) wide, 23" (30.4cm) long clip-in pieces.



Berry Sorbet
15186



Chrome Mist
15187



Iced Violet
15188



Pink Frost
15189



Stormy Blue
15190

Grand Extension, 23 inch (30.4cm)

If hair extensions had a smarter, wiser, older sister, the 23" (30.4cm) Grand Extension would be it! A three-quarter-cap of luscious hair with five strategically placed pressure-sensitive clips for a secure hold. Soft, natural-looking waves add head-turning volume & movement.



Ebony - R2
15196



Midnight Brown - R4
15197



Dark Chocolate - R6
15195



Chocolate Copper - R6/30H
15194



Chestnut - R10
15193



Buttered Toast - R1416T
15191



Golden Wheat - R14/88H
15192

Wavy Extension, 23 inch (30.4cm)

Say "yes please!" to loosely-spiraled layers & the hassle-free design of this one-piece, multi-level extension. Gorgeous, jaw-dropping length & volume for days is yours in an instant. Attaches with 7 pressure-sensitive clips.



Ebony - R2
15202



Midnight Brown - R4
15204



Dark Chocolate - R6
15201



Chocolate Copper - R6/30H
15200



Chestnut - R10
15199



Buttered Toast - R1416T
15198



Honey Ginger - R14/25
15207



Ginger Blonde - R25
15203



Golden Wheat - R14/88H
15206

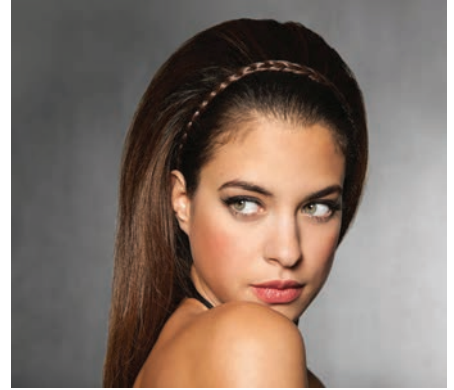


Swedish Blonde - R22
15205



French Braid Band

Whether your spirit animal is a romantic hippie or a glam rock goddess, the French Braid Band will have your Coachella crew cooing, c'est magnifique! The French Braid Band is as quick & easy as putting on a headband... in a flash you're ready for any & all adventures! Sold individually.



Midnight Brown - R4
15213



Chocolate Copper - R6/30H
15216



Chestnut - R10
15215



Buttered Toast - R1416T
15210



Golden Wheat - R14/88H
15212



Ginger Blonde - R25
15211



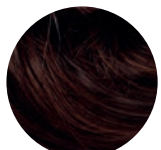
Swedish Blonde - R22
15214

Highlight Wrap

Take a fancy to this alluring, wrapped up-do. This patented style easily wraps around any bun, chignon or ponytail with a secure comfort elastic band holder. The Highlight Wrap incorporates multi-tonal shades & varying lengths, from 3/4-6 inches (8.25 - 15.2cm) to get you mad "wrap star" cred.



Ebony HI LT - R2/6
15220



Midnight Brown HI LT - R4/8
15224



Chocolate Copper - R6/30H
15219



Chestnut - R10
15218



Buttered Toast - R1416T
15217



Honey Ginger - R14/25
15223



Ginger Blonde - R25
15221



Golden Wheat - R14/88H
15222

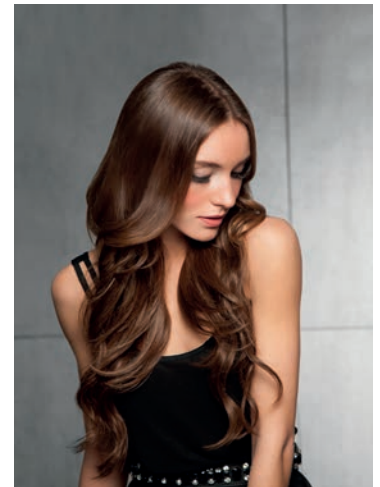


Swedish Blonde - R22
15225



Invisible Extension, 20 inch (50.8cm)

Heavenly hair isn't just for runway models & Hollywood starlets anymore. Get mega-watt length & volume in seconds with this 20" (50.8 cm) halo-style extension. Just slip it on like a headband & pull your own hair over it - the ingenious & inconspicuous design blends in seamlessly.



Ebony - R2
15230



Midnight Brown - R4
15234



Dark Chocolate - R6
15229



Chocolate Copper - R6/30H
15228



Chestnut - R10
15227



Buttered Toast - R1416T
15226



Honey Ginger - R14/25
15233



Ginger Blonde - R25
15231



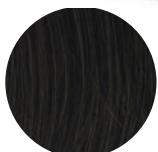
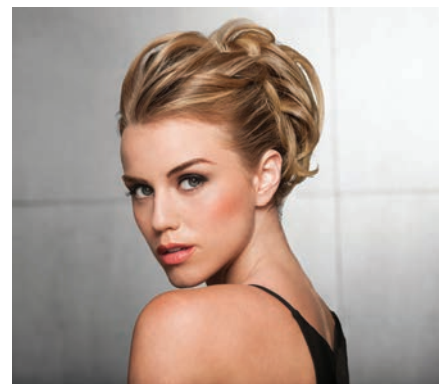
Golden Wheat - R14/88H
15232



Swedish Blonde - R22
15235

Style-A-Do & Mini-Do Duo Pack

This dynamic duo can be worn separately or together to create perfect up-dos, twisted rolls, high chignons & low chignons in no time. Just wrap these patented elastic-band pieces around a ponytail or bun to maximize your style quotient.



Ebony - R2
15243



Midnight Brown - R4
15249



Dark Chocolate - R6
15252



Chocolate Copper - R6/30H
15246



Chestnut - R10
15251



Buttered Toast - R1416T
15245



Honey Ginger - R14/25
15248



Ginger Blonde - R25
15244



Golden Wheat - R14/88H
15247



Swedish Blonde - R22
15250



Wig Fantasy

Slip into style with precision cuts & notice-me hues that mimic today's top trends. The best kept secret of Hollywood glamour types & chart-topping music stars, Hairdo wigs give you a bold beauty point-of-view & a new attitude.

Arctic Melt (Midnight Blue, Purple, White) - Melt hearts in this cool toned color combo. Long-rooted waves boldly go from midnight blue to purple that fades into white lilac. The Tru2Life® heat-friendly synthetic fiber can be styled into a different curl pattern or completely straight. With a comfortable cap design you can wear it for a night out or even all day. Arctic Melt gives you #hairgoals...no celebrity colorist or harsh chemicals required.
 Front: 5 1/4" (13.3cm) Crown: 17 1/2" (44.4cm) Side: 14 1/2" (36.8cm) Back: 17 1/2" (44.4cm) Nape: 17 1/2" (44.4cm)
 15208



Blue Waves (Bold Blue) - Mermaid hair is just seconds away. Make a splash in this bold blue with on-trend waves. Colors flow from a dark root to bold & baby blues. The Tru2Life® heat-friendly synthetic fiber can be styled curly or sleek. With a comfortable cap design you can wear it for a night out or even all day. Blue Waves will have you crushing it in the hair department.
 Front: 8 1/2" (21.5cm) Crown: 13 1/2" (34.2cm) Side: 9 1/2" (24.1cm) Back: 13 1/2" (34.2cm) Nape: 11" (27.9cm)
 15209



Lilac Frost (Grey, Purple) - Show off your girly side in pretty pastel waves. The long lilac hair is tipped & topped with a darker root to make it bold but believable. The open cap is constructed & made to feel as cool as you'll look. To enhance your look add a braid, curl it or flat iron it super-straight.
 Front: 14" (35.5cm) Crown: 18" (45.7cm) Side: 16" (40.6cm) Back: 18" (45.7cm) Nape: 17" (43.1cm)
 15236





Midnight Berry (Deep Purple) - Fantasy meets fashion with this multi-dimensional berry hue. A touch of depth at the root gets you this season's hottest hair color without spending hours at the salon. Look & feel cool in this open wefted cap that is comfortable & adjustable. Change it up & add some waves or make it super-straight to show off the angles in this cut.

Front: 12" (30.4cm) Crown: 6½" (16.5cm) Side: 8" (20.3cm) Back: 5" (12.7cm) Nape: 2" (5.08cm)
15237



Mint To Be (Mint Green) - From the runways to salons & now to your home! One of the most sought-after rooted hair colors is yours without the bleaching & stripping. It's ready to wear so try it out for a day, a night or as long as your mint mood desires. The adjustable cap is made to fit comfortably & feels light & cool. Tru2Life® heat-friendly synthetic hair gives you styling versatility. If you weren't getting so many compliments, you'd forget you had it on!

Front: 4" (13.3cm) Crown: 13½" (44.4cm) Side: 11" (36.8cm) Back: 14" (44.4cm) Nape: 12" (30.4cm)
15238



Out Of The Blue (Rooted, Light Blue) - Surprise the world with this bold & beautiful rooted blue. The angled cut offers natural volume & is made with Tru2Life® heat-friendly synthetic hair so you can add some curl or wave. The lightweight cap construction makes it easy to wear on a night out or all day long. Change it up by adding a full or side bang or simply shake, style & go!

Front: 12" (30.4cm) Crown: 11" (27.9cm) Side: 11¾" (29.8cm) Back: 9½" (24.1cm) Nape: 6" (15.2cm)
15239





Peachy Keen (Rooted, Peach) - The perfect shade of peachy pink can now be yours without commitment. This pastel color trend is paired with a bob cut, making it classic yet edgy. The multi-faceted color has a darker root to add contrast & a natural look. Have your hairstylist customize the bang & style the Tru2Life® heat-friendly synthetic hair with a curling iron or flat iron. The cap is made to be light & as cool as you.

Front: 3¾" (9.5cm) Crown: 11½" (29.2cm) Side: 8" (20.3cm) Back: 10" (25.4cm) Nape: 5" (12.7cm)

15240



Pinky Promise (Rooted, Pink) - We can't promise you won't stand out with this pop of pink. These classic layers are anything but ordinary. The dark root adds contrast & makes it look like you spent hours in the salon chair. The Tru2Life® heat-friendly synthetic fiber can be styled curly or completely straight. With a comfortable cap design you can wear it for a night out or even all day. Pinky Promise will have you lying about who did your hair color.

Front: 8½" (21.5cm) Crown: 13¾" (34.9cm) Side: 12¾" (32.3cm) Back: 14" (35.5cm) Nape: 12¼" (31.1cm)

15241



Whiteout (Rooted, Platinum 60/6) - Wow in this wickedly-white wig. The classic mid-length hairstyle is updated & made edgy with a silver white base & darker roots. Add your personal style to this cut by styling it curly or straight. The open wefted cap keeps you comfortable while you rock these locks.

Front: 10½" (26.6cm) Crown: 10½" (26.6cm) Side: 13½" (34.2cm) Back: 13½" (34.2cm) Nape: 13½" (34.2cm)

15242



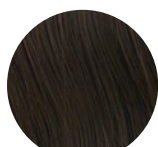


Fishtail Braid Headband

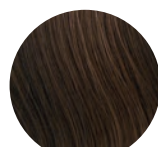
Mermaid hair is just a headband away. Add it to sleek shiny hair or pull the edges & rough it up for a look that's ready for the beach.



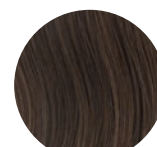
Ebony - R2
15307



Dark Chocolate - R6
15310



Chocolate Copper - R6/30H
15304



Chestnut - R10
15306



Buttered Toast - R1416T
15303



Ginger Blonde - R25
15309



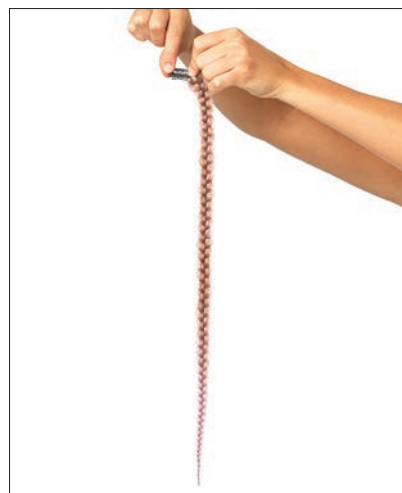
Golden Wheat - R14/88H
15305



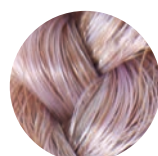
Swedish Blonde - R22
15308

Metallic Braid Extension, 20 inch (50.8cm)

Glisten & glimmer in metal-worthy braids. These single braids are the perfect addition to any hair color & style. Just clip, shine & go!



Light Purple/Black
15311



Light Purple/Blonde
15312



Blue
15313



Pink
15314



Purple
15315

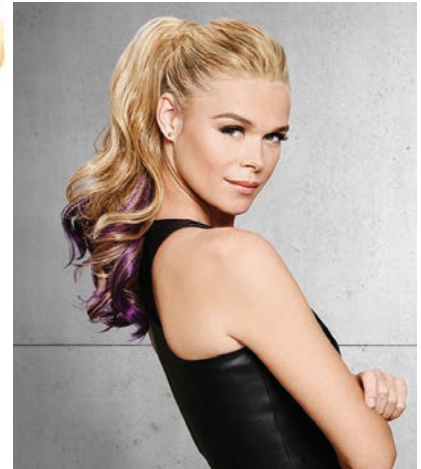


Teal
15316



Color Splash Pony, 23 inch (58.4cm)

New colors! Get the 'social media star' look in an instant with the 23 inch (58.4cm) Color Splash Pony. Choose from your natural hair tone for hair bursting with highlighted & dip-dyed pastel ends: blue, pink, light green or lavender. This long & wavy pony includes a smooth strip of hair that wraps around the holder & fastens it in with a hook-and-loop strip to conceal where the ponytail meets your own hair.



Ebony
R2/Denim Blue
15272



Midnight Brown
R4/Denim Blue
15264



Chocolate Copper
R6/30H/Denim Blue
15255



Chestnut
R10/Denim Blue
15253



Buttered Toast
R1416T/Denim Blue
15271



Ginger Blonde
R25/Denim Blue
15259



Golden Wheat
R14/88H/Denim Blue
15261



Ebony
R2/Dark Purple
15267



Midnight Brown
R4/Dark Purple
15265



Chocolate Copper
R6/30H/Dark Purple
15256



Chestnut
R10/Dark Purple
15254



Buttered Toast
R1416T/Dark Purple
15269



Ginger Blonde
R25/Dark Purple
15260



Golden Wheat
R14/88H/Dark Purple
15262



Ebony
R2/Red Wine
15273



Midnight Brown
R4/Red Wine
15268



Chocolate Copper
R6/30H/Red Wine
15257



Chestnut
R10/Red Wine
15266



Buttered Toast
R1416T/Red Wine
15270



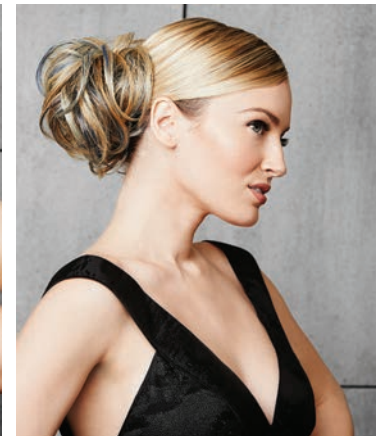
Ginger Blonde
R25/Red Wine
15258



Golden Wheat
R14/88H/Red Wine
15263

Color Splash Wrap

Morph into an edgier you with the Color Splash Wrap by Hairdo! Dare to bare your love of denim, pursue-purple or rock-it-in-red. Put your hair in a bun or loop the ends of your pony then wrap it around. Wear one or mix & match to create your own look.





Ebony
R2/Denim Blue
15279



Midnight Brown
R4/Denim Blue
15292



Chocolate Copper
R6/30H/Denim Blue
15284



Chestnut
R10/Denim Blue
15274



Buttered Toast
R1416T/Denim Blue
15281



Ginger Blonde
R25/Denim Blue
15287



Golden Wheat
R14/88H/Denim Blue
15289



Ebony
R2/Dark Purple
15278



Midnight Brown
R4/Dark Purple
15293



Chocolate Copper
R6/30H/Dark Purple
15285



Chestnut
R10/Dark Purple
15275



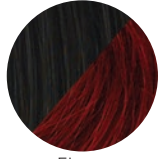
R1416T/Dark Purple
Buttered Toast
15282



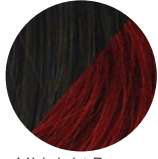
Ginger Blonde
R25/Dark Purple
15288



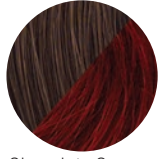
Golden Wheat
R14/88H/Dark Purple
15290



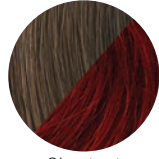
Ebony
R2/Red Wine
15280



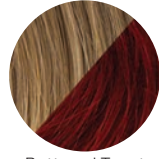
Midnight Brown
R4/Red Wine
15294



Chocolate Copper
R6/30H/Red Wine
15286



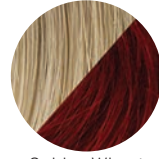
Chestnut
R10/Red Wine
15277



Buttered Toast
R1416T/Red Wine
15283



Ginger Blonde
R25/Red Wine
15276



Golden Wheat
R14/88H/Red Wine
15291

Color Strip Extension, 18 inch (45.7cm)

Stick to one or mix & match to brighten up your do. These heat-friendly POPs of color can be styled, braided or let loose.



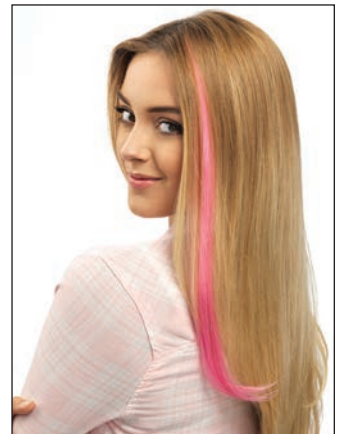
Blue Frosting
15295



Party Dress Green
15296



Silver Surprise
15297



Starry Sky Blue
15298



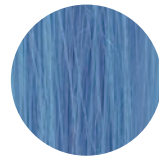
Pink Sprinkles
15299



Berry Kiss
15300



Party Purple
15301



Royal Blue
15302

Hairdo Tru2Life® Color Ring 15317





Extension Maintenance Liquid Lines

CLEANSE

Clean your wigs, hair pieces & extensions with this freshening shampoo
Specially formulated for synthetic or human hair
- pH balanced
- Provides weightless moisture & shine
- Gently cleanses away styling product build-up
- Formulated to neutralize odors from wear with a fresh, light fragrance

236ml
16159



RESTORE

Restore your wigs, hairpieces & extensions with this leave-in conditioner & heat-styling protector
Specially formulated for synthetic or human hair
- 2-in-1 detangler & protectant
- Nourishes synthetic fibres for all-day softness
- Protectant when styling heat-friendly synthetic fibre

236ml
16160



SHAPE

Shape your wigs, hairpieces & extensions with this medium-hold pump styling spray
Specially formulated for synthetic or human hair
- Medium hold spritz
- Designed to give short or mid-length wigs a soft, flexible shape
- Ideal alternative to aerosol styling products

236ml
16161



YOSHE 100% HUMAN HAIR



100% virgin Remy human hair, each strand individually hand-threaded in order to maintain the hair's natural cuticle direction. Remains tangle-free & looks undeniably natural & vibrant over time.

CLIP HIGHLIGHT, 2 PIECES

Creating highlights is just a clip away!
Add an accent to your colour
100% real hair, 24cm

Black Pearl #1	10157
Darkest Brown #2	10158
Lisbon #2/4	10159
Morocco #2.3 - 30.33.31	10160
Dark Brown #4	10161
Dark Chestnut Brown #6	10162
Light Chestnut Blonde #8	10163
Sandy Mix #10.22-18.24	10165
Solomon #18.22 - 21.27	10166
Strawberry Blonde #27	10168
Super Natural #27.613	10169
Light Blonde #613	10170
Champagne #614	10171
Barcelona #973	10172



Black Pearl



Darkest Brown



Lisbon



Morocco



Dark Brown



Dark Chestnut Brown



Light Chestnut Blonde



Sandy Mix



Solomon



Strawberry Blonde



Super Natural



Light Blonde



Champagne



Barcelona

100% virgin Remy human hair, each strand individually hand-threaded in order to maintain the hair's natural cuticle direction. Remains tangle-free & looks undeniably natural & vibrant over time.

CLIP IT BANG!

The allure of colour Creating a new style is just a clip away!
 Non-committal, safe & non-damaging, comfortable, fast to apply & remove, no tools required
 19cm

The Airborne Charm	10136
Glamour Berry	10138
Chibi Unicorn	10139
Dreamy Pink	10140
Gothic Doll	10141
Brown & Blonde Mix	10142
Brown & Auburn Mix	10143
Honey Blonde	10147
Blue Ray	10148
Champagne	10149
Blue Awol	10153
New York City	10154
Mini Rocket	10155



Black Pearl #1	10173
Lisbon #2/4	10175
Morocco #2.3 - 30.33.31	10176
Dark Brown #4	10177
Dark Chestnut Brown #6	10178
Light Chestnut Blonde #8	10179
Normandy #10.22-18.24	10181
Solomon #18.22 - 21.27	10182
Strawberry Blonde #27	10184
Super Natural #27.613	10185
Dominican #614	10187
Barcelona #973	10188

FLIP IT EXTENSIONS, 35cm, 100% human hair

Create volume with zero damage - the latest hair extension trend

Takes less than 1 minute to fit & 1 second to remove

Attaches to your head by a thin wire that is hidden by your hair.

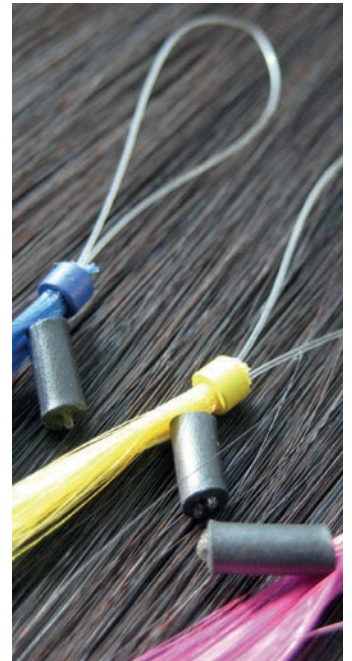


Bringing you the latest fashion trend. Available in 2 lengths (35 & 45cm) with 42 colour combinations, & the micro-ring attachment system

hair-X-tend Ombre colour swatch ring: 42 colour combinations (not shown) 11017

Root colour	End colour	35cm	45cm
#1	#32	10816	10858
	#613	10814	10856
	#99J	10815	10857
	#Dark blue	10812	10854
	#Hot pink	10810	10852
	#Purple	10811	10853
	#Red	10813	10855
#1B	#32	10809	10851
	#613	10807	
	#99J	10808	10850
	#Dark blue	10805	10847
	#Hot pink	10803	10845
	#Purple	10804	10846
	#Red	10806	10848
#2	#32	10822	10864
	#613	10821	10863
	#Dark blue	10819	10861
	#Hot pink	10817	10859
	#Purple	10818	10860
	#Red	10820	10862
#4	#32	10828	10870
	#613	10827	10869
	#Dark blue	10825	10867
	#Hot pink	10823	10865
	#Purple	10824	10866
	#Red	10826	10868

Root colour	End colour	35cm	45cm
#6	#613	10833	10925
	#Dark blue	10831	10923
	#Hot pink	10829	10921
	#Purple	10830	10922
	#Red	10832	10924
#16	#613	10838	10930
	#99J	10839	10931
	#Dark blue	10836	10928
	#Hot pink	10834	10926
	#Purple	10835	10927
	#Red	10837	10929
#600	#99J	10843	10935
	#Dark blue	10841	10933
	#Hot pink	10844	10936
	#Purple	10840	10932
	#Red	10842	10934



Root colour: #1 #1B #2 #4 #6 #16 #600



hair-X-tend Ombre CLIPPEX extensions:

100% Remy Human Hair

Bringing you the latest fashion trend. Attached with a single clip 35mm wide.
Available in 35cm length with 41 colour combinations.

Root colour	End colour	35cm
#1	#32	10950
	#99J	10949
	#613	10948
	#Dark blue	10946
	#Hot pink	10944
	#Purple	10945
	#Red	10947
#1B	#32	10943
	#613	10941
	#99J	10942
	#Dark blue	10939
	#Hot pink	10937
	#Purple	10938
	#Red	10940
#2	#32	10956
	#613	10955
	#Dark blue	10953
	#Hot pink	10951
	#Purple	10952
	#Red	10954
#4	#32	10962
	#613	10961
	#Dark blue	10959
	#Hot pink	10957
	#Purple	10958
	#Red	10960
#6	#613	10967
	#Dark blue	10965
	#Hot pink	10963
	#Purple	10964
	#Red	10966

Root colour	End colour	35cm
#16	#613	10972
	#99J	10973
	#Dark blue	10970
	#Hot pink	10968
	#Purple	10969
	#Red	10971
#600	#99J	10977
	#Dark blue	10975
	#Purple	10974
	#Red	10976



Attachment detail:



hair-X-tend Tapex 40mm Tape System:

100% Remy Human Hair

hair-X-tend Tapex hair extension system: the most advanced & cost-effective tape system. 100% Remy human hair.
Benefits:

- Easy & quick to install
- Tape extension benefits with ability to brush hair easily & thoroughly
- Most natural-looking tape extension system available
- Re-usable (may require new tape sold separately)
- Tape lies hidden flat against the head giving the most natural feel & look
- Can be used for full head or streaks/highlights
- 100% Remy human hair in 19 natural colours
- 2 lengths available: 35 & 45cm
- Packed in pocket containing 10 x 40mm wide strands

Tapex 40mm tape: straight hair (packet of 10):	35cm	45cm
#2		10999
#4	10982	11000
#6	10985	11001
#8	10986	11002
#10	10987	11003
#16	10988	11004
#18	10989	11005
#22	10983	11007
#24		11008
#27	10991	11009
#30	10992	11010
#32	10993	11011
#33	10994	11012
#35		11013
#60		11014
#600	10997	11015
#613	10984	11016



Scan for installation instructions



Refer to colour legend "Tint Equivalent" on page 111

hair-X-tend M-tip Tape System: 8mm wide (when folded)

hair-X-tend M-tip hair extension system: the most advanced & cost-effective tape system. 100% Remy human hair.

Benefits:

- Easy & quick to install
- Tape extension benefits with ability to brush hair easily & thoroughly
- Most natural-looking tape extension system available
- Re-usable (may require new tape sold separately)
- Tape lies hidden flat against the head giving the most natural feel & look
- Can be used for full head or streaks/highlights
- 100% Remy human hair in 26 colours: 19 natural & 7 fun colours
- 2 lengths available: 35 & 45cm
- Each hair strand individually packed in a sheet of 10 strands



100% Remy Human Hair

M-tip hair-X-tend replacement tape
(pkt of 50)
7585



M-tip straight hair (packet of 10):	35cm	45cm	M-tip straight hair (packet of 10):	35cm	45cm
#1	7533	7559	#613	7551	7577
#1B	7534	7560	#600		7576
#10	7539	7565	#8	7538	7564
#16	7540	7566	#Burgundy	7552	7578
#18	7541	7567	#Dark blue	7553	7579
#2		7561	#Green	7554	7580
#22	7542	7568	#Hot pink	7555	
#24	7543	7569	#Purple	7556	7582
#27	7544	7570	#Red		7583
#30	7545	7571	#Violet		7584
#32	7546	7572			
#33		7573			
#35	7548	7574			
#4	7536	7562			
#6	7537	7563			
#60	7549	7575			

Refer to colour legend "Tint Equivalent" on page 111

How to attach M-tip tape hair extensions

1. Preparation: wash hair with a mild shampoo & do NOT apply conditioner.

Completely dry the hair, making sure that there is no moisture residue at the root area.



2. Section the hair to make a clear, horizontal hair line.



3. Using a tail comb, lift a rectangular (flat) section of hair from this line.



4. Take a M-tip extension strand & peel off the paper on one side from the tape.



5. Place the hair section onto the exposed tape section, making sure that the hair strands are evenly distributed across the exposed tape.



6. Peel off the remaining paper from the M-tip



7. Fold the M-tip in half in such a way that the exposed tape lies on top of the tape already attached to the hair strand.



8. Press the folded M-tip firmly together



9. To improve the adhesion, heat the tape briefly with an extension heating iron. (Recommended on cold days, otherwise optional)



10. Continue along the hair line to complete the installation

How to remove M-tip tape hair extensions



1. Insert the end of a nail file or flat cuticle pusher from the top between the hair section & the folded tape. Use your index figure to support the joint whilst doing so.



2. Twist the tool in between the taped joint, forcing the two sides of the tape open.



3. Turn the joint over & insert the tool between the hair & the other piece of tape.



4. With the tool work the tape off the hair strand



For video instructions how to install & remove M-tip hair extensions, please view YouTube site: <http://youtu.be/HtPEN946pr0>. You will also find instructions how to replace M-tip tape pieces.

hair-X-tend micro-ring hair extension system: the most advanced & cost-effective 100% Remy human hair extension system available

100% Remy Human Hair

Benefits:

- Chemical-free & glue-free attachment method using patented micro-rings
- Very easy to use with little professional training required
- Very quick to install with no mess, fiddly bits or burnt fingers
- Extensions can easily & quickly be re-used/re-positioned up to 6 times
- Applications: full head or streaks/highlights only
- 100% Remy human hair
- 26 colours: 19 natural colours & 7 fun colours available
- 3 lengths: 35, 45 & 60cm

Features:

- Uses a patented micro-ring which has the hair extension strand permanently glued to the inside of the ring, resulting in your client's hair never being crushed or in contact with the ring, unlike cylinder & other loose ring systems.
- Easily removed & re-usable up to 6 times by loosening micro-ring with removal tool & re-positioning or re-using when your client requires.
- No expensive equipment required for fixing.
- Each extension strand is individually wrapped ready to be used when required (prevents tangling before installation).
- As hair-X-tend only uses 100% Remy human hair, you can use any styling method (blow-drying, straightening, curling) on the hair, as well as any process (colouring, perming, straightening) on the hair with few restrictions.
- Unlike other glue/fusion methods, your client can use most professional hair care products with certain guidelines & can swim & leave hair wet for extended periods.
- Unlike cylinder & other loose ring systems, hair does not suffer mechanical damage as the patented micro-ring is never in contact with the client's hair.

Copper rings

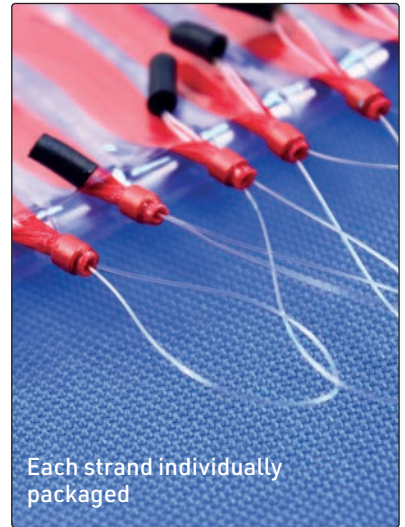
Replacement rings (300/pk)

- Dark Brown **5859**
- Medium Brown **5860**
- Light Brown **5861**
- Blonde **5862**



TIP: The following schedule can be used to choose colours. The colour code shown the column "Tint Equivalent" is the CDC tint colour that matches the extension colour.

hair-x-tend colour	CDC Tint equivalent	hair-x-tend colour	CDC Tint equivalent
#1	1 - Black	#24	11 - Platinum blonde
#1B	4 - Dark brown	#27	10.3 - Superlight golden blonde
#2	5 - Light brown	#30	8.35 - Light chocolate blonde
#4	6 - Dark blonde	#32	8.46 - Light red copper blonde
#6	8 - Light blonde	#33	7.23 - Tobacco blonde
#8	7.11 - Matt blonde	#35	5.6 - Light red brown
#10	8.03 - Light warm natural blonde	#60	11.13 - Pearl platinum blonde
#16	10.13 - Superlight pearl blonde	#600	12 - Extreme blonde
#18	10.32 - Platinum beige blonde	#613	12.13 - Extreme pearl blonde
#22	11.3 - Golden platinum blonde	#99J	5.22 - Light intense violet brown



Each strand individually packaged

Straight hair: 100% Remy human hair on micro-rings (packet of 10)

	35cm	45cm	60cm
#1		5052	5058
#1B		5053	5059
#10	5064	5070	5076
#16	5082	5091	5100
#18	5065	5071	5077
#2			5060
#22	5083	5092	5101
#24	5084		5102
#27	5066	5072	5078
#30	5067	5073	5079
#32	5360	5365	5370
#33	5068	5074	5080
#35	5069	5075	5081
#4		5055	5061
#6	5050	5056	5062
#60	5085	5094	5103
#600	5480	5481	5482
#613	5086	5095	5104
#8	5051	5057	5063
# Burgundy	5362	5367	5372
# Dark blue		5096	5105
# Green	5364	5369	5374
# Hot pink	5088	5097	5106
# Purple			5107
# Red	5090	5099	5108
# Violet	5363	5368	5373

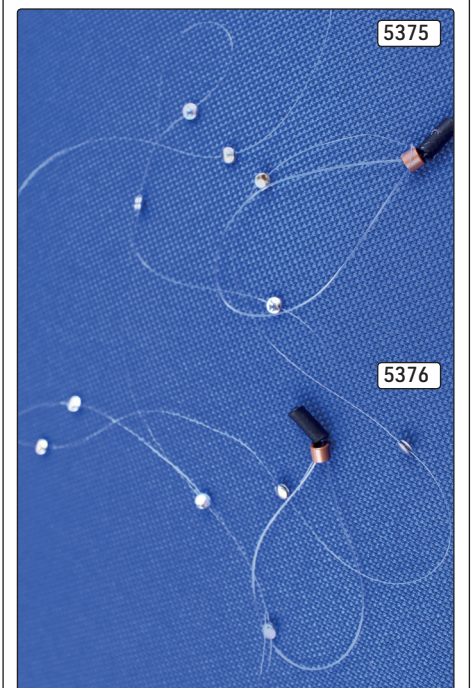
hair-X-tend micro-ring in a body wave, 35cm Wavy Hair, (packet of 10) 100% Remy human hair

	35cm
#1	5938
#1B	5940
#18	5951
#2	5939
#22	5943
#35	5952
#4	5944
#6	5950
#60	5953
#600	5942
#613	5941



Stud (6) micro-ring hair extension, single

#Silver	5376
---------	------



How to attach micro-ring hair extensions

1. Gather a strand of natural hair with a tail comb.
2. Place guiding loop of hair-X-tend on root-end of the strand.
3. Lift root-end of the strand over guiding loop.
4. Pull the entire strand through guiding loop.
5. Hold micro-ring of hair-X-tend with one hand & guiding loop holder with the other.
6. Pull guiding loop holder to guide strand through micro-ring; discard loop & holder.
7. Adjust micro-ring position on strand & hold still.
8. Flatten micro-ring with micro-ring tool to lock micro-ring in place with strand.
9. hair-X-tend extended on natural hair.
10. hair-X-tend extension completed.

How to remove micro-ring hair extensions

1. Grip micro-ring with the hollowed-out part of the tool.
2. Press micro-ring to return it to original round shape.
3. Slide out the hair-X-tend extension from the natural hair.
4. hair-X-tend removed from the natural hair.

hair-X-tend micro-ring accessories

hair-X-tend colour swatch ring for micro-ring system **5109**

hair-X-tend micro-ring pliers (1 hole) **5111**

hair-X-tend micro-ring pliers (2 holes) & looper kit **5110**

Beaded (6) micro-ring crystal hair extension, single

# Dark blue	5380
# Pink	5378
# Purple	5381
# Red	5379

hair-X-tend straight V-Tip 100% Remy Human Hair Extensions, (packet of 10) Keratin bond in V-shape

Stand for extensions **9372**

Hair extension acrylic holder, holds 30 strands **6211**

Special hair extension brush metal/nylon bristles **7450**

Hair Extension 4-in-1 Caddy

Helps you wash, style, pack & store any extensions more quickly & efficiently
 Holds extensions in place to free both hands to dry & style

1. Attach caddy to smooth, hard surface with suction cups (recommended at area where extensions are shampooed & rinsed to prevent mess)
2. Insert extensions & close top so you can wash, colour, blow-dry & style. Clips in caddy prevent hair from slipping out
3. Wrap extensions around caddy & place in travel bag for safe, easy travel or use included clips in caddy to hang extensions in dry area when not in use to keep them safe

14260

	35cm	45cm
#1	5966	6055
#1B	5965	6059
#10	5971	6056
#16	5972	6057
#18	5973	6058
#2	5967	6060
#22	5974	6061
#24	5975	6062
#27	5976	6063
#30	5977	6064
#32	5978	6065
#33	5979	6066
#35	5980	6067
#4	5968	6068
#6	5969	6069
#60	5981	6070
#600	5982	6071
#613	5983	6072
#8	5970	6073
# Burgundy	5984	6074
# Dark Blue	5985	6075
# Green	5986	6076
# Hot Pink		6077
# Purple	5988	6078
# Red	5989	6079
# Violet	5990	6080

100% Remy Human Hair

hair-X-tend V-tip accessories

Keratin glue stick
4.5g

Brown
6001

Black
6003



CLIPPEX 100% Remy Human Hair pieces, consisting of the following 10 pieces:

1 x 20cm, 1 x 17.5cm, 2 x 13.75cm, 2 x 8.75cm & 4 x 3cm in width, all on a easy-to-use clip system

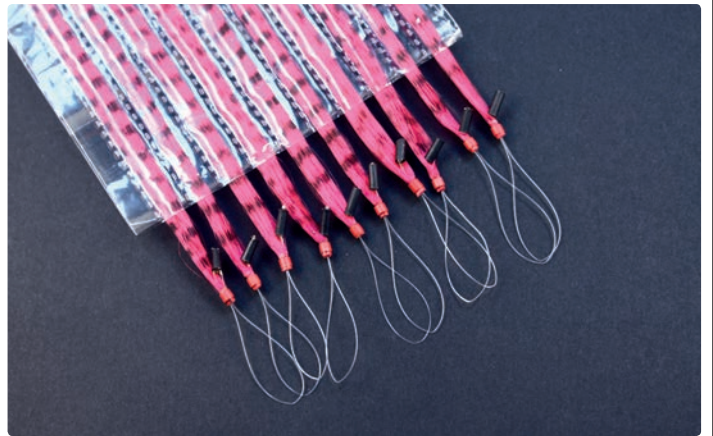
Straight	35cm	45cm
#1B	5798	5921
#18	5804	5917
#2	5797	5922
#22		5923
#35	5802	5919
#4	5800	5924
#60	5803	
#600	5801	5926
#613	5796	5927



Synthetic Hair

hair-X-tend Grizzly micro-ring SYNTHETIC hair extension 35cm long: (Packet of 10). Note: as these hair extensions are made of synthetic fibre, they cannot be heated above 180°C.

#Hot pink	7382	#Orange	7388
#Red	7383	#White	7389
#Purple	7384	#Yellow	7391
#Turquoise	7387		



CLIPPEX 100% Remy Human Hair - on a single clip

Consists of single clip, 35mm wide piece

Straight	35cm
#1	6751
#1B	6752
#10	6757
#16	6758
#18	6759
#2	6753
#22	6760
#27	6762
#30	6763
#32	6764
#33	6765
#35	6766
#4	6754
#6	6755
#60	6767
#600	6768
#613	6769
#8	6756
#Burgundy	6770
#Dark Blue	6771
#Green	6772
#Hot Pink	6773
#Purple	6774
#Red	6775
#Violet	6776



CLIPPEX 100% Remy Human Hair - on 2 clips

Consists of 2 x clips, 65mm wide piece

Straight	35cm
#1	6777
#10	6783
#18	6785
#2	6779
#22	6786
#24	6787
#27	6788
#30	6789
#32	6790
#33	6791
#35	6792
#4	6780
#6	6781
#60	6793
#600	6794
#613	6795
#8	6782



Attachment clips



Attachment clip



Synthetic Hair

Synthetic Hair Pieces & Strands in a variety of colours: Ideal for parties & special functions, attachable by spring clip comb. Can be curled or straightened with caution (maximum heat 180°C, will melt on higher heat)

EMMA Synthetic Single Strand on comb clip, funky, 45cm:

Dark chocolate (#4)	4151
Medium brown (#6)	4152
Red	4153
Yellow	4154
Green	4157
Orange	4159
Golden blonde	4160



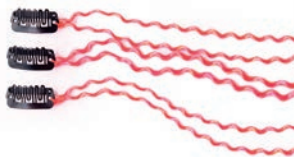
3 Piece Straight Strands, 35cm:

White	4663
Green	4664
Purple	4665
Aqua	4667
Chilli Red	4666



3 Piece Snake Curl Strands, 35cm:

Green	4669
White	4670
Purple	4671
Light gold blonde (#10.3)	4672
Firecracker (#5.3, 8.4 + 9.3)	4673
Gold blonde (#10)	4674
Chilli red	4675
Orange mix	4676
Yellow red	4677



May Dreadlock 3 Piece Strands, 35cm:

Blue	4686
Aubergine (#1 + 6.2)	4687
Chilli red	4688



Naomi Spiral Curl 3 Piece Strands, 35cm:

Yellow red	4678
Purple	4679
Butterscotch (#8 + 10.3)	4680
Light gold blonde (#10.3)	4681
Firecracker (#5.3, 8.4 + 9.3)	4682
Gold blonde (#10)	4683
Chocolate milk (#8 + 9)	4684
Multitone	4685



Zelene Lightwave 3 Piece Strands, 35cm:

Red/White	4689
Blue/Dark blue	4690
Dark rust (#8.3)	4691
Spring honey (#9)	4692



EMMA HAIR2GO: Synthetic, long pony tail, ideal for upstyles, including special brush, 50cm long

Light gold blonde (#10.3)	4655
Brown blonde (#8)	4657
Chestnut (#7.4)	4659
Medium Brown (#5)	4660
Dark rust (#8.3)	4658
Dark chocolate (#6)	4661
Black (#1)	6031
Platinum blonde (#12)	6138
Gold blonde (#10)	4654



Leather Clip-in feather hair extensions: natural colour feathers attached to a leather thong for quick & easy temporary installation using a clip.



Black
7221

White
7222

Dark brown
7223



Numbers in brackets are the closest matching CDC tint number. More than one number indicates the different CDC colours used to make the extension.

Hairpiece on Claw Clip:	
Butterscotch (#8 + 10.3)	4698
Dark rust (#8.3)	4699
Spring honey (#9)	4701
Firecracker (#5.3, 8.4 + 9.3)	4702
Chestnut (#7.4)	4705



Scrunchie:	
Firecracker (#5.3, 8.4 + 9.3)	4695
Dark rust (#8.3)	4697



EMMA Braided Scrunchie:	
White	4742
Red	4743
Mauve	4744
Orange	4745
Blue	4746



EMMA Braided Band:	
White	4747
Red	4748
Mauve	4749
Orange	4750
Blue	4751



5-in-1 Feather Hair Extension: consist of 5 different length, colour & texture feathers bound together for installation in one chosen position. Colours of the various feathers have been chosen to complement the main colour. Supplied with a micro-ring for quick & easy installation.

Blue	7218
Hot pink	7214
Lavender	7219
Light pink	7220
Lime green	7216
Purple	7215
Turquoise	7213
Yellow	7217



Set-of-6 Feather Hair Extension: consist of 6 different length, colour & texture feathers for individual installation in six or less chosen positions. Install them individually or group several together to get the effect you desire. Colours have been chosen to complement the main colour. Supplied with micro-rings for quick & easy installation.

Blue	7203
Hot pink	7201
Lavender	7202
Light pink	7264
Lime green	7204
Natural light brown	7266
Natural black & white	7206
Purple	7208
Red	7205
White with red	7210
White With hot pink	7209
Natural brown	7207

EMMA, 48cm long: FAST HAIR clip-on full extension kits. Special Fibre, can be curled (with caution) up to 180°C. Kit includes: 1 x piece 30cm wide, 1 x 17cm wide, & 2 x 6cm wide; 2 clips & a comb

	Wavy	Straight
Gold blonde (#10)	5460	5646
Light gold blonde (#10.3)	5461	5647
Auburn/black (#1 + 6.6)	5462	
Chocolate blonde (#7)	5464	5648
Butterscotch (#8 + 10.3)	5465	5645
Aubergine (#1 + 6.2)	5466	5644
Black (#1)	6032	6033
Platinum blonde (#12)		6140
Firecracker (#5.3, 8.4 + 9.3)	5467	
Mahogany (#6.4)	5468	

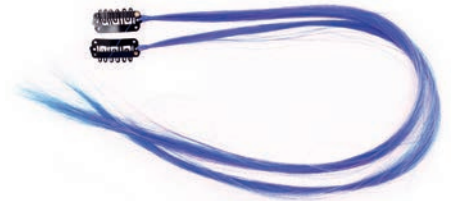
Numbers in brackets are the closest matching CDC tint number. More than one number indicates the different CDC colours used to make the extension.



Numbers in brackets are the closest matching tint CDC number. More than one number indicates the different CDC colours used to make the extension

CLIP-ON HAIR EXTENSION, FASHION HAIR, 2 PIECES EACH ON A CLIP, 45cm

- Lime Green 5472
- Orange 5474
- Pink 5475
- Red 5476
- White 5477



1 piece 65cm (25 inch) synthetic hair extension clip-in piece, ideal to volumise hair

- Light gold blonde (#10.3)
- Chocolate blonde (#7)
- Butterscotch (#8 + 10.3)
- Firecracker (#5.3, 8.4 + 9.3)
- Gold blonde (#10)

- WAVY**
- 5667
 - 5669
 - 5670
 - 5671
 - 5668



- Light gold blonde (#10.3)
- Gold blonde (#10)
- Chocolate blonde (#7)
- Butterscotch (#8 + 10.3)
- Dark chocolate (#6)
- Platinum Blonde

- STRAIGHT**
- 5674
 - 5675
 - 5676
 - 5677
 - 5678
 - 5680



EMMA - Crown pony attachment, straight, with ribbon tie, 45cm

- Golden Blonde (#10) 9020
- Black (#1) 9017
- Medium Brown (#5) 9018
- Light Golden Blonde (#10.3) 9019
- Cappuccino (#4) 9015



EMMA - Crown pony attachment, curly, with ribbon tie, 45cm

- Dark Chocolate (#6) 9022
- Black (#1) 9023
- Medium Brown (#5) 9024
- Light Golden Blonde (#10.3) 9025
- Cappuccino (#4) 9021
- Golden Blonde (#10) 9026



EMMA CHAMELEON CLIP-ON'S - 2 pieces

Straight	45cm
Hot Pink	7424
Soft Pink	7451
Purple	7452
Orange	7453
Yellow	7454
Red	7455
Blue	7456
Grey	7457



and in CHAMELEON FRINGE - 1 piece

Straight	Fringe
Hot Pink	7458
Soft Pink	7459
Purple	7460
Orange	7461
Yellow	7462
Red	7463
Blue	7464
Grey	7465



	Fringe	45cm
Aubergine (#1 + 6.2)	4351	
Red/Black (#1 + 6.6)	4353	
Black (#1)		6030
Butterscotch (#8 + 10.3)	4344	4321
Cappuccino (#4)	4324	
Chestnut (#7.4)	4350	4338
Chocolate blonde (#7)	4343	4316
Dark chocolate (#6)	4352	4340
Dark purple	4381	4314
Dark rust (#8.3)	4348	4336
Firecracker (#5.3, 8.4 + 9.3)	4347	4317
Ginger blonde (#7.3)	4342	4333
Gold blonde (#10)		4313
Green/Yellow	4355	4320
Light blue	4329	
Light gold blonde (#10.3)	4323	4315
Lilac	4541	
Lime	4543	4549
Lime green neon	4326	4356
Mahogany (#6.4)	4325	4319
Medium brown (#5)	4349	4337
Navy	4538	4544
Orange	4542	4548
Pink	4328	
Platinum Blonde (#12)	6136	6137
Purple		4357
Red	4539	
White	4540	4546

Numbers in brackets are the closest matching CDC tint number. More than one number indicates the different CDC colours used to make the extension.



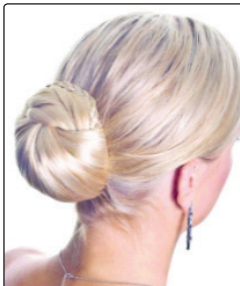
FAST BUN - the quick & easy way to do a bun - no fuss or fiddling



Black	7479
Cappuccino	7480
Dark Chocolate	7481

*Flowers excluded

FAST BUN with small braid



Black	7484
Cappuccino	7486

EMMA 8 piece clip-on pieces, 57cm, synthetic hair

Consists of: 4 x 3cm & 4 x 16cm width pieces:

Straight	
Golden Blonde (#10)	9310
Cappuccino (#4)	9315
Chocolate Blonde (#7)	9316
Light Golden Blonde (#10.3)	9314
Medium Brown (#5)	9313



Consists of: 4 x 3cm & 4 x 16cm width pieces:

Wavy	
Dark Chocolate (#6)	9304
Golden Blonde (#10)	9303
Cappuccino (#4)	9308
Light Golden Blonde (#10.3)	9307
Medium Brown (#5)	9306



Hairpiece on a Claw Clip, Medium Length, straight, 35cm:

Cappuccino (#4)	8225
Dark Chocolate (#6)	8226
Platinum Blonde (#12)	8228
Medium Brown (#5)	8229
Gold Blonde (#10)	8230



Hairpiece for Crown, with clips, straight, 35cm

Cappuccino (#4)	8243
Dark Chocolate (#6)	8244
Black (#1)	8245
Platinum Blonde (#12)	8246
Medium Brown (#5)	8247
Light Gold Blonde (#10.3)	8248
Gold Blonde (#10)	9042



Hairpiece on a Claw Clip, Long Length, straight, 45cm:

Cappuccino (#4)	8231
Dark Chocolate (#6)	8232
Black (#1)	8233
Medium Brown (#5)	8235



Hairpiece on a wire, enables you to mould hair where you need it most, 30cm

Dark Chocolate (#6)	8250
Black (#1)	8251
Light Gold Blonde (#10.3)	8254



Hairpiece on a Claw Clip, Extra Long Length, Wavy, 65cm:

Cappuccino (#4)	8237
Dark Chocolate (#6)	8238
Black (#1)	8239
Platinum Blonde (#12)	8240
Light Gold Blonde (#10.3)	8242



EMMA 8 piece clip-on piece, 70cm, synthetic hair

Consists of: 4 x 3cm & 4 x 16cm width pieces:

Straight	
Black (#1)	9319
Golden Blonde (#10)	9317
Cappuccino (#4)	9322
Chocolate Blonde (#7)	9323
Light Golden Blonde (#10.3)	9321



EMMA Clip-in Fringe

Black (#1)	9887
Butterscotch (#8 + 10.3)	9892
Cappuccino (#4)	9885
Chocolate Blonde (#7)	9891
Dark Chocolate (#6)	9886
Golden Blonde (#10)	9890
Light Golden Blonde (#10.3)	9889
Medium Brown (#5)	9888
Platinum Blonde (#12)	9893



As seen on the runways, the EMMA FISHTAIL

60cm long, clip-in

Black (#1)	9513
Butterscotch (#8 + 10.3)	9518
Cappuccino (#4)	9511
Chocolate Blonde (#7)	9517
Dark Chocolate (#6)	9512
Golden Blonde (#10)	9516
Light Golden Blonde (#10.3)	9515
Medium Brown (#5)	9514

