

# Scissors



ICE-BLADE

MATSUKA

SINCE 1904  
FROMM

diane  
"FROMM"

Image courtesy of OLIVIA GARDEN®

**PRE STYLE** - Professional scissors made of stainless steel.  
Models in polished or satin finish. One blade micro-serrated.

**PRE STYLE RELAX**  
5.0 inch **4225**  
5.5 inch **4246**  
6.0 inch **4247**



**PRE STYLE RELAX 28**  
OFFSET THINNER  
5.5 inch **4248**  
28 teeth

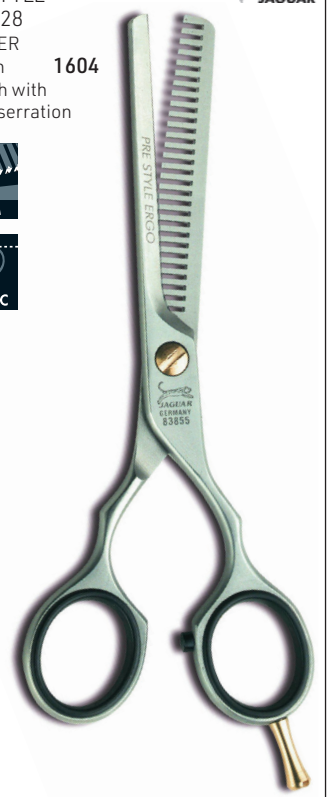


Offset design for ergonomic handle position & relaxed working. Polished finish.

**PRE STYLE ERGO**  
4.5 inch **1600**  
5.0 inch **1601**  
5.5 inch **1602**  
6.0 inch **1603**



**PRE STYLE ERGO 28**  
THINNER  
5.5 inch **1604**  
28 teeth with micro-serration



Classic design for a traditional feeling during cutting.

**PRE STYLE SLICE from JAGUAR**

**PRE STYLE ERGO SLICE CLASSIC**  
Unserrated, professional scissors, satin finish

5.0 inch **13951**  
5.5 inch **13952**  
6.0 inch **13953**



**PRE STYLE RELAX SLICE**  
Offset handle, non-serrated, satin finish

5.0 inch **13954**  
5.5 inch **13955**  
6.0 inch **13956**



**PRE STYLE PINK**  
5.5 inch **4230**



**PRE STYLE 28 PINK**  
THINNER  
5.5 inch **4231**  
28 teeth with micro-serration



High quality coating for protection from nickel allergy. Classic design a traditional feeling during cutting.

## WHITE LINE

Long-lasting sharpness due to the use of forged, high-quality steel & the ice-tempering process for solid hardness. Innovative, durable, high-tech coating for individual, unmistakable scissor design. Well suited to slice cutting thanks to hollow grinding & honing.

JP10  
OFFSET  
5.25 inch **3549**  
5.75 inch **3550**



JAGUAR

JP38  
OFFSET THINNER  
5.25 inch **3552**  
38 teeth with fine  
V-teeth serration



WHITE LINE

JAGUAR CHARM - Striking design & broad finger support, non-serrated, offset

CHARM  
5.25 inch **10373**  
5.75 inch **10374**



JAGUAR

CHARM 38  
5.5 inch **10375**  
38 thinning teeth



WHITE LINE

SATIN  
5.0 inch **2235**  
5.5 inch **2236**  
6.0 inch **2237**  
6.5 inch **2238**  
7.0 inch **6374**



JAGUAR

High quality, extreme black metallic coating. Protection for those with nickel allergy.

NEW! From JAGUAR  
TIMELESS BLACK  
5.5 inch **16197**  
6.0 inch **16196**



JAGUAR

NEW!

THINNER  
43 thinning teeth with fine V-teeth  
serration for a pleasantly smooth feel  
& a precise cut.  
6.0 inch **16195**



NEW!

WHITE LINE

From JAGUAR  
TIMELESS  
Offset design, slim  
blade with tapered point  
5.5 inch **13810**  
6.0 inch **13939**



5.5 inch shear & 6.0 inch thinner **P049**  
6.0 inch shear & 6.0 inch thinner **P048**

THINNER  
6.0 inch **13940**  
43 teeth



WHITE LINE

JAGUAR



Symmetrical position of the two finger rings delivers a traditional cutting sensation.



The offset position of the two scissor rings relieves tension in the muscles of the arm, neck & shoulders. Cutting becomes comfortable & effortless.



Short, downward-angled thumb handle for ergonomic working posture.



The angled thumb-ring reduces friction & pressure marks & gives secure control of the scissors.



The rotating insert-ring moves with the thumb. Friction & pressure marks are prevented without affecting the sense for the scissors.



High-quality coating prevents direct contact between the skin & the steel for protection in case of nickel allergy.



Guarantees the ideal cutting angle in any position, thereby delivering a precise, straight cut over the entire length of the blade.



V-teeth serration of the thinning teeth provides a smooth, soft feeling during closing. Hair is cut securely & precisely without slippage.



Classic blades with a flat cutting edge angle for excellent sharpness. Micro-serration on one blade avoids slippage of the hair.



Slightly curved thinning teeth fall flush against the lower cutting edge, which is also serrated, for the very highest standards in precision & cutting feel.

## WHITE LINE

Long-lasting sharpness due to the use of forged, high-quality steel and the ice-tempering process for solid hardness. Innovative, durable, high-tech coating for individual, unmistakable scissor design. Well suited to slice cutting thanks to hollow grinding & honing.

Professional, stainless steel, micro-serration on one blade, classic design

**SILVER ICE**  
5.5 inch **4256**  
6.0 inch **4257**  
6.5 inch **4258**  
7.0 inch **6376**



**SILVER ICE THINNER**  
6.5 inch **4260**



JAGUAR

**CM40 THINNER**  
5.0 inch  
40 teeth **1572**



**CM46 THINNER**  
6.5 inch  
46 teeth **6206**



JAGUAR

WHITE LINE

**SATIN PLUS**  
4.5 inch **1618**  
5.0 inch **1619**  
5.5 inch **1620**  
6.0 inch **1621**



**SATIN PLUS E offset**  
5.5 inch  
2311



JAGUAR

**SATIN 27 THINNER**  
5.5 inch  
27 teeth **4254**



**SATIN 28/28 DOUBLE-SIDED THINNER**  
5.0 inch  
28 teeth **3805**



**SATIN 30/30**  
6.0 inch  
30 teeth **6375**



JAGUAR

WHITE LINE

**SATIN PLUS 40 THINNER**  
5.0 inch  
40 teeth **1622**



**SATIN PLUS 46 THINNER**  
6.5 inch  
46 teeth **1623**



**SATIN PLUS E 40 OFFSET THINNER**  
5.0 inch  
40 teeth **7301**



**SATIN PLUS E 46 OFFSET THINNER**  
6.5 inch  
46 teeth **2239**



JAGUAR

WHITE LINE

**WHITE LINE**

Long-lasting sharpness due to the use of forged, high-quality steel and the ice-tempering process for solid hardness. Innovative, durable, high-tech coating for individual, unmistakable scissor design. Well suited to slice cutting thanks to hollow grinding & honing.


**NEW! FROM JAGUAR! PASTELL PLUS OFFSET**

High quality metallic coating. Protection for those with nickel allergy. Offset design for ergonomic handle position & relaxed working.

**NEW! FROM JAGUAR! PASTELL PLUS CLASSIC**

High quality metallic coating. Protection for those with nickel allergy. Classic design for a traditional feeling during cutting.


**PASTELL PLUS OFFSET ROSE**  
5.5 inch **16194**



**COATED**  
**OFFSET**

**NEW!**


**PASTELL PLUS OFFSET 40 ROSE**  
40 thinning teeth with fine V-teeth serration for a pleasantly smooth feeling & a precise cut.  
5.5 inch **16193**



**PRISM**  
**COATED**  
**OFFSET**

**NEW!**

WHITE LINE



**PASTELL PLUS ROSE**  
5.5 inch **16192**



**COATED**  
**CLASSIC**

**NEW!**

**PASTELL PLUS 40 ROSE**  
40 thinning teeth with fine V-teeth serration for a pleasantly smooth feeling & a precise cut.  
5.0 inch **16191**



**PRISM**  
**COATED**  
**CLASSIC**

**NEW!**

WHITE LINE



**PASTELL PLUS OFFSET**

High-quality metallic coating, protection for those with nickel allergy. Now available in offset design for ergonomic handle position & relaxed working.

<p>Shears <b>CANDY</b> 5.5 inch <b>13557</b></p>  <p><b>COATED</b> <b>OFFSET</b></p>	<p>Thinner, 40 teeth <b>CANDY</b> 5.0 inch 40 teeth with fine V-teeth serration for a smooth feeling &amp; a precise cut <b>13562</b></p>  <p><b>PRISM</b> <b>COATED</b> <b>OFFSET</b></p>	<p>Shears <b>LAVA</b> 5.5 inch <b>13559</b></p>  <p><b>COATED</b> <b>OFFSET</b></p>	<p>Thinner, 40 teeth <b>LAVA</b> 5.0 inch <b>13561</b></p>  <p><b>PRISM</b> <b>COATED</b> <b>OFFSET</b></p>
<p>Shears <b>VIOLA</b> 5.5 inch <b>13558</b></p>  <p><b>COATED</b> <b>OFFSET</b></p>	<p>Thinner, 40 teeth <b>VIOLA</b> 5.0 inch <b>13560</b></p>  <p><b>PRISM</b> <b>COATED</b> <b>OFFSET</b></p>	<p>Shears <b>MINT</b> Offset 5.5 inch <b>14373</b></p>  <p><b>COATED</b> <b>OFFSET</b></p>	<p>Thinner, 40 teeth <b>MINT</b> Offset 5.5 inch <b>14374</b></p>  <p><b>PRISM</b> <b>COATED</b> <b>OFFSET</b></p>
<p>Classic 5.5 inch (not shown) <b>6372</b></p>  <p><b>CLASSIC</b></p>	<p>Classic 5.5 inch (not shown) <b>6373</b></p>  <p><b>CLASSIC</b></p>	<p>Classic 5.5 inch (not shown) <b>14457</b></p>  <p><b>CLASSIC</b></p>	<p>Classic 5.0 inch (not shown) <b>14458</b></p>  <p><b>CLASSIC</b></p>

WHITE LINE



Moonlight Garden  
5.5 inch  
14461



Jaguart



WHITE LINE

Sweet Daisy  
5.5 inch  
14462



Jaguart



WHITE LINE

Mystic Rose  
5.5 inch  
14463



Jaguart



WHITE LINE

Golden Blossom  
5.5 inch  
14464



Jaguart



WHITE LINE

JAGUAR SMART - Crane design for uncompromisingly ergonomic working

SMART  
5.0 inch 8272  
5.5 inch 8273



SMART 39  
5.5 inch 8274  
39 thinning teeth



WHITE LINE

**SILVER LINE**

Very long-lasting sharpness due to the use of forged, premium steel. Due to ice-tempering, the steel has a high hardness level making it more durable & able to hold its sharpness for a longer time.

**CJ4 PLUS**  
**OFFSET**  
 5.0 inch **6362**  
 5.5 inch **6363**  
 6.0 inch **6364**  
 6.5 inch **NEW! 16200**  
 7.0 inch **NEW! 16199**



SILVER LINE

Abrasion-resistant, hard, black ceramic coating. Protection for those with nickel allergies

**CJ4 PLUS**  
**CERAMIC FUSION**  
 5.0 inch **2867**



SILVER LINE

**CJ40 PLUS**  
 5.5 inch **6365**  
 40 teeth



SILVER LINE

**CJ43 PLUS**  
 43 thinning teeth with fine V-teeth serration for a pleasantly smooth feel & a precise cut.  
 6.0 inch **16198**



SILVER LINE

**CJ3 - Crane Design**  
 5.0 inch **7298**  
 5.5 inch **1570**  
 6.0 inch **6360**



**CM36**  
 5.25 inch **6361**  
 36 teeth



SILVER LINE

**FAME**  
 Offset design for ergonomic handle position & relaxed working. Finger-rings angled in opposite directions are perfect for the hand's natural position & guarantee extremely pleasant working posture & perfectly-controlled scissor movement  
 5.5 inch **11398**  
 6.0 inch **11399**



SILVER LINE

**FAME 42**  
 42 Thinning teeth with fine V-teeth serration for a pleasant smooth feeling  
 5.75 inch **11400**



SILVER LINE



## SILVER LINE

Very long-lasting sharpness due to the use of forged, premium steel. Due to ice-tempering, the steel has a high hardness level making it more durable & able to hold its sharpness for a longer time.

### GRACE

Combine ergonomics & elegance, slightly convex blades, ideal for slice-cutting  
5.5 inch **9912**



JAGUAR

Perfect combination of ergonomic design & powerful blades. Short-thumb handle, convex blades, ideal for slice cutting. Classic & offset design

### OCEAN

5.25 inch **4226**  
5.75 inch **4227**



JAGUAR

### OCEAN 32

Thinner  
6.0 inch **4228**  
32 teeth



SILVER LINE

### PERFECT

Gold plated handles

5.0 inch **6367**  
5.5 inch **6368**  
6.0 inch **6369**



JAGUAR

SILVER LINE

Part of the Silver Line, these extraordinarily designed scissors are modern in look, with outstanding sharpness, durability & cutting action

Durable high quality titanium protection for those with nickel allergies

5.5 inch  
Fame Style-It,  
Rose Gold  
**12966**



JAGUAR

5.5 inch  
Fame Rock-It,  
Anthracite  
**12967**



SILVER LINE

### CONCAVE, CS

5.0 inch **1574**  
5.75 inch **1575**



JAGUAR

SILVER LINE

### CONCAVE, TB offset

5.0 inch **1576**  
5.75 inch **2491**



Diamond-like, non-abrasive, deep-blue, hard titanium, nitrate coating, extremely long cutting life. Protection for those with nickel allergies.



JAGUAR

SILVER LINE



**GOLD LINE**

Very long-lasting sharpness due to the use of forged, premium steel. Due to ice-tempering, the steel has a high hardness level making it more durable & able to hold its sharpness for a longer time.

Durable, innovative, high-tech coating, offset, angled thumb-ring

Angled thumb-ring for relaxed working posture, without pressure marks

Slightly curved blades for incredible, smooth cutting sensation

Abrasion-resistant hard, black ceramic coating for smooth, pleasant cut. Extremely long cutting life. Protection for those with nickel allergy. Offset, angled thumb-ring.

XENOX  
5.5 inch **5707**  
6.0 inch **5708**



GOLD LINE

XENOX DESIGN  
with 22 karat gold plating insert  
Offset design & angled thumb-ring  
5.5 inch **12221**  
6.0 inch **12222**



GOLD LINE

DIAMOND E  
CERAMIC FUSION  
5.0 inch **2865**  
5.5 inch **2866**



GOLD LINE

DIAMOND  
5.0 inch **1579**  
5.5 inch **1580**  
6.0 inch **1581**  
6.5 inch **14094**



DIAMOND 28  
28 teeth  
5.5 inch **1582**  
6.0 inch **14095**



GOLD LINE

GOLDWING  
Additionally angled finger-rings ensure optimum ergonomic finger positioning  
5.5 inch **8269**  
6.0 inch **8270**



GOLDWING 34/34  
34 curved thinning teeth with tiny V shapes & special additional serrations on the lower side for the very highest standards in precision cutting  
5.75 inch **8271**



GOLD LINE

**GOLD LINE**

Very long-lasting sharpness due to the use of forged, premium steel. Due to ice-tempering, the steel has a high hardness level making it more durable & able to hold its sharpness for a longer time.

Crane design, angled thumb-ring, rotating thumb-ring insert to prevent friction & pressure marks, curved blade for ideal cutting angle in any position.

Traditional Japanese craftsmanship meets Jaguar production expertise. Special cobalt alloy steel for a long cutting life. Offset design & angled thumb ring for ergonomic handle position & relaxed working.

**FINESSE**  
curved blades  
5.5 inch **2244**



GOLD LINE



**KAMIYU**  
5.75 inch **2247**  
6.5 inch **2248**



**KAMIYU 33**  
THINNER  
6.0 inch **2245**  
33 bent teeth with fine V-teeth serration



GOLD LINE

**LANE**  
Convex blades, ergonomic handle & revolutionary flat SMART SPIN CLICK SYSTEM which allows precision fine-tuning with just a click  
5.5 inch **9909**



**LANE 33**  
33 thinning teeth with the finest V shape & additional special teeth on the lower side  
5.75 inch **9910**



GOLD LINE

**SILENCE**  
Unusual design, ideal for slice-cutting, angled thumb-hole guarantees easy, fatigue-free working. Convex blades, ergonomic handle & revolutionary flat SMART SPIN CLICK SYSTEM which allows precision fine-tuning with just a click  
5.5 inch **10377**



**SILENCE 34**  
34 tapered teeth with extremely-fine prism interlocking  
5.75 inch **10379**



GOLD LINE

**BLACK LINE**

Micro-carbide steel delivers practically permanent sharpness. Extreme durability & high cutting-edge stability. High-end blade down to one hundredth of a millimeter thanks to CNC grinding technology. Convex blades with fully-integrated cutting edges for maximum sharpness.

Micro Carbide Steel, simple, elegant & artful - a combination of top-notch technology & perfect ergonomics that delivers everything the user could want. Offset & angled thumb-ring for offset & relaxed working.

Elegant & charismatic to meet the most sophisticated demands. Curved blade for ideal cutting in any position, rotating thumb-ring, offset.

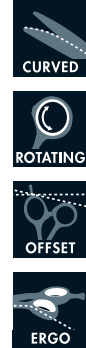
VISION  
5.25 inch 7282  
5.75 inch 7283



BLACK LINE



EVOLUTION  
5.75 inch 7317



BLACK LINE



EURO-TECH  
Euro-Tech 5.75 inch  
Micro Carbide steel for  
permanent sharpness  
2240



BLACK LINE



EVOLUTION FLEX  
Technical refinement in a  
highly polished finish.  
Curved blade for the ideal  
cutting angle in any position.  
Moveable thumb-ring,  
offset design  
5.75 inch  
14372



BLACK LINE



PROMOTION SCISSORS

BLUE POOL  
5.0 inch 10382  
5.5 inch 10383



RED MUSIC  
5.0 inch 10384  
5.5 inch 10385



YELLOW COCKTAIL  
5.0 inch 10386  
5.5 inch 10387



WHITE LINE

BASIC SCISSOR SETS

Scissor Sets for Students - Get Ready

Includes scissor (5.5 inch),  
thinner (5.5 inch),  
razor, blades, comb  
& case. Satin Finish  
Classic Ergo

- 14452 Relax, offset
- 14453 Ergo Slice, non-serrated
- 14455 Relax Slice, non-serrated
- 14456 Relax, LEFT
- 14454



JAGUAR EFFECTS SETS

Student Kits - TAKE IT!

Contains:  
• Scissor 5.5 inch & thinner (28 teeth)  
• R1M razor with metal blade  
• 10 blades  
• Cutting comb  
• Trendy TAKE IT case

- DEAL 1  
Prestyle Ergo Satin  
5.5 inch scissor, 5.5 inch thinner  
One blade micro-serrated  
12223
- DEAL 2  
Prestyle Relax Satin  
5.5 inch scissor, 5.5 inch thinner  
Offset design, one blade micro-serrated  
12224
- DEAL 3  
Prestyle Relax Left  
5.75 inch scissor, 5.25 inch thinner  
Offset design, thinner (40 teeth)  
12225



**JAGUAR - BLACK IS BEAUTIFUL**  
All scissors come with a bracelet

From Jaguar - Blooms Collection (limited edition)

- Innovative, durable, high-tech coating for individual, unmistakable scissor design
- Protection for those with nickel allergy
- Offset design for ergonomic handle position & relaxed working
- Hollow grinding & honing of both cutting edges for good slice cutting & outstanding cutting action



WHITE LINE

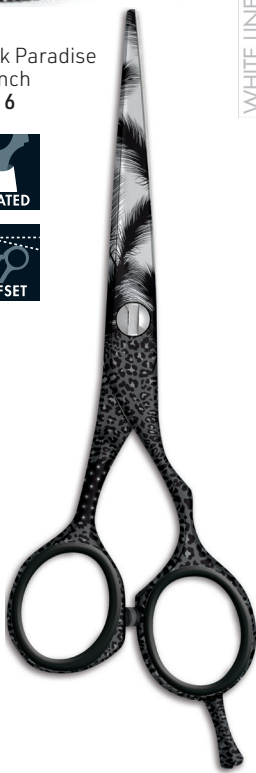
Black Patty  
5.5 inch  
11413



Black Venezia  
5.5 inch  
11415



Black Paradise  
5.5 inch  
11416



Flower Field  
5.5 in with  
FREE scarf  
12080



Rose Garden  
5.5 inch with  
FREE scarf  
12079



Shear holders

Glitter finish, easy-to-clean surface, protection for those with nickel allergies

Scissor Holder, black  
11600  
(tools not included)



Scissor Holder, white  
11604  
(tools not included)



Scissor Oil  
1625



DIVA  
5.0 inch 6353



VAMP  
5.0 inch 6355  
5.5 inch 6356



GOLD LINE



**LEFT**  
 Cutting with no compromise - especially for left-handed stylists. Developed scissors in different quality & classes. For natural movements, a relaxed working posture & an accurate cut.

**JAGUAR SATIN THINNER**

5.25 inch **1617**  
 40 teeth



WHITE LINE

Offset design for ergonomic handle position & relaxed working

**DIAMOND E LEFT**  
 5.25 inch **4224**  
 5.75 inch **7295**



GOLD LINE

**DIAMOND LEFT**  
 CC39  
 39 teeth with  
 fine V-teeth  
 5.25 inch **7296**



GOLD LINE

Angled thumb-ring, slightly convex scissor blades. Ideal for slice-cutting, offset

**CJ4 PLUS LEFT**  
 5.75 inch **4405**



SILVER LINE

**JP 10 LEFT**  
 5.25 inch **3806**



WHITE LINE

**JP 38 LEFT**  
 38 teeth with fine  
 V-teeth  
 5.25 inch **5711**



WHITE LINE

Ergonomic handle position, offset handle for relaxed working. Serrated. Satin finish

Student Shears by FROMM

**PRE STYLE  
 RELAX LEFT**  
 5.25 inch **3662**  
 5.75 inch **7297**



**PRE STYLE  
 RELAX 40 LEFT**  
 40 thinning teeth  
 Offset, satin finish  
 5.25 inch **6226**



**TRANSFORM**  
 Japanese steel,  
 semi-convex edge,  
 blue finger-rings  
 5.75in LEFT  
**14947**



FROMM

**JAY2 COLLECTION**

For the trendy, brand-aware hairdresser. Polished finish, patented screw, durable sharpness, honed blades perfect for slice-cutting. Made in Germany, by Jaguar



**JAY<sup>2</sup>**  
 JAY2 #3.1 offset  
 5.25 inch **3809**



**JAY<sup>2</sup>**  
 Non-serrated, economy,  
 great value  
 5.5 inch **11151**  
 6.0 inch **11152**



Thinner  
 6.0 inch **11153**



**JAY<sup>2</sup>**  
 JAY2 #5.1 offset  
 5.0 inch **4077**

**ICE-BLADE - Economical, affordable, ideal for apprentices & professionals**

Japanese stainless steel, non-serrated

5.5 inch  
 Black **14203**



5.5 inch  
 Grey **14204**



5.5 inch  
 Rose Gold **14205**



**ICE-BLADE**

The right combination of the two is even better. Hair Health & Beauty is excited to carry the TONDEO range for the most discerning of hairdressers. For more than 80 years, TONDEO is one of the world's leading brands of scissors. The scissors & razors are convincing in terms of their technology & design. A combination of precise hand-work, the use of state-of-the-art machines, technologies & years of know-how allow high quality, unique shears to be created. All made in Solingen, Germany.

**TONDEO A-LINE**

The A-LINE scissors are unique in their class as multi-talents for many techniques. Unilateral micro-serrating ensures a precise cut, keeping hair from sliding forward.

**PRIMO - Classic**

Quality through tradition with fine, ground cutting edges. Made from nickel-unalloyed stainless chrome steel, polished surface Classic

5.5 inch **11200**



5.5 inch thinning, with micro serration 33 teeth **11203**



**SPIDER**

Fashionable scissors for the price-conscious hairdresser. Straight blade shape made from unalloyed nickel, hardened, stainless chrome steel, adjustable screw Shine Classic

5.0 inch **11196**



Shine Offset 6.0 inch **11198**



**PRIMO - Offset**

5.5 inch **11201**  
6.0 inch **11202**



5.5 inch thinning, 33 teeth **11204**

5.75 inch thinning, 39 teeth **11205**



**SLIM**

Light standard slice-cutting edge with polished facet. Thinning with milled teeth with prism, polished surface Classic

5.5 inch **11315**



5.75 inch thinning 36 teeth **11316**



**LEFT - hardened steel without nickel alloy, stainless, polished**

5.5 inch left, classic **11206**



**LEFT**

5.25 inch left thinning milled teeth with prism **11207**



**LEFT**

5.25 inch thinning 32 teeth **11339**





**TONDEO C-LINE**

Offering precision cutting. The C-LINE series provides an alternative for all cutting techniques.

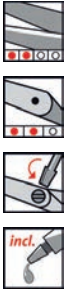


**Century Slice**

Classic scissors for the quality-conscious hairdresser with polished facet & hollow grinding for smooth movement. Unalloyed nickel, hardened stainless chrome steel

**Slice Classic**

5.5 inch **11311**



**Slice Offset**

5.5 inch **11312**



**Classic**

5.25 inch  
Thinning 40 teeth  
**11313**

**Classic**  
5.75 inch  
Thinning 36 teeth  
**11314**



**Tchiro - one side micro-fine serration.**

Proportionally shorter blade with widely separated closing points to provide relief to muscles of the thumb

125 Tchiro

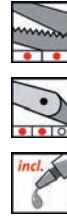
5.0 inch

**11209**

145 Tchiro

5.75 inch

**11210**



**Vegas**

Sturdy scissor for the quality-conscious hairdresser, slice cutting edge with polished facet & polished hollow grinding for smooth movement, hand polished

**Slice Classic**

5.5 inch **11215**



**Slice Classic**

5.5 inch **11216**

Thinning 33 teeth



**Offset**

5.0 inch

**11211**

5.5 inch

**11212**



**Offset**

5.75 inch

Thinning 40 teeth

**11214**



SOLINGEN  
**TONDEO**

**MADE IN GERMANY**  
Solingen

## TONDEO E-LINE

The E-LINE scissors are all-round scissors with particular aptitude for sharpness & precision. Due to the polished, razor-sharp slice blades, these scissors can slice, feather & point without pushing the hair forward

SOLINGEN  
**TONDEO**

### Opus

All-round scissor with long & stable blade.

Ergonomic handle with integral finger hook

Offset

5.5 inch **11225**



### Orea

Robust all-round product, stable dagger blade. Pronounced offset or double ergonomic shape for relaxed working, super slice cutting edge

Offset

5.5 inch **11218**

6.0 inch **11219**



### Orea

Offset

5.75 inch

Thinning 35 teeth

**11220**



## TONDEO S-LINE

Pure inspiration for pure cutting pleasure. Made from extremely hard ball-bearing steel with top cutting characteristics. Suitable for all cutting techniques.

### Supra

An elegant classic for fine cuts. Super-sharp ultra-slice DGT cutting edge guarantees outstanding slice properties with reduced feed rate

Classic

5.5 inch **11308**

6.0 inch **11309**



### Victory

Amazing design with an invisible screw in the upper shank for cutting without obstruction, optimal smooth operation

Offset

5.5 inch **11226**



### Craene

Energetic cutting with ergonomics in a new dimension. An elegantly curved blade in the crane form facilitates a relaxed posture when working

Offset

6.0 inch **11310**



### Seven

Elegant length for great efficiency. Made from wear-resistant titanium with a nitride finish, non-allergenic

Offset

7.0 inch **11208**



## TONDEO PREMIUM LINE

Top quality scissors that set the standards for function & design. The entire know-how & experience of Tondeo technicians & industrial designers came together for this line's development.

### ZENTAO - offset, slim dagger blade

The journey is the reward. Elegant design with an invisible screw system that works without obstruction, extremely sharp, integrated finger-rest

Offset

6.0 inch **11341**

Offset

6.5 inch **11340**



**MADE IN GERMANY**  
**Solingen**

## TONDEO CUT A-LINE

Offering precision cutting. The C-LINE series provides an alternative for all cutting techniques.

SOLINGEN  
**TONDEO**

### SPOTS SET

(1 pair hair scissors, 1 pair thinning scissors, 1 Comfort Cut razor, 10 blades)

Scissors available in Offset only, non-serrated

Includes:

1 x 5.5 inch scissor

1 x 5.5 inch thinner

1 x Comfort razor including 10 blades

11682



Spare blades,  
10/pkt  
12047



### SPIDER SHINE SET

(1 pair hair scissors, 1 pair thinning scissors, 1 Comfort Cut including 10 blades, 1 tool bag)

Scissors available in Offset, non-serrated

Includes:

1 x 5.5 inch scissor, offset

1 x 5.25 inch thinner

1 x Comfort razor including 10 blades

1 x holster

11685



Spare blades,  
10/pkt  
12047



### Tondeo economy Primo set, offset

Consists of:

5.5 inch scissor, offset

5.5 inch thinner, offset

Pouch

P0014



### Primo, classic

Consists of:

5.5 inch scissor, classic

5.5 inch thinner, classic

Pouch

P0015



**Olivia Garden - SilkCut Fantasy Shear Collection**

- micro-adjustable tension knob
- ergonomic handle design
- ultra-sharp blade edge
- handmade powerful razor sharp convex blade
- comfortable offset handle with finger-rest
- comfort silencer



5.0 inch shear & 6 inch thinner with case  
**14174**

5.75 inch shear & 6 inch thinner with case  
**14175**

6.5 inch shear & 6 inch thinner with case  
**14202**



  
Olivia Garden®

**NEW! From Olivia Garden - SilkCut Oasis Shear Collection - Limited Offer!**

Powerful razor-sharp convex blade, comfort offset handle with finger-rest, adjustable tension knob.

Case includes:

- 5.0 inch Scissor
  - 6.0 inch 35 teeth thinner
  - Deluxe case
- 15059**



- 5.75 inch Scissor
  - 6.0 inch 35 teeth thinner
  - Deluxe case
- 15060**



  
Olivia Garden®

SilkCut PRO  
Great for all stylists  
with pouch

5.0 inch **13803**

5.75 inch **13804**

6.5 inch **13805**



  
Olivia Garden®

5 inch shear & 6 inch thinner, with case  
**13806**  
5.75 inch shear & 6 inch thinner, with case  
**13807**  
6.5 inch shear & 6 inch thinner, with case  
**13808**

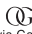
**LEFT**  
5 inch shear & 6 inch thinner, with case  
**13932**  
**LEFT**  
5.75 inch shear & 6 inch thinner, with case  
**13933**  
**LEFT**  
6.5 inch shear & 6 inch thinner, with case  
**13934**



  
Olivia Garden®

Well priced, well made & highly-affordable - by Olivia Garden


  
Olivia Garden®

  
Olivia Garden®  
SilkCut Kit, includes:  
1 x 5.75 inch scissor  
1 x 6 inch thinner  
plus case  
**11448**  
or  
1 x 5.0 inch scissor  
1 x 6.0 inch thinner  
plus case  
**11447**




Scissor only  
5.0 inch  
**11445**  
5.75 inch  
**11444**  
Thinner only  
6.0 inch  
**11446**




  
Olivia Garden®  
SilkCut  
Shear offset collection deal  
5.75 inch & 6.0 inch thinner  
plus case  
**4530**



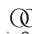
LEFT

  
Olivia Garden®  
SilkCut  
Left 5.0 inch & 5.0 inch thinner plus case  
**4528**



  
Olivia Garden®  
StraightCut shear collection deal  
5.0 inch & 6.0 inch double thinner plus case  
**4900**  
5.75 inch & 6.0 inch double thinner plus case  
**4901**



  
Olivia Garden®  
Xtreme shear collection deal  
5.0 inch & 6.0 inch thinner plus case  
**5262**  
5.75 inch & 6.0 inch thinner plus case  
**5263**

NEW! SilkCut® BCA Special Edition

- Handmade, powerful, razor-sharp convex blade
- Ultra-sharp blade edge with reinforced alloy steel
- Ergonomic handle with finger-rest
- Special thumb curvature to eliminate fatigue
- Adjustable tension knob & comfort silencer



  
Olivia Garden®



5.0 inch shear & 6.0 inch thinner, 35 teeth  
- Beautiful & unique deluxe case  
- Holds 2 shears  
**15636**

5.75 inch shear & 6.0 inch thinner, 35 teeth  
- Beautiful & unique deluxe case  
- Holds 2 shears  
**15637**

**CARA - VG-10 Shear Collection**

- Japanese** VG-10 stainless steel with high levels of Cobalt & Carbon
- Powerful** convex blades for a smooth, easy cut of all hair textures
- Ultra-sharp** & extremely long-lasting edge
- Hand-honed** with masterful craftsmanship
- Rockwell** hardness of 62
- Unique** lightweight blade design
- Easy** to adjust thin tension dial

- 5.5 inch shear
  - Oil brush
  - Finger Rings
  - Cleaning Cloth
  - Designer Case
- 11758**

- 6.0 inch shear
  - Oil brush
  - Finger Rings
  - Cleaning Cloth
  - Designer Case
- 11759**

- 6.5 inch shear
  - Oil brush
  - Finger Rings
  - Cleaning Cloth
  - Designer Case
- 11760**



- Perfectly** smooth ball-bearing pivot mechanism
- Offset** comfortable handle with special thumb curvature keeps hand relaxed in natural position
- Ergonomic** handle design with optimal finger-rest positions for effortless cuts with all fingers
- Removable** finger-rest
- Silicone** silencer

**Olivia Garden®**



**OLIVIA GARDEN TEXTURECUT - Ideal for creating soft layers & natural, blended styles**

**Olivia Garden®**



9 Teeth Chunking Shear  
**10601**



15 Teeth Texturing Shear  
**10602**



21 Teeth Blending Shear  
**10603**



**SilkCut from Olivia Garden**  
Gold Set  
5.0 inch shear & 6.0 inch thinner with case **14599**  
5.75 inch shear & 6.0 inch thinner with case **14600**



**Olivia Garden®**

**PRECISIONCUT - Long, thin, hand-honed, razor-sharp convex blades, lightweight, ergonomic handle, for the most precise styles**



Olivia Garden  
5.0 inch  
**6432**




Olivia Garden  
Deal: 1 x 5.0 inch scissor,  
1 razor & 1 zipper case  
**6434**

---



Olivia Garden  
Deal: 1 x 5.75 inch scissor,  
1 razor & 1 zipper case  
**6435**

**SILK CUT SHEAR - Special Edition. Convex Blades, offset handle with finger-rest, micro-adjustable tension knob, comfort silencer**



Olivia Garden  
5.0 inch **6413**  
5.75 inch **6414**  
6.0 inch thinner **6415**


Breast Cancer Awareness Special Edition.  
SilkCut - Champagne Gold Shear Collection.  
Convex blades, offset handle, adjustable tension knob

- 5.0 inch scissor, non-serrated
- 6.0 inch thinner
- Designer holster

**10544**

- 5.75 inch scissor, non-serrated
- 6.0 inch thinner
- Designer holster

**10545**



Olivia Garden

**SWIVELCUT - Double-pivot ergonomic handle, both pivots swivel & rotate 360°, allows wrist, handle & fingers to work in most comfortable position. Prevents wrist stress such as Carpal Tunnel Syndrome**



Olivia Garden  
5.0 inch **6441**  
5.75 inch **6442**

Olivia Garden  
Deal: 1 x 5.0 inch scissor,  
1 x razor & 1 zipper case  
**6443**



Olivia Garden  
Deal: 1 x 5.75 inch scissor,  
1 x razor & 1 zipper case  
**6444**

Olivia Garden  
SilkCut Breast Cancer Awareness Deal - Both with pouch

1 x 5.0 inch scissor  
1 x 6.0 inch thinner  
**8541**

1 x 5.75 inch scissor  
1 x 6.0 inch thinner  
**8542**





Olivia Garden DRAGON shear collection in zipper case

The ultimate Professional Shear with striking elegance. Finger-rest, arc-shape relieves elbow strain, hand-crafted with finest Japanese steel, titanium coating & powerful convex blades

6.25 inch scissor & 6.0 inch thinner  
5751



Olivia Garden

Olivia Garden  
6.0 inch 7857



Olivia Garden SilkCut XL Barber Shear with larger thumb hole

Olivia Garden  
7.0 inch 7858



**OLIVIA GARDEN - SILK CUT®  
Rose Gold Shear Collection**

Olivia Garden  
SilkCut Rose Gold  
5.0 inch scissor 12188



Powerful, razor-sharp convex blade. Ergonomic handle design. Special thumb curvature keeps hand relaxed to eliminate fatigue.

Olivia Garden  
6.0 inch thinner 12192



Olivia Garden  
Beautiful & unique deluxe case holds up to 2 shears & 1 other item

Rose Gold set with case  
5.0 inch shear & 6.0 inch thinner  
12190  
5.75 inch & 6.0 inch thinner  
12191



Olivia Garden  
POWERCUT KIT  
Deal: 1 x 5.5 inch shear,  
1 razor & 1 zipper case  
6439



Olivia Garden  
POWERCUT KIT  
Deal: 1 x 6.25 inch shear,  
1 razor & 1 zipper case  
6440



Olivia Garden  
POWERCUT - Reinforced Convex Blades, Arc-shape to relieve elbow strain, ergonomic handle & finger-rest, featherlight, perfectly balanced.

5.5 inch 6437  
6.25 inch 6438





An affordable range of shears, made in Europe

School Relax scissor with black nylon handles  
5.5 inch  
6.0 inch

3065  
3066



Kit  
Consists of:  
6.0 inch scissor, 6.0 inch thinner & razor  
3068

Scissor Stand  
A resting place for your scissors - to keep them safe (tools not included)  
15615



ICE-BLADE, affordable range, great performance, non-serrated

ICE-BLADE

5.0 inch scissor  
5.5 inch scissor

10112  
10114



5.5 inch thinner 10115

ICE-BLADE, non-serrated, crystal rose screw

ICE-BLADE

5.5 inch scissor

7041



ICE-BLADE

ICE-BLADE sword blade, blue screw hand-honed  
5.5 inch

3985



ICE-BLADE Offset  
5.5 inch

3965



ICE-BLADE

diane  
FROMM

DIANE Rose, non-serrated

5.0 inch scissor  
5.5 inch scissor  
6.25 inch scissor

12133  
10411  
10412



6.0 inch thinner  
28 teeth

10414

POP SHEARS - Narrow blade, lightweight, offset grip, removable finger-rest

SKULL, offset  
5.5 inch

6953



SKULL THINNER  
5.5 inch  
28 teeth

6954



**POP SHEARS - Narrow blade, lightweight, offset grip, removable finger-rest**

Handy shear  
organiser  
(tools not included)  
**4899**



5.0 inch **6306**  
5.5 inch **6307**



  
**Olivia Garden®**



**PINK ROSE**  
5.0 inch **6957**  
5.5 inch **6958**



**BLUE ROSE**  
5.0 inch **6955**  
5.5 inch **6956**



**PURPLE ROSE THINNER**  
5.5 inch **7373**



**CAMO**  
Offset grip, removable finger-rest  
5.0 inch **6304**  
5.5 inch **6305**

**EXCELIA by KAI**

The ergonomically-designed Excelia scissors meets any requirements of hair stylists who need the right tools for comfortable & creative work  
Made of high carbon Stainless Steel, ergonomically offset design, semi-convex blades with hollow ground blades, detachable finger-rests & rings

5.5 inch Offset  
**10696**  
6.0 inch Offset  
**10697**



5.5 inch Super offset  
**10694**



Texturizer, 38 teeth  
6.0 inch offset  
**10698**



**Scissor stand, ideal for tools**

White  
**13982**  
Tools not included



Black  
**13983**  
Tools not included



**ICE-BLADE**



Convex, Diamante  
 5.0 inch 6445  
 5.5 inch 6446

Magnet fits snugly onto scissor handle  
 Koala Magnet 6458  
 Dolphin Magnet 6457



**ICE-BLADE**



Purple/Silver Snake  
 5.0 inch 6452  
 5.5 inch 6453

**ICE-BLADE**



Purple/Gold  
 5.0 inch 6447  
 5.5 inch 6448  
 6.0 inch 6449

**ICE-BLADE**



Silver/Black  
 5.0 inch 6450  
 5.5 inch 6451

ICE-BLADE coloured scissor - non-serrated

5.5 inch pink  
**8883**  
 5.5 inch blue  
**8884**  
 5.5 inch red  
**8885**



**ICE-BLADE**

ICE-BLADE coloured thinner

5.5 inch pink thinner  
**8886**  
 5.5 inch blue thinner  
**8887**  
 5.5 inch red thinner  
**8888**



**ICE-BLADE**

**ICE-BLADE**



ICE-BLADE alloy, Passion Flower  
 5.5 inch scissor 14635



5.5 inch thinner 14639

**ICE-BLADE**



Rose Gold, aluminium, well-priced  
 5.0 inch scissor 12261  
 5.5 inch scissor 12265  
 6.0 inch scissor 12283



5.5 inch thinner 12284

A range of shears made from Japanese steel, precision cutting ability, hand made in Korea - for professionals only

Great, affordable range, ideal for apprentices & professionals

CLASSIC  
with adjustable screw  
5.0 inch

3963



**ICE-BLADE**

BARBER-CUT  
5.5 inch  
6.5 inch  
7.5 inch

12135  
14299  
5637



**diane**  
\*FROMM

**ICE-BLADE**

Scissor, matt pink,  
economy 5.0 inch

3681



Scissor thinner, matt pink,  
economy 5.5 inch

3682



Scissor kit, matt blue  
Consists of:  
- 5.5 inch scissor  
- 5.75 inch thinner  
- razor with attached blade  
4952



**ICE-BLADE**

Scissor, black plastic handles, economy  
5.0 inch  
3613



Scissor thinner  
black plastic handle  
6.0 inch  
3614



**ICE-BLADE**

JAY2 Scissor Set - great quality,  
great price  
5.5 inch scissor  
6.0 inch thinner  
P696



6.0 inch scissor  
6.0 inch thinner  
P695

**JAGUAR**



Scissor kit, matt pink  
Consists of:  
- 5.5 inch scissor  
- 5.75 inch thinner  
- razor with attached blade  
4566

**ICE-BLADE**

Great, affordable range, ideal for apprentices & professionals

Black Spider  
5.5 inch 6128



Black Spider Thinner  
5.5 inch 6127



Black  
5.5 inch 6146



Black Thinner  
5.5 inch 6147



Cream with flowers  
5.5 inch 5574



Cream with flowers Thinner  
5.5 inch 5575



Gun-metal grey  
5.5 inch 5572



Gun-metal grey Thinner  
5.5 inch 5573



Red, rubberized handle scissor  
5.5 inch 6217



Red, rubberized handle thinner, 28 teeth  
5.5 inch 6219



DIANE, Daisy, economy, serrated  
5.0 inch 14506



DIANE, Daisy, economy, serrated  
6.0 inch 14507



DIANE, Daisy, economy, serrated  
7.0 inch 14508



diane  
FROMM

DIANE, Daffodil, serrated  
5.0 inch 14509



diane  
FROMM



JOEWELL  
LX  
5.5 inch

3444



JOEWELL  
FX Series  
5.0 inch  
5.5 inch

3453  
3454



JOEWELL  
FX Series Left Hand  
5.0 inch  
5.5 inch

4842  
4843

LEFT



JOEWELL  
C One  
5.0 inch

3463

From Joewell - hand-made Japanese scissor, with colourful coating, will not peel

C-SERIES



BLUE  
5.25 inch 7919  
5.5 inch 7920  
6.0 inch 7921



PINK  
5.25 inch 7925  
5.5 inch 7926  
6.0 inch 7927



RED  
5.25 inch 7916  
5.5 inch 7917  
6.0 inch 7918




WHITE  
5.25 inch 7922  
5.5 inch 7923  
6.0 inch 7924

FX Pro from Joewell



PINK  
5.0 inch 9895  
6.0 inch 9897



JOEWELL  
Classic, pink gold  
4.5 inch

5490



JOEWELL  
CONCAVE COBALT  
5.25 inch  
5.75 inch

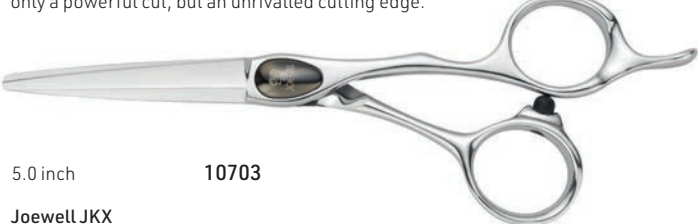
6123  
6124



JOEWELL  
FX-PRO, stainless alloy,  
nickel-less  
5.0 inch


3897

**ZN500**  
Ergonomic, offset handle with finger-rest, sword blade & convex shape blade; supreme stainless alloy. This combination of a sword & convex blade delivers not only a powerful cut, but an unrivalled cutting edge.



5.0 inch 10703

Joewell JKX  
Lighter & narrower designed long scissors with a powerful sword blade for sharp cutting quality & durability.



6.5 inch 10706

JOEWELL

**Jaguar Pre Style Ergo School Set**

Consists of:

- 1 x serrated scissor (5.0 or 5.5 inch)
- 1 thinner (5.5 inch)
- 1 razor, blades & a small tool pouch
- 5.0 inch P125
- 5.5 inch P126



**Affordable SCHOOL set**

- 5.5 inch scissor
- 5.5 inch thinner
- Razor & blades plus pouch
- 12490



**ALUMINIUM KIT**

- 5.5 inch scissor
- 5.5 inch thinner
- + box
- 3063

**Jaguar JP Advance kit**

Consists of:

- 1 JP10 scissor (5.25 or 5.75 inch)
- 1 JP38 thinner (5.25 inch) & a Scissor pouch
- 5.25 inch P140
- 5.75 inch P141



**Jaguar Prestyle Ergo School Set - LEFT**

Consists of:

- 1 serrated left hand scissor (5.25 or 5.75)
- 1 thinner LEFT (5.25 inch)
- 1 razor, blades & a small pouch



**ICE-BLADE**

**Rose Gold Economy Set**

Consists of:

- 5.5 inch scissor
- 5.5 inch thinner
- Razor
- Blades
- Pouch
- P0016



- 5.0 inch scissor
- 5.5 inch thinner
- Razor
- Blades
- Pouch
- P0017

- 6.0 inch scissor
- 5.5 inch thinner
- Razor
- Blades
- Pouch
- P0018

Matsuka Scissors: Japanese steel, affordable solution

**MBL50**  
 MBL50 Lefty Offset  
 5.75 inch **1288**

**LEFT**



**MESDA**  
 Cobalt  
 5.0 inch **1283**  
 5.5 inch **1284**



**MESDA**  
 MB30 Thinner  
 5.5 inch  
 30 teeth **1282**



**MESDA**  
 Ergo Offset Thinner  
 5.5 inch  
 30 teeth **1289**



**MESDA**  
 Ergo Offset:  
 5.0 inch **1285**  
 6.0 inch **1287**



Set, 1 of each, Pastell Plus  
 Scissor 5.5 inch, thinner 5.0 inch & pouch  
**CANDY P738**  
**VIOLA P739**  
**LAVA P740**



**JAGUAR**

**PASTELL PLUS**

**JAGUAR**

**PASTELL PLUS ES-30**

**JAGUAR**



Other Sets

**P179**  
 Black Spider Scissor set  
 5.5 inch scissor  
 5.5 inch thinner  
 Pouch



**ICE-BLADE**

**P181**  
 Floral Scissor set  
 5.5 inch scissor  
 5.5 inch thinner  
 Pouch



**ICE-BLADE**



**STYLE SENSATION SETS:**

Change the holster according to your mood

**JP10/38**

Scissor/thinner combination  
5.75 inch scissor  
5.25 inch thinner  
38 teeth  
7911



**Prestyle Ergo, Polished**

5.0 inch scissor  
5.5 inch thinner,  
28 teeth  
**7902**  
5.5 inch scissor  
5.5 inch thinner,  
28 teeth  
**7903**



**Prestyle Ergo, Satin**

5.0 inch scissor  
5.5 inch thinner,  
28 teeth  
**7900**



**Prestyle Relax, Polished**

5.5 inch scissor  
5.5 inch thinner,  
28 teeth  
**7907**



**Prestyle Relax, Satin**

5.5 inch scissor  
5.5 inch thinner,  
28 teeth  
**7905**



**JAGUAR SUMMER SET**

- Scissor 5.0 inch
- R1M Razor
- Holster
- P0021**

- Scissor 5.5 inch
- R1M Razor
- Holster
- P0022**





**FROMM Shear Artistry**

Introducing the best-in-class tools to express stylists' artistry at an affordable price.

Premium design & engineering, accessible to all stylists, high quality Japanese steel, modern & attractive finishes, full range of different types of scissors, a trustworthy brand.

**EXPLORE**

Beveled blade with smooth edge. Durable Japanese steel. Comfortable, semi-offset handle. Polished silver finish.



5.75 inch  
**14942**



Thinner 5.75 inch, 28 teeth  
**14943**

**TRANSFORM**

Beveled, semi-convex blade with smooth edge. Durable Japanese steel. Comfortable semi-offset handle. Matte silver finish.



5.25 inch  
**14944**



Thinner 5.75 inch 28 teeth  
**14948**



5.75 inch  
**14945**



5.75 inch LEFT  
**14947**

**INVENT**

Convex blade with semi-convex edge. High quality Japanese steel. Ergonomic offset handle. Gunmetal finish.



5.75 inch  
**14951**



6.25 inch  
**14952**



Barber 7.25 inch  
**14949**



Thinner 5.75 inch, 28 teeth  
**14953**

**Student Shears**

Snapdragon - Japanese steel, semi-convex edge, blue finger-rings



5.25 inch  
**14893**



5.75 inch  
**14894**



5.75 inch LEFT  
**14896**



6.25 inch  
**14895**



Thinner 5.75 inch, 28 teeth  
**14897**