

ghd



ghd platinum



ghd

ghd brushes

ghd ceramic vented radial brushes

Size 1 (25mm): **8694**
 Size 2 (35mm): **8695**
 Size 3 (45mm): **8696**
 Size 4 (55mm): **8697**



ghd natural bristle radial brushes

Size 1 (28mm): **8698**
 Size 2 (35mm): **8699**
 Size 3 (44mm): **8700**
 Size 4 (55mm): **8701**



ghd oval dressing brush
8703



ghd paddle brush
8702



ghd style tools

ghd V gold max styler, 185°C

Make easier work of straightening thick or very curly hair with large plates
8679



ghd V gold mini styler, 185°C
 Narrow plates allow for precision styling, such as smoothing out cowlicks, kinks & fringes & for straightening right from the root
8680

ghd IV styler, 185°C

The original styler for everyday styling.
 A brilliant all-rounder
8677



ghd Gold Professional Styler

- New technology, modernised design & excellent performance for sleeker, smoother, healthier hair
 - Versatile, quick, easy, snag-free styling with 25 second heat-up time on its round barrel
 - Dual-zone technology - 2 heat sensors instead of 1 for maximum & optimum heat control from root to tip.
 - Temperature monitored & controlled across each full plate for independent power control to each plate
 - Optimum styling temperature at 185°C
 - Enhanced design & swivel cord - improved ergonomics, usability & speed with 2.7m cable
 - Universal voltage for good hair days around the world
 - Protective, scratch-resistant, soft touch plate guard for safe storage on the move
 - Sleep Mode switches iron off after 30 minutes without use
 - 185°C
- 14501**



ghd Platinum+ Styler Black

- Get ultimate results without compromising the health of your clients' hair. Tri-Zone™ technology maintains an optimum, consistent, safer-for-hair heat from root to tip for stylish & healthy hair in one stroke
 - 3 sensors & 3 heaters per plate for independent power control to each plate & section
 - Over 50% less breakage, 20% increase in shine, faster styling & 2x more colour integrity
 - Improved design, ergonomics & handling with 2.7m cable & enhanced swivel cord
 - Unique wishbone hinge keeps plates in perfect alignment to prevent hair slippage & snagging for better styling control
 - Top quality materials for premium feel with aerogel insulation
 - New on/off switch to prevent accidental activation with sleep mode if not used for 30 minutes
 - Scratch-resistant soft touch plate guard for storage & travel
 - Universal voltage for use around the world
 - 185°C
- 14105**



ghd CURVE

23-28MM Creative Curl Wand Set, 185°C

The tapered barrel creates natural-looking curls & deep waves, for a beautiful, beachy effect & glamorous, bouncy, big hair.

11105



ghd style products

NEW! ghd Curve Soft Curl Tong

This tong has a large 32mm barrel with spring-activated, ergonomic lever to give volume at the roots & tumbling, soft waves on longer hair.

- 32mm barrel designed to create big, soft waves
- Spring-activated lever for securing hair tips
- Cool tip designed for more comfortable curling
- Safety stand for when tong is not in use
- Advanced ceramic coating for smoother curling
- Sleep mode turns tong off after 30 minutes
- 2 year guarantee
- 185°C
- Universal voltage

15956



ghd
good hair day every day

ghd Air™ Hairdryer 2100W 8682



Diffuser
9923

ghd
good hair day every day

ghd style products



Heat Protect Spray
120ml
8683



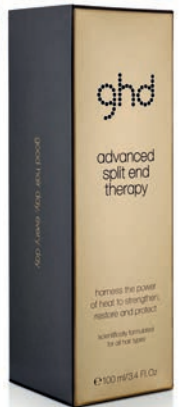
Straight & Smooth Spray
120ml
Normal/Fine
8684



Straight & Tame
Cream
120ml
8691



Curl Hold Spray
120ml
8686



Advanced Split End Therapy
100ml
12566



Smooth & Finish Serum
30ml
8693



Final Shine Spray
100ml
8688



Root Lift Spray
100ml
8687



Final Fix Hairspray
75ml
8690



8689



Total Volume Foam
200ml
8692