



osmoikon[®]
PERMANENT HAIR COLOUR

TECHNICAL
MANUAL

BE A COLOUR IKON

Experience the latest innovation in permanent hair colour with OSMO IKON® permanent colour formulated with Micro-Connective Technology (MCT)

Micro-Connective Technology is composed of special, micro-sized colour molecules which link together within the hair shaft. These molecules do not require the extreme opening of the hair cuticle, therefore offer less opportunity for the colour molecules to escape from the hair following each colour service.

The OSMO IKON® range comprises **84 shades across 17 tonal families**, from dark chocolates and vibrant coppers to super blondes with soft pastel hues offering the unique benefits found only in a Hybrid or Dual Colour System, resulting in endless colour results.

With extensive colouring options and true colour results, teamed with easy mixing and incredibly smooth application, serious colourists experience the total freedom to express their creativity and versatility with greater confidence.



CONTENTS

	PAGE
THE TECHNOLOGY	4
PREPARATION	5
MANUFACTURER'S INSTRUCTIONS	5
5 BASIC RULES OF COLOUR	6
THE COLOUR WHEEL	7
THE COLOUR SYSTEM	10
POWER LIFT BLEACH	14
PEROXIDE/CREAM DEVELOPERS	15
BLONDE ELEVATION	16
THE MIXING TABLE	18
THE DEVELOPMENT PROCESS	19
APPLICATION	20
COLOUR BALANCING/ MATCHING SERVICE	21
WHITE HAIR COVERAGE	22
COLOUR CORRECTION METHODS	24
COLOUR LAYERING	25
COLOUR BACK TECHNIQUES	26



THE TECHNOLOGY

MICRO CONNECTIVE TECHNOLOGY (MCT)

The micro-sized colour molecules within the OSMO IKON® formulas are easily absorbed into the hair cuticle allowing for much lower ammonia content and significantly improved hair condition. MCT molecules are locked into the cortex, providing longer lasting colour clarity, complete white hair coverage and multi-dimensional shine.

Formulated with Chia Oil & Tamanu Seed Extract and with a light fruit fragrance, OSMO IKON® colour provides active conditioning to produce supple and sleek hair that looks healthy and natural. Its special cream-gel formula not only renders application easier, but allows better hold and a quicker migration of the colour into the hair.

Its components derived from Vitamin E compounds allow better permanence in time. Lab tests have proven a 38% increase of colour permanence compared to the same formula without multi-vitamins. The same protective substances guarantee a 10% increased hair mechanical resistance and effective protection during exposure to UV rays.

The anti-oxidising agents contained in this formula maintain stability for over 3 years, even after the tube has been opened. More intense colours and perfect permanence in time.

HYBRID/DUAL COLOUR SYSTEM

OSMO IKON® offers the unique ability to be a Hybrid/ Dual colouring system. This means that each tube of colour in the 1-10 series has the ability to give either a Permanent or Semi-Permanent colour result.

This is determined by the use of 10Vol, 20Vol, 30Vol & 40Vol Developer for a permanent result or Cream Developer 5Vol for a long lasting semi-permanent result. This offers the exclusive opportunity to colour balance or match mid lengths and ends with exactly the same colour as that which is used for the root area, resulting in seamless colour results with maximum condition and shine leading to even longer lasting colour.



PREPARATION

SKIN TEST APPLICATION

A skin patch test must be performed 48 hours prior to each colour service to ensure your client does not have an allergic reaction.

1. 1 part of the chosen shade to be used.
2. Apply a small amount of tint behind each ear with a cotton bud.
3. Leave on for 48 hours, if no reaction has occurred, you are ready to colour.
4. If your client has a tattoo the risk of allergic reaction may be increased.

Do not use hair colour if any of these danger signs appear:

Burning, itching, swelling, eruption or irritation - if any of these signs appear in or around the test area, rinse immediately with lukewarm water.

Before colouring the hair again, recommend that your client consult a doctor.



MANUFACTURER'S INSTRUCTIONS

Manufacturer's instructions must be followed at all times. These can be found inside each OSMO IKON® colour carton.

OSMO IKON® can only guarantee results when OSMO IKON® products are used together correctly.

5 BASIC RULES OF COLOUR

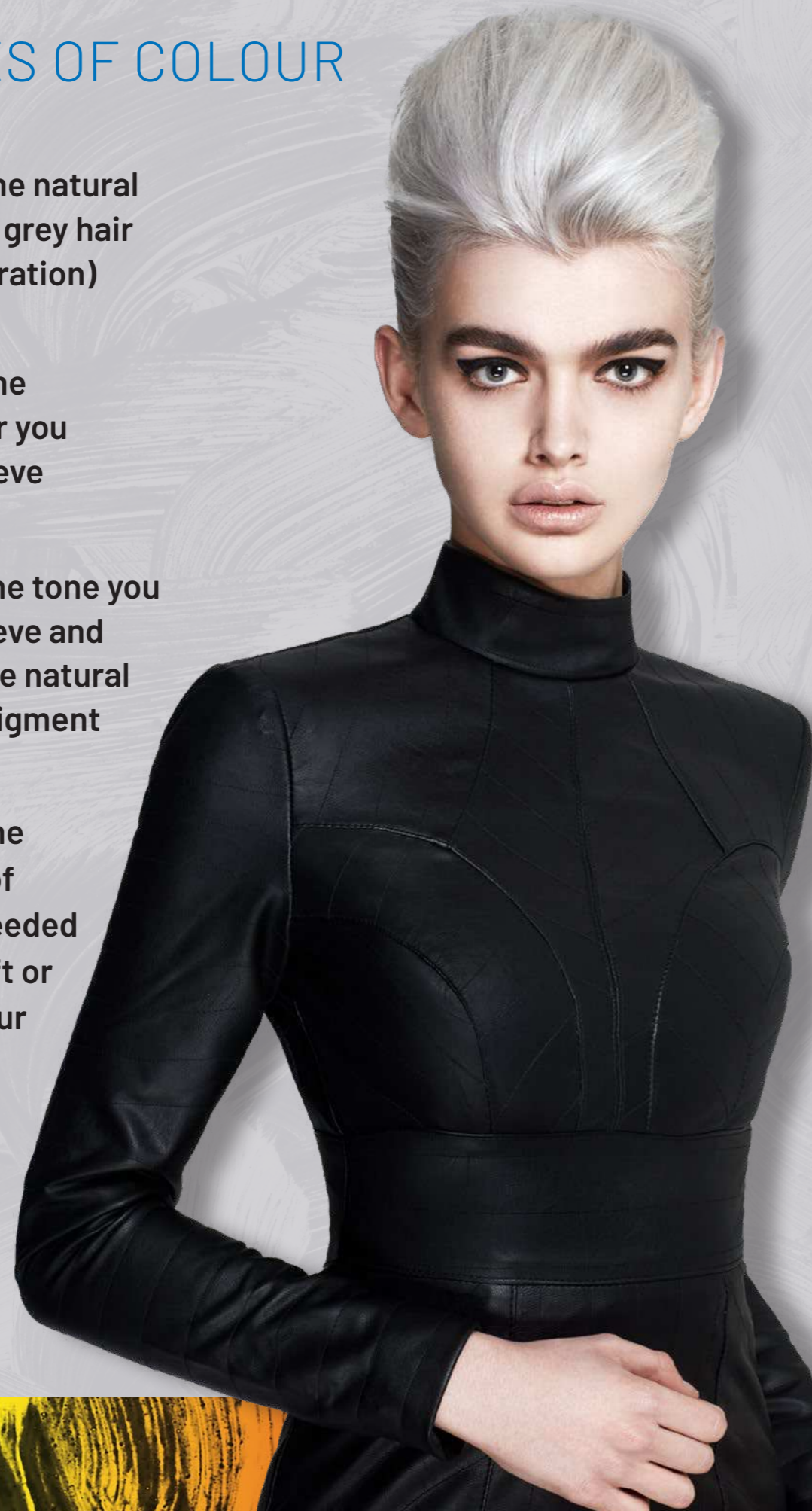
1 Determine the natural base (taking grey hair into consideration)

2 Determine the target colour you wish to achieve

3 Determine the tone you wish to achieve and recognise the natural underlying pigment

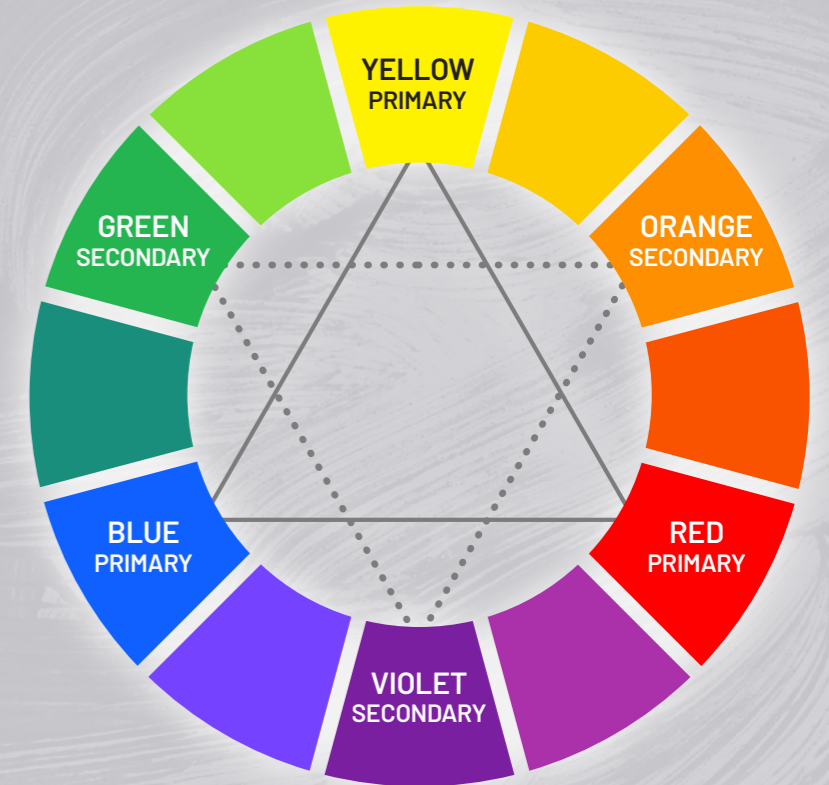
4 Determine the volume (%) of developer needed to achieve lift or deposit colour

5 MEASURE, MEASURE, MEASURE!

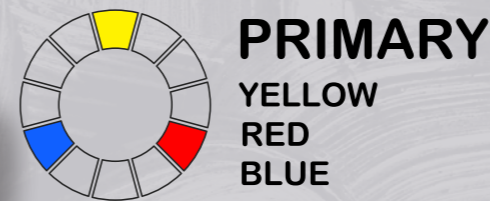


THE COLOUR WHEEL

The use of the universal colour wheel is crucial to any colour service, it should always be used as a tool to ensure colour formulations are correct for the desired outcome, when either lightening the hair or adding colour back into the hair.



The colour wheel is made up of primary colours:



When two of these primary colours are mixed together we create what is known as secondary colours.



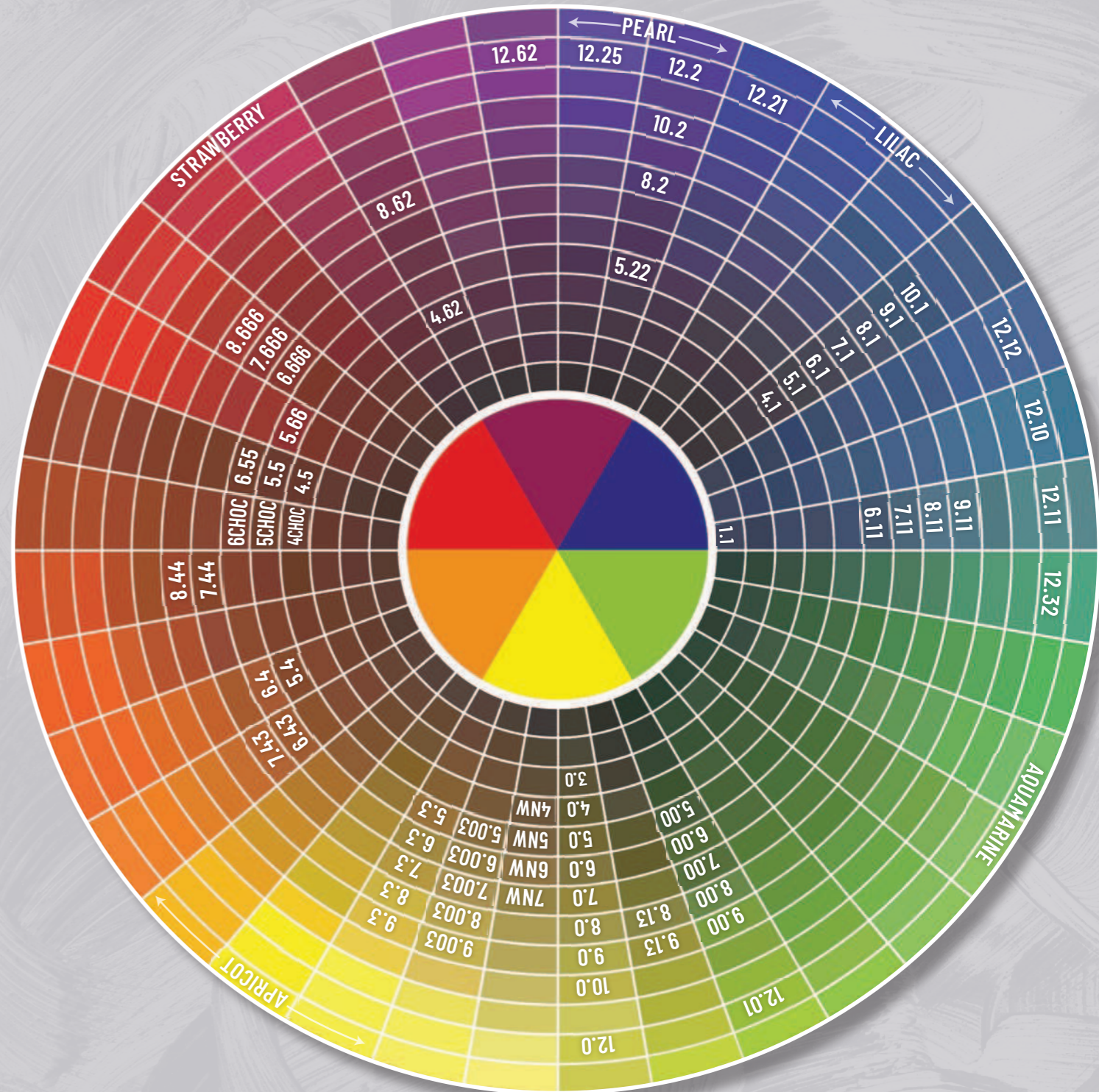
Looking at the colour wheel we see that a primary colour sits opposite a secondary colour, traditionally we know these opposing colours are used to counteract each other to create neutral results.



THE COLOUR WHEEL

The reason for this is that when the 3 primary colours are mixed together we create brown, so therefore if we have unwanted yellow in tones in the hair we need to add the two remaining primary colours which are Red + Blue (= Violet) to complete the tertiary colour known as Brown/Neutral.

THE COLOUR WHEEL



EXAMPLE 1:

PROBLEM: Unwanted Green tones (Yellow + Blue present).

SOLUTION: To counteract this, Red is required (remaining Primary)

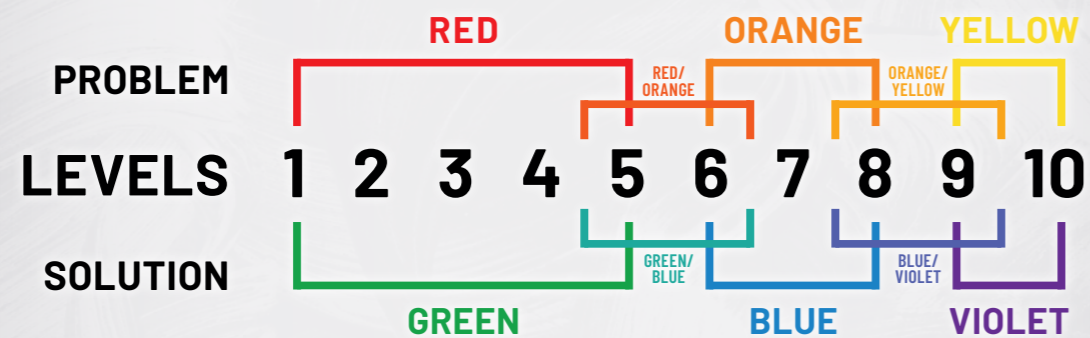
RESULT: All three Primary colours are present resulting in Neutral

EXAMPLE 2:

PROBLEM: Unwanted Orange tones (Yellow + Red present)

SOLUTION: To counteract this Blue is required (remaining Primary)

RESULT: All three Primary colours are present resulting in Neutral





THE COLOUR SYSTEM

NUMBERING SYSTEM

OSMO IKON® is represented by the International Numbering System using numbers to describe each tone or reflect.

EXAMPLE: 6.4 = Dark Copper Blonde

The number appearing before the decimal point always represents the level of depth of each shade.

The darkest being Black – represented as 1.0, up to Lightest Blonde – being represented as 10.0

LEVEL OF DEPTH

- LEVEL 1 Black
- LEVEL 3 Dark Brown
- LEVEL 4 Medium Brown
- LEVEL 5 Light Brown
- LEVEL 6 Dark Blonde
- LEVEL 7 Medium Blonde
- LEVEL 8 Light Blonde
- LEVEL 9 Very Light Blonde
- LEVEL 10 Lightest Blonde

REFLECT/TONE

Numbers appearing after the decimal point always represent the reflect or tone of each shade.

- .0 Natural Used for white hair coverage
- .1 Ash Used for counteracting orange
- .2 Violet Used for fashion results and counteracting yellow
- .3 Gold Used for soft warm results
- .4 Copper Used for rich warm fashion results
- .5 Mahogany Used for fashion results combining brown, orange & red
- .6 Red Used for high fashion results

When more than one number appears after the decimal point (representing reflect/tone) the first number will always be dominating of the two reflect/tones, also known as the primary and secondary reflect/tones.

EXAMPLE: 6.43

- 6. Level of Depth (Dark Blonde)
- .4 Primary or dominant reflect/tone (Copper)
- .43 Secondary reflect/tone (Gold)
- 6.43 Dark Copper Golden Blonde

If the two or more numbers following the decimal point are the same reflect/tone, this is described as Intense.

Example: 7.44

- 7. Medium Blonde
- .44 Intense Copper
- 7.44 Medium Intense Copper Blonde

The only exceptions to the International Numbering System are the following OSMO IKON® colour families:

- **NW Natural Warm** - used in combination with Naturals for superb results on white hair
- **.003 Bahia** - used in combination with Naturals for superb results on white hair
- **4, 5 & 6 Chocolate** - reflect/tones

1-10 SERIES

Consisting 17 tonal families the 1-10 series is your classic colouring system with the added value of being a Hybrid/Dual colour system combining permanent and semi-permanent in the same tube.

- **Naturals**
- **Natural Warm**
- **Intense Ash**
- **Ash**
- **Golden**
- **Copper Intense**
- **Violet**
- **Absolute Red**
- **Cool Naturals**
- **Bahia**
- **Special Black**
- **Natural Ash Golden**
- **Copper**
- **Copper Golden**
- **Mahogany**
- **Chocolate**

All with the ability to lighten up to 3 levels combined with the appropriate developer, however, always remember the universal colour law: **Tint does not lighten tint (artificial colour).**

When the need for lightening existing artificial colour arises, always use corrective measures and suitable lighteners for both the required amount of colour removal and consideration for the condition of the hair.

HI-LIFT REDS

Hi-Lift tint is designed to both lighten the hair and deposit colour all in one step delivering stunning results without the use of bleach. This gentler colouring method makes a popular option for many clients. **MIXING RATIO – 1 : 1.5**



THE COLOUR SYSTEM

SPECIAL LIGHTENERS

Traditionally 1-10 series permanent colours have maximum ability to lighten up to 3 levels on natural hair. As all clients have different hair types and desire varying colour results, the need for special lightening products to gain extra lift is sometimes necessary.

OSMO IKON® offer several options delivering outstanding colour results, determined by the needs of each individual whilst maintaining the best in condition and shine.

SUPER BLONDES

- Designed for lightening up to 5 levels
- Use on natural hair only
- Lighten and tones simultaneously
- 1 : 2 mixing ratio. 30ml Super Blonde shade + 60ml 40Vol Cream Developer (12%)
- 50 minute development time
- Not recommended for white hair coverage

- 12.0 Natural Scandinavian Blonde
- 12.01 Ice Ash Scandinavian Blonde
- 12.10 Intense Ash Scandinavian Blonde
- 12.11 Silver Scandinavian Blonde
- 12.12 Pearl Scandinavian Blonde
- 12.2 Violet Scandinavian Blonde
- 12.21 Iris Scandinavian Blonde
- 12.25 Violet Mahogany Scandinavian Blonde
- 12.32 Beige Scandinavian Blonde
- 12.62 Pink Scandinavian Blonde

BLONDE BOOST 0.00

- Contains no Reflect or Tonal value
- Special additive to 1-10 series shades for added lightness and brightness up to 1 level (20% of total colour amount)
- Can be added to Super Blondes for up to 1 level extra lift
- For Super Blondes add 50% Blonde Boost 0.00 to the mixture.

EXAMPLE 1: 40ml 7.4

+ 10ml 0.00 Blonde Boost
+ 75ml required OSMO IKON® Cream Developer
Resulting in a lighter, brighter Copper Blonde

EXAMPLE 2: 20ml 12.2

+ 20ml 0.00 Blonde Boost
+ 80ml required OSMO IKON® Cream Developer
Resulting in more lift, ideally used from Level 6/7 or lighter.

EXAMPLE 3: 20ml 0.00 Blonde Boost

- + 30ml Required Cream Developer
- Removing Colour Bands/Correcting Uneven Colour
- Soft Sun Kissed effect on Natural hair
- Up to 2 levels lightening on slightly coloured hair when using 30/40Vol Cream Developer
- Enhances natural or artificial Reflect/Tone
- Allows for underlying pigment to show through
- Colour Intensifiers can be added to enhance or reduce Reflect/Tone or underlying pigment

Blonde Boost can be utilised to balance clients with high White Hair percentage around front hairline by adding 0.00 Blonde Boost to a separate mixture for the area lacking white hair, resulting in an extra level of lift in that area, therefore balancing out the overall global result.

EXAMPLE:

A client with:

- 70% white hair around the front of the hairline
- 20% white hair through the remaining hair

If we were to apply 7.0 with 20Vol Cream Developer straight through the entire head it would result in a lighter colour through the front and a slightly deeper result through the remaining hair depending on the Natural Base.

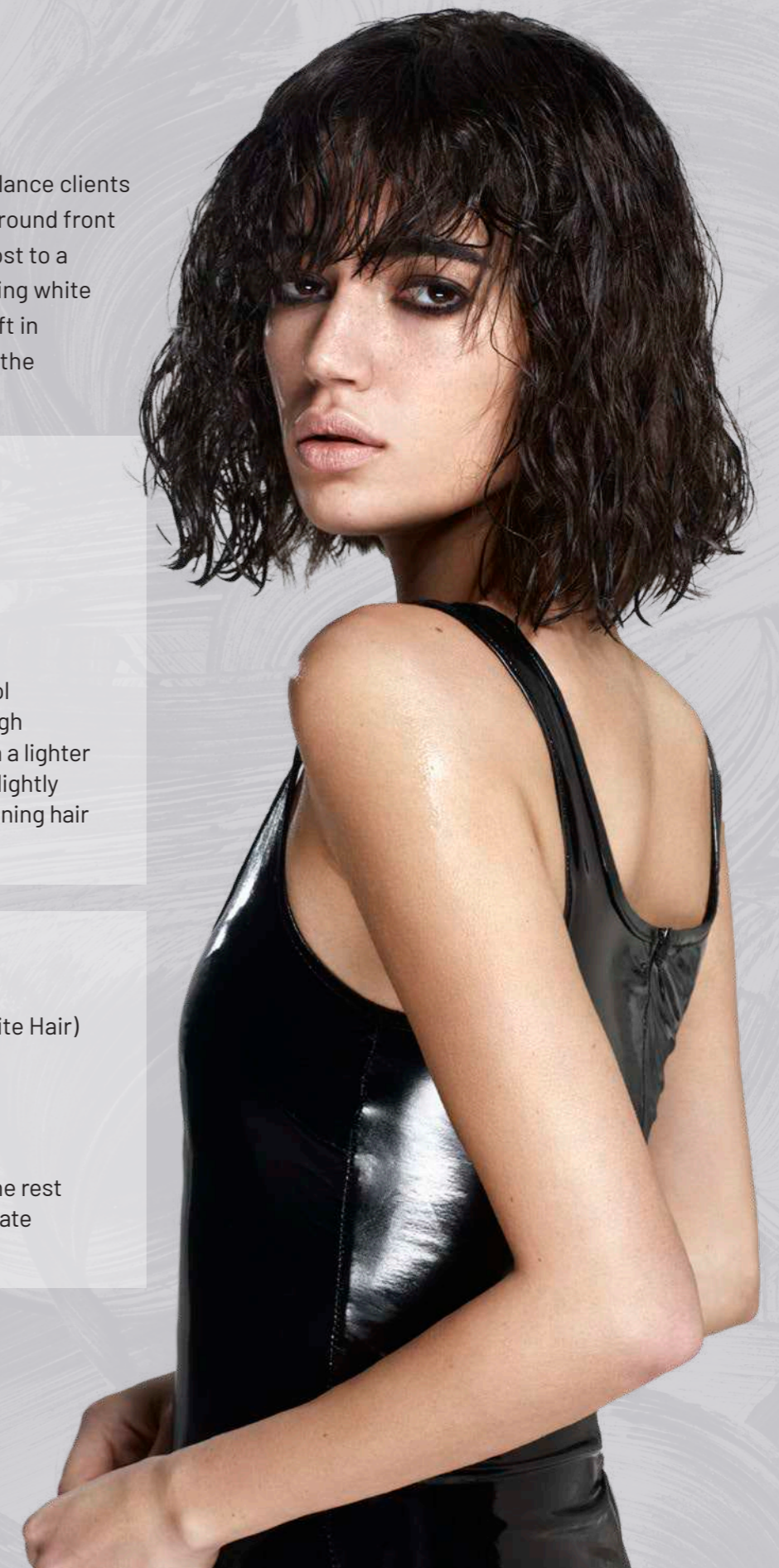
SOLUTION: 30ml 7.0

+ 45ml 20Vol Cream Developer
Apply to front hairline (70% White Hair)

Then add:

10ml 0.00 Blonde Boost
+ 15ml 20Vol Cream Developer

To remaining mix and apply to the rest of the hair and develop appropriate time for white hair coverage.



POWER LIFT BLEACH

OSMO IKON® advanced lifting formula combined with special conditioning elements deliver exceptional lightening results with up to 7 levels of lift.

Available in White and Blue Dust Free formulations, both ideal for on and off scalp application, whilst it's smooth consistency allows for easy mixing and simple fuss-free application.

- Quick lifting formulation
- Up to 7 levels of lift
- Dust free means safer mixing
- Conditioning elements leave the hair feeling soft and supple
- 1:2 mixing ratio
- 10, 20, 30 off scalp foil applications
- 40Vol free hand balayage techniques or off scalp applications (not foil)
- 20Vol only for on scalp applications



PEROXIDE

CREAM DEVELOPER

OSMO IKON® shine-boosting Cream Developers work in unison with OSMO IKON® hair colour to provide brilliant, multi-dimensional colour. When mixed with OSMO IKON® permanent hair colour, Micro-Connective Technology (MCT) molecules are absorbed deep onto the internal cortical hair fibers, ensuring that each hair strand is suffused with vibrant long-lasting colour. Aiding in the creamy, smooth consistency with the light fresh fruity fragrance OSMO IKON® is renowned.

- 10Vol - adding depth or reflect/tone only
- 20Vol - 2 levels of lift, staying on the same level, reflect/tone change, white hair coverage
- 30Vol - 3 levels of lift with 1-10 series
- 40Vol - 4 levels of lift with 1-10 series, up to 4 - 5 levels of lift with Super Blondes

CREAM DEVELOPER (5Vol / 1.5%)

OSMO IKON® Cream Developer 5Vol is designed to work in unison with OSMO IKON® professional hair colour, to revive and enhance colour from roots to ends. When accompanied with OSMO IKON® hair colour the Cream Developer 5Vol creates a secondary range of long lasting semi-permanent shades providing an ideal progression from 'tone on tone' effect to permanent with the same colour.

Also perfect for the returning client who requires only permanent re-touch on the root area, therefore you would use the desired OSMO IKON® shade with the appropriate OSMO IKON® Developer, whilst exactly the same colour pigment can be deposited through the mid-lengths and ends of the hair with the same tube of colour mixed with Cream Developer 5Vol to balance or match the same reflect/tone or intensity creating a more gentle colour application therefore resulting in longer lasting, shine enhanced colour results.



BLONDE ELEVATION

PREMIUM VIOLET LIGHTENING POWDER

A premium, high level, dust-free bleach delivering up to an incredible 9+ levels of lift. This violet infused formula helps banish unwanted yellow tones for the cleanest possible results, whilst maintaining the hair's best condition.

- Incredible lifting action
- Up to 9+ levels of lift
- Formulated with Bond Builder Technology
- 1 : 2 mixing ratio
- With special violet pigments to help neutralise unwanted yellow tones so often associated with the lightening process
- Delivers super clean results
- For use both on and off scalp

EXAMPLE:

1 x Scoop of Premium Violet Bleach to between 45ml / 75ml Cream Developer depending on the consistency required. Process for 20-60 minutes depending on the developer and the hair.



FREEHAND CLAY ADDITIVE

A Kaolin Clay based additive designed to thicken any OSMO IKON® bleach formula for a creamy 'stay in place' texture. The perfect solution for all open-air techniques, Freehand Clay Additive encapsulates the hair without compromising on the lightening power, allowing for more precise application with limited transfer.

- Formulated with the mineral Kaolin that helps form a barrier around the hair when wet to encapsulate the moisture throughout the lifting process
- Designed to thicken your lightening powder formulation for the perfect open-air techniques
- Prevents the bleach from swelling – no bleeding/seepage
- Product will not dry out or flake as a result
- No need for foils, meche or film
- Enables expert control
- The perfect lightener for all balayage enthusiasts

EXAMPLE:

10g Freehand Clay Additive + 30g Bleach Powder + 60ml Cream Developer – mix to a smooth paste. Process for 20-60 minutes depending on the developer and the hair.

COLOUR ADDITIVES

A range of bespoke multi-functional neutralising solutions designed to help cater for all client requirements when combined with any lightening formula. With no compromise on development time, these highly concentrated pigments help deliver the perfect super clean base for all your colouring requirements.

EXAMPLE 1:

5 x pumps of Violet Colour Additive added to the lightening formula helps neutralise any yellow tones allowing for a cleaner lift. Best used on Levels 6 and above.

EXAMPLE 2:

On levels 1-6, add Red Colour Additive to 10 Vol for beautiful Strawberry tones. On levels 7 and up, add it to 30-40Vol for stunning beige blonde results.

EXAMPLE 3:

Add 1-2 pumps of any colour additive to Wonder 10 as a bespoke 'take-home' colour top up treatment for your clients.



THE MIXING TABLE

Desired Result	Mixing Proportion	The Mix	Processing Time
Tone On Tone (semi-permanent)	1:2	40ml 1-10 Series + 80ml Cream Developer 5Vol (1.5%)	20 mins
Lightening 1 Level	1:1	40ml 1-10 Series + 40ml Cream Developer 10Vol (3%)	40 mins
Lightening 2 Levels	1:1	40ml 1-10 Series + 40ml Cream Developer 20Vol (6%)	40 mins
Lightening 3 Levels	1:1	40ml 1-10 Series + 40ml Cream Developer 30Vol (9%)	50 mins
Lightening 4 Levels	1:2	20ml 1-10 Series + 20ml Blonde Boost + 40ml Cream Developer 40Vol (12%)	50 mins
Super Blondes 4 Levels	1:2	40ml Super Blondes + 80ml Cream Developer 40Vol (12%)	50 mins
Metallics	1:1.5	40ml Metallic Shade + 60ml Cream Developer 10Vol (3%)	20 mins max at sight depending on desired results
Hi-Lift Reds	1:1.5	40ml Hi-Lift Red Shade + 60ml Cream Developer 10Vol/20Vol/30Vol	35-45 mins

THE DEVELOPMENT PROCESS

It is vitally important to adhere to the correct development time when using OSMO IKON® Permanent Hair Colour.

COMMON MIXING ERRORS

Higher Quantity of Cream Developer

EXAMPLE:

- A Less Coverage
- B Loss of Reflect/tone
- C Colour Fade
- D Loss of Depth

Lower Quantity of Cream Developer

EXAMPLE:

- A Unnatural colour result
- B Lack of intensity & brightness
- C Opaque tone
- D More dense in coverage

Mixing scales are highly recommended for accurate and specific dispensing of the colour mix.



APPLICATION

In order to achieve optimum results, OSMO IKON® must be applied to dry, unwashed hair. Application is quick and precise due to the unique formulation of Micro-Connective Technology which allows the micro sized colour molecules to easily be absorbed into the hair shaft.

By applying too little product, the overall quality will be compromised, resulting in poor coverage, insufficient lift and low colour deposit which will lead to colour fade. Always ensure sufficient amounts of OSMO IKON® are applied to the hair to allow for maximum lift, deposit and total development of colour within each individual hair shaft, resulting in brilliant, long lasting colour results.

OSMO IKON® has a smooth, soft cream consistency when dispensed directly from the tube. When mixed with OSMO IKON® Cream Developers, a light creamy texture is achieved which aids in the release of key conditioning ingredients and allows for the full development potential of OSMO IKON® colour shades.

It is always recommended to use only OSMO IKON® Cream Developers when using OSMO IKON® hair colouring products.

The use of plastic bowls or shaker may be used when mixing OSMO IKON®. Mix carefully until a creamy consistency is obtained.

Permanent Colour Mixing Ratio

EXAMPLE:

1 part of OSMO IKON® 1-10 series
+ 1 : 1 parts of Cream Developer

30ml of OSMO IKON® 1-10 series
+ 30ml / 45ml of Cream Developer

'Long Lasting' Semi-Permanent Mixing Ratio

EXAMPLE:

1 part of OSMO IKON® 1-10 series
+ 2 parts Cream Developer 5Vol

30ml of OSMO IKON® 1-10 series
+ 60ml of Cream Developer 5Vol

N.B. - It's important to start application immediately after mixing the two components for optimum colour penetration, lift and/or coverage. When application is complete the mixed formula must be visible on the hair.



COLOUR BALANCING/ MATCHING SERVICE

When a client returns for a follow up visit, after their initial permanent colour service with OSMO IKON® Permanent Colour System, you have the option to utilise the benefits of OSMO IKON®s Hybrid/Dual system.

If your client has had a permanent colour taken through the entire hair to establish the desired OSMO IKON® colour result during their first visit, then, on their subsequent visit you would:

- Mix the same formula as their previous visit for the regrowth area and apply as per Manufacturer's instructions
- 15 minutes prior to full development time you would apply the same OSMO IKON® colour mixed with OSMO IKON® Cream Developer 5Vol to the mid lengths and ends.

This process will allow for the permanent colour to develop as required on the natural new growth (regrowth) area, yet allowing for the even more gentle mixture of long lasting semi permanent on the area of hair which has already been permanently affected during the last visit and should only require deposit of reflect/tone.

FIRST TIME APPLICATION

When applying a colour to 'virgin' hair it is important to take into consideration that the scalp radiates heat, creating what is known as 'root glow'. Therefore it is important to apply the colour 2-2.5cm away from the scalp only applying to the mid lengths and ends, when the pre-determined time has elapsed, the colour can then be applied to the root area for the remaining development time.

Below is a guide for development:

GOING DARKER

Step 1: Apply to the mid lengths and ends, avoiding the root area. Allow to develop for 5 minutes.

Step 2: Apply remaining product to the root area. Allow to develop further 40 minutes.

Total development time: 40 minutes

*Additional 5 minutes if coverage of white hair is required.

GOING LIGHTER

Step 1: Apply only to mid lengths and ends, avoiding the root area. Allow to develop for 20 minutes.

Step 2: Apply freshly mixed product to the root area, allowing to develop for a further 40 minutes.

HEAT

To reduce processing time, gentle heat using an accelerator can be used:

	at Room Temperature	with Gentle Heat
Processing Time	45 mins	30 mins
Processing Time	40 mins	20 mins
Processing Time	30 mins	15 mins

WHITE HAIR COVERAGE

NORMAL TEXTURE HAIR

When white hair coverage is an issue the following guide is a recommendation only and specific cases may need further adjustment of colour mix. On the whole the following guide is for normal textured white hair.

The mixing ratio in these cases should always be 1 part colour + 1 part 20Vol Cream Developer.

Total development time is 50 minutes, reducing this can cause lack of coverage.

Because OSMO IKON® coverage is designed to enhance natural looking results and not 'blanket or opaque' results the following indicator enables the colourist to choose the OSMO IKON® shade to be applied according to existing white hair percentage.

MIXING GUIDE

White Hair %	Natural Series	Fashion Target	Cream Developer
Up To 30%	Not Required	40ml	40ml 20Vol
30% - 50%	15ml	25ml	40ml 20Vol
50% - 70%	20ml	20ml	40ml 20Vol
70% - 100%	25ml	15ml	40ml 20Vol

When a natural result is required the following options may be used.

Coverage for up to 70% white hair requires using the same level as the remaining natural base or desired level mixed with 20Vol Cream Developer.

EXAMPLE:

Natural Base Level: 6

Desired Result (Target)	6
% White Hair	50%
Formula	30ml 6.0 + 30ml 20Vol Cream Developer

Coverage for 70-100% white hair requires using 1 level darker than the remaining natural base or desired level mixed with 20Vol Cream Developer.

EXAMPLE:

Natural Base Level: 6

Desired Result (Target)	6
% White Hair	90%
Formula	30ml 5.0 + 30ml 20Vol Cream Developer

RESISTANT WHITE HAIR COVERAGE

In situations where your client has glassy or resistant white hair and extra coverage is required, the following suggestions offer alternatives for best results.

It is always recommended to start with the first option and progress to the second and third only if necessary.

1. **Reduce Cream Developer - when mixing your formula you should reduce the amount of 20Vol Cream Developer by 25% as follows.**

EXAMPLE:

40ml total OSMO IKON® colour
+ 30ml 20Vol Cream Developer

This mixture should be applied and developed as normal ensuring as always that white hair has a sufficient amount of product.

2. **Pre Soften 1 - applying 'raw' tint to resistant areas.**

Choose natural on the same level as desired result, applying without the aid of Cream Developer, directly onto resistant area/s, this will allow a higher level of ammonia leading to greater opening of the hair cuticle and higher concentration of colour pigment to allow greater deposit of colour, immediately follow with the appropriate white hair formula applied directly onto the pre-softened and remaining regrowth/required area.

Ensure that a sufficient amount of 'raw' tint and the appropriate following formula is applied.

Normal development time should be applied - 50 mins.

3. **Pre Soften 2 - applying 20Vol Cream Developer prior to appropriate white hair formula.**

Dispense 20Vol Cream Developer in a bowl and apply with a tint brush to the resistant areas (this will open the hair cuticle to allow penetration of colour), then dry into the hair with a hair dryer on medium heat, then follow with appropriate white hair formula.

Do not apply too much 20Vol Cream Developer, however, ensure that a sufficient amount of appropriate white hair formula is applied. Normal development time should be applied - 50 mins.



COLOUR CORRECTION METHODS

REMOVAL OF ARTIFICIAL COLOUR

When there is the need to remove unwanted artificial colour from the hair, there are a number of options to choose from depending on the degree of removal required and most importantly the condition of the hair.

1-2 Levels of Removal

- 25g Power Lift Bleach
- + 5ml Deep Moisture Shampoo
- + 10ml Intensive Deep Repair Mask
- + 25ml 20Vol Cream Developer
- + 25ml Water

Apply to artificial colour only as this formula will lighten natural hair. Wearing gloves, apply liberally to slightly damp hair, starting at the darkest area first and gently working into the hair until maximum lift has been achieved.

Rinse product clear from the hair. Gently shampoo the hair with Colour Save Shampoo and Colour Radiance Mask.

- It is highly recommended that Colour Radiance Mask be used after every colour service as it contains antioxidants to remove chemical residue from the hair which helps to stop the oxidation process of the colour preventing 'creeping' oxidation, which is the major cause of colour loss. This service will lock the colour in to extend the longevity, intensity and durability of OSMO IKON® colour.

Consider this service an 'insurance policy' for your client's investment in their colour services.

- As lightening hair always creates warmth the need for an overlay colour to counteract or tone may be necessary, being mindful of the condition and porosity.

3 OR MORE LEVELS OF REMOVAL

When 3 or more levels of removal are required it is recommended to use regular OSMO IKON® Power Lift Bleach mixtures according to the levels of lift required and most importantly, the condition and porosity of the hair.

Apply to artificial colour only as bleach will lighten natural hair.

When applying this formula start at the nape of the head taking 1-2cm sections. Apply to the darkest areas first then lay a piece of cotton wool over the natural root area between each section to keep it from causing bleed out onto the natural hair. Proceed until the entire head/ area has been completed.

As working with bleach is based mostly on visual timing, it is most important to constantly check the progress until the required amount of removal has been achieved.



COLOUR LAYERING

This technique is used when a more gentle, yet longer lasting effect is required. It combines the layering of 2 or more 'tone on tone' applications.

The first application is suggested in the guide below, then the subsequent applications should be assessed after the first is completed.

Desired Result	OSMO IKON Fashion	OSMO IKON Natural	Cream Developer 5Vol
8	10ml 8.3	10ml 8.0	40ml
7	5ml 7.43	15ml 7.0	40ml
6	5ml 6.4	15ml 6.0	40ml
5	5ml 5.5	15ml 5.0	40ml
4	5ml 4.5 or 4.62	15ml 4.0	40ml
3	5ml 5.66	15ml 3.0	40ml
1	5ml 5.66	15ml 1.0	40ml

The above should be applied to clean, damp hair and developed for 15 minutes then rinsed. Do not shampoo after rinsing, towel dry and re-assess the hair at this stage. If the hair looks on the flat or matte side then re-apply with the same formulation as above.

If the hair looks relatively natural, the OSMO IKON® fashion part of the formulation may be removed simply by applying the desired natural level to the hair.

In some extreme cases a third application may need to be applied to achieve the desired results. If so you may need to select 1 level lighter than desired result.

In all cases of colour correction - removal of colour or colouring back - your client should always be advised of the need to take extra care of their hair and colour by using the appropriate OSMO® aftercare products to prolong the life of their colour.

Intensive Deep Repair Mask should be avoided directly after a colour application due to its very low PH level as this may squeeze the colour molecule out of the hair at its most vulnerable state. It is highly recommended to complete all colour services (especially colour correction) with Colour Radiance Mask to eliminate free radicals from the hair and assist in reducing the oxidation process.

COLOUR BACK TECHNIQUES

PRE PIGMENTATION

Pre-pigmentation is a technique used:

- When going 2 or more shades darker
- When colouring excessively porous/damaged hair
- To avoid flat/matte tones

When hair is lightened, not only does the level of depth get removed but also, the underlying pigment is first exposed then the lighter the hair is taken then eventually the underlying pigment is ultimately removed. However when we wish to replace depth in the hair, we also need to replace the underlying pigment so that true colour results are achieved.

The following is a chart displaying the underlying pigment that is present on every level. This can be used for working out both the underlying pigment that needs to be replaced and also the underlying pigment which needs to be considered when lightening hair.

Level Of Depth	Underlying Pigment	Counteracting Tone
10	Palest Yellow	Pearl
9	Pale Yellow	Pearl Violet
8	Yellow	Violet
7	Yellow-Orange	Violet-Blue
6	Orange	Blue
5	Red-Orange	Blue-Green
4	Red	Green
3	Red	Green
1	Red	Green

When you wish to pre-pigment prior to adding depth to the hair OSMO IKON® recommend using the appropriate level for the missing pigment.

Red = 4 level	Orange = 6 level	Yellow = 8 level
---------------	------------------	------------------



EXAMPLE:

Existing Level	9 pale yellow in tone
Desired Result	6
Pre Pigment using 6 level orange	6.4

EXAMPLE:

Existing Level	9 pale yellow in tone
Desired Result	7
Pre Pigment using 8 level gold	8.3

EXAMPLE:

Existing Level 9 pale yellow in tone	9 pale yellow in tone
Desired Result	3
Pre Pigment	4 level red = 4.6 does not exist therefore either 4.5, 4.62 or 5.6 could be used

MIXING:

1 part appropriate OSMO IKON® shade
+ 2 parts warm water

EXAMPLE:

10ml 8.3 + 20ml warm water

Apply sparingly to the areas required using a bowl and gently but thoroughly working into the hair to ensure full absorption. Do not saturate the hair, it should look like it's greasy not wet.

If needed remove excess product with a towel or slightly dry into the hair with a hair dryer.

Then immediately after the pre-pigmenting has been completed, the desired result mixture should be applied directly over the pre-pigmented area/s.

Develop and remove as per instructions for regular OSMO IKON® colour services.

Method of application is very important to the end result and should be considered throughout the process.

For more technical advice, hints, tips and
formula shares, join our Facebook group:
@OSMO IKON OFFICIAL



osmoikon[®]
PERMANENT HAIR COLOUR



PC 073654
MAR0196

www.osmo.uk.com
sales@osmo.uk.com

