

# Make-up & Accessories



arcaya  
GERMAN COSMETICS

CROWN

ELIXIR  
MAKE-UP

G  
Grande  
Cosmetics

Star Gazer

NICKA K  
New York

fab brows

Cala

diane.  
"FROMM"

STUDIO MASTER:

These are made with premium-quality synthetic fibres & aluminium ferrules. These fibres are much softer than animal hair bristles when properly made. They are more hygienic, antibacterial & hypo-allergenic than animal hair bristles. There is no or little shedding of bristles & they provide a clean & easy application tool. And of course, "animal cruelty-free"

*Cala*

Deluxe Powder Brush - perfect for blending & buffing for even, streak-free coverage  
10760



Angled Contour Brush - perfect for applying colour under cheekbones, jaw lines & other areas to sculpt & add definition  
10755



Foundation Brush - distributes liquid, cream or powder foundation, also perfect for blush, bronzer & powder  
10756



Dual Fibre Complexion Brush - use with powders to remove shine, or try it with blush. The 2 bristle lengths allow you to apply powder or foundation.  
10757



Concealer Brush - ideal for underneath eyes or for blemishes  
10758



Blending Brush - perfect for applying colour from lash line to brow bone  
10759



Shading, Large Brush - for eyeshadow for even coverage or smokier look  
10761



Eyeshadow Brush - for blending colour to add depth & definition  
10762



Angled Eyeshadow Brush - for precise application  
10763



Tapered Eyeshadow Brush - smaller, narrow bristle for more definition  
10764



Brow/Liner Brush - for eyebrows or eyeliner  
10765



Fine Eyeliner Brush - for powder eyeshadow or gel liner for a more dramatic look  
10766



Lip Brush - precisely line & fill your lips with the perfect amount of colour  
10767



Retractable Lip Brush - keeps bristles clean & protected  
10768



Sponge Tip Applicator 178mm  
13142



Dual-Ended Eye Shadow/Liner & Brow Brush 165mm  
13144



Dual-Ended Brow Brush 148mm  
13143





MAKE-UP & ACCESSORIES

Cala lip brush with cover  
6238



*Cala*

Cala large powder brush  
6227



*Cala*

Cala angled blush brush  
6228



*Cala*

Cala foundation brush  
6230



*Cala*

Cala concealer brush  
6231



*Cala*

Cala eyeshadow brush  
6232



*Cala*

Cala shading brush  
6233



*Cala*

Cala angled brow/liner brush  
6234



*Cala*

Cala eyeliner brush  
6235



*Cala*

Cala eyelash & brow groomer  
6236



*Cala*

Cala eyeshadow applicator with 3 heads  
6237



*Cala*

Cala Kabuki brush (2 tone)  
6239



*Cala*

Cala face & body brush  
6240

Fold-up pouch, 21 slots  
(brushes not included)  
8324



*Cala*

Cala Beauty brush sets



Cala 7 piece brush collection with silver pouch  
6241



*Cala*

Diane, double-sided make-up brush set, 5 piece  
9408



*diane*  
FROMM



Cala 12 piece artist's brush collection with black pouch  
6242

*Cala*

Cala 5 piece travel pouch  
8325



*Cala*

Cala 5 piece cosmetic brush kit, large  
6243



*Cala*

Total Face 4 brush set  
12313



*Cala*





**MAKE-UP & ACCESSORIES**

Duo Eye Care Essential Kit  
12320



Duo Facial Care Kit  
12319



Eye Defining 5 Brush Set  
12314



Contour Concealer Brush  
12315



Manicure Essential Kit  
12321



Contour Buffing Brush  
12316



Pointed Foundation Brush  
12317



Pedicure Essential Kit  
12322



Blending Brush  
12318



**CALA Urban Studio**

Eyeshadow Brush  
12609



Blush Brush  
12608



Powder Brush  
12607



Foundation Brush  
12610



Sponge Tip  
Applicators,  
12 pcs  
12592



*Cala*

**MAKE-UP & ACCESSORIES**

**Nicka K face & body shimmer**



Bronze  
7963



Pretty Pink  
7965



Orange  
7962



Purple  
7964



Peach Beige  
7960



Sparkling Gold  
7961

**Nicka K New York - Eyeshadow Palette**



Glam 7507  
Greens/Rust (5 shades)



Geisha 7508  
Browns/Orange (5 shades)

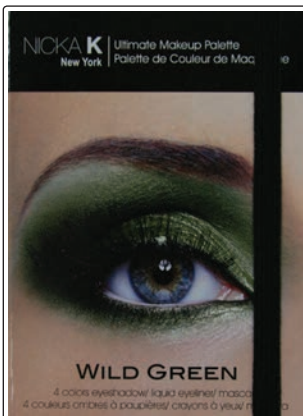


Island 7509  
Pinks/Purples (5 shades)



Studio 7531  
(12 shades)

**Nicka K New York Eyeshadow Kit with instructions**



Wild Green (4 shades)  
7501



Make-up  
mannequin base  
7447



Make-up mannequin  
mask (use with base)  
7449



Dual sharpener,  
assorted  
9495



**NICKA K**  
New York



## MAKE-UP & ACCESSORIES

### COLOUR COSMETICS - BY STARGAZER

#### Eyeshadow pen

Uses a very strong colour formula that goes on very easily & is easy to blend



Black  
8781

*Star Gazer™*

#### Metallic Eyeshadow pen



Amazing metallic finish, goes on smoothly with great, even colour.



Bronze  
8782



Gold  
8784



Pink  
8786



Silver  
8783



Blue  
8785



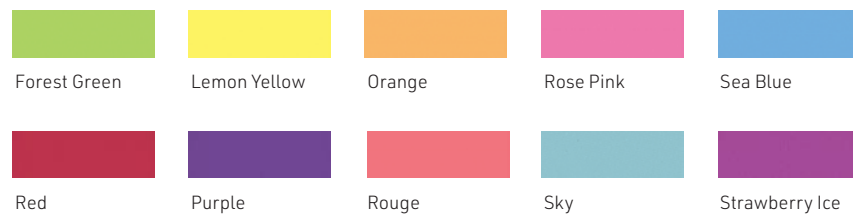
Brown  
8787

#### Palettes - all the shades you need

##### Eyeshadow Palette - 10 popular colours 8788



##### Vivid Colour Palette - 10 vivid colours 8789



##### Classic Pearl Palette - 10 colours 8790



##### Velvet Shadow Palette - 10 colours 8791



## MAKE-UP & ACCESSORIES

### Baked Duo Eyeshadow

Two high-colour shades baked together give you great shading flexibility



Blush  
8793



Denim  
8794



Pinky is Perky  
8795



Silver Streak  
8796



Smokey  
8797



### Pro Foundation

Intense shimmer, creamy formulation



Pearl  
8798



### Bronzer

Pressed powder Bronzer for a glistening, bronzed glow with a slight shimmer



Bronzer  
8799



### Gel Glitter

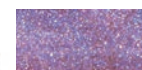
Face & body gel glitter can be applied straight around the eyes, on the face & the body with amazing results  
10ml



Silver  
8827



Gold  
8828



Pink  
8829



Blue  
8830

### Mascara - long-lasting



Black  
8800



### Liquid Eyeliner



Black  
8803



Blue  
8804

Easy application with the use of the thin-tipped brush



### Glitter Liquid Eyeliner - high glitter finish



Black  
8805

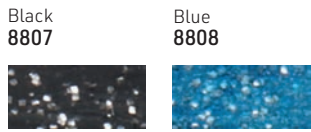




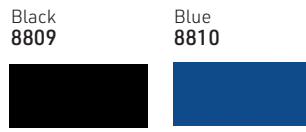
STARGAZER

EYES

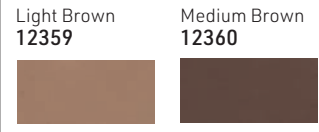
Glitter Pencils - huge glitter coverage with little effort



Semi-permanent Eye Liner Pen - stays up to 24 hours, thin pen



Eyebrow Pencil



Dark Brown 12361



LIPS

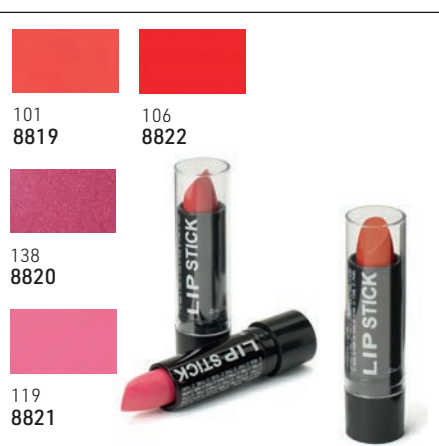
Semi-permanent Lip Stain Pen - lasts up to 24 hours



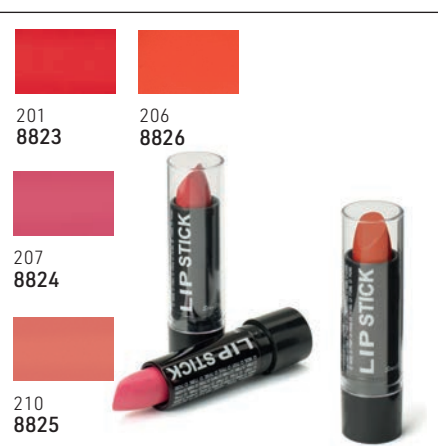
Fantasy Lip Gloss - designed to give a wet shine on the lips



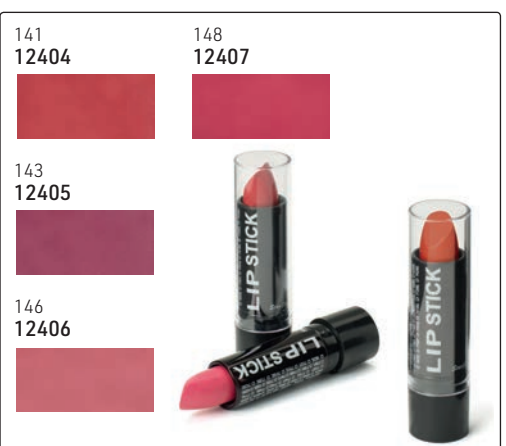
Lipstick - popular exotic colours



Matte Lipstick - translucent without sheen



Lipstick shades



Please note: due to hygiene reasons, make-up cannot be returned once purchased

## MAKE-UP & ACCESSORIES

### FAB Trio Contour Kit

**Fab Trio Contour Kit, including instructions & brush. Highlight! Define! Contour!**

Easy-to-use contour palette contains highlighting & contouring powders that work together to help you sculpt & define your natural features

12558

Each Kit includes:

- 3 powders to contour, define & highlight
- Angled contour brush

• Insert with top tips on how to contour  
Create the illusion of supermodel cheekbones or slimmer nose with these soft, silky powders. Can be applied as subtly or dramatically as you like

# fab brows



### Palettes - all the shades you need



**Sea & Sky Palette - 10 greens & blues**  
12355



*Star Gazer™*



**Flower Power - 10 pinks & purples**  
12356



**Day to Night - 10 shades of browns & bronzes**  
12357



**Blusher Palette - 10 amazing shades, a colour for every look**  
12358





Powder brush, large  
3869



Oblique angle brush mini  
5478



Tapered corrector brush  
3865



Powder brush mini  
5479



Treatment brush  
4983



*Cala*

Rose Bliss  
Foundation brush  
12617

Pro Contour brush  
12618

Bronzer brush  
12619

Make-up brush set  
4 pieces  
12620



*Cala*

Velvet Touch Facial Brush set x3  
12611



*Cala*

The Contour Artisan set x3  
12612



*Cala*

Elixir

A well-priced, great value make-up line, suitable for everyone. Great pigments, long wear, yet very affordable. Also great for colleges

**Superstay Matte Lipstick**

Extraordinary smooth application, matte effect & lasting colour on your lips! Protects lips & restores their softness with its exceptional hydrating & softening properties.



M1 12636	M2 12637	M7 12638	M10 12639	M16 12640	M18 12648	M17 12649	M14 12650	M15 12651	M13 12652
M5 12644	M11 12645	M12 12646	M19 12654	M4 12655	M6 12656	M8 12657	M9 12658	M20 12642	M3 12643

**Lip Gloss Matte**

A burst of creamy colour, which sets a stunning matte finish. Durable, lightweight & delightfully creamy, with no drying or cracking effect.



330 12709	331 12710	334 12713	335 12715	336 12716	337 12717	338 12718	339 12719	340 12720

**Long-lasting Matte Lipstick**

A well-priced, great value, make-up line suitable for everyone. Great pigments, long wear, yet very affordable. Also great for colleges. EXTRAORDINARY SMOOTH APPLICATION, MATTE EFFECT & LASTING COLOUR



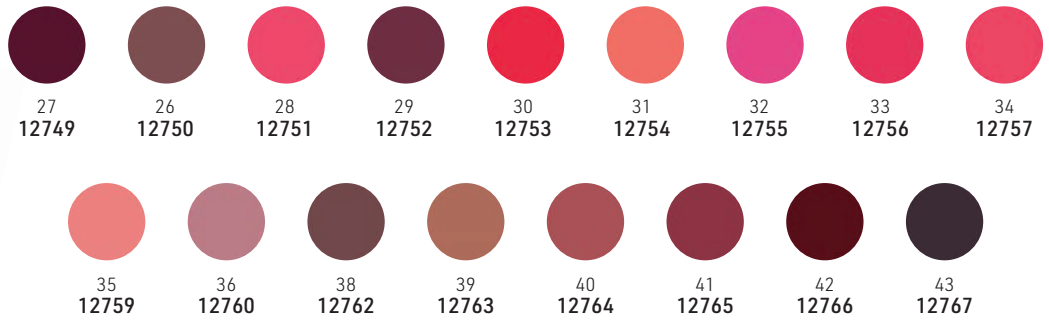
M65 12660	M59 12661	M58 12662	M46 12663	M64 12664	M62 12666	M67 12667	M44 12668	M68 12669	M48 12670
M43 12672	265 12673 (not matte)	M51 12674	M47 12675	M69 12676	M42 12678	M66 12679	M45 12680	M49 12682	M41 12684
M57 12685	M50 12686	M56 12687	M52 12688	M60 12690	M55 12691	268 12692 (not matte)	M54 12693	M53 12694	264 12681 (not matte)
262 12696	276 12697	223 12698	236 12699	209 12700	214 12702	215 12703	267 12704	210 12705	213 12706



Elixir

**Lip Pencil Waterproof**

Designed for shaping, lining or filling in of the lip. Smooth, creamy texture that is perfect to give you an ultra-glamorous look.



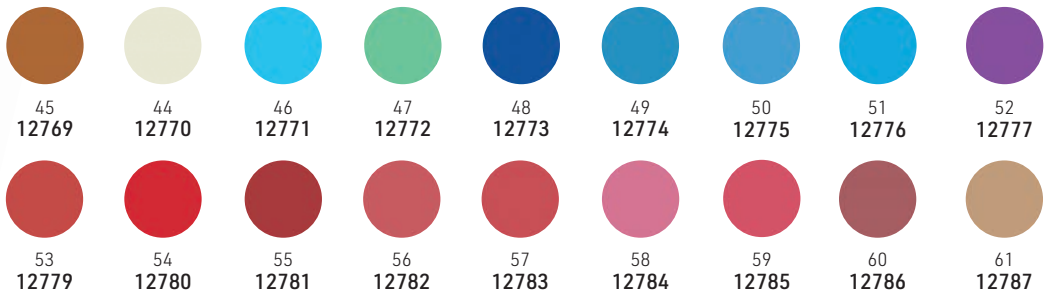
**Eye Pencil Waterproof**

Silky-soft formula which allows for precise, easy application & versatile looks. Use to define or to intensify your eyes. By gliding the smudger over the eyeliner, you will achieve a sexy, smoky result.



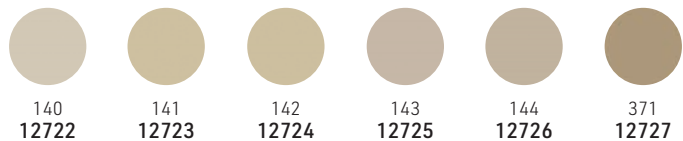
**Eye & Lip Pencil Waterproof**

The perfect all-in-one make-up pencil that every woman should have. This unique pencil is perfect for both eyes & lips & will stay in place all day.



**Liquid Concealer**

Brightens & lightens dark areas, erases spots, evens out skin tones. Blend away redness, blemishes & irregular pigmentation in an easy-to-apply fluid consistency. Spread evenly under your eyes or on skin marks & your face will shine like never before!



**Brighten your eyes with shiny colours in shades of the rainbow**



5 colours, single, Bronze  
12827



5 colours, single, Pink/Purple  
12829



5 colours, single, White/Grey/Black  
12831



Elixir

**High-Pearl Triple Eyeshadow**

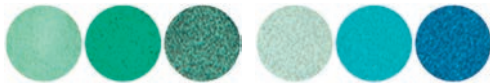
11 - 12817

12 - 12818



13 - 12819

14 - 12820



**Satin Eyeshadow Palette**

The creamy texture gives you a charming look that lasts all day. These eyeshadow colours are pigment-rich with an ultra-soft texture.

843 - Palette 24 Colours  
12800

824 - Palette 40 Colours  
12801



**High-Pearl Eyeshadow**

Brighten your eyes with shiny colours in shades of the rainbow. Its advanced composition gives you a seductive, mysterious & alluring look that lasts throughout the day, without the need for multiple layers.

808 - Palette  
21 Colours  
12808



Singles:



01  
12810

02  
12811

03  
12812



04  
12813

05  
12814

06  
12815

**Wet & Dry Eyeshadow**

The wet & dry series offer an excellent eyeshadow that highlights your eyes, giving you a radiant look that lasts all day. Use "Dry" for sheer colour & "Wet" for dramatic & long-lasting shades. Formulated for the fullest & richest coverage with an imaginative palette of irresistible colours, from nude to provocative shades.

844 - Palette  
24 Colours  
12802



Singles:



07  
12804

08  
12805

09  
12806

10  
12807

**Eyebrow Pencil**

Match your natural eyebrows perfectly with one of the 5 shades available. Perfect for filling in of brows & defining your brows.



200  
12789

201  
12790

202  
12791

203  
12792

204  
12793

**High-Pearl Triple Eyeshadow**

15  
12822

16  
12823

17  
12824

18  
12825



**Silky Blusher**

Nothing has a more instantly transformative effect than blush & will complete your look. This palette gives you a wide range of colour options & will transform your look from day to night in an instant.

860 - Palette  
10 colours  
12794



Singles.



301  
12796

303  
12797

311  
12798

312  
12799

**Liquid Liner**

Long-lasting liquid liner which allows you to emphasize your eye with sharp, defined precision. Creates deep & mysterious gaze with its rich colour & fast dry texture.

Individual  
12836



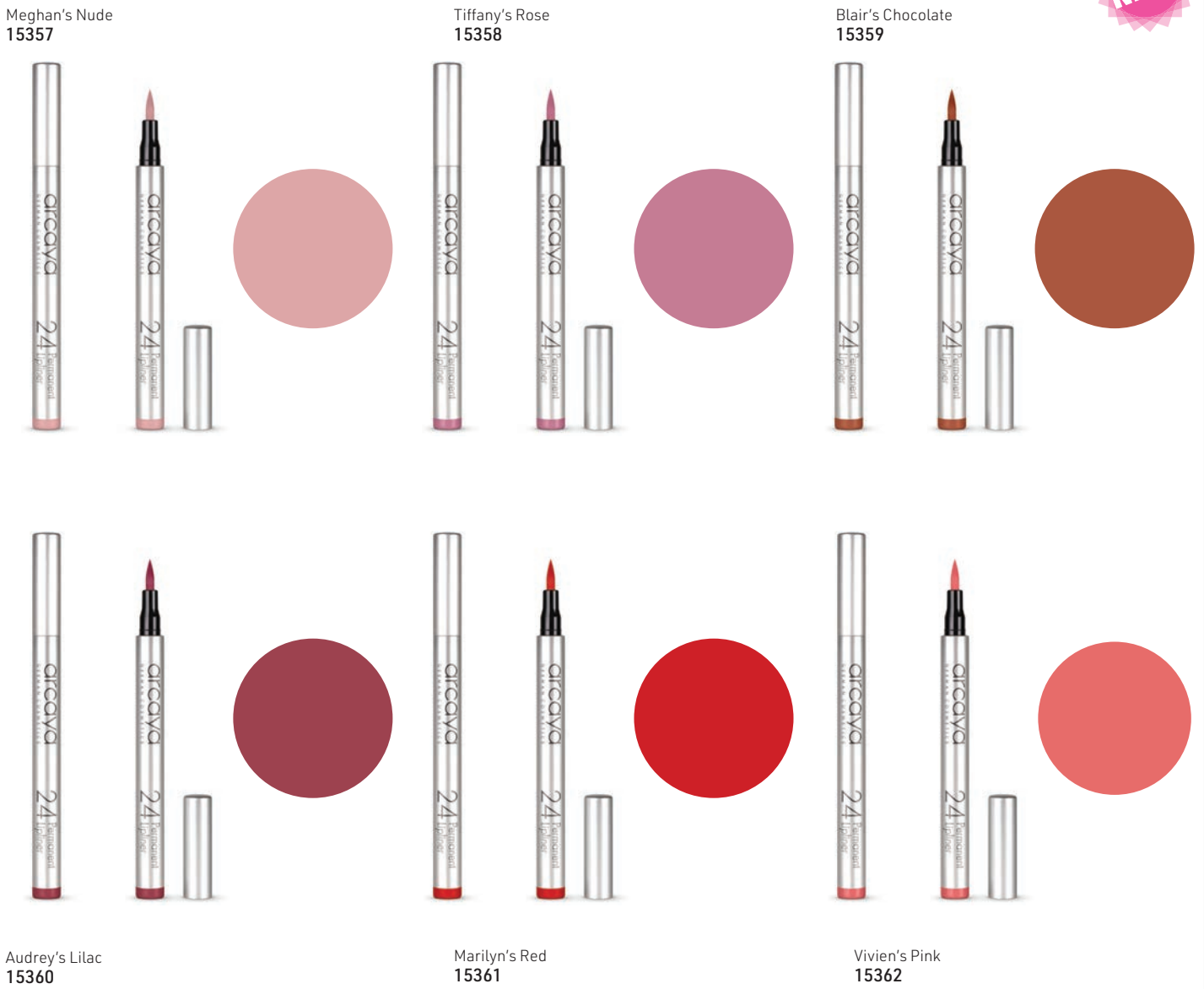


NEW! From arcaya - Permanent Eye & Lip Liner

Permanent Eye Liner, 1.5ml  
Waterproof - no smudging, fading, blurring or discoloring. Stays on for 24 hours.  
Tip: Remember to store liners tip down to ensure they do not dry out



Permanent Lip Liner, 1.5ml  
Waterproof - no smudging, fading, blurring or discoloring. Stays on for 24 hours  
Tip: Remember to replace the lid properly after each use



BB-CC-DD - 30ml

BB, CC or DD: a combination of good skin care & a flawless, natural complexion! Originally developed by German dermatologists as a skin care product for special needs, Blemish Balm (known as BB for short) is now a fixed component in the skin care routine of women around the world. arcaya offers an innovative trio for different skin types: BB, CC & DD creams are the fast & easy route to a natural, fresh look.

**BB Cream**  
**Correcting blemish balm for all skin types**

The arcaya BB-Cream is a true all-rounder 5-in-1: Provides optimum moisture, conceals skin imperfections & wrinkles, smoothes the skin's surface, gives a radiant complexion & protects with SPF 15. Facial care in a single step with the result of a perfect skin! Available in the lighter nuance "Natural 01" & the darker nuance "Sand 02".

**Use:** In the morning after cleansing, equally apply a sufficient amount of BB. For very dry skin, a moisturizer can be used before.

Cream Natural 01  
15722



Cream Sand 02  
15723



**CC Cream**  
**Colour Correction for an even skin tone**

The arcaya CC-Cream, in the light nuance "all skin colour", ensures seamless correction of minor skin problems: Colour pigments, which combine with the individual skin tone, reduce redness, fine lines & wrinkles. Biopolymers & soybean oil are nutrient deposits, which revitalize the tired & dull skin. Result: definitively improved, fresher skin with a more even complexion!

**Use:** Use CC-Cream daily, on its own, under or over your make-up & for little repairs during the day.

For all skin colours  
15724



**DD Cream**  
**Regenerating Blemish Balm with anti-wrinkle effect**

The arcaya DD-Cream is the multi-all-rounder: Wrinkles & blemishes are reduced. Anti-ageing ingredients prevent skin ageing & protect against sun rays with SPF 15. Perfect to disguise wrinkles. Available in the lighter nuance "Natural 01" & the darker nuance "Sand 02".

**Use:** In the morning after cleansing, equally apply a sufficient amount of DD. For very dry skin, a moisturizer can be used before.

Cream Natural 01  
15725



Cream Sand 02  
15726





HH&B is proud to be associated with professional make-up brush company CROWN

Crown has been manufacturing professional-quality cosmetic brushes for over 20 years. It provides superior service & price while maintaining the highest standards of manufacturing. Key principles have made Crown a recognized leader in the International Beauty Industry. Crown has established a global reputation for quality & service.

"We are truly dedicated to making a better brushes for the everyday professional." Whatever kind of make-up brush you are looking for, Crown offers a variety that will more than likely satisfy your needs. The search for a good make-up brush is over!

**Crown PRO**

These top-of-the-line brushes are made with the highest grade of natural hairs & synthetic fibers, resulting in exceptionally soft, incredibly sturdy, one-of-a kind brushes. Specifically designed for professional make-up artists, these brushes are handcrafted to help achieve even the most intricate of make-up designs. Each of these individual brushes serve a specific cosmetic purpose, yet still maintain their versatility & usefulness, making them must-haves for every professional make-up kit. The Crown PRO series currently consists of 30 brushes, but continues to grow & develop.



**Colour Palettes**

Full coverage colour palettes with a variety of colour combinations for different sections of the face with specific make-up purposes.

**Lip Palette**

**20 Colour Lip Palette**

A colourful array of lipstick colours that include neutrals, bright & bronze colours that are creamy, matte & shimmery. Shades can be mixed & blended to create custom colours. Perfect for every day or for special occasions.

**13266**



**15 Colour Foundation Palette**

Easy-to-blend array of shades from light to dark skin tones

**13097**



**10 Colour Powder Contour Palette**

Very light to dark tones for any skin complexion

**13102**



**12 Colour Blush Palette**

Intense colour for cheek area

**13092**



**20 Colour Concealer/Contour Palette**

Blendable concealers & correctors for highlighting & contouring

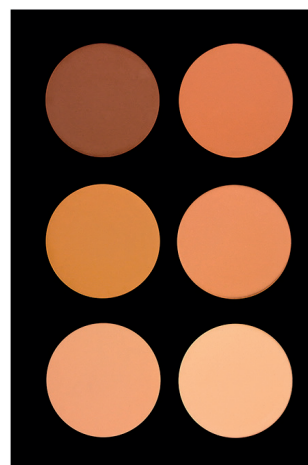
**13121**



**6 Colour Pressed Powder Palette**

Blendable light to medium shades for coverage, neutralisation & contouring

**13234**



**10 Colour Brow Palette**

Shade ranges from light blonde to deep black/brown that can be blended

**13235**

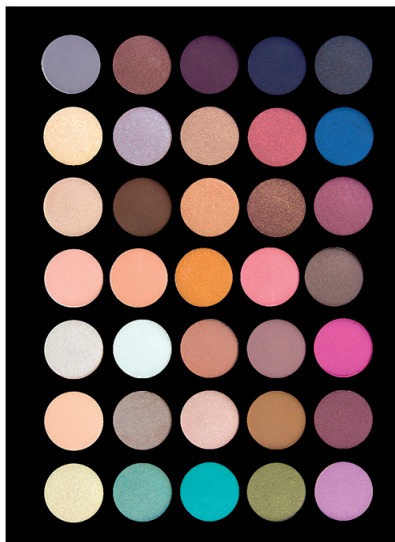


HH&B is proud to be associated with professional make-up brush company CROWN

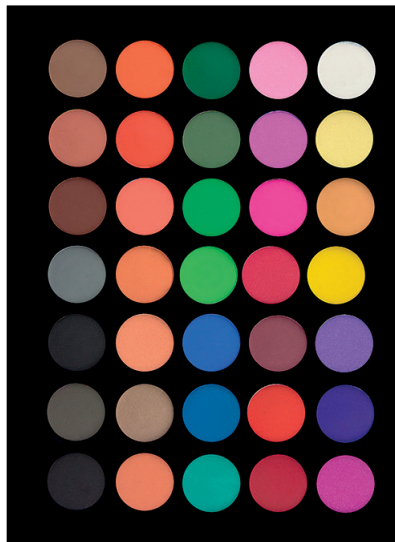
**35 Colour Eyeshadow Palettes**

A highly-pigmented, all-encompassing eyeshadow palette with a variety of colour combinations of each colour family. Each palette is very rich in colour & pigment & is omega-enriched & long-lasting.

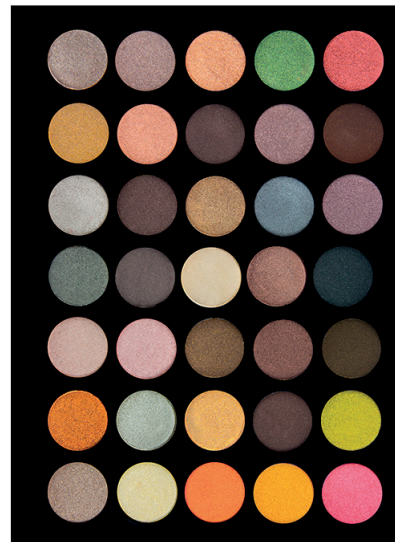
**"Back To Basics"**  
Variety of shades for neutral, colourful & bold or smokey & sultry  
**13122**



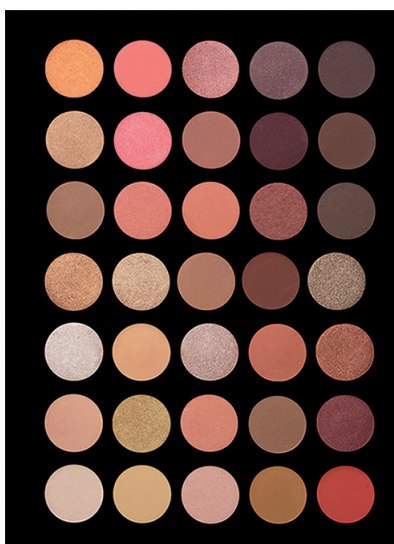
**Matte**  
Combination of neutral & bold colours  
**13123**



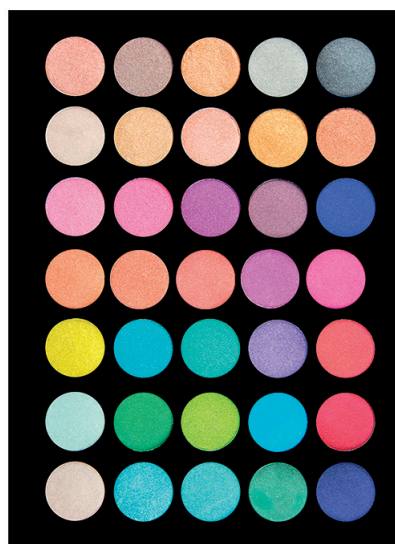
**Metal**  
For wet & dry for neutral & bold colours with metallic, shimmery finish  
**13124**



**Rose Gold**  
Warm golds, browns & pinks in matte & shimmer shades  
**13138**



**Shimmer**  
Bold, colourful shades with neutral tones  
**13140**







HH&B is proud to be associated with professional make-up brush company CROWN

5 Color Highlighter/Illuminator  
16002



20 Piece Pro Smoke Eyeshadow Palette  
16003



10 Piece Fuego Eyeshadow Palette  
16018



6 Piece Bronze & Glo Palette  
16004



6 Piece Pro Blush & Go Palette  
16005



35 Piece Neutral Java Eyeshadow Palette  
16129



16 Piece Chroma Eyeshadow Palette  
16025





HH&B is proud to be associated with professional make-up brush company CROWN

Longwear Foundation, 30ml

The Crown Pro Longwear Foundation is a medium to full coverage blendable foundation that leaves behind a flawless finish all day long. This hydrating formula is perfect for those who like a dewy, youthful complexion & expect their foundation to last from morning till night. To use, apply your Crown Pro Longwear Foundation with your favourite Crown foundation brush or use a face blender for an all-over, even application.



Light  
16006

Fair  
16007

Beige  
16008

Medium Beige  
16009



Tan  
16010

Dark  
16011

Sparkling Illuminators, 30ml

Create soft, sophisticated glow. Introduces warmth to the face with a radiant complexion. Use every day or for show-stopper looks.



Frosted Pink Glow  
16012

Golden Glow  
16013

HH&B is proud to be associated with professional make-up brush company CROWN



Long-Lasting Matte Lip Stain, 6.5g

Designed for professional make-up artists, the Crown Pro Long-Lasting Matte Lip Stains stay on the lips all day long with no bleeding or streaking of color & eliminate the need for constant touch-ups. They are soft on the lips & feel naked to the touch, making them perfect for those who like drama & intensity in their color, but a lighter & softer feel on the lips. The finish is completely matte.



Barely Nude  
16014

Blushing Pink  
16015

Dusty Rose  
16016

Sangria  
16017



Malibu Sunset  
16019

VIP  
16020

Caliente  
16021



HH&B is proud to be associated with professional brush company CROWN

Make-up Brushes

A variety of brushes with different size, structure, design & bristle composition that caters to any need of a professional make-up artist.

Pro Pointed Powder/Contour Brush

- For powdering difficult areas with tapered end
  - Suitable for powder products • Seamless blending & contouring
- 13236



Pro Flat Powder Brush

- Medium to full coverage with wide, flat cut
  - Suitable for powder products • Luxurious, ultra-plush bristles
- 13237



Pro Duo Fibre Round Blender Brush

- Foundation blending brush
  - Synthetic bristles disperse & blend while natural bristles hold brush's shape
  - Suitable for all make-up products
- 13238



Pro Angle Bronzer Brush

- Versatile head & surface for bronzing
  - Covers large areas for natural complexion
  - Suitable for pressed powders, loose powder & liquid foundation
- 13239



Pro Angle Contour Buffer Brush

- Easy gliding along natural curves
  - Suitable for powder products
- 13240



Pro Jumbo Shadow Brush

- Large shape & natural, stiff bristles for powdered eyeshadows
  - Minimum shadow fallout
- 13241



Pro Powder Shadow Brush

- Small & compact for precise eyelid powdering & blending shadows in difficult crease areas
  - Suitable for loose & pressed powders
- 13242



Pro Angle Blender Brush

- Tiny shape & angled for blending difficult areas like eyes & nose
  - Synthetic fibres suitable for liquids, powders & creams
- 13243



Pro Detail Concealer Brush

- Medium-sized for concealer for under the eyes as well as highlighting & concealing the T-Zone
  - Suitable for liquids, powders & creams
- 13244



Pro Oval Shader Brush

- For controlled eyeshadow placement - elaborate, multi-shadow looks
  - For cleaning & highlighting under the brow
  - Suitable for powder products
- 13245



Pro Blending Fluff Brush

- Pack shadow onto the lid & blend out shadow for a natural look
  - For precise placement of difficult areas of the eyelid
  - Suitable for powder products
- 13246



Pro Sculpting Crease Brush

- For blending shadow in difficult crease areas of the lid
  - Disperses full coverage of smokey eyes
  - Suitable for powder products
- 13247



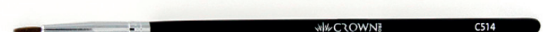
Pro Detail Crease Brush

- Bullet shape for creases of the eyelid, eye corners & under eyebrow
  - Creates depth, highlights & intensifies smokey eye looks & lash lines
  - Suitable for powder products
- 13248



Pro Detail Liner Brush

- For traditional & winged eyeliner styles
  - Glides with eye shape
  - Suitable for powder products
- 13249



HH&B is proud to be associated with professional brush company CROWN

**Pro Precision Crease Brush**

- Bullet shape for eyelid creases crease of the eyelid
- Creates depth & intensity for smokey eye looks & lash lines
- Suitable for powder products

**13250**



**Pro Lush Powder Brush**

- Medium to full coverage with touch-ups
- Suitable for pressed powders, loose powders & mineral foundations

**13252**



**Pro Curved Contour Brush**

- Glides with natural cheek shape for organic contouring with its firm shape
- Suitable for powders & creams

**13254**



**Pro Highlight Contour Brush**

- For perfect highlighting & brushing
- Glides over cheekbones for a natural complexion & blended contour
- Suitable for liquid, powder & cream cosmetics

**13256**



**Pro Round Blender Brush**

- Packs powder onto difficult areas such as under the eyes & nose bridge
- Easily buffs product into the skin
- Suitable for loose & pressed powders

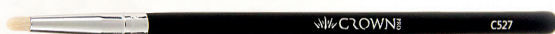
**13258**



**Pro Pointed Smudger Brush**

- Fits along lash line for applying & blending cut-crease styles
- Gentle, natural bristles do not irritate the eye area
- Suitable for powder products

**13260**



**Pro Jumbo Blending Crease Brush**

- For blending quickly & seamlessly over larger eye areas for eyeshadows
- For highlighting higher points on the face like cheekbones & nose bridges
- Suitable for powder products

**13262**



**Pro Lush Pointed Powder/Contour Brush**

- Pointed shape for powdering under the eye & around the nose
- Tapered cut results in easy blending & contouring
- Suitable for liquid, powder & cream cosmetics

**13264**



**Pro Precision Dome Blender Brush**

- All-in-one face brush with dense head for all facial areas
- For blending, highlighting, contouring & application
- Suitable for powders & liquids

**13251**



**Pro Lush Blush Brush**

- Controlled application of blush for cheeks & periphery of face
- Suitable for powder & cream blushes

**13253**



**Pro Flat Contour Brush**

- Glides easily under the cheekbone for linear contour shape
- For baking & cleaning lines with large surface area
- Suitable for liquid, powder & cream cosmetics

**13255**



**Pro Mini Flat Contour Brush**

- For contouring delicate facial areas such as nose bridge, brow & eye area
- Suitable for liquid, powder & cream cosmetics

**13257**



**Pro Dome Crease Brush**

- Seamlessly blends shadow along creases & outer corners of the lid
- Enhances, adds depth & intensifies smokey eye designs & blends
- Suitable for powder products

**13259**



**Pro Crease Detail Brush**

- Adds detail, depth & intensity to eyeshadow looks
- Provides a smokey effect & is ideal for outer creases of the eye & bottom lash line
- Suitable for powder products

**13261**



**Pro Detail Powder/Contour Brush**

- Tapered end for packing powder around eye area & difficult areas around nose
- A natural contour brush for seamless blending
- Suitable for powder products

**13263**



HH&B is proud to be associated with professional brush company CROWN

12 Piece Professional Brush Set with Case

- Professional brushes complete with convenient carry case for easy storage & access
- Includes 12 brushes of different structure & bristle design for a comprehensive collection

13046



24 Piece Professional Brush Set with Case

- Professional brushes complete with convenient carry case for easy storage & access
- Includes 24 brushes of different structure & bristle design for a comprehensive collection

13066



23 Piece Professional Brush Set with case

- Professional brushes complete with convenient carry case for easy storage & access
- Includes 23 brushes of different structure & bristle design for a comprehensive collection

13348



11 Piece Studio Pro Set

- Comprehensive make-up brush set
- Provided with a black roll-up case for storage & on-the-go applications
- Includes: Duo Fiber Powder Brush, Angle Blush Brush, Tapered Blush Brush, Powder Dome Brush, Foundation Brush, Blending Fluff Brush, Crease Brush, Concealer Brush, Blending Crease Brush, Angle Liner Brush, Pointed Liner Brush

13033



Highlighters & Illuminators

Blush!Bronze!!!lluminate!!!

- Comprehensive full-face contour package
- Deep bronze for a rich foundation
- Pink shade to add colour & warmth to the face
- Illuminating shade to add depth & complexity

13267



Bronzer Matte/Fair

- Perfect shade of warm brown for a natural, sun-kissed glow
- Gently sweep across face for a natural glow

13268



Sunkissed Illuminator

- Shimmery, golden highlighter with peach & gold reflections for warmth & highlight to the face
- Adds an illuminating finish to complete any look.

13269





Brush Bags

10 Pocket Brush Case Black,  
279.4mm x 266.7mm, leatherette  
**13145**



17 pocket brush belt  
This brush belt contains 17 pockets, allowing the artist to move around freely while carrying a variety of brushes, tools & accessories comfortably around their waist. It comes with an adjustable strap & is made from a soft, leather-like polyurethane material. Beauty retailers can create a uniform look for their employees by outfitting them with this versatile brush belt.  
82mm x 101mm  
Adjust to fit waist sizes 81.3cm - 101.6cm  
**13147**



Diane Body Brush Set, 7 piece  
**10450**



diane  
FROMM

Brush Set In Front Snap Case Black

5 Piece Pouch  
This convenient 5-piece basic make-up brush set comes packaged in a black nylon snap front case. Great for travel, this item can also be used for special promotions & giveaways.

- Includes:
- Angled Brush
  - Detail Brush
  - Powder/Bronzer Brush
  - Blush Brush
  - Eyeshadow Brush
- 13149**



Brush Set In Front Snap Case Black

6 Piece Pouch  
This convenient 6-piece basic make-up brush set comes packaged in a black nylon snap front case. Great for travel, this item can also be used for special promotions & giveaways.

- Includes:
- Angled Brush
  - Detail Brush
  - Powder/Bronzer Brush
  - Shader Brush
  - Flat Topper Eyeshadow/ Concealer Brush
- 13150**



Cleansing Brush Gentle Facial with Cover & Handle  
Gently cleanse or exfoliate during skin care treatments with this reusable facial brush. The included cover helps protect the nylon bristles from bending when stored.  
146.1mm  
**13151**



Medium Flat Multi-Purpose Brush  
This flat, multi-purpose brush featuring nylon hair can be used for applying body or facial masks, cleansers, cream, make-up or even glycolic treatments. Use the flat side of the brush for all-over application & the tip for more precise application.  
141.96mm  
**13192**



Cleansing Body Brush  
**13153**



Cleansing Brush Facial with Cover  
**13152**



**MAKE-UP & ACCESSORIES**

**Sponges & Wedges**

Thin cleansing sponge  
(2 per pack)  
4711



diane

Loose powder puffs  
(2 per pack)  
4712



diane

Compact powder puffs  
(2 per pack)  
4713



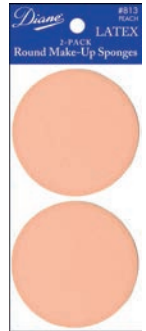
diane

Make-up sponges,  
square, latex (2 per pack)  
4715



diane

Make-up sponges  
latex, round (2 per pack)  
4716



diane

Make-up wedges, latex  
(32 per pack)  
4717



diane

Make-up wedges, non-latex  
(12 per pack)  
4718



diane

Contouring Sponge  
7227



Cala

Cosmetic Sponge assortment,  
a sponge for every occasion  
7228



Cala

Sponges, on the go  
(11 items)  
7229



Cala

Cosmetic Rounds (4 per bag)  
7230



Cala

Thick cleansing sponge  
(1 per pack)  
4710



Cosmetic sponge  
(4 per pack)  
2998



Cellulose Cleansing Sponge  
(2 per pack)  
4985



Make-up sponges, latex (4 per pack)  
4714



CALA  
Easy Beauty  
Blender "Slant"  
in Box  
11603

CALA  
Easy Beauty  
Blender "Corn"  
in Box  
11602



Cala

Powderpuff, Large  
5831





**MAKE-UP & ACCESSORIES**

**Sponges**

Diane Jumbo Mesh Body Sponge, various colours  
**10444**



diane

Diane Stone Bath Sponge  
**10445**



diane

Round Spa Sponge  
**7813**



Body Exfoliating Sponge  
Medium texture  
**11407**  
Soft texture  
**11408**



Sponges  
Wedge Sponge  
Block White  
Latex-Free  
24pcs  
**13134**



Sponges, 80mm diameter  
13/box  
**12093**



Sponges, 100mm diameter  
13/box  
**12094**



Diane Blending sponge with handle, non-latex, blue  
**11293**



diane

Face blender  
Lilac  
**11802**  
Light pink  
**11811**



Face bobbles, assorted  
18 piece stand (not shown)  
**12099**  
Single, assorted  
**12473**



Diane Assorted sponges (24/pk)  
**9644**



diane

Diane Blending sponge, non-latex  
**9643**



diane

Cala Cellulose Cleansing sponges (2/pk)  
**9681**



Cala

Cala Blending sponge  
**9680**



Cala

Cala Cosmetic wedges (8/pk)  
**9679**



Cala

Cala Rainbow pop wedges  
x 8 pieces  
**12593**



Cala

Cala Duo Make-up blending sponges  
2 per pack  
**12595**



Cala

Cala Mini blending sponges x 4  
**12596**



Cala

Cala Deluxe Blending sponges x 4  
**12597**





Cala

Cala

**Flawless Blend Sponge & Holder**

Keep your make-up sponge clean & fresh. Just pop the sponge in the holder to keep it in a place when not in use. Non-latex sponge. The perfect tool for an even, flawless coverage.

14984



Cala

NEW!

**Urban Studio Dual Blender & Teardrop Sponge**

3 unique shapes for your specific blending needs. The dual blender is for precision blending. The teardrop's wide base is ideal for buffing large areas, while the pointed tip effortlessly contours the curves around the nose, chin & under the eyes.

15014



Cala

NEW!

**Silicone Facial Mask Brush, 2 pieces**

- Spreads mask evenly, easily & precisely  
- Silicone brush heads are durable, easily cleaned

14993



Cala

NEW!

**Urban Studio Pro Blending Sponge**

Latex-free, allergy-free, use damp or dry

Pink  
14981



Skin Tone  
14982



Sea Green  
14983



Cala

NEW!

**Dual Action Facial Cleansing Brush**

Soft bristle, helps remove excess oil, dirt & make-up, deeply cleaning the skin for more radiant & healthier looking skin. Ideal for daily use. Manually operated.

14989



Cala

NEW!

**Smooth 'n Sheen Exfoliating Sponge**

- Gently exfoliates as it lathers product & buffs away dead skin cells & impurities

15015



Cala

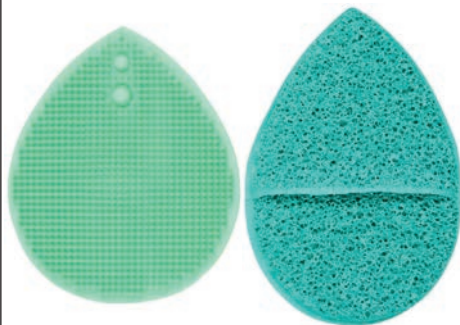
NEW!

**Smooth 'n Sheen Facial Exfoliating Duo**

- Silicone Cleansing Brush invigorates & massages the skin with fine, flexible bristles that increase circulation

- Exfoliating Sponge gently exfoliates as it lathers product

15016



Cala

NEW!

**Day to Night Blender & Cleansing Sponge Duo**

- Make-up Blending Sponge flawlessly builds & blends foundation for natural-looking coverage during the day, whilst the pillow-soft cleansing sponge gently cleanses & dissolves make-up to reveal radiant, refreshed skin.

14990



Cala

NEW!

**Facial Cleansing Sponge**

- Cleanse & refresh  
- Gentle enough to cleanse away dirt, residue & make-up for a soft, even complexion

14985



Cala

NEW!

Cala

Cala

**Cala Enchanted Glam Dreamy Complexion Face Brush Set**  
Quality ombre unicorn finish with different sizes & styles  
3 brushes: Powder, Angled Blush & Foundation  
**13967**



Cala

**Cala Enchanted Glam Unicorn Angled Blush Brush**  
Quality ombre unicorn finish with firm grip area  
**13964**



Cala

**Cala Enchanted Glam Unicorn Powder Brush**  
Quality ombre unicorn finish with firm grip area  
**13965**



**Cala Rose Quartz Shimmer Eye Essentials Kit (x4)**  
Rose gold glitter finish  
4 brushes of different sizes & styles for eye area  
**13969**



Cala

**Cala Rose Quartz Flawless Face & Eye Set**  
4 brush set with different styles & sizes  
Ideal for full face & eye area  
**13974**



Cala

**Cala Urban Studio Make-Up Brush Scrub**

- Flexible scrub with grooves & contours to clean brushes of debris, skin & product build-up
- Fits in hand for better accessibility during sessions
- Does not alter bristle alignment, shape or structure

Hot Pink  
**13847**  
Teal Green  
**13848**



Cala





Cala

Cala

**Cala Urban Studio Brush Cleaning Pad**

- Removes product build-up without drying time due to absorbing material
- Saves time & ensures top quality performance from brushes
- Does not alter bristle alignment, shape or structure

13849



Cala

**Cala Urban Studio Brush Cleaning Palette**

- Multi-textured surface for all brush types to remove dust, debris & product build-up
- Fits comfortably on wrist for easy access
- Improves hygiene & brush surface for smooth, even make-up application
- Does not alter bristle alignment, shape or structure

Purple  
13851

Teal Green  
13852



Cala

**Silicone Make-Up Brush Set, 6 Pieces**

- 6 pieces for precise application to create natural, sophisticated looks
- Silicone material is non-absorbent which prevents make-up wastage

Pink  
14220

Lavender  
14221

Cala



**Cala Urban Studio Brush Cleansing Pad Pink**

- Flexible pad with different grooves & contours to remove dirt, debris & build-up
- Maintains brushes to last longer & improves hygiene
- Does not alter bristle alignment, shape or structure

13966



Cala

**Cala Silicone Make-Up Sponge Duo Set**

- Non-absorbent material that uses less make-up to minimise wastage & provide a more natural, balanced, blended look



Silicone & bobble  
13970

Clear & blue  
13971

Pink & gold  
13975

**Cala Urban Studio Silicone Make-Up Blender**

- For more natural blending with soft material
- Non-absorbent material to minimize wastage

Square-shaped  
13912

Tear-Shaped  
13698

Cala



Clear & gold  
13972



Clear & pink  
13973

Cala





**Finger Mitt Facial Exfoliating Sponge**  
Hot Pink - 98.24mm x 64.58mm

Gently cleanse & exfoliate during skin care regimens using this reusable facial exfoliating sponge. Comfortably fits onto fingers to help exfoliate hard-to-reach areas.

Easy to clean, simply wash with mild soap & rinse thoroughly with warm water. Lay flat on a paper towel to dry.

**14916**



**Gentle Exfoliating Oblong Sponge**  
Hot Pink - 62.7mm x 40.6mm

Gently cleanse or exfoliate during skin care regimens with this reusable, latex-free cleansing sponge. Its oblong shape allows you to easily reach facial contours.

Easy to clean, simply wash with mild soap & rinse thoroughly with warm water. Squeeze to remove excess water. Set aside on a piece of paper towel to dry.

**14917**



**Oval Silicone Facial Cleansing Pad**  
Hot Pink - 64.8mm x 50.8mm

Gently cleanse or exfoliate during skin care regimens with this reusable silicone facial cleansing pad.

The soft silicone material allows you to easily reach facial contours as the multi-textured ridges are gentle, yet effective in cleansing skin.

Easy to clean, simply wash with mild soap & rinse thoroughly with warm water.

**14918**



**Dual Sided "Macaron" Blending Sponge**  
Light Nude - 54.1mm x 16.5mm

Apply & blend make-up easily with this double-sided, latex-free "macaron" blending sponge. Use the smooth side to apply product & then blend or set using the sponge side. The TPU film helps create a barrier between the sponge & the make-up so that excess product is not absorbed into the sponge. Can be used wet or dry. To clean, wet sponge in cold or lukewarm water.

Apply a small amount of facial cleanser, antibacterial liquid soap or sponge cleanser to the stained areas. Gently work into a lather without twisting or stretching the sponge. Rinse & repeat if necessary. Squeeze to remove excess water. Set aside on a piece of paper towel to dry.

**14919**



**Teardrop Silicone Applicator with Flocked Back**  
Pink - 66.7mm

No more wasted product!

This silicone, teardrop-shaped applicator will not absorb any make-up as it aids in evenly & flawlessly applying liquid foundation. Finish the look by using the flocked side to blend foundation or apply powder.

Easy to clean, simply wash applicator with mild soap & rinse thoroughly with warm water.

**14920**



**Dual Textured Blending Sponge**  
Nude/Pink - 50mm x 30mm

The unique shape of this sponge allows you to easily apply & blend foundation as well as contour & highlight. Apply foundation using the flat surface, which has a thin protective film, to help reduce product waste. Then, use the rest of the sponge to blend foundation into skin. To clean, wet sponge in cold or lukewarm water.

Apply a small amount of facial cleanser, antibacterial liquid soap or sponge cleanser to the stained areas. Gently work into a lather without twisting or stretching the sponge. Rinse & repeat if necessary.

**14921**



**Nude Angled Blending Sponge**  
Light - 63.5mm x 36.8mm

The unique shape of this latex-free, angled blending sponge provides a comfortable grip while applying & blending foundation, concealer or skincare products. The contours of the sponge allow for precise application in hard-to-reach areas. Use the angled side to apply the product, then flip over & use the flat side to stipple & blend. Can be used wet for sheer coverage & dry for heavier coverage. The sponge will also aid in achieving more difficult make-up artist techniques including highlighting, contouring & strobing. To clean, wet sponge in cold or lukewarm water.

Apply a small amount of facial cleanser, antibacterial liquid soap or sponge cleanser & gently work into a lather without twisting or stretching the sponge. Rinse & repeat if necessary.

**14922**



**Oval Multi-Purpose Silicone Applicator**  
Pink - 139.7 mm

This easy-to-clean, multi-purpose silicone applicator with plastic handle can be used for applying liquid make-up, lotions, creams or facial masks.

**14923**





COSMETIC ORGANIZERS

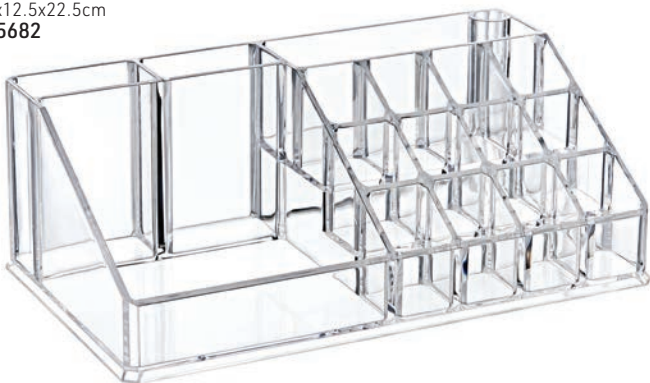
Cosmetics Organizer, Diamond Oval  
7x18x7cm  
15350



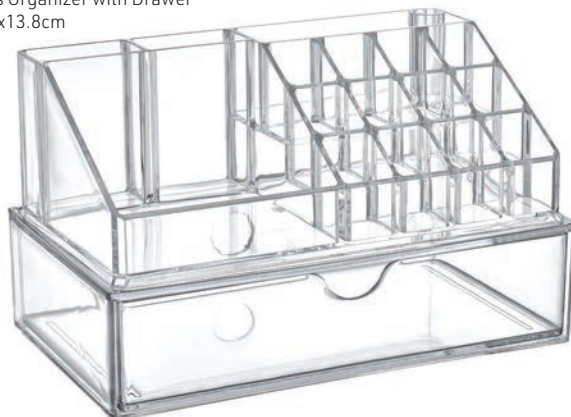
Cotton Bud Organizer  
8.5x10x7cm  
15681



Cosmetics Item Organizer  
8x12.5x22.5cm  
15682



Cosmetics Organizer with Drawer  
22.5x12.5x13.8cm  
15683



Cylinder Box Set  
8.8x10.5x6.5cm  
15684



Twin Cylinder Organizers  
11x15x8cm  
15686



Multi-Holder for Cosmetic Brushes  
Stand can be tilted to suit. Allows brushes to be stored upright at all times, especially after washing. Fits most brushes (tools not included)  
15698



Cotton Disc Organizer  
17cm tall  
15685





GrandeLIPS Hydrating Lip Plumper - 2.4ml

A high gloss, volumizing lip treatment with long-term hydrating benefits. Infused with a nourishing cocktail of Volulip™ & Hyaluronic Acid, this plumper instantly improves lip volume in 3-5 minutes & hydrates dry areas. Its clinically proven formula increases overall lip hydration by 51%, volume by 15%, softness by 11% & firmness by 13% in just 30 days of usage when applied twice daily. GrandeLIPS's unique cushion applicator easily wipes clean & combines effortlessly with other lip products.



Clear  
14722



Barely There  
14723



Hot Fuchsia  
14724



Pale Rose  
14725



Lust Red  
14726



Sunset Orange  
14727



Midnight Purple  
14728



Toasted Apricot  
14729



Cashmere Buff  
14730



Uptown Taupe  
14731



Spicy Mauve  
14732



Sunbaked Sedona  
14733



Dusty Taro  
14734